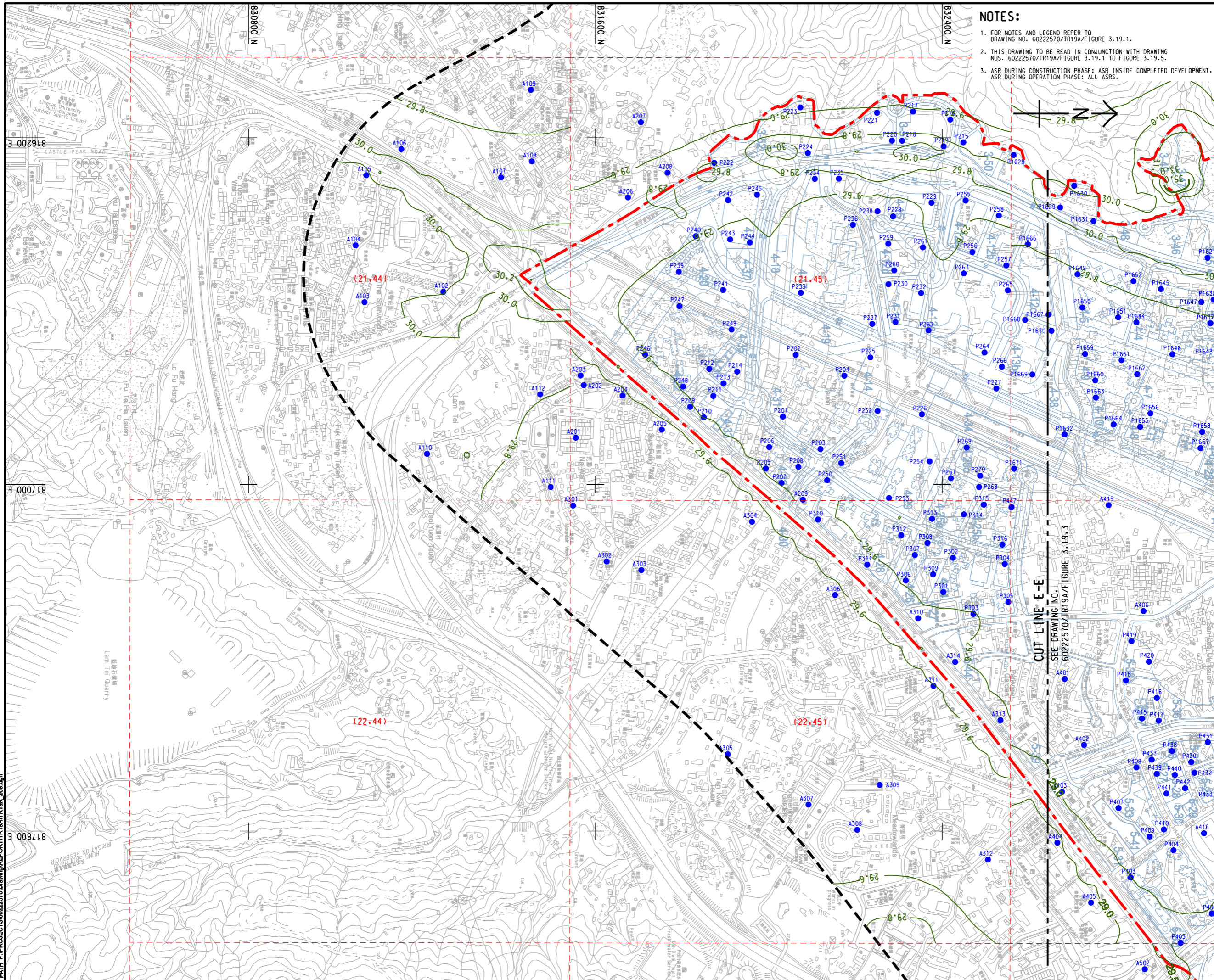


ISO A1 594mm x 841mm
 Approved:
 Checked:
 Designer:
 Project Management Initials:

Pld File by: ZENGFX
 PATH: P:\PROJECTS\60222570\DRAWING\REPORT\TR19A\TR19A_289.dgn



NOTES:

- FOR NOTES AND LEGEND REFER TO DRAWING NO. 60222570/TR19A/FIGURE 3.19.1.
- THIS DRAWING TO BE READ IN CONJUNCTION WITH DRAWING NOS. 60222570/TR19A/FIGURE 3.19.1 TO FIGURE 3.19.5.
- ASR DURING CONSTRUCTION PHASE: ASR INSIDE COMPLETED DEVELOPMENT, ASR DURING OPERATION PHASE: ALL ASRS.



PROJECT

HUNG SHUI KIU NEW DEVELOPMENT AREA PLANNING AND ENGINEERING STUDY - INVESTIGATION

CLIENT



土木工程拓展署
 Civil Engineering and Development Department



規劃署
 Planning Department

CONSULTANT

AECOM Asia Company Ltd.
 www.aecom.com

SUB-CONSULTANTS

ISSUE/REVISION

NO.	DATE	DESCRIPTION	CHK.

STATUS

SCALE

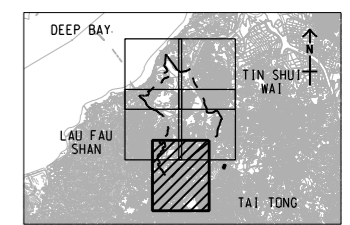
A3 1 : 8000

DIMENSION UNIT

METRES

KEY PLAN

A3 1 : 300000



PROJECT NO.

60222570

AGREEMENT NO.

CE2/2011 (CE)

SHEET TITLE

CONTOURS OF CUMULATIVE ANNUAL FSP CONCENTRATION (ug/m³) AT 1.5m ABOVE GROUND (YEAR 2031 - 2039) (OPERATION PHASE)

SHEET NUMBER

60222570/TR19A/FIGURE 3.19.5

SHEET 5 OF 5

This drawing has been prepared for the use of AECOM's client. It may not be used, modified, reproduced or relied upon by third parties, except as approved by AECOM or as required by law. AECOM accepts no responsibility, and denies any liability whatsoever, to any party, for losses or claims on this drawing without AECOM's express written consent. Do not scale this document. All measurements must be obtained from the stated dimensions.