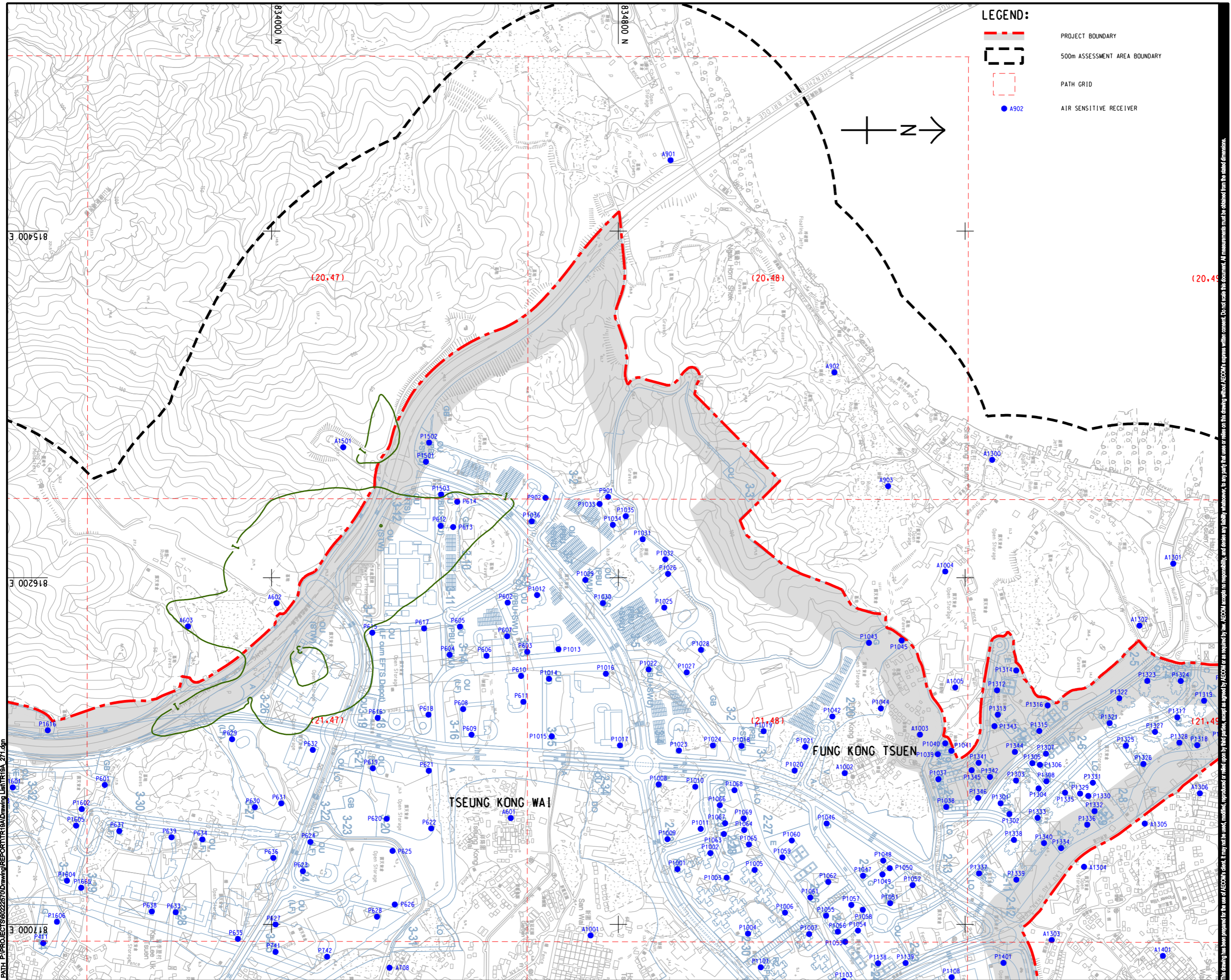
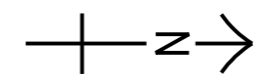


Pld File by: zhaohf
 PATH: P:\PROJECTS\60222570\Drawing\REPORT\TR19A\Drawing\Leat\TR19A_271.dgn
 Project Management Initials: Designer: Checked: Approved: ISO A1 594mm x 841mm



LEGEND:

- - - PROJECT BOUNDARY
- - - 500m ASSESSMENT AREA BOUNDARY
- - - PATH GRID
- A902 AIR SENSITIVE RECEIVER



AECOM

PROJECT
 HUNG SHUI KIU NEW DEVELOPMENT AREA PLANNING AND ENGINEERING STUDY - INVESTIGATION

CLIENT
 CEDD
 土木工程拓展署
 Civil Engineering and Development Department

CONSULTANT
 AECOM Asia Company Ltd.
 www.aecom.com

SUB-CONSULTANTS
 分判工程顧問公司

ISSUE/REVISION
 修訂

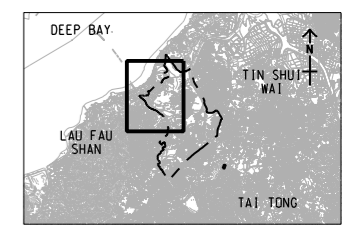
IR	DATE	DESCRIPTION	CHK.

STATUS
 現狀

SCALE
 比例: A3 1:8000

DIMENSION UNIT
 尺寸單位: METRES

KEY PLAN A3 1:300000



PROJECT NO.
 項目編號: 60222570

AGREEMENT NO.
 協議編號: CE2/2011 (CE)

SHEET TITLE
 圖紙名稱: CONTOURS OF ODOUR CONCENTRATION (OU/m³) DUE TO UPGRADED SAN WAI STW, NEW HSK STW AND PLANNED RTS AT 1.5m ABOVE GROUND

SHEET NUMBER
 圖紙編號: 60222570/TR19A/FIGURE 3.21

This drawing has been prepared for the use of AECOM's client. It may not be used, modified, reproduced or relied upon by third parties, except as required by law. AECOM accepts no responsibility, and disclaims any liability whatsoever, for any party that uses or relies on this drawing without AECOM's express written consent. Do not scale this document. All measurements must be obtained from the related dimensions.