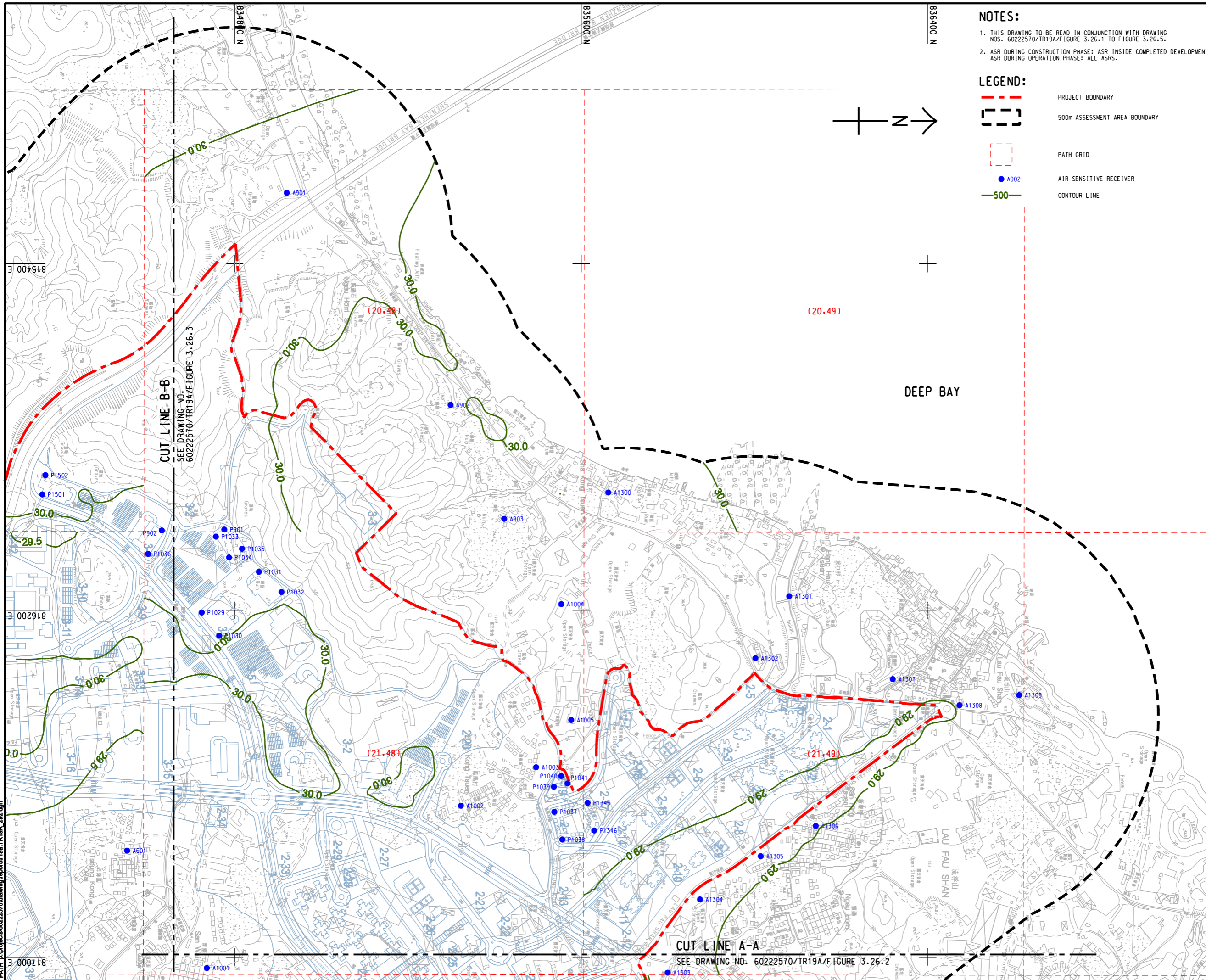


ISO A1 594mm x 841mm
 Approved:
 Checked:
 Designer:
 Project Management Initials:
 Pld File by: ZHOUJMH
 PATH: E:\projects\60222570\drawing\center\0a1\TR19A_292.dgn
 18 7000 E

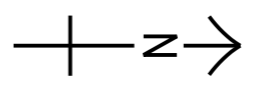


NOTES:

1. THIS DRAWING TO BE READ IN CONJUNCTION WITH DRAWING NOS. 60222570/TR19A/FIGURE 3.26.1 TO FIGURE 3.26.5.
2. ASR DURING CONSTRUCTION PHASE: ASR INSIDE COMPLETED DEVELOPMENT.
ASR DURING OPERATION PHASE: ALL ASRS.

LEGEND:

- - - PROJECT BOUNDARY
- 500m ASSESSMENT AREA BOUNDARY
- PATH GRID
- A902 AIR SENSITIVE RECEIVER
- 500 CONTOUR LINE



PROJECT
HUNG SHUI KIU NEW DEVELOPMENT AREA PLANNING AND ENGINEERING STUDY - INVESTIGATION

CLIENT
 業主

 土木工程拓展署 規劃署
 Civil Engineering and Development Department Planning Department

CONSULTANT
 工程顧問公司
 AECOM Asia Company Ltd.
 www.aecom.com

SUB-CONSULTANTS
 分判工程顧問公司

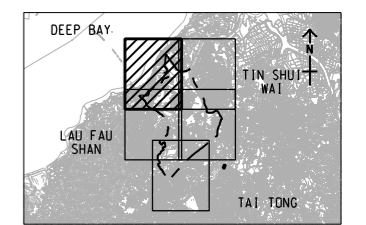
ISSUE/REVISION
 修訂

IR/ 修訂	DATE 日期	DESCRIPTION 內容摘要	CHK. 核對

STATUS
 階段

SCALE
 比例
 A3 1 : 8000
DIMENSION UNIT
 尺寸單位
 METRES

KEY PLAN
 索引圖
 A3 1 : 300000



PROJECT NO.
 項目編號
 60222570
AGREEMENT NO.
 協議編號
 CE2/2011 (CE)

SHEET TITLE
 圖紙名稱
 CONTOURS OF CUMULATIVE ANNUAL FSP CONCENTRATION (ug/m³) AT 1.5m ABOVE GROUND (YEAR 2019 - 2030) (MITIGATED)
SHEET NUMBER
 圖紙編號
 SHEET 1 OF 5
 60222570/TR19A/FIGURE 3.26.1

This drawing has been prepared for the use of AECOM's client. It may not be used, modified, reproduced or relied upon by third parties, except as required by law. AECOM accepts no responsibility, and disclaims any liability whatsoever, for any party that uses or relies on this drawing without AECOM's express written consent. Do not scale this document. All measurements must be obtained from the stated dimensions.