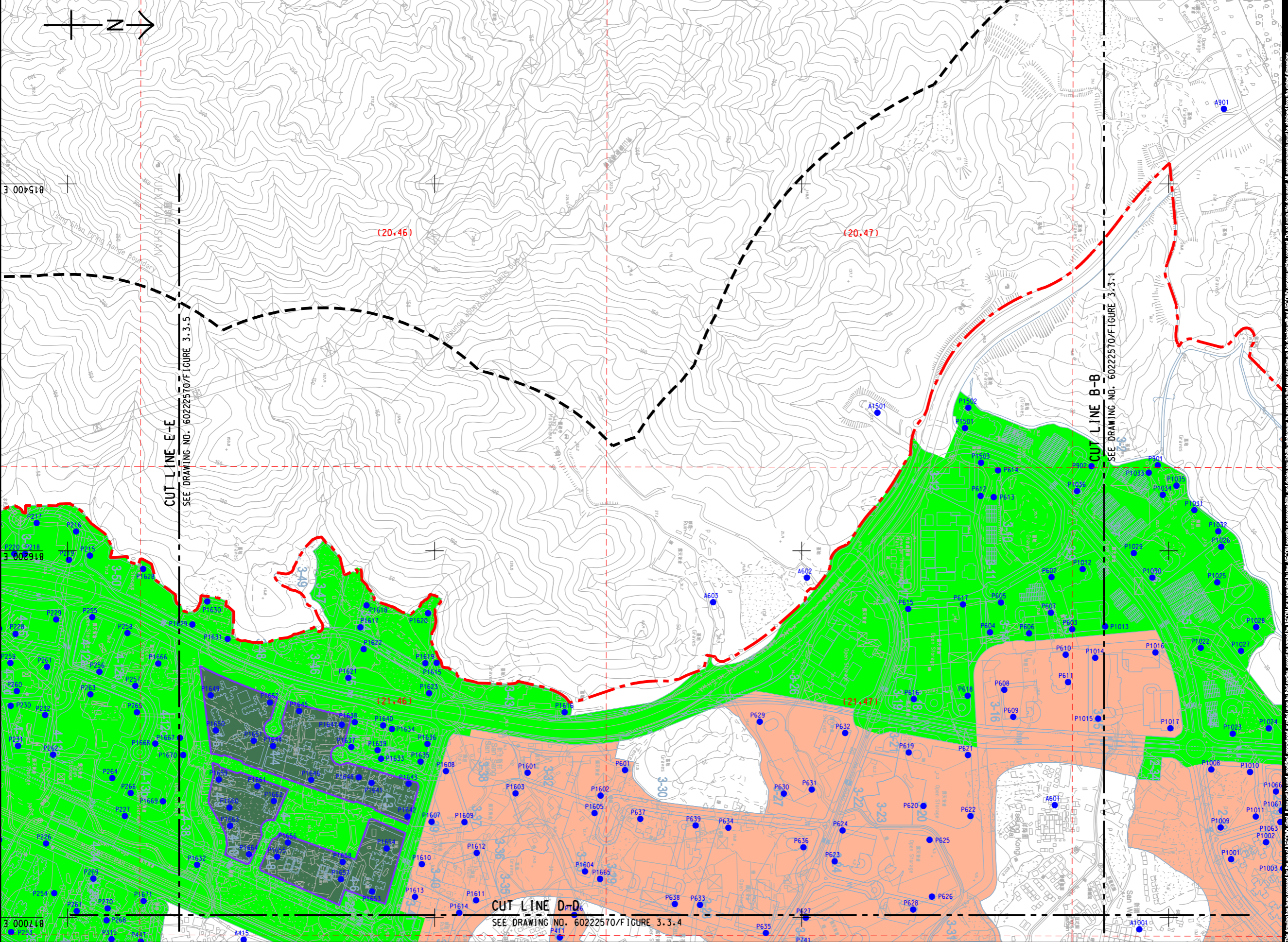


ISO A1 594mm x 841mm
Approved:
Checked:
Designer:
Project Management Initials:
Pld File by: YANGYU
PATH: E:\project\60222570\Drawing\REPORT\TR19A\TR19A_109.dgn

NOTES:

1. FOR NOTES AND LEGEND REFER TO DRAWING NO. 60222570/FIGURE 3.3.1.
2. THIS DRAWING TO BE READ IN CONJUNCTION WITH DRAWING NOS. 60222570/FIGURE 3.3.1 TO FIGURE 3.3.6.
3. ASR DURING CONSTRUCTION PHASE: ASR INSIDE COMPLETED DEVELOPMENT.
ASR DURING OPERATION PHASE: ALL ASRS.



AECOM

PROJECT HUNG SHUI KIU NEW DEVELOPMENT AREA PLANNING AND ENGINEERING STUDY - INVESTIGATION

CLIENT
CEDD
Civil Engineering and Development Department
Planning Department

CONSULTANT
AECOM Asia Company Ltd.
www.aecom.com

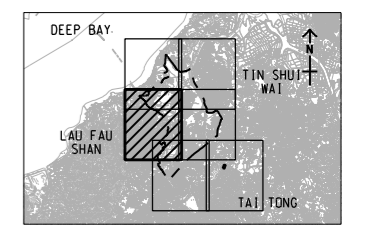
SUB-CONSULTANTS
分列工程顧問公司

ISSUE/REVISION

NO.	DATE	DESCRIPTION	CHK.

STATUS

SCALE
A3 1 : 8000
DIMENSION UNIT
METRES



PROJECT NO.
60222570
AGREEMENT NO.
CE2/2011 (CE)

SHEET TITLE
LOCATION OF REPRESENTATIVE
AIR SENSITIVE RECEIVER
(YEAR 2031 - 2039)

SHEET NUMBER
60222570/TR19A/FIGURE 3.3.3

This drawing has been prepared for the use of AECOM's client. It may not be used, modified, reproduced or relied upon by third parties, except as required by law. AECOM accepts no responsibility, and disclaims any liability whatsoever, for any party that uses or relies on this drawing without AECOM's express written consent. Do not erase this document. All measurements must be obtained from the related dimensions.