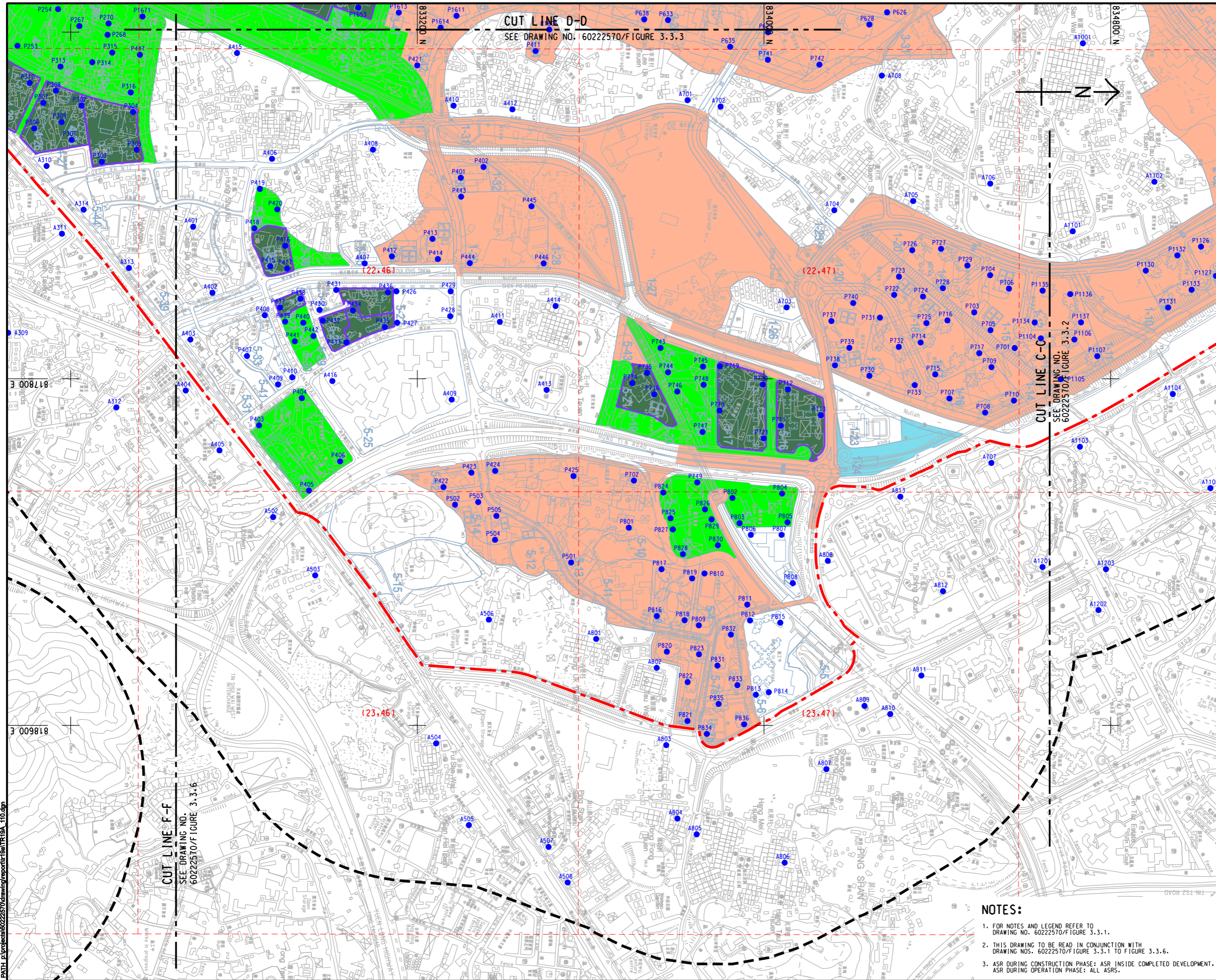


Pld File by: YANGYU
PATH: E:\projects\60222570\drawing\paper\GnTR19A_110.dgn



AECOM

PROJECT
HUNG SHUI KIU NEW DEVELOPMENT AREA PLANNING AND ENGINEERING STUDY - INVESTIGATION

CLIENT
CEDD
Civil Engineering and Development Department
Planning Department

CONSULTANT
AECOM Asia Company Ltd.
www.aecom.com

SUB-CONSULTANTS
分列工程顧問公司

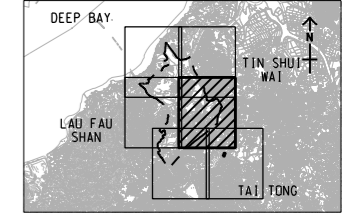
ISSUE/REVISION

NO.	DATE	DESCRIPTION	CHK.

STATUS

SCALE
A3 1 : 8000
KEY PLAN A3 1 : 300000

DIMENSION UNIT
METRES



PROJECT NO. 60222570
AGREEMENT NO. CE2/2011 (CE)

SHEET TITLE
LOCATION OF REPRESENTATIVE AIR SENSITIVE RECEIVER (YEAR 2031 - 2039)

SHEET NUMBER
60222570/TR19A/FIGURE 3.3.4

SHEET 4 OF 6

- NOTES:
- FOR NOTES AND LEGEND REFER TO DRAWING NO. 60222570/FIGURE 3.3.1.
 - THIS DRAWING TO BE READ IN CONJUNCTION WITH DRAWING NOS. 60222570/FIGURE 3.3.1 TO FIGURE 3.3.6.
 - ASR DURING CONSTRUCTION PHASE: ASR INSIDE COMPLETED DEVELOPMENT, ASR DURING OPERATION PHASE: ALL ASRS.

This drawing has been prepared for the use of AECOM's client. It may not be used, modified, reproduced or relied upon by third parties, except as approved by AECOM or as required by law. AECOM accepts no responsibility, and denies any liability whatsoever, for any party that uses or relies on this drawing without AECOM's express written consent. Do not scale this document. All measurements must be obtained from the stated dimensions.