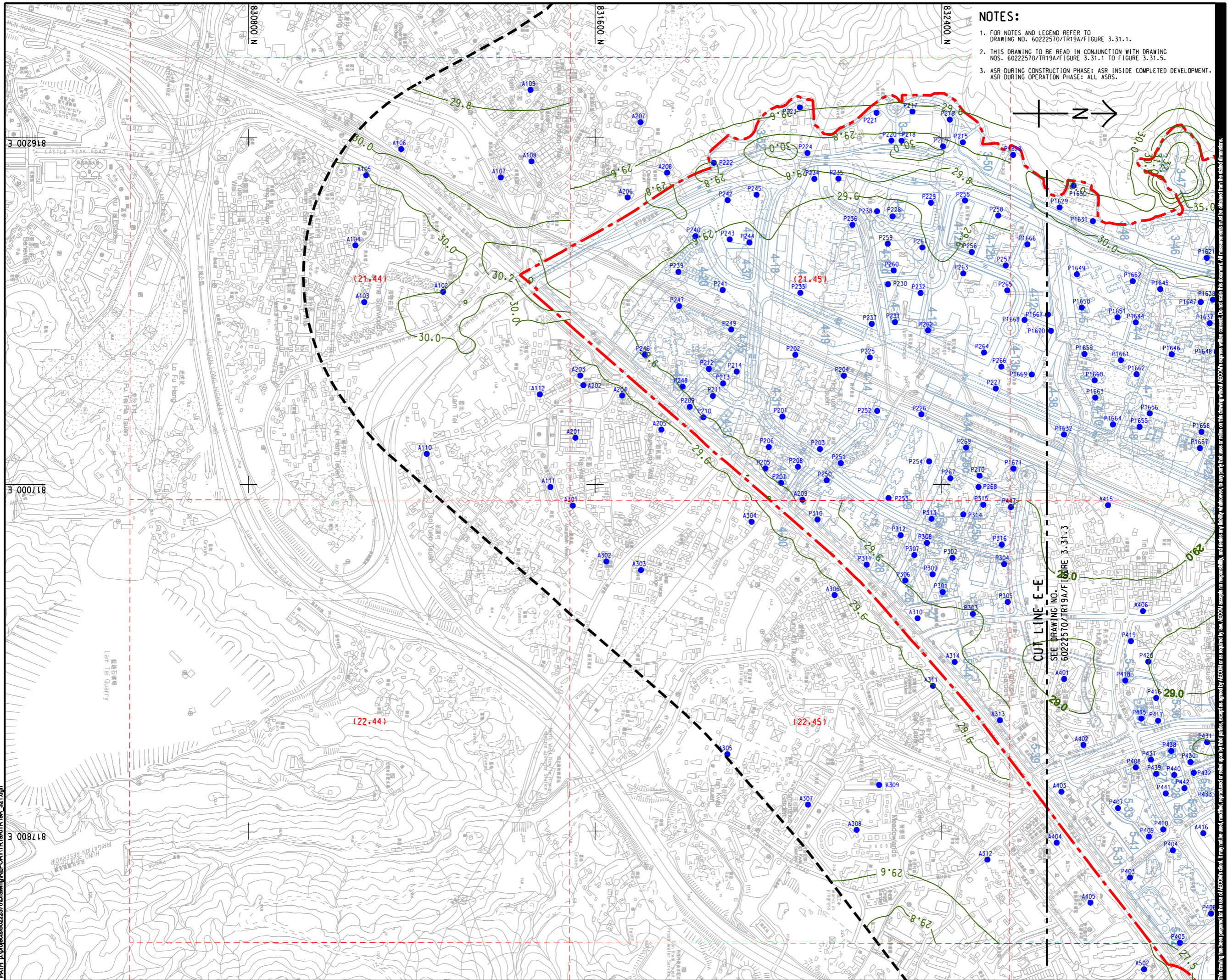


ISO A1 594mm x 841mm  
 Approved:  
 Checked:  
 Designer:  
 Project Management Initials:  
 Pld File by: ANH\60222570\Drawing\REPORT\TR19A\TR19A\_321.dgn  
 PATH: E:\projects\60222570\Drawing\REPORT\TR19A\TR19A\_321.dgn



- NOTES:**
- FOR NOTES AND LEGEND REFER TO DRAWING NO. 60222570/TR19A/FIGURE 3.31.1.
  - THIS DRAWING TO BE READ IN CONJUNCTION WITH DRAWING NOS. 60222570/TR19A/FIGURE 3.31.1 TO FIGURE 3.31.5.
  - ASR DURING CONSTRUCTION PHASE: ASR INSIDE COMPLETED DEVELOPMENT, ASR DURING OPERATION PHASE: ALL ASRS.

**AECOM**

**PROJECT**  
 HUNG SHUI KIU NEW DEVELOPMENT AREA PLANNING AND ENGINEERING STUDY - INVESTIGATION

**CLIENT**  
 CEDD  
 土木工程拓展署  
 Civil Engineering and Development Department

**CONSULTANT**  
 AECOM Asia Company Ltd.  
 www.aecom.com

**SUB-CONSULTANTS**  
 分判工程顧問公司

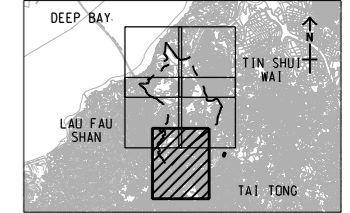
**ISSUE/REVISION**

NO.	DATE	DESCRIPTION	CHK.

**SCALE**  
 比例: A3 1 : 8000

**DIMENSION UNIT**  
 尺寸單位: METRES

**KEY PLAN**  
 索引圖: A3 1 : 300000



**PROJECT NO.**  
 項目編號: 60222570

**AGREEMENT NO.**  
 協議編號: CE2/2011 (CE)

**SHEET TITLE**  
 圖紙名稱: CONTOURS OF CUMULATIVE ANNUAL FSP CONCENTRATION (ug/m<sup>3</sup>) AT 1.5m ABOVE GROUND (YEAR 2031 - 2036) (MITIGATED)

**SHEET NUMBER**  
 圖紙編號: SHEET 5 OF 5

60222570/TR19A/FIGURE 3.31.5

This drawing has been prepared for the use of AECOM's client. It may not be used, modified, reproduced or relied upon by third parties, except as agreed by AECOM or as required by law. AECOM accepts no responsibility, and disclaims any liability whatsoever, for any party that uses or relies on this drawing without AECOM's express written consent. Do not trade this document. All measurements must be obtained from the stated dimensions.