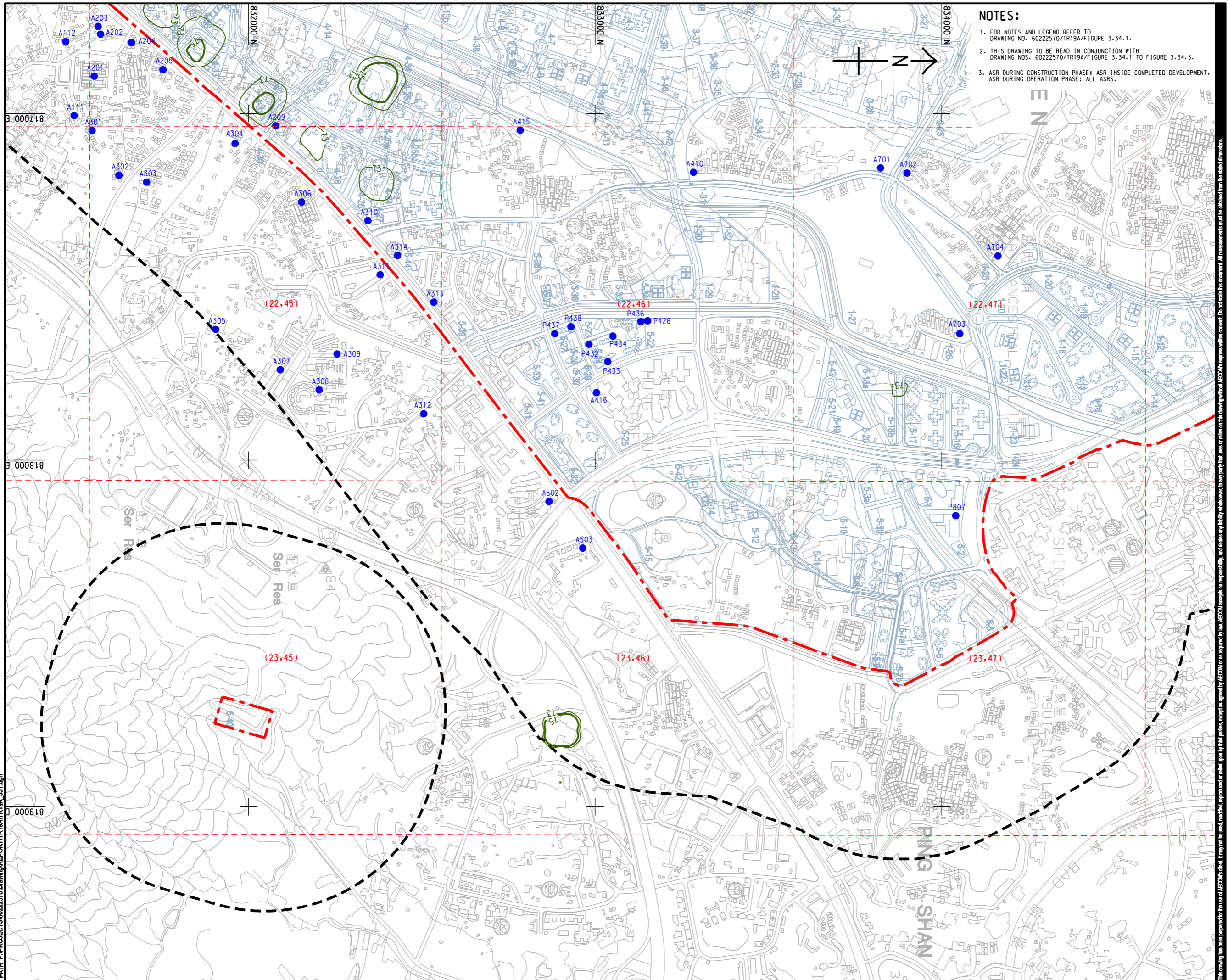


ISO A1 594mm x 841mm
Approved: 3.000218
Checked:
Designer:
Project Management Initials:
Pld File by: ZENGXF
PATH: P:\PROJECTS\60222570\DRAWING\REPORT\TR19A\TR19A_331.dgn



- NOTES:**
- FOR NOTES AND LEGEND REFER TO DRAWING NO. 60222570/TR19A/FIGURE 3.34.1.
 - THIS DRAWING TO BE READ IN CONJUNCTION WITH DRAWING NOS. 60222570/TR19A/FIGURE 3.34.1 TO FIGURE 3.34.3.
 - ASR DURING CONSTRUCTION PHASE: ASR INSIDE COMPLETED DEVELOPMENT.
ASR DURING OPERATION PHASE: ALL ASRS.

AECOM

PROJECT
項目

HUNG SHUI KIU NEW DEVELOPMENT AREA PLANNING AND ENGINEERING STUDY - INVESTIGATION

CLIENT
業主

CEDD
土木工程拓展署
Civil Engineering and Development Department

Planning Department
規劃署

CONSULTANT
工程顧問公司

AECOM Asia Company Ltd.
www.aecom.com

SUB-CONSULTANTS
分判工程顧問公司

ISSUE/REVISION
修訂

IR	DATE	DESCRIPTION	CHK

STATUS
階段

SCALE
比例

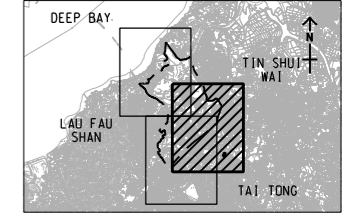
A3 1 : 10000

DIMENSION UNIT
尺寸單位

METRES

KEY PLAN
索引圖

A3 1 : 300000



PROJECT NO.
項目編號

60222570

AGREEMENT NO.
協議編號

CE2/2011 (CE)

SHEET TITLE
圖紙名稱

CONTOURS OF CUMULATIVE 10th HIGHEST 24-HOUR FSP CONCENTRATION (ug/m³) AT 1.5m ABOVE GROUND (YEAR 2019 - 2030) (TIER 2)

SHEET 2 OF 3

SHEET NUMBER
圖紙編號

60222570/TR19A/FIGURE 3.34.2

This drawing has been prepared for the use of AECOM's client. It may not be used, modified, reproduced or relied upon by third parties, except as required by law. AECOM accepts no responsibility, and denies any liability whatsoever, for any party that uses or relies on this drawing without AECOM's express written consent. Do not scale this document. All measurements must be obtained from the stated dimensions.