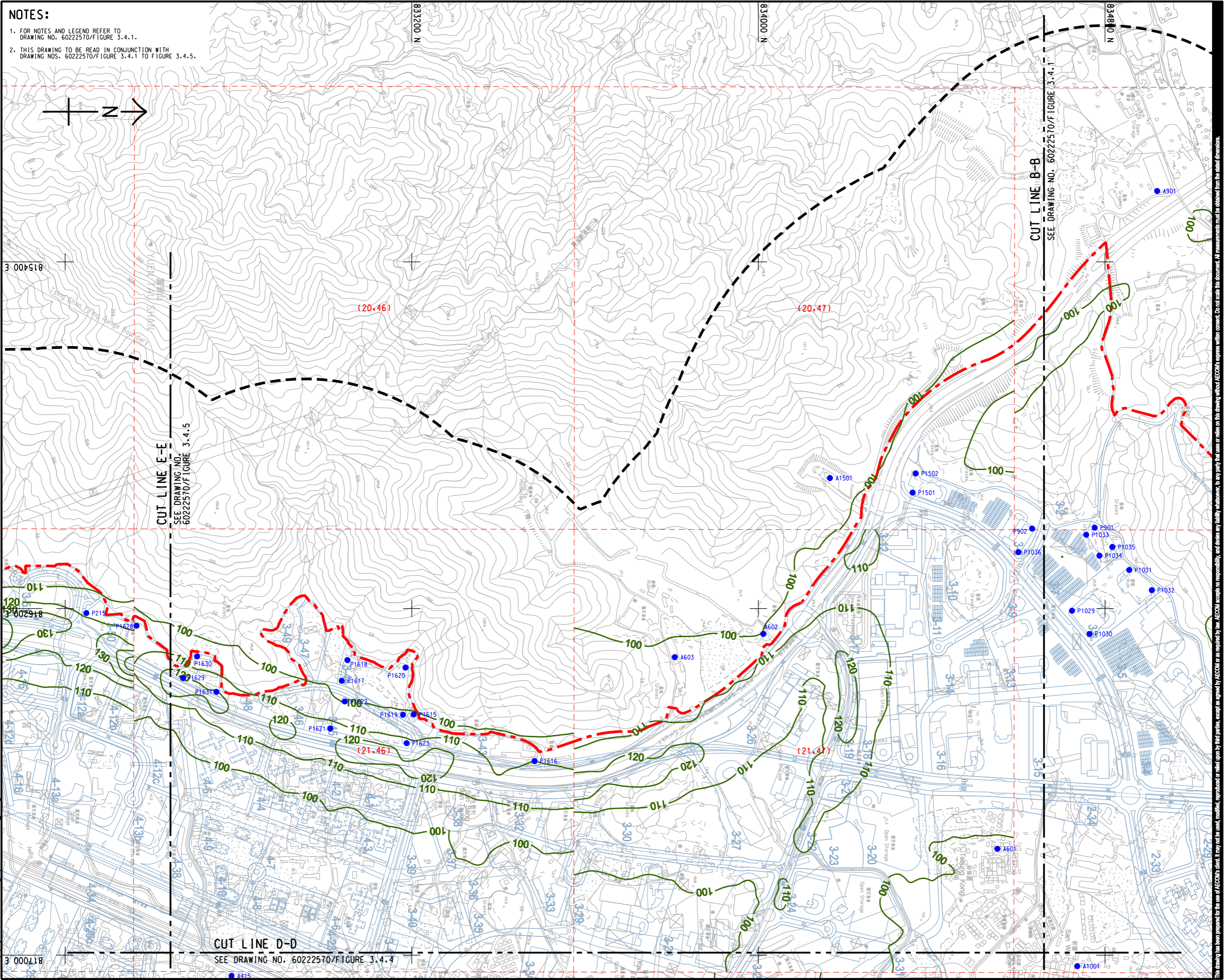
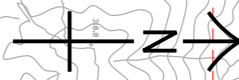


ISO A1 594mm x 841mm
Approved:
Checked:
Designer:
Project Management Initials:
Pld File by: HUANGXW
PATH: E:\projects\60222570\drawing\pset\TR19A\TR19A_139.dgn



NOTES:
 1. FOR NOTES AND LEGEND REFER TO DRAWING NO. 60222570/FIGURE 3.4.1.
 2. THIS DRAWING TO BE READ IN CONJUNCTION WITH DRAWING NOS. 60222570/FIGURE 3.4.1 TO FIGURE 3.4.5.



CUT LINE E-E
SEE DRAWING NO. 60222570/FIGURE 3.4.5

CUT LINE D-D
SEE DRAWING NO. 60222570/FIGURE 3.4.4

CUT LINE B-B
SEE DRAWING NO. 60222570/FIGURE 3.4.1

AECOM

PROJECT
 HUNG SHUI KIU NEW DEVELOPMENT AREA PLANNING AND ENGINEERING STUDY - INVESTIGATION

CLIENT
 CEDD
 土木工程拓展署
 Civil Engineering and Development Department

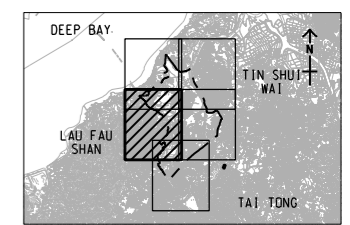
CONSULTANT
 AECOM Asia Company Ltd.
 www.aecom.com

SUB-CONSULTANTS
 分判工程顧問公司

ISSUE/REVISION

NO.	DATE	DESCRIPTION	CHK.

SCALE
 比例
 A3 1 : 8000
KEY PLAN A3 1 : 300000
 索引圖



PROJECT NO.
 項目編號
 60222570

AGREEMENT NO.
 協議編號
 CE2/2011 (CE)

SHEET TITLE
 圖紙名稱
 CONTOURS OF CUMULATIVE 19th HIGHEST 1-HOUR NO₂ CONCENTRATION (ug/m³) AT 1.5m ABOVE GROUND (YEAR 2024 - 2030)

SHEET NUMBER
 圖紙號碼
 SHEET 3 OF 5
 60222570/TR19A/FIGURE 3.4.3

This drawing has been prepared for the use of AECOM's client. It may not be used, modified, reproduced or relied upon by third parties, except as required by law. AECOM accepts no responsibility, and disclaims any liability whatsoever, for any party that uses or relies on this drawing without AECOM's express written consent. Do not scale this document. All measurements must be obtained from the stated dimensions.