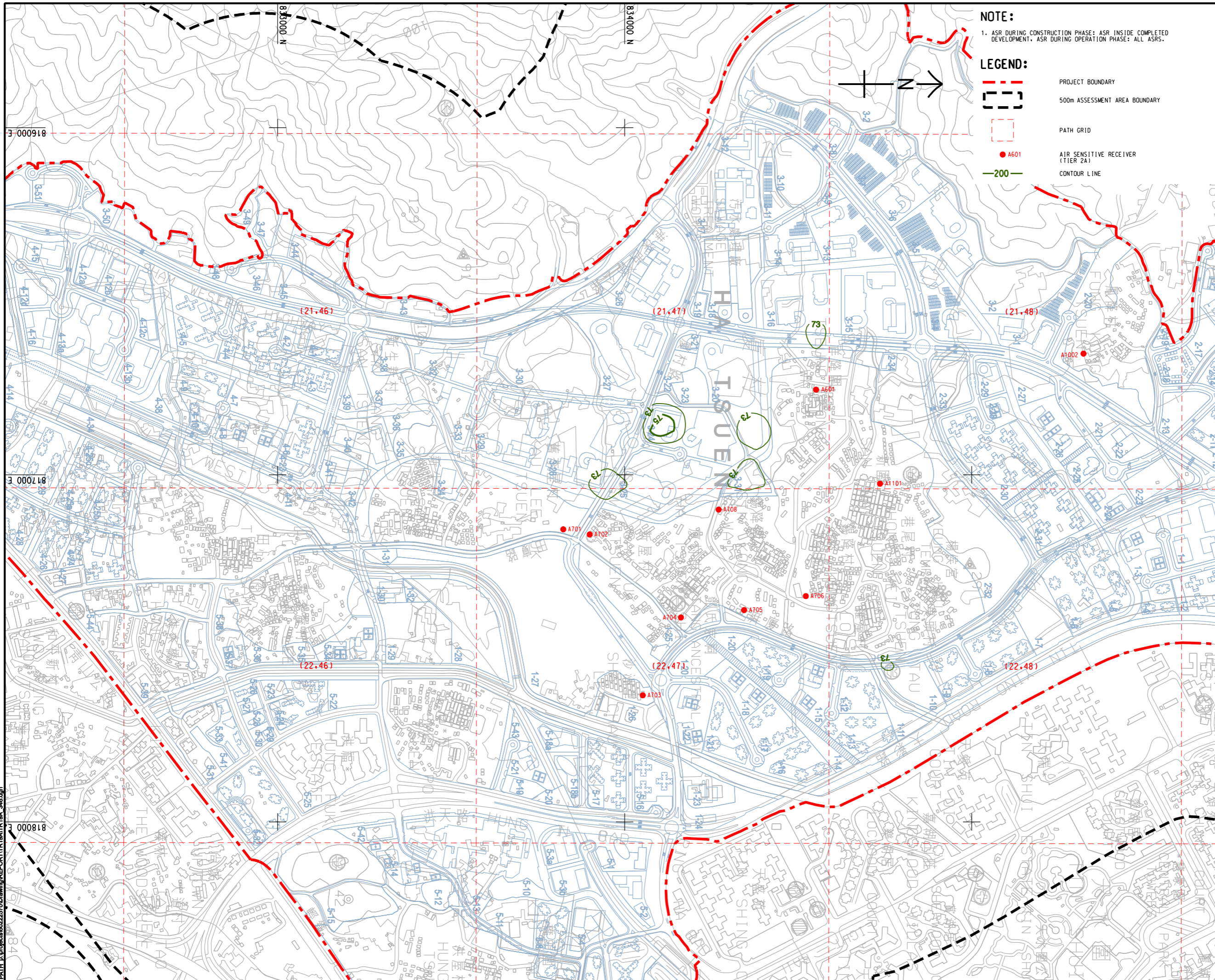


Pld File by: YANGYUW
 PATH: E:\projects\60222570\Drawing\REPORT\TR19A\TR19A_346.dgn
 Approved: 3-000918
 Checked: 817000 E
 Designer: 817000 E
 Project Management Initials: 817000 E
 ISO A1 594mm x 841mm



NOTE:

1. ASR DURING CONSTRUCTION PHASE: ASR INSIDE COMPLETED DEVELOPMENT. ASR DURING OPERATION PHASE: ALL ASRS.

LEGEND:

- - - PROJECT BOUNDARY
- 500m ASSESSMENT AREA BOUNDARY
- PATH GRID
- A601 AIR SENSITIVE RECEIVER (TIER 2A)
- -200 CONTOUR LINE



PROJECT
 項目
HUNG SHUI KIU NEW DEVELOPMENT AREA PLANNING AND ENGINEERING STUDY - INVESTIGATION

CLIENT
 業主



CONSULTANT
 工程顧問公司
 AECOM Asia Company Ltd.
 www.aecom.com

SUB-CONSULTANTS
 分判工程顧問公司

ISSUE/REVISION
 修訂

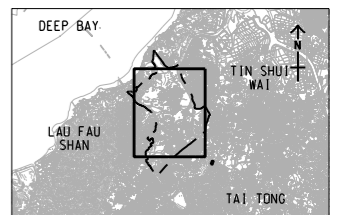
IR	DATE	DESCRIPTION	CHK.
修訂	日期	內容描述	校核

STATUS
 階段

SCALE **DIMENSION UNIT**

A3 1: 10000 METRES

KEY PLAN A3 1: 300000



PROJECT NO. **AGREEMENT NO.**

60222570 CE2/2011 (CE)

SHEET TITLE

CONTOURS OF CUMULATIVE 10th HIGHEST 24-HOUR FSP CONCENTRATION (ug/m³) AT 1.5m ABOVE GROUND (YEAR 2031 - 2036) (TIER 2 CENTRAL)

SHEET NUMBER

60222570/TR19A/FIGURE 3.42

This drawing has been prepared for the use of AECOM's client. It may not be used, modified, reproduced or relied upon by third parties, except as approved by AECOM or as required by law. AECOM accepts no responsibility, and denies any liability whatsoever, for any party that uses or relies on this drawing without AECOM's express written consent. Do not scale this document. All measurements must be obtained from the stated dimensions.