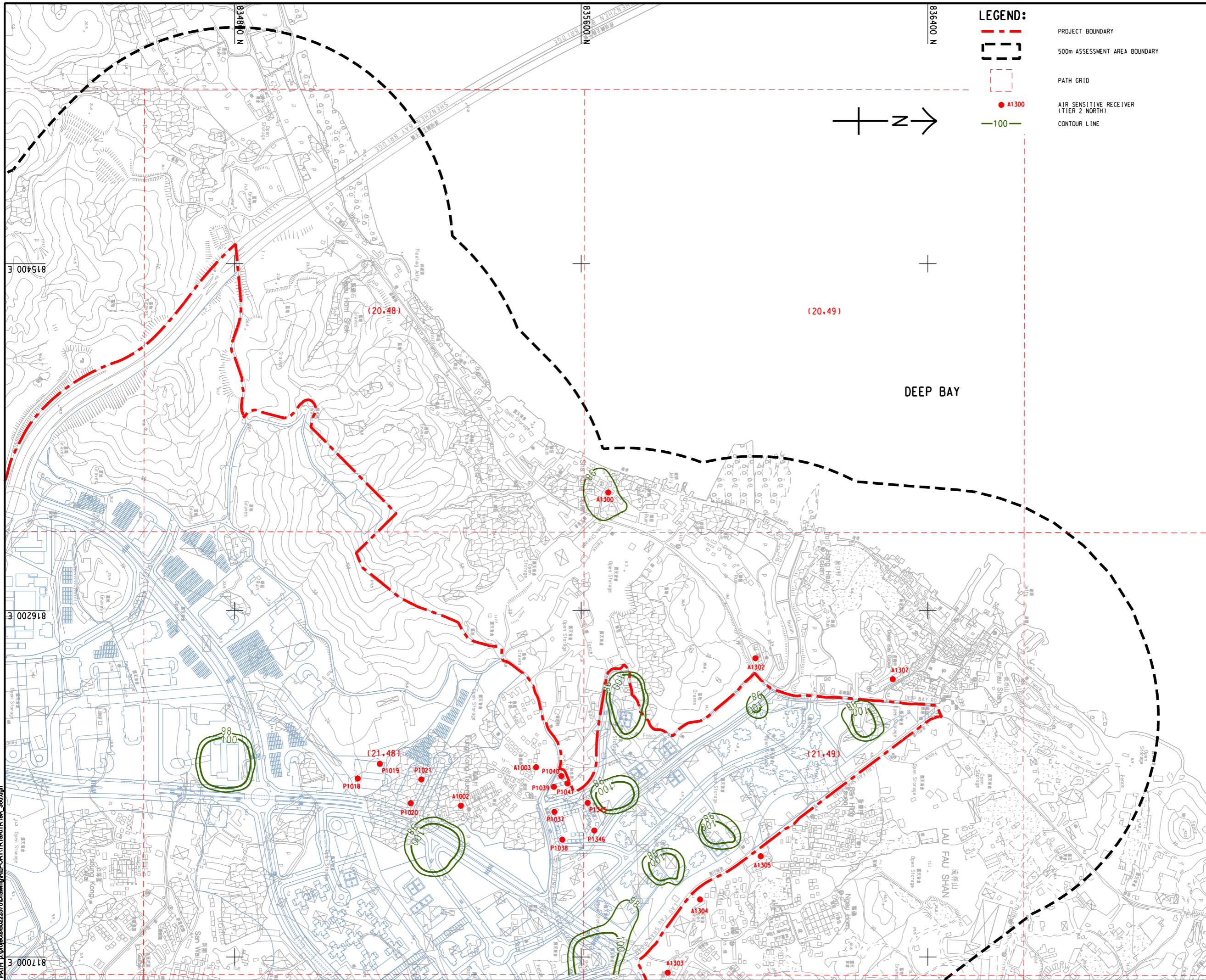
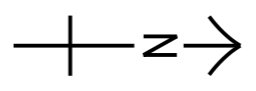


Pld File by: YANGYUW
 PATH: E:\projects\6022570\Drawings\REPORT\TR19A\TR19A_360.dgn



LEGEND:

- PROJECT BOUNDARY
- 500m ASSESSMENT AREA BOUNDARY
- PATH GRID
- AIR SENSITIVE RECEIVER (TIER 2 NORTH)
- CONTOUR LINE



PROJECT
 項目
HUNG SHUI KIU NEW DEVELOPMENT AREA PLANNING AND ENGINEERING STUDY - INVESTIGATION

CLIENT
 業主

 土木工程拓展署 規劃署
 Civil Engineering and Development Department Planning Department

CONSULTANT
 工程顧問公司
 AECOM Asia Company Ltd.
 www.aecom.com

SUB-CONSULTANTS
 分判工程顧問公司

ISSUE/REVISION
 修訂

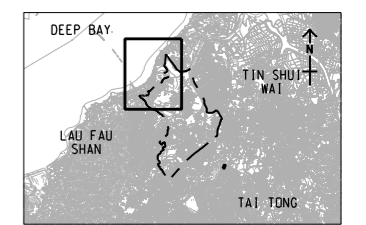
I/R	DATE	DESCRIPTION	CHK.
修訂	日期	內容描述	核對

STATUS
 階段

SCALE
 比例

DIMENSION UNIT
 尺寸單位
 METRES

KEY PLAN A3 1:30000
 索引圖



PROJECT NO.
 項目編號
 60222570

AGREEMENT NO.
 協議編號
 CE2/2011 (CE)

SHEET TITLE
 圖號
 CONTOURS OF CUMULATIVE 10th HIGHEST 24-HOUR RSP CONCENTRATION (ug/m³) AT 1.5m ABOVE GROUND (YEAR 2031 - 2036) (TIER 2 NORTH)

SHEET NUMBER
 圖號
 60222570/TR19A/FIGURE 3.56

This drawing has been prepared for the use of AECOM's client. It may not be used, modified, reproduced or relied upon by third parties, except as approved by AECOM or as required by law. AECOM accepts no responsibility, and denies any liability, whatsoever, to any party, for uses or reliance on this drawing without AECOM's express written consent. Do not scale this document. All measurements must be obtained from the related dimensions.