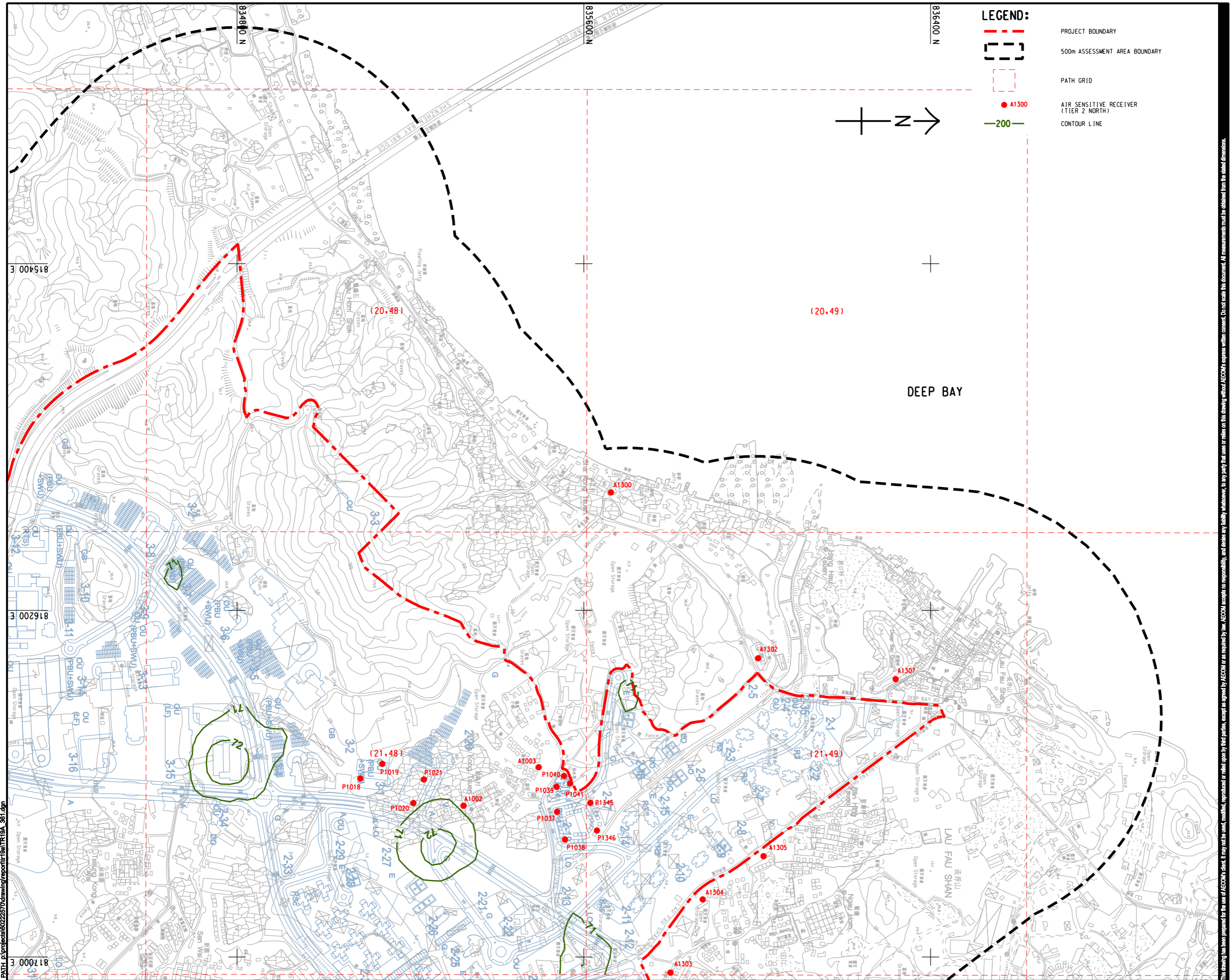
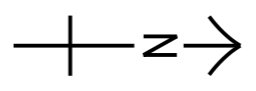


ISO A1 594mm x 841mm
Approved:
Checked:
Designer:
Project Management Initials:
Pld File by: ZHOUJMH
PATH: F:\projects\60222570\drawing\center\GATR\19A_361.dgn



LEGEND:

- - - PROJECT BOUNDARY
- 500m ASSESSMENT AREA BOUNDARY
- PATH GRID
- A1300 AIR SENSITIVE RECEIVER (TIER 2 NORTH)
- 200 CONTOUR LINE



AECOM

PROJECT
項目

HUNG SHUI KIU NEW DEVELOPMENT AREA PLANNING AND ENGINEERING STUDY - INVESTIGATION

CLIENT
業主


 土木工程拓展署
Civil Engineering and Development Department


 規劃署
Planning Department

CONSULTANT
工程顧問公司

AECOM Asia Company Ltd.
www.aecom.com

SUB-CONSULTANTS
分判工程顧問公司

ISSUE/REVISION
修訂

I/R	DATE	DESCRIPTION	CHK.

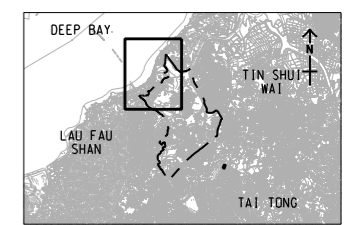
STATUS
圖況

SCALE
比例

DIMENSION UNIT
尺寸單位

A3 1 : 8000 METRES

KEY PLAN A3 1 : 300000



PROJECT NO.
項目編號

60222570

AGREEMENT NO.
協議編號

CE2/2011 (CE)

SHEET TITLE
圖紙名稱

CONTOURS OF CUMULATIVE 10th HIGHEST 24-HOUR FSP CONCENTRATION (ug/m³) AT 1.5m ABOVE GROUND (YEAR 2031 - 2036) (TIER 2 NORTH)

SHEET NUMBER
圖紙編號

60222570/TR19A/FIGURE 3.57

This drawing has been prepared for the use of AECOM's client. It may not be used, modified, reproduced or relied upon by third parties, except as agreed by AECOM or as required by law. AECOM accepts no responsibility, and denies any liability, whatsoever, to any party, for uses or relies on this drawing without AECOM's express written consent. Do not scale this document. All measurements must be obtained from the related dimensions.