

**NOTE:**  
1. THIS DRAWING TO BE READ IN CONJUNCTION WITH DRAWING NOS. 60222570/FIGURE 4.4.2 AND FIGURE 4.4.15.

**LEGEND:**

- PROJECT BOUNDARY
- 300m ASSESSMENT AREA BOUNDARY
- EXISTING CONSTRUCTION NOISE ASSESSMENT POINT
- PLANNED CONSTRUCTION NOISE ASSESSMENT POINT



**PROJECT**  
項目

**HUNG SHUI KIU NEW DEVELOPMENT AREA PLANNING AND ENGINEERING STUDY - INVESTIGATION**

**CLIENT**  
業主

土木工程拓展署  
 Civil Engineering and Development Department

規劃署  
 Planning Department

**CONSULTANT**  
工程顧問公司

AECOM Asia Company Ltd.  
www.aecom.com

**SUB-CONSULTANTS**  
分判工程顧問公司

**ISSUE/REVISION**  
修訂

IR/修訂	DATE/日期	DESCRIPTION/內容摘要	CHK./核對

**STATUS**  
階段

**SCALE**  
比例

**DIMENSION UNIT**  
尺寸單位

A3 1 : 24000      METRES

**KEY PLAN**  
索引圖

**PROJECT NO.**  
項目編號

**AGREEMENT NO.**  
協議編號

60222570      CE2/2011 (CE)

**SHEET TITLE**  
圖紙名稱

LOCATIONS OF REPRESENTATIVE NOISE SENSITIVE RECEIVERS FOR CONSTRUCTION NOISE - KEY PLAN

**SHEET NUMBER**  
圖紙編號

60222570/TR19A/FIGURE 4.4.1





This drawing has been prepared for the use of AECOM's client. It may not be used, modified, reproduced or relied upon by third parties, except as agreed by AECOM or as required by law. AECOM accepts no responsibility, and denies any liability whatsoever, to any party for losses or claims on this drawing without AECOM's express written consent. Do not scale this document. All measurements must be obtained from the stated dimensions.

ISO A1 594mm x 841mm  
Approved:  
Checked:  
Designer:  
Project Management Initials:  
Pld File by: ZENGFY  
PATH: E:\projects\60222570\drawing\center\0a\TR19A\_471.dgn

**NOTE:**

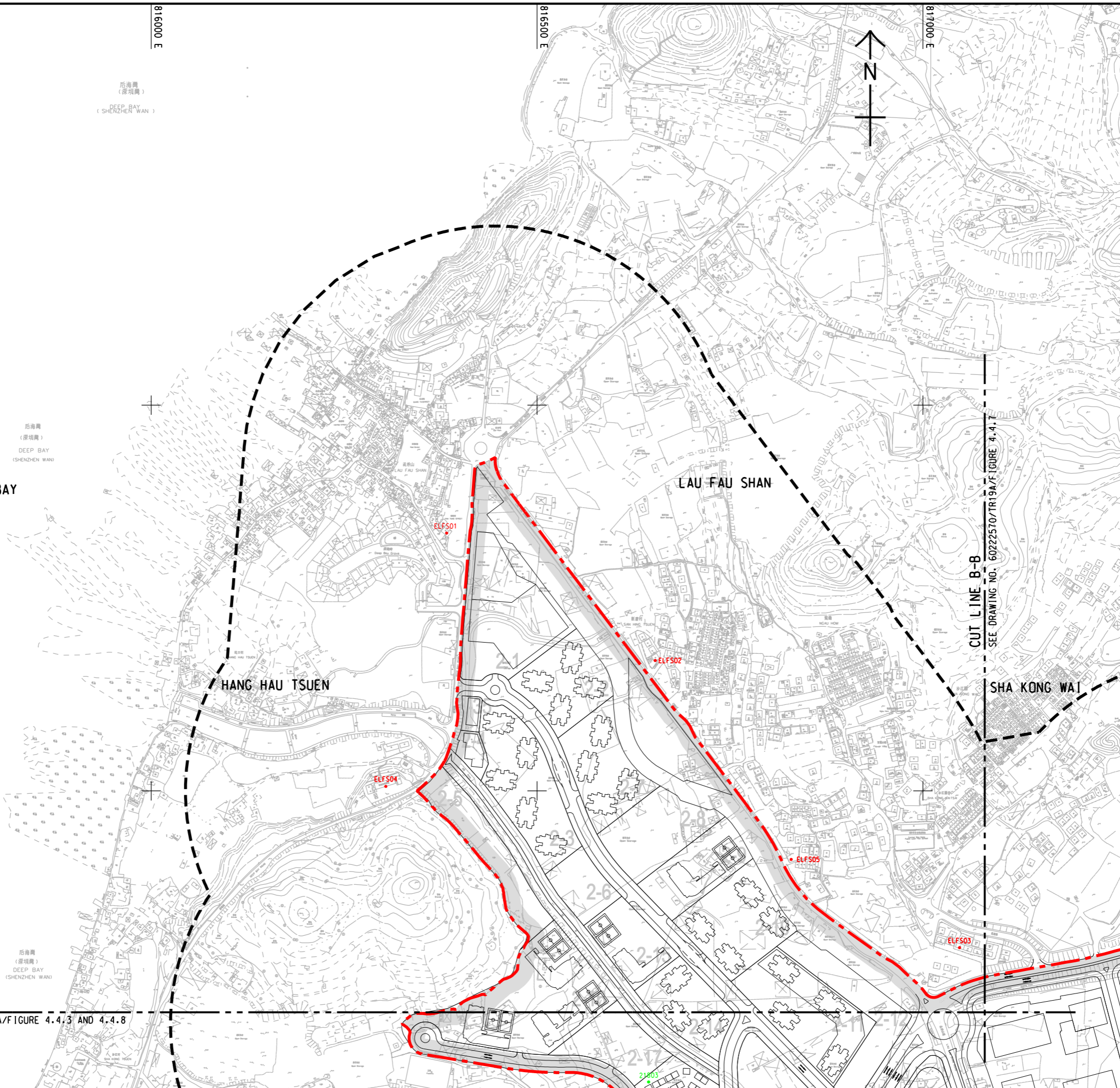
1. THIS DRAWING TO BE READ IN CONJUNCTION WITH DRAWING NOS. 60222570/TR19A/FIGURE 4.4.2 TO 4.4.15.

**LEGEND:**

-  PROJECT BOUNDARY
-  300m ASSESSMENT AREA BOUNDARY
-  EXISTING CONSTRUCTION NOISE ASSESSMENT POINT
-  PLANNED CONSTRUCTION NOISE ASSESSMENT POINT

后海灣 (深坑灣)  
DEEP BAY (SHENZHEN WAN)

后海灣 (深坑灣)  
DEEP BAY (SHENZHEN WAN)



**CUT LINE A-A**

SEE DRAWING NOS. 60222570/TR19A/FIGURE 4.4.3 AND 4.4.8

CUT LINE B-B  
SEE DRAWING NO. 60222570/TR19A/FIGURE 4.4.4



**PROJECT**  
項目  
**HUNG SHUI KIU NEW DEVELOPMENT AREA PLANNING AND ENGINEERING STUDY - INVESTIGATION**

**CLIENT**  
業主



**CONSULTANT**  
工程顧問公司  
AECOM Asia Company Ltd.  
www.aecom.com

**SUB-CONSULTANTS**  
分判工程顧問公司

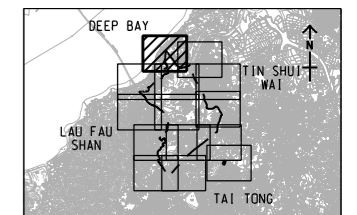
**ISSUE/REVISION**  
修訂

IR	DATE	DESCRIPTION	CHK
號次	日期	內容摘要	核對

**STATUS**  
階段

**SCALE**  
比例  
A3 1 : 5000  
**DIMENSION UNIT**  
尺寸單位  
METRES

**KEY PLAN** A3 1 : 300000  
索引圖



**PROJECT NO.**  
項目編號  
60222570  
**AGREEMENT NO.**  
協議編號  
CE2/2011 (CE)

**SHEET TITLE**  
圖紙名稱  
LOCATIONS OF REPRESENTATIVE NOISE SENSITIVE RECEIVERS FOR CONSTRUCTION NOISE  
SHEET 1 OF 14

**SHEET NUMBER**  
圖紙編號  
60222570/TR19A/FIGURE 4.4.2

This drawing has been prepared for the use of AECOM's client. It may not be used, modified, reproduced or relied upon by third parties, except as approved by AECOM or as required by law. AECOM accepts no responsibility, and disclaims any liability whatsoever, for any party that uses or relies on this drawing without AECOM's express written consent. Do not scale this document. All measurements must be obtained from the stated dimensions.

ISO A1 594mm x 841mm  
Approved:  
Checked:  
Designer:  
Project Management Initials:  
Pld File by: ZENGFY  
PATH: E:\projects\60222570\drawing\paper\0a1\TR19A\_472.dgn

**NOTES:**

1. FOR LEGEND REFER TO DRAWING NO. 60222570/TR19A/FIGURE 4.4.2.
2. THIS DRAWING TO BE READ IN CONJUNCTION WITH DRAWING NOS. 60222570/TR19A/FIGURE 4.4.2 TO 4.4.15.

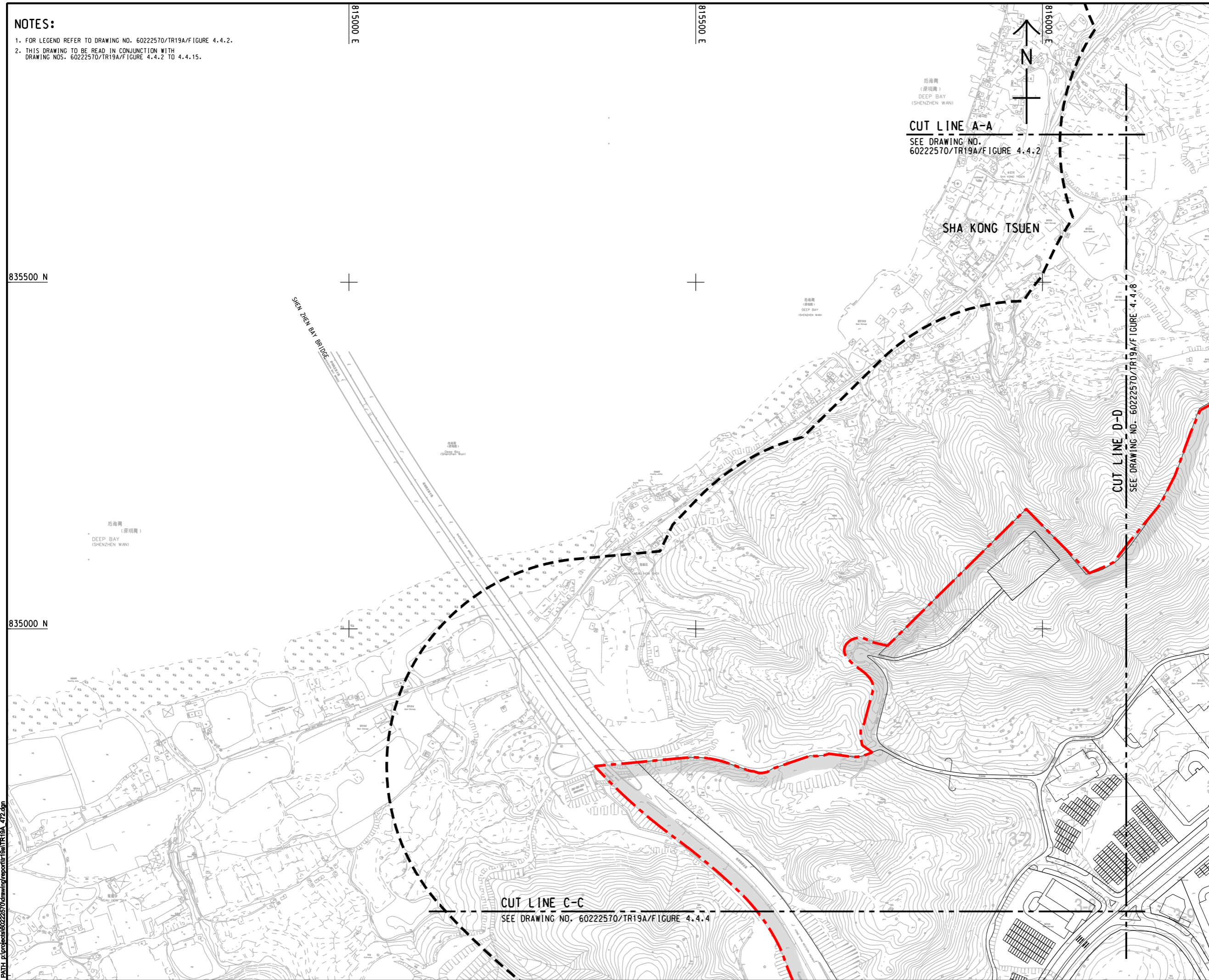
835500 N

835000 N

815000 E

815500 E

816000 E



CUT LINE A-A

SEE DRAWING NO. 60222570/TR19A/FIGURE 4.4.2

SHA KONG TSUEN

CUT LINE D-D  
SEE DRAWING NO. 60222570/TR19A/FIGURE 4.4.8

CUT LINE C-C

SEE DRAWING NO. 60222570/TR19A/FIGURE 4.4.4

**AECOM**

PROJECT  
項目

**HUNG SHUI KIU NEW DEVELOPMENT AREA PLANNING AND ENGINEERING STUDY - INVESTIGATION**

CLIENT  
業主



土木工程拓展署  
Civil Engineering and Development Department



規劃署  
Planning Department

CONSULTANT  
工程顧問公司

AECOM Asia Company Ltd.  
www.aecom.com

SUB-CONSULTANTS  
分判工程顧問公司

ISSUE/REVISION  
修訂

NO.	DATE	DESCRIPTION	CHK.

STATUS  
階段

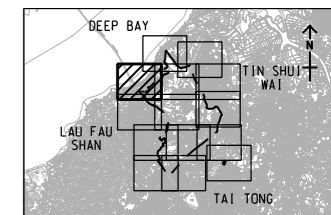
SCALE  
比例

A3 1:5000

DIMENSION UNIT  
尺寸單位

METRES

KEY PLAN A3 1:30000



PROJECT NO.  
項目編號

60222570

AGREEMENT NO.  
協議編號

CE2/2011 (CE)

SHEET TITLE  
圖紙名稱

LOCATIONS OF REPRESENTATIVE NOISE SENSITIVE RECEIVERS FOR CONSTRUCTION NOISE

SHEET 2 OF 14

SHEET NUMBER  
圖紙編號

60222570/TR19A/FIGURE 4.4.3

This drawing has been prepared for the use of AECOM's client. It may not be used, modified, reproduced or relied upon by third parties, except as agreed by AECOM or as required by law. AECOM accepts no responsibility, and denies any liability whatsoever, for any party that uses or relies on this drawing without AECOM's express written consent. Do not scale this document. All measurements must be obtained from the stated dimensions.

ISO A1 594mm x 841mm  
 Approved:  
 Checked:  
 Designer:  
 Project Management Initials:

**NOTES:**  
 1. FOR LEGEND REFER TO DRAWING NO. 60222570/TR19A/FIGURE 4.4.2.  
 2. THIS DRAWING TO BE READ IN CONJUNCTION WITH DRAWING NOS. 60222570/TR19A/FIGURE 4.4.2 TO 4.4.15.

834500 N

834000 N

833500 N

815000 E

815000 E

815000 E

**CUT LINE C-C**

SEE DRAWING NO. 60222570/TR19A/FIGURE 4.4.3

**CUT LINE F-F**  
 SEE DRAWING NO. 60222570/TR19A/FIGURE 4.4.9

This drawing has been prepared for the use of AECOM's client. It may not be used, modified, reproduced or relied upon by third parties, except as agreed by AECOM or as required by law. AECOM accepts no responsibility, and denies any liability whatsoever, to any party, for uses or reliance on this drawing without AECOM's express written consent. Do not scale this document. All measurements must be obtained from the stated dimensions.

**AECOM**

PROJECT  
 項目

**HUNG SHUI KIU NEW DEVELOPMENT AREA PLANNING AND ENGINEERING STUDY - INVESTIGATION**

CLIENT  
 業主



土木工程拓展署  
 Civil Engineering and Development Department



規劃署  
 Planning Department

CONSULTANT  
 工程顧問公司

AECOM Asia Company Ltd.  
 www.aecom.com

SUB-CONSULTANTS  
 分判工程顧問公司

ISSUE/REVISION  
 修訂

IR 修訂	DATE 日期	DESCRIPTION 內容摘要	CHK. 核對

STATUS  
 階段

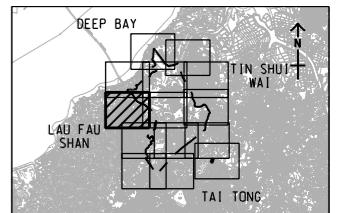
SCALE  
 比例

DIMENSION UNIT  
 尺寸單位

A3 1 : 5000

METRES

KEY PLAN A3 1 : 300000



PROJECT NO.  
 項目編號

AGREEMENT NO.  
 協議編號

60222570

CE2/2011 (CE)

SHEET TITLE  
 圖紙名稱

LOCATIONS OF REPRESENTATIVE NOISE SENSITIVE RECEIVERS FOR CONSTRUCTION NOISE

SHEET 3 OF 14

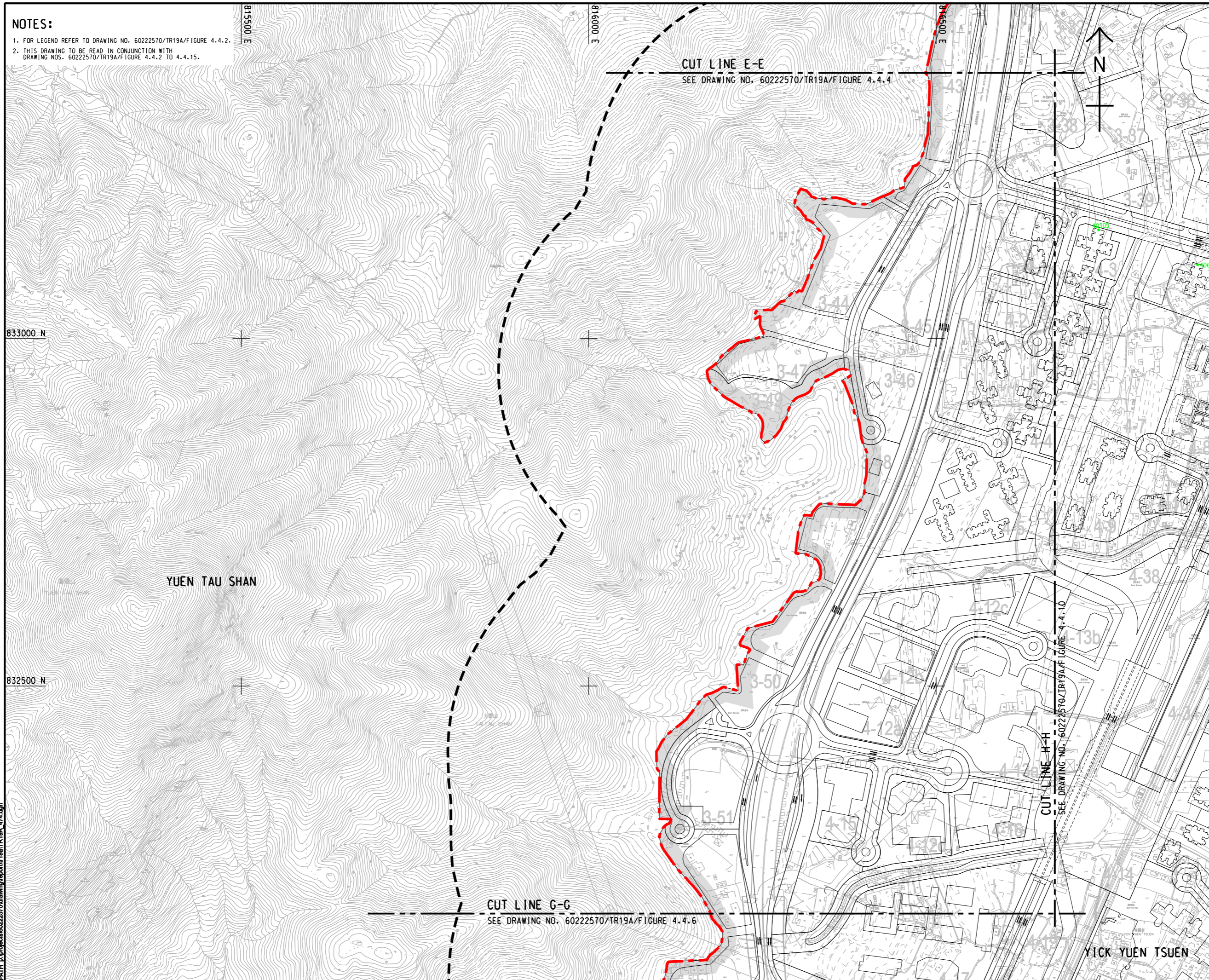
SHEET NUMBER  
 圖紙編號

60222570/TR19A/FIGURE 4.4.4

Pld File by: ZENGFY  
 PATH: F:\projects\60222570\drawing\paper\tr19a\_473.dgn

ISO A1 594mm x 841mm  
 Approved:  
 Checked:  
 Designer:  
 Project Management Initials:  
 Pld File by: ZENGFY  
 PATH: F:\project\60222570\drawing\center\6a\TR19A\_474.dgn

**NOTES:**  
 1. FOR LEGEND REFER TO DRAWING NO. 60222570/TR19A/FIGURE 4.4.2.  
 2. THIS DRAWING TO BE READ IN CONJUNCTION WITH DRAWING NOS. 60222570/TR19A/FIGURE 4.4.2 TO 4.4.15.



**AECOM**

**PROJECT**  
 項目  
**HUNG SHUI KIU NEW DEVELOPMENT AREA PLANNING AND ENGINEERING STUDY - INVESTIGATION**

**CLIENT**  
 業主  
   
 土木工程拓展署 規劃署  
 Civil Engineering and Development Department Planning Department

**CONSULTANT**  
 工程顧問公司  
 AECOM Asia Company Ltd.  
 www.aecom.com

**SUB-CONSULTANTS**  
 分判工程顧問公司

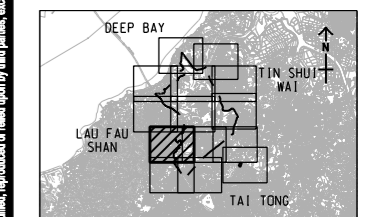
**ISSUE/REVISION**  
 修訂

IR	DATE	DESCRIPTION	CHK
號	日期	內容摘要	號

**STATUS**  
 階段

**SCALE**      **DIMENSION UNIT**  
 比例      尺寸單位  
 A3 1 : 5000      METRES

**KEY PLAN**    A3 1 : 30000  
 索引圖



**PROJECT NO.**      **AGREEMENT NO.**  
 項目編號      協議編號  
 60222570      CE2/2011 (CE)

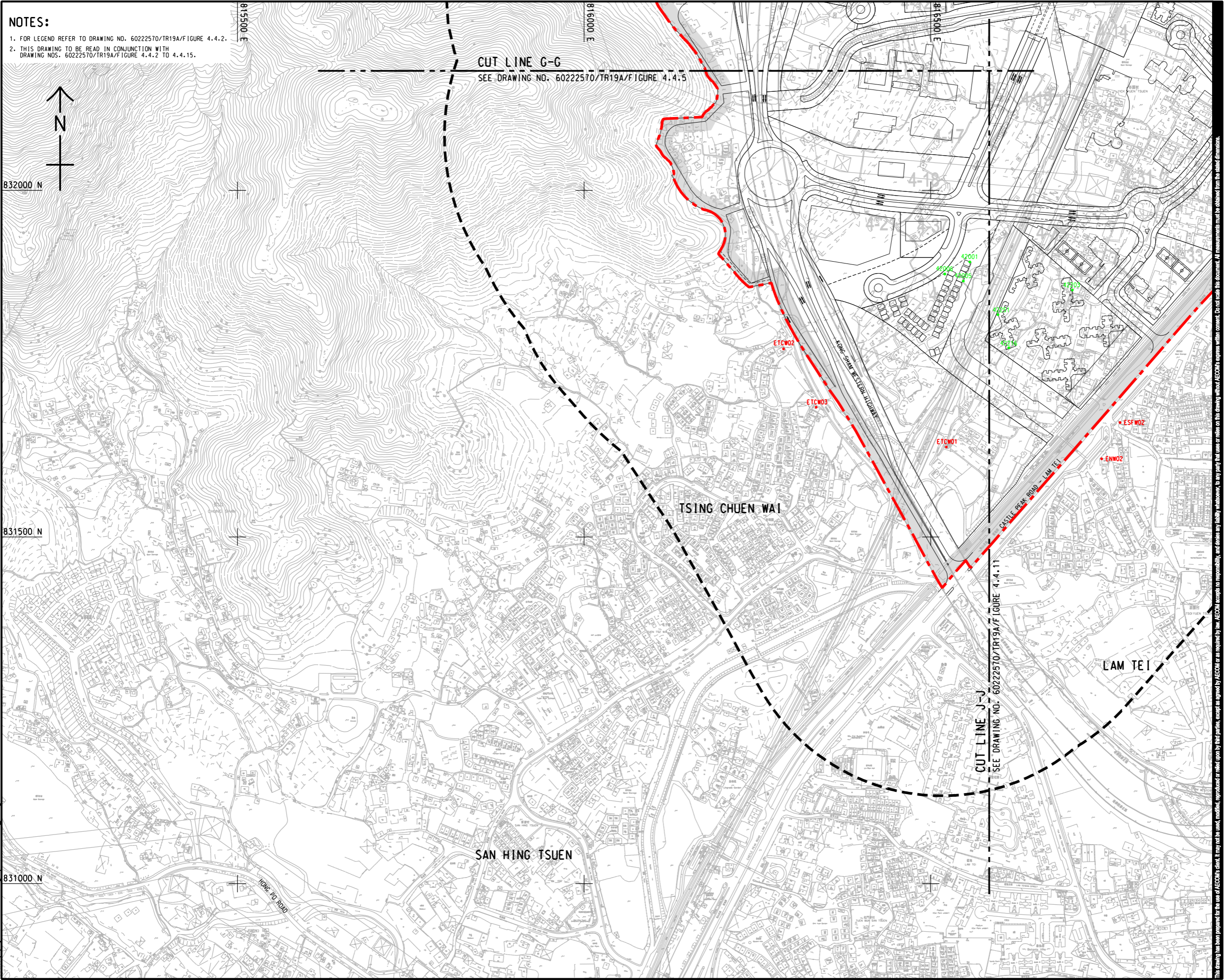
**SHEET TITLE**  
 圖紙名稱

**LOCATIONS OF REPRESENTATIVE NOISE SENSITIVE RECEIVERS FOR CONSTRUCTION NOISE**  
 代表受保護接收器之位置  
 SHEET 4 OF 14

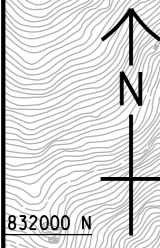
**SHEET NUMBER**  
 圖紙編號  
 60222570/TR19A/FIGURE 4.4.5

This drawing has been prepared for the use of AECOM's client. It may not be used, modified, reproduced or relied upon by third parties, except as agreed by AECOM in writing. AECOM accepts no responsibility, and denies any liability whatsoever, for any party that uses or relies on this drawing without AECOM's express written consent. Do not scale this document. All measurements must be obtained from the stated dimensions.

ISO A1 594mm x 841mm  
Approved:  
Checked:  
Designer:  
Project Management Initials:  
Pld File by: ZENGFYX  
PATH: E:\project\60222570\drawing\paper\tr19a\475.dgn



**NOTES:**  
 1. FOR LEGEND REFER TO DRAWING NO. 60222570/TR19A/FIGURE 4.4.2.  
 2. THIS DRAWING TO BE READ IN CONJUNCTION WITH DRAWING NOS. 60222570/TR19A/FIGURE 4.4.2 TO 4.4.15.



832000 N

831500 N

831000 N

**CUT LINE G-G**  
 SEE DRAWING NO. 60222570/TR19A/FIGURE 4.4.5

**CUT LINE J-J**  
 SEE DRAWING NO. 60222570/TR19A/FIGURE 4.4.11

TSING CHUEN WAI

LAM TEI

SAN HING TSUEN

**AECOM**

**PROJECT**  
 HUNG SHUI KIU NEW DEVELOPMENT AREA PLANNING AND ENGINEERING STUDY - INVESTIGATION

**CLIENT**  
 CEDD  
 土木工程拓展署  
 Civil Engineering and Development Department

**CONSULTANT**  
 AECOM Asia Company Ltd.  
 www.aecom.com

**SUB-CONSULTANTS**  
 分判工程顧問公司

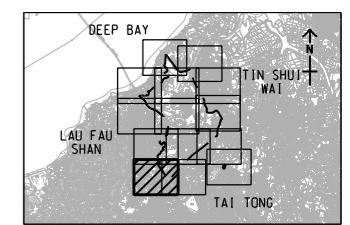
**ISSUE/REVISION**  
 修訂

IR	DATE	DESCRIPTION	CHK

**STATUS**  
 階段

**SCALE**  
 比例  
 A3 1 : 5000

**DIMENSION UNIT**  
 尺寸單位  
 METRES



**PROJECT NO.**  
 項目編號  
 60222570

**AGREEMENT NO.**  
 協議編號  
 CE2/2011 (CE)

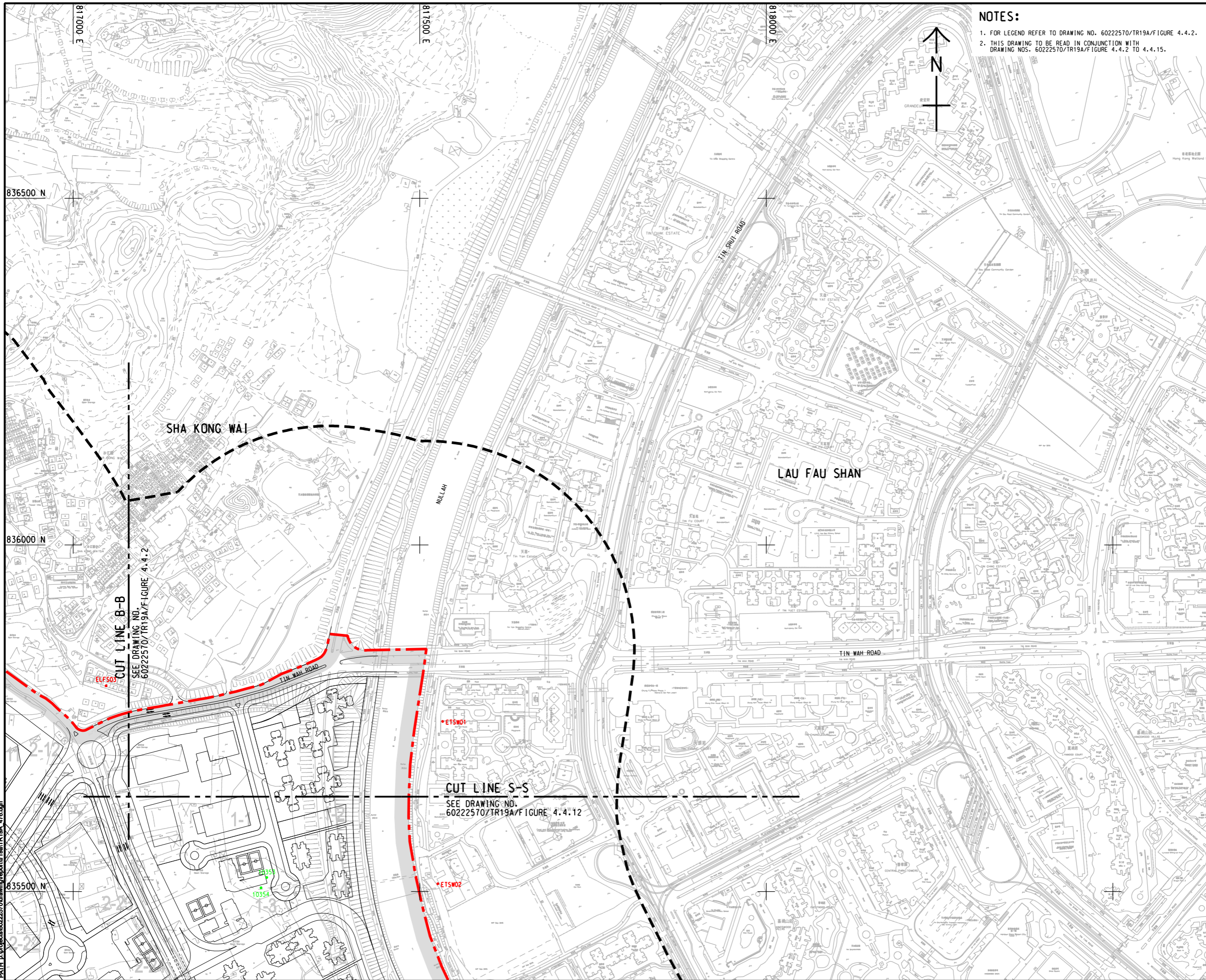
**SHEET TITLE**  
 圖名  
 LOCATIONS OF REPRESENTATIVE NOISE SENSITIVE RECEIVERS FOR CONSTRUCTION NOISE

**SHEET NUMBER**  
 圖號  
 60222570/TR19A/FIGURE 4.4.6

SHEET 5 OF 14

This drawing has been prepared for the use of AECOM's client. It may not be used, modified, reproduced or relied upon by third parties, except as approved by AECOM or as required by law. AECOM accepts no responsibility, and denies any liability whatsoever, to any party, for losses or claims on this drawing without AECOM's express written consent. Do not scale this document. All measurements must be obtained from the stated dimensions.

Pld File by: ZENGFYX  
 PATH: E:\projects\60222570\drawing\center\0a\TR19A\_478.dgn  
 Project Management Initials: Designer: Checked: Approved: ISO A1 594mm x 841mm



**NOTES:**

1. FOR LEGEND REFER TO DRAWING NO. 60222570/TR19A/FIGURE 4.4.2.
2. THIS DRAWING TO BE READ IN CONJUNCTION WITH DRAWING NOS. 60222570/TR19A/FIGURE 4.4.2 TO 4.4.15.



**PROJECT**

**HUNG SHUI KIU NEW DEVELOPMENT AREA PLANNING AND ENGINEERING STUDY - INVESTIGATION**

**CLIENT**



**CONSULTANT**

AECOM Asia Company Ltd.  
www.aecom.com

**SUB-CONSULTANTS**

**ISSUE/REVISION**

IR	DATE	DESCRIPTION	CHK

**STATUS**

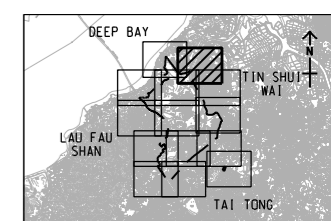
**SCALE**

A3 1:5000

**DIMENSION UNIT**

METRES

**KEY PLAN**



**PROJECT NO.**

60222570

**AGREEMENT NO.**

CE2/2011 (CE)

**SHEET TITLE**

LOCATIONS OF REPRESENTATIVE NOISE SENSITIVE RECEIVERS FOR CONSTRUCTION NOISE

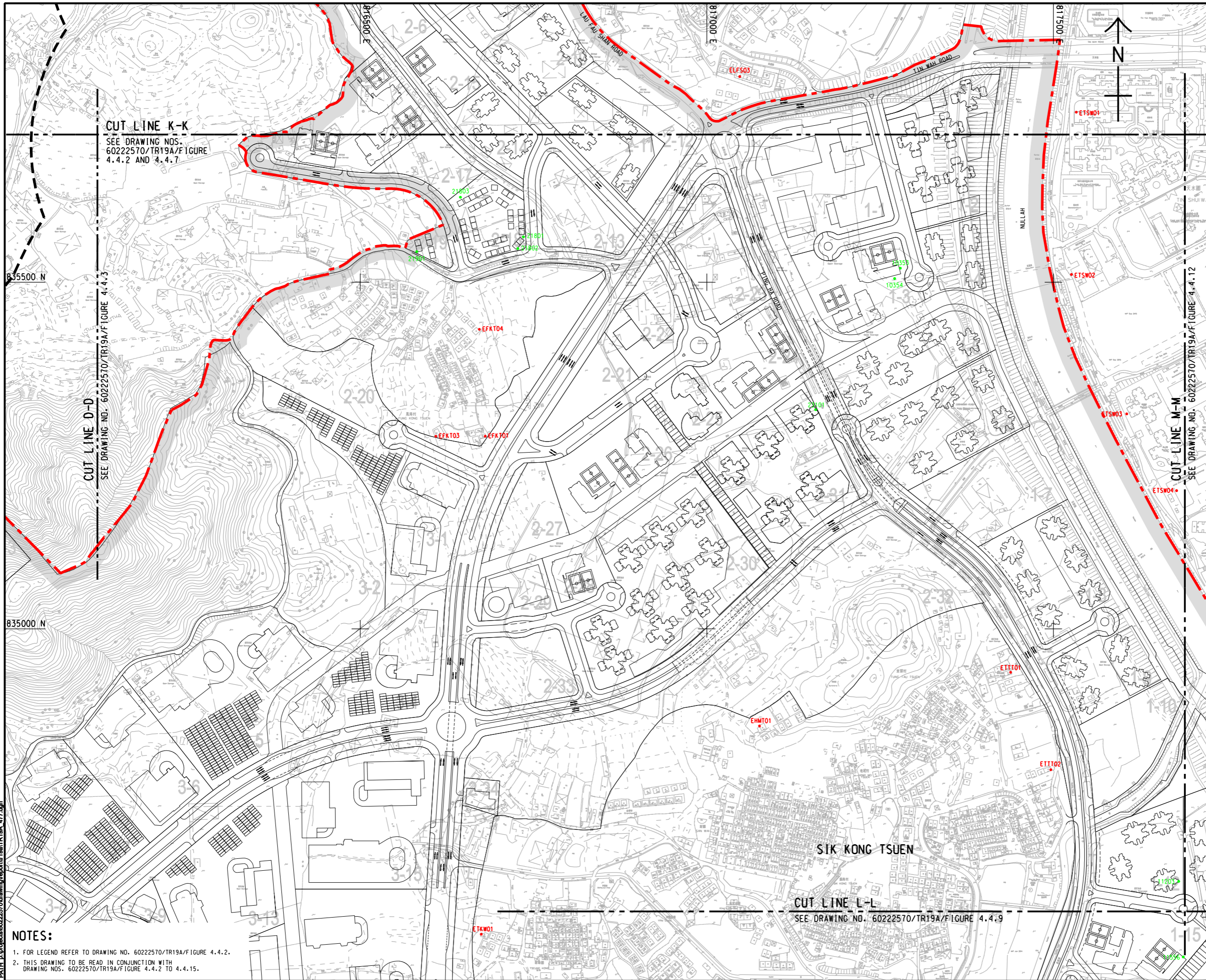
SHEET 6 OF 14

**SHEET NUMBER**

60222570/TR19A/FIGURE 4.4.7

This drawing has been prepared for the use of AECOM's client. It may not be used, modified, reproduced or relied upon by third parties, except as approved by AECOM or as required by law. AECOM accepts no responsibility, and denies any liability whatsoever, for any party that uses or relies on this drawing without AECOM's express written consent. Do not scale this document. All measurements must be obtained from the stated dimensions.

ISO A1 594mm x 841mm  
 Approved:  
 Checked:  
 Designer:  
 Project Management Initials:  
 Pld File by: ZENGFY  
 PATH: E:\projects\60222570\drawing\center\0a1\TR19A\_477.dgn



**AECOM**  
 PROJECT  
**HUNG SHUI KIU NEW DEVELOPMENT AREA PLANNING AND ENGINEERING STUDY - INVESTIGATION**

CLIENT  
  
 土木工程拓展署  
 Civil Engineering and Development Department  
  
 規劃署  
 Planning Department  
 CONSULTANT  
 工程顧問公司  
 AECOM Asia Company Ltd.  
 www.aecom.com

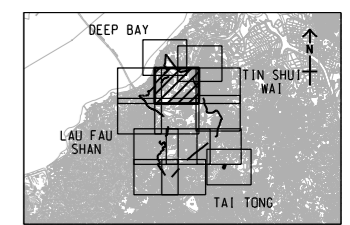
SUB-CONSULTANTS  
 分判工程顧問公司

**ISSUE/REVISION**  
 修訂

NO.	DATE	DESCRIPTION	CHK.

**STATUS**  
 階段

**SCALE**  
 比例  
 A3 1 : 5000  
**DIMENSION UNIT**  
 尺寸單位  
 METRES



**PROJECT NO.**  
 項目編號  
 60222570  
**AGREEMENT NO.**  
 協議編號  
 CE2/2011 (CE)

**SHEET TITLE**  
 圖紙名稱  
 LOCATIONS OF REPRESENTATIVE NOISE SENSITIVE RECEIVERS FOR CONSTRUCTION NOISE

**SHEET NUMBER**  
 圖紙編號  
 SHEET 7 OF 14

**SHEET NUMBER**  
 圖紙編號  
 60222570/TR19A/FIGURE 4.4.8

- NOTES:**
- FOR LEGEND REFER TO DRAWING NO. 60222570/TR19A/FIGURE 4.4.2.
  - THIS DRAWING TO BE READ IN CONJUNCTION WITH DRAWING NOS. 60222570/TR19A/FIGURE 4.4.2 TO 4.4.15.

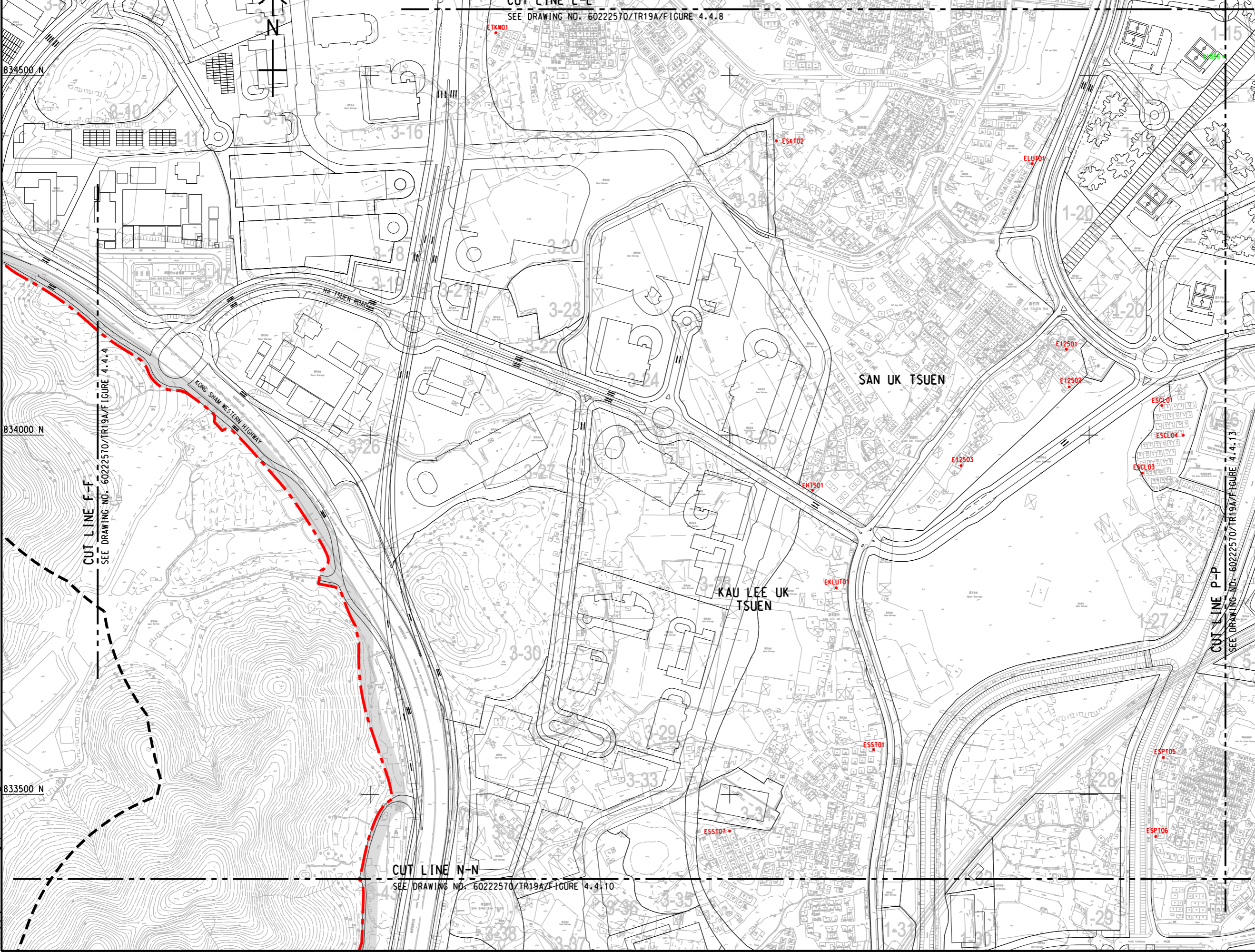
This drawing has been prepared for the use of AECOM's client. It may not be used, modified, reproduced or relied upon by third parties, except as approved by AECOM or as required by law. AECOM accepts no responsibility, and denies any liability whatsoever, for any party that uses or relies on this drawing without AECOM's express written consent. Do not scale this document. All measurements must be obtained from the related dimensions.



ISO A1 594mm x 841mm  
 Approved:  
 Checked:  
 Designer:  
 Project Management Initials:  
 Pld File by: ZENGFY  
 PATH: E:\projects\60222570\drawing\center\6a\TR19A\_478.dgn

**NOTES:**

- FOR LEGEND REFER TO DRAWING NO. 60222570/TR19A/FIGURE 4.4.2.
- THIS DRAWING TO BE READ IN CONJUNCTION WITH DRAWING NOS. 60222570/TR19A/FIGURE 4.4.2 TO 4.4.15.



**AECOM**

**PROJECT**  
 HUNG SHUI KIU NEW DEVELOPMENT AREA PLANNING AND ENGINEERING STUDY - INVESTIGATION

**CLIENT**  
 CEDD  
 土木工程拓展署  
 Civil Engineering and Development Department

**CONSULTANT**  
 AECOM Asia Company Ltd.  
 www.aecom.com

**SUB-CONSULTANTS**  
 分判工程顧問公司

**ISSUE/REVISION**

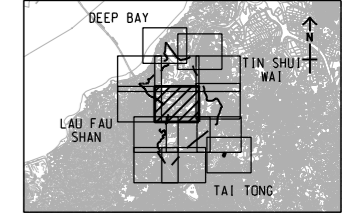
NO.	DATE	DESCRIPTION	CHK.

**STATUS**  
 現狀

**SCALE**  
 比例: A3 1:5000

**DIMENSION UNIT**  
 尺寸單位: METRES

**KEY PLAN**  
 索引圖: A3 1:30000



**PROJECT NO.**  
 項目編號: 60222570

**AGREEMENT NO.**  
 協議編號: CE2/2011 (CE)

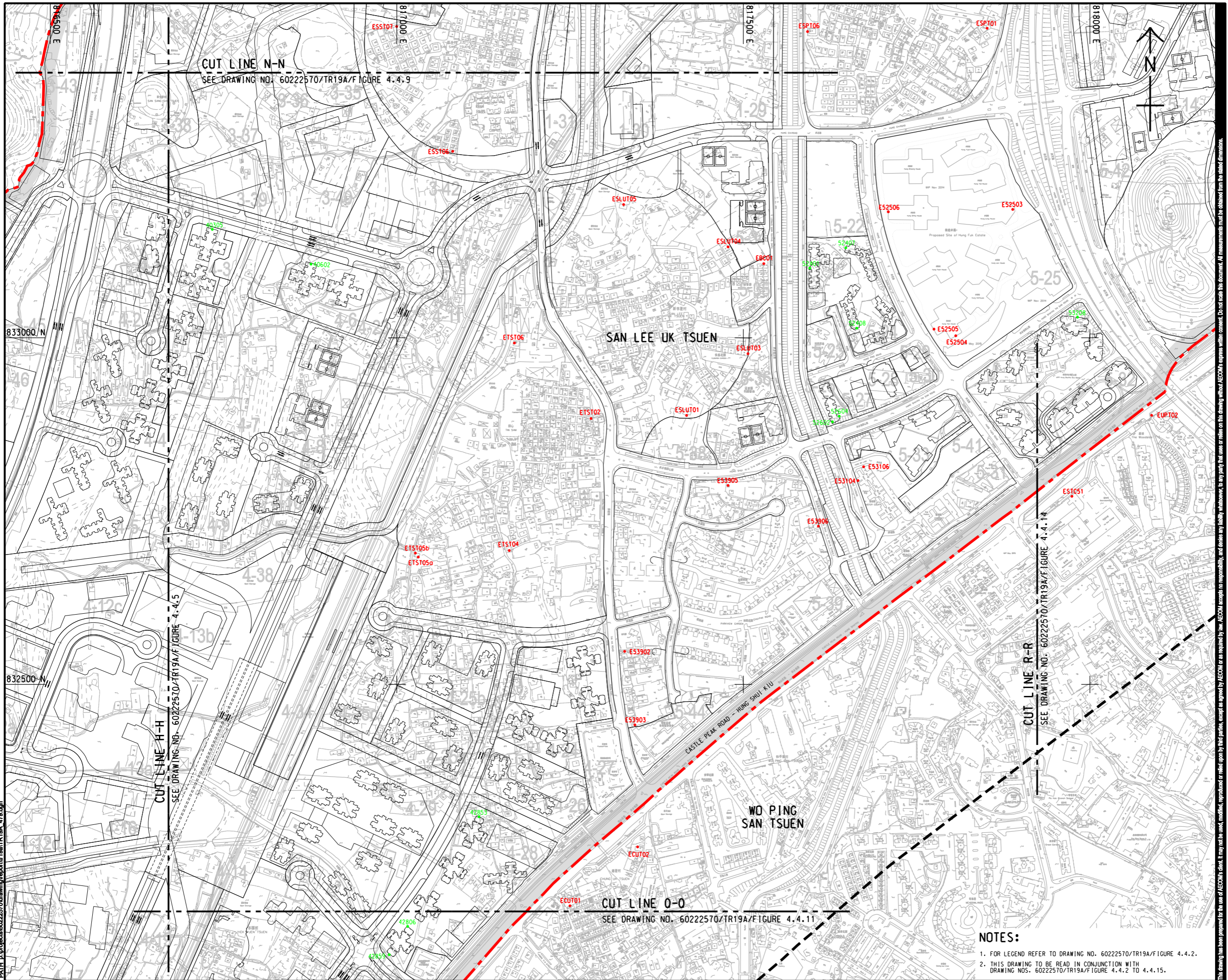
**SHEET TITLE**  
 圖紙名稱: LOCATIONS OF REPRESENTATIVE NOISE SENSITIVE RECEIVERS FOR CONSTRUCTION NOISE

**SHEET NUMBER**  
 圖紙編號: SHEET 8 OF 14

60222570/TR19A/FIGURE 4.4.9

This drawing has been prepared for the use of AECOM's client. It may not be used, modified, reproduced or relied upon by third parties, except as agreed by AECOM or as required by law. AECOM accepts no responsibility, and denies any liability whatsoever, for any party that uses or relies on this drawing without AECOM's express written consent. Do not scale this document. All measurements must be obtained from the related dimensions.

ISO A1 594mm x 841mm  
 Approved:  
 Checked:  
 Designer:  
 Project Management Initials:  
 Pld File by: ZENGFY  
 PATH: E:\projects\60222570\drawing\tr19a\tr19a\_479.dgn



**AECOM**

PROJECT  
 項目  
**HUNG SHUI KIU NEW DEVELOPMENT AREA PLANNING AND ENGINEERING STUDY - INVESTIGATION**

CLIENT  
 業主  
   
 土木工程拓展署 規劃署  
 Civil Engineering and Development Department Planning Department

CONSULTANT  
 工程顧問公司  
 AECOM Asia Company Ltd.  
 www.aecom.com

SUB-CONSULTANTS  
 分判工程顧問公司

**ISSUE/REVISION**  
 修訂

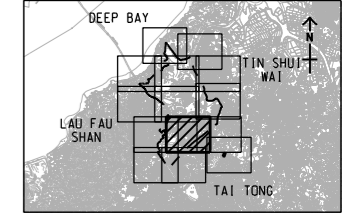
IR	DATE	DESCRIPTION	CHK.

**STATUS**  
 階段

**SCALE**  
 比例  
 A3 1 : 5000

**DIMENSION UNIT**  
 尺寸單位  
 METRES

**KEY PLAN**  
 索引圖  
 A3 1 : 300000



**PROJECT NO.**  
 項目編號  
 60222570

**AGREEMENT NO.**  
 協議編號  
 CE2/2011 (CE)

**SHEET TITLE**  
 圖紙名稱  
 LOCATIONS OF REPRESENTATIVE NOISE SENSITIVE RECEIVERS FOR CONSTRUCTION NOISE

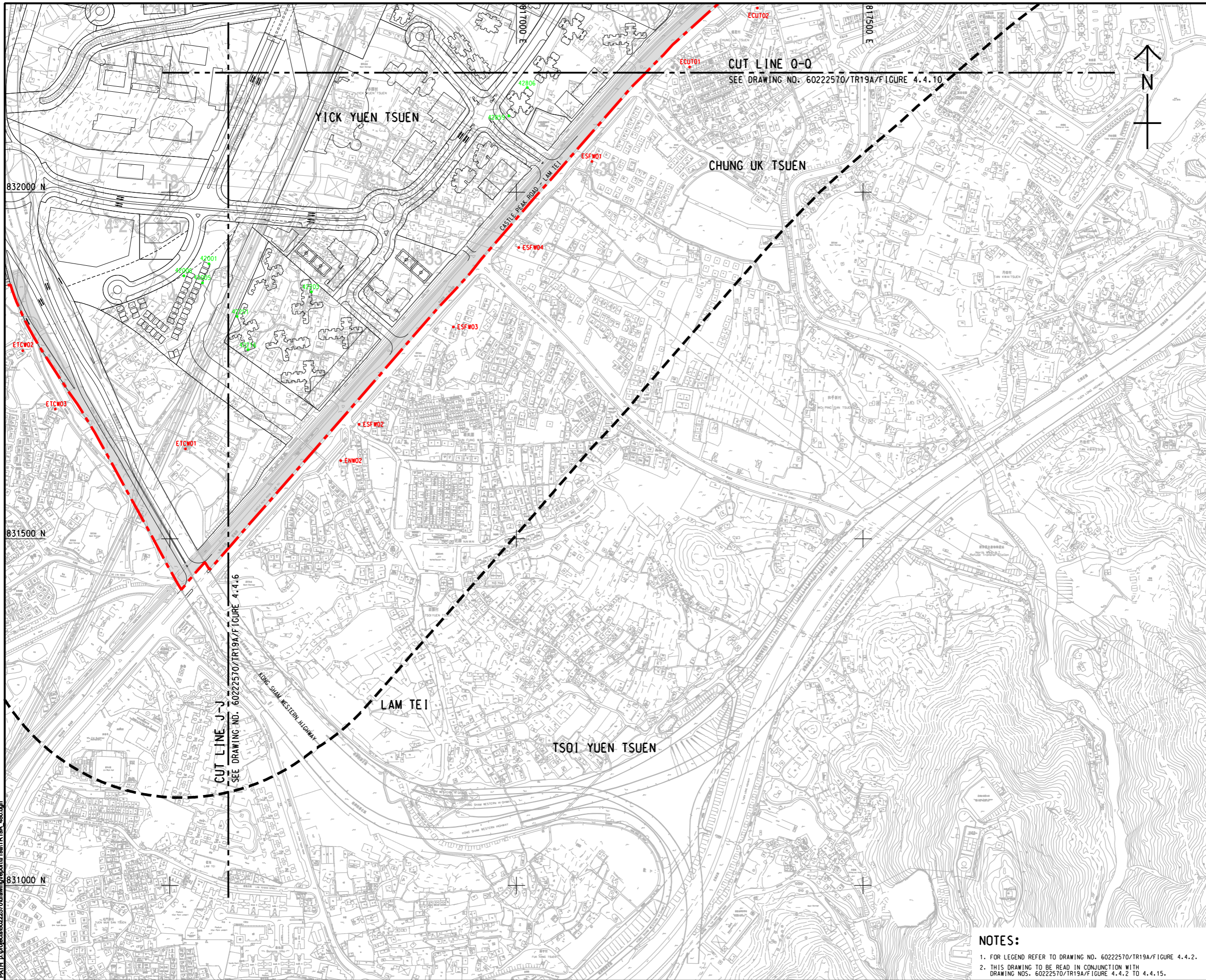
**SHEET NUMBER**  
 圖紙編號  
 60222570/TR19A/FIGURE 4.4.10

SEE DRAWING NO. 60222570/TR19A/FIGURE 4.4.11

- NOTES:**
- FOR LEGEND REFER TO DRAWING NO. 60222570/TR19A/FIGURE 4.4.2.
  - THIS DRAWING TO BE READ IN CONJUNCTION WITH DRAWING NOS. 60222570/TR19A/FIGURE 4.4.2 TO 4.4.15.



This drawing has been prepared for the use of AECOM's client. It may not be used, modified, reproduced or relied upon by third parties, except as approved by AECOM or as required by law. AECOM accepts no responsibility, and denies any liability whatsoever, for any party that uses or relies on this drawing without AECOM's express written consent. Do not scale this document. All measurements must be obtained from the related dimensions.

ISO A1 594mm x 841mm  
 Approved:  
 Checked:  
 Designer:  
 Project Management Initials:  
 Pld File by: ZENGFYX  
 PATH: E:\projects\60222570\drawing\center\6a\TR19A\_480.dgn



**AECOM**

**PROJECT**  
 HUNG SHUI KIU NEW  
 DEVELOPMENT AREA  
 PLANNING AND  
 ENGINEERING STUDY  
 - INVESTIGATION

**CLIENT**  
 業主  
   
 土木工程拓展署 規劃署  
 Civil Engineering and  
 Development Department Planning  
 Department

**CONSULTANT**  
 工程顧問公司  
 AECOM Asia Company Ltd.  
 www.aecom.com

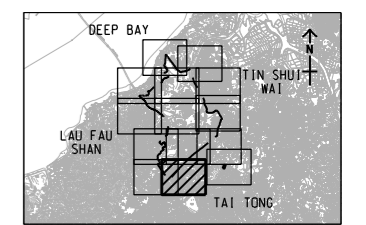
**SUB-CONSULTANTS**  
 分判工程顧問公司

**ISSUE/REVISION**  
 修訂

IR	DATE	DESCRIPTION	CHK.
修訂	日期	內容摘要	核實

**STATUS**  
 階段

**SCALE**  
 比例  
 A3 1: 5000  
**KEY PLAN** A3 1: 30000  
 索引圖



**PROJECT NO.**  
 項目編號  
 60222570

**AGREEMENT NO.**  
 協議編號  
 CE2/2011 (CE)

**SHEET TITLE**  
 圖名  
 LOCATIONS OF REPRESENTATIVE  
 NOISE SENSITIVE RECEIVERS  
 FOR CONSTRUCTION NOISE  
 SHEET 10 OF 14

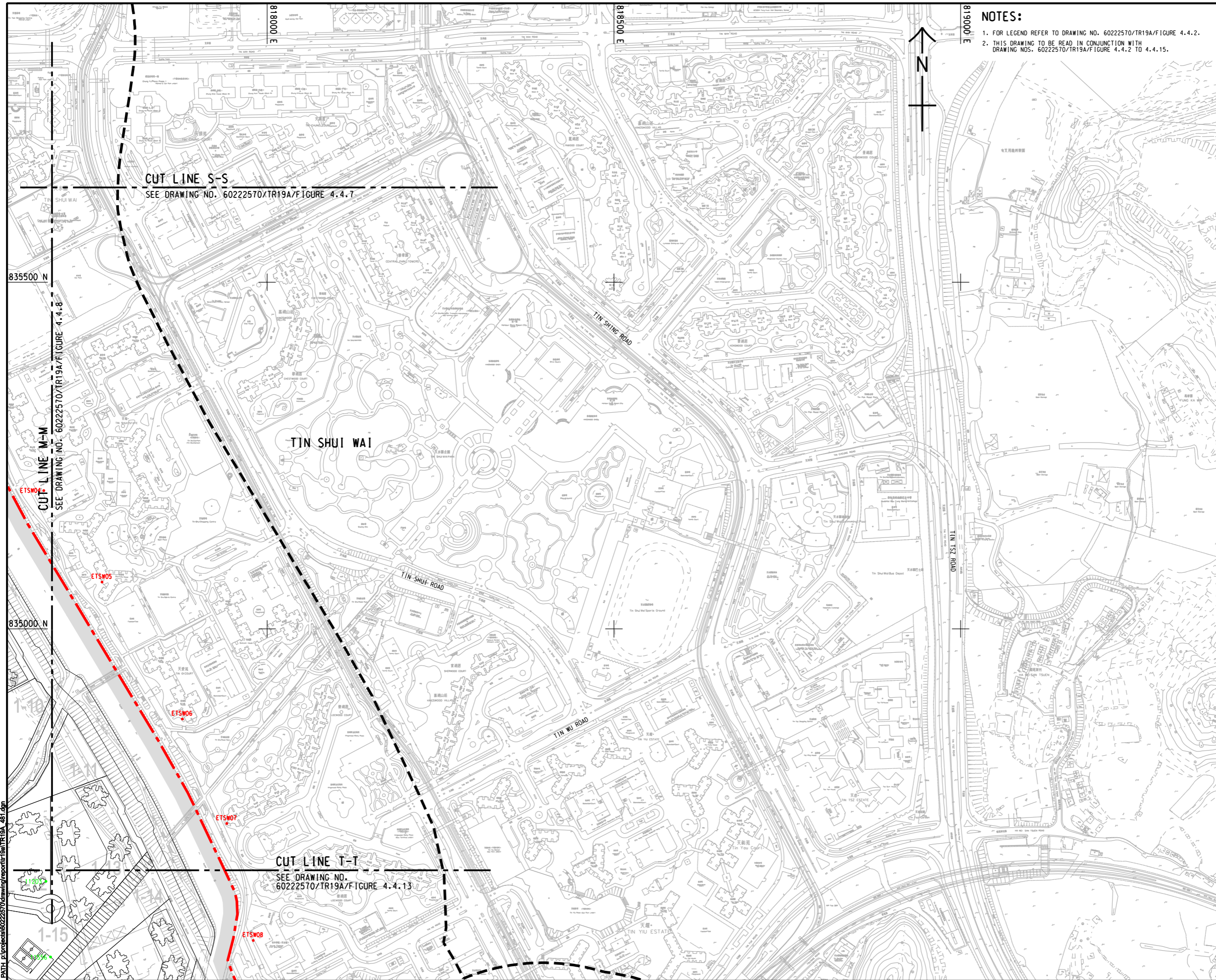
**SHEET NUMBER**  
 圖號  
 60222570/TR19A/FIGURE 4.4.11

**NOTES:**

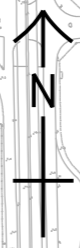
- FOR LEGEND REFER TO DRAWING NO. 60222570/TR19A/FIGURE 4.4.2.
- THIS DRAWING TO BE READ IN CONJUNCTION WITH DRAWING NOS. 60222570/TR19A/FIGURE 4.4.2 TO 4.4.15.

This drawing has been prepared for the use of AECOM's client. It may not be used, modified, reproduced or relied upon by third parties, except as required by law. AECOM accepts no responsibility, and disclaims any liability whatsoever, for any party that uses or relies on this drawing without AECOM's express written consent. Do not scale this document. All measurements must be obtained from the stated dimensions.

ISO A1 594mm x 841mm  
 Approved:  
 Checked:  
 Designer:  
 Project Management Initials:  
 Pld File by: ZENGFY  
 PATH: E:\projects\60222570\drawing\center\0a\TR19A\_481.dgn



- NOTES:**
- FOR LEGEND REFER TO DRAWING NO. 60222570/TR19A/FIGURE 4.4.2.
  - THIS DRAWING TO BE READ IN CONJUNCTION WITH DRAWING NOS. 60222570/TR19A/FIGURE 4.4.2 TO 4.4.15.



**AECOM**

**PROJECT**  
 HUNG SHUI KIU NEW DEVELOPMENT AREA PLANNING AND ENGINEERING STUDY - INVESTIGATION

**CLIENT**  
 CEDD  
 土木工程拓展署  
 Civil Engineering and Development Department

**CONSULTANT**  
 AECOM Asia Company Ltd.  
 www.aecom.com

**SUB-CONSULTANTS**  
 分判工程顧問公司

**ISSUE/REVISION**  
 修訂

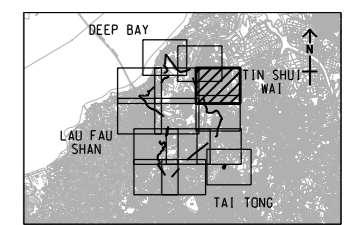
IR	DATE	DESCRIPTION	CHK.

**STATUS**  
 階段

**SCALE**  
 比例  
 A3 1:5000

**DIMENSION UNIT**  
 尺寸單位  
 METRES

**KEY PLAN** A3 1:300000



**PROJECT NO.**  
 項目編號  
 60222570

**AGREEMENT NO.**  
 協議編號  
 CE2/2011 (CE)

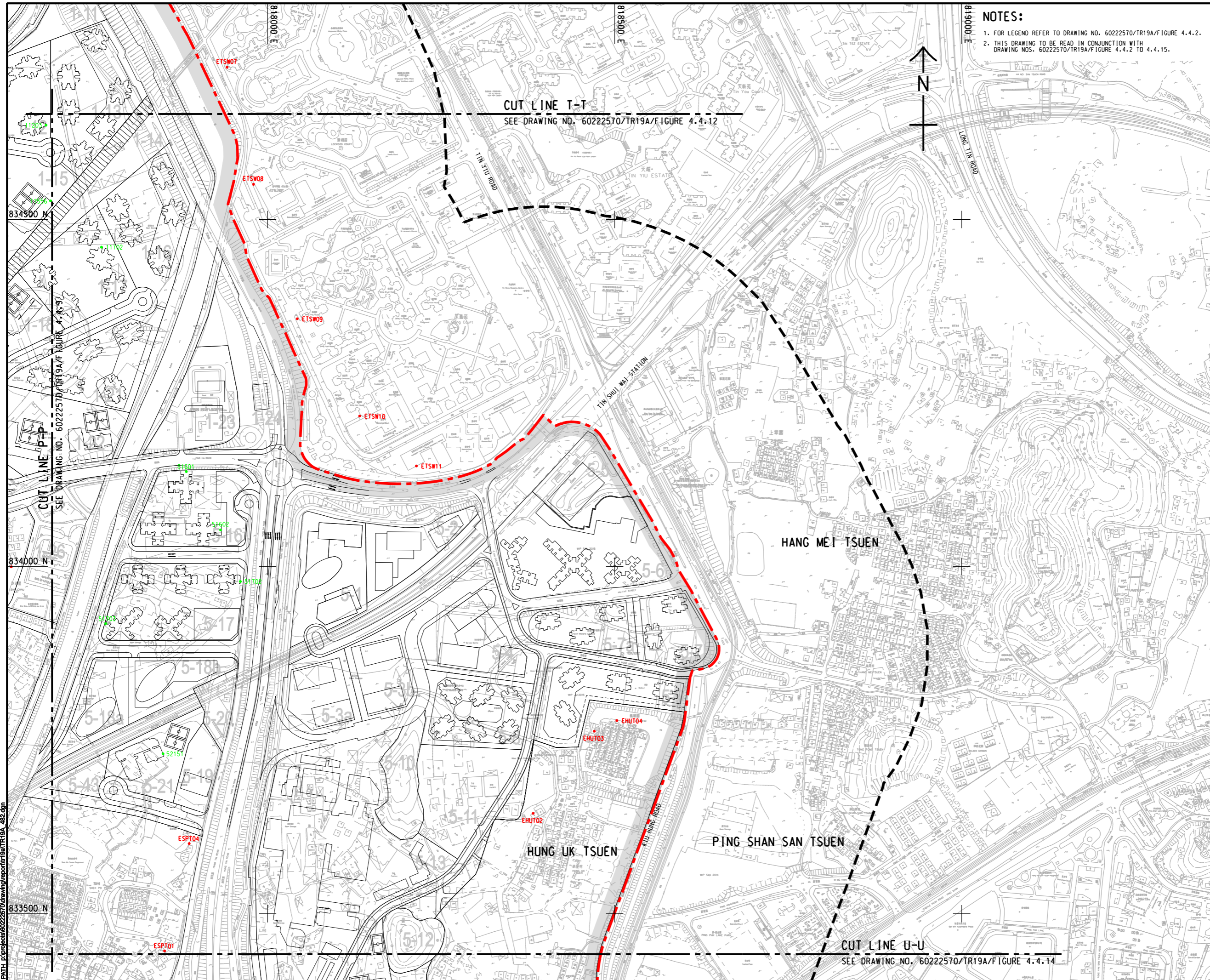
**SHEET TITLE**  
 圖紙名稱  
 LOCATIONS OF REPRESENTATIVE NOISE SENSITIVE RECEIVERS FOR CONSTRUCTION NOISE

**SHEET NUMBER**  
 圖紙編號  
 SHEET 11 OF 14

60222570/TR19A/FIGURE 4.4.12

This drawing has been prepared for the use of AECOM's client. It may not be used, modified, reproduced or relied upon by third parties, except as agreed by AECOM or as required by law. AECOM accepts no responsibility, and denies any liability whatsoever, for any party that uses or relies on this drawing without AECOM's express written consent. Do not scale this document. All measurements must be obtained from the stated dimensions.

ISO A1 594mm x 841mm  
 Approved:  
 Checked:  
 Designer:  
 Project Management Initials:  
 Pld File by: ZENGFY  
 PATH: P:\projects\60222570\drawing\center\0a1\TR19A\_482.dgn



**NOTES:**

1. FOR LEGEND REFER TO DRAWING NO. 60222570/TR19A/FIGURE 4.4.2.
2. THIS DRAWING TO BE READ IN CONJUNCTION WITH DRAWING NOS. 60222570/TR19A/FIGURE 4.4.2 TO 4.4.15.



**PROJECT**  
**HUNG SHUI KIU NEW DEVELOPMENT AREA PLANNING AND ENGINEERING STUDY - INVESTIGATION**

**CLIENT**  
 土木工程師署  
 Civil Engineering and Development Department

**規劃署**  
 Planning Department

**CONSULTANT**  
 工程顧問公司  
 AECOM Asia Company Ltd.  
 www.aecom.com

**SUB-CONSULTANTS**  
 分判工程顧問公司

**ISSUE/REVISION**  
 修訂

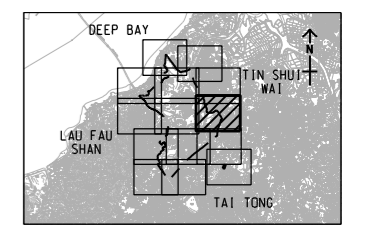
IR	DATE	DESCRIPTION	CHK.

**STATUS**  
 階段

**SCALE**  
 比例  
 A3 1 : 5000

**DIMENSION UNIT**  
 尺寸單位  
 METRES

**KEY PLAN** A3 1 : 300000  
 索引圖



**PROJECT NO.**  
 項目編號  
 60222570

**AGREEMENT NO.**  
 協議編號  
 CE2/2011 (CE)

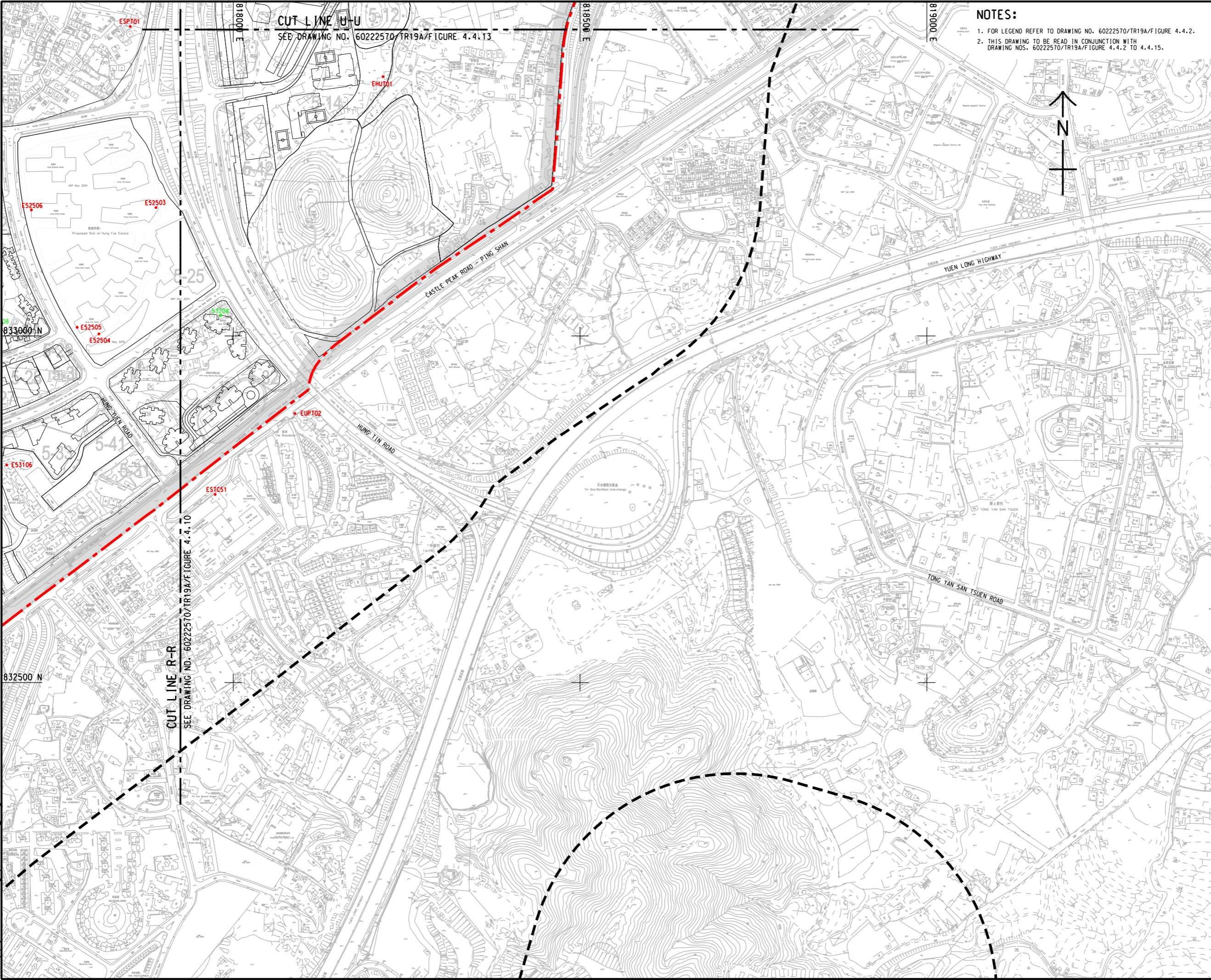
**SHEET TITLE**  
 圖紙名稱  
 LOCATIONS OF REPRESENTATIVE NOISE SENSITIVE RECEIVERS FOR CONSTRUCTION NOISE

SHEET 12 OF 14

**SHEET NUMBER**  
 圖紙編號  
 60222570/TR19A/FIGURE 4.4.13

This drawing has been prepared for the use of AECOM's client. It may not be used, modified, reproduced or relied upon by third parties, except as approved by AECOM or as required by law. AECOM accepts no responsibility, and denies any liability whatsoever, to any party, for losses or claims on this drawing without AECOM's express written consent. Do not scale this document. All measurements must be obtained from the stated dimensions.

ISO A1 594mm x 841mm  
 Approved:  
 Checked:  
 Designer:  
 Project Management Initials:  
 Pld File by: ZENGFY  
 PATH: P:\projects\60222570\drawing\pcenter\6a\TR19A\_483.dgn



**NOTES:**

- FOR LEGEND REFER TO DRAWING NO. 60222570/TR19A/FIGURE 4.4.2.
- THIS DRAWING TO BE READ IN CONJUNCTION WITH DRAWING NOS. 60222570/TR19A/FIGURE 4.4.2 TO 4.4.15.

**AECOM**

**PROJECT**  
 HUNG SHUI KIU NEW DEVELOPMENT AREA PLANNING AND ENGINEERING STUDY - INVESTIGATION

**CLIENT**  
 CEDD  
 土木工程拓展署  
 Civil Engineering and Development Department

**CONSULTANT**  
 AECOM Asia Company Ltd.  
 www.aecom.com

**SUB-CONSULTANTS**  
 分判工程顧問公司

**ISSUE/REVISION**

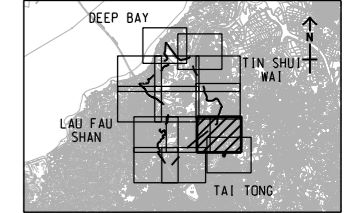
NO.	DATE	DESCRIPTION	CHK.

**STATUS**  
 現狀

**SCALE**  
 比例: A3 1:5000

**DIMENSION UNIT**  
 尺寸單位: METRES

**KEY PLAN**  
 索引圖: A3 1:300000



**PROJECT NO.**  
 項目編號: 60222570

**AGREEMENT NO.**  
 協議編號: CE2/2011 (CE)

**SHEET TITLE**  
 圖名: LOCATIONS OF REPRESENTATIVE NOISE SENSITIVE RECEIVERS FOR CONSTRUCTION NOISE

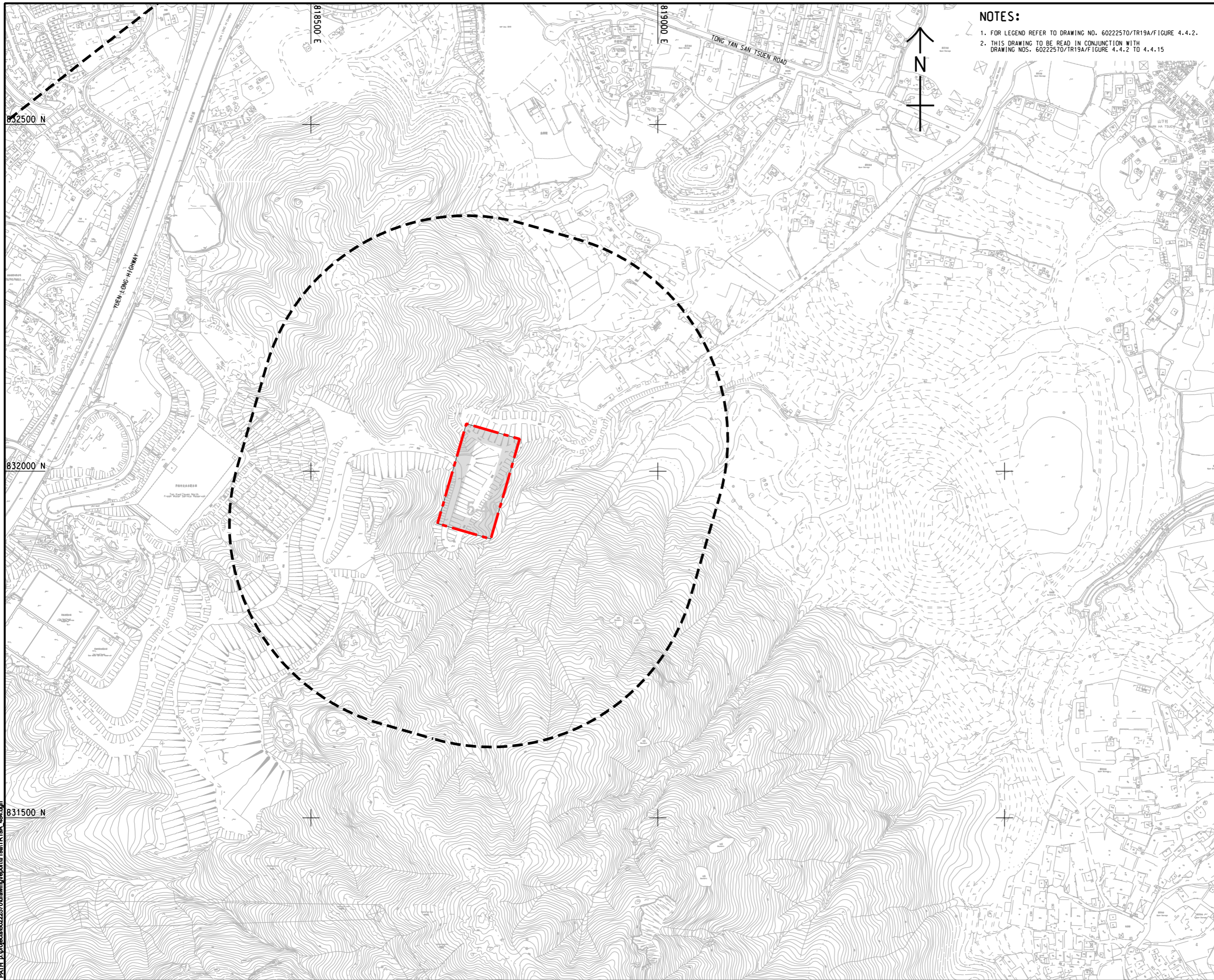
**SHEET NUMBER**  
 圖號: 60222570/TR19A/FIGURE 4.4.14

SHEET 13 OF 14

This drawing has been prepared for the use of AECOM's client. It may not be used, modified, reproduced or relied upon by third parties, except as approved by AECOM or as required by law. AECOM accepts no responsibility, and denies any liability whatsoever, to any party that uses or relies on this drawing without AECOM's express written consent. Do not scale this drawing. All measurements must be obtained from the stated dimensions.

ISO A1 594mm x 841mm  
 Approved:  
 Checked:  
 Designer:  
 Project Management Initials:

Pld File by: ZENGFY  
 PATH: E:\projects\60222570\drawing\center\0a1\TR19A\_48.dgn



**NOTES:**

1. FOR LEGEND REFER TO DRAWING NO. 60222570/TR19A/FIGURE 4.4.2.
2. THIS DRAWING TO BE READ IN CONJUNCTION WITH DRAWING NOS. 60222570/TR19A/FIGURE 4.4.2 TO 4.4.15

**AECOM**

**PROJECT**  
 項目

**HUNG SHUI KIU NEW DEVELOPMENT AREA PLANNING AND ENGINEERING STUDY - INVESTIGATION**

**CLIENT**  
 業主


  
 土木工程拓展署  
 Civil Engineering and Development Department  
 規劃署  
 Planning Department

**CONSULTANT**  
 工程顧問公司  
 AECOM Asia Company Ltd.  
 www.aecom.com

**SUB-CONSULTANTS**  
 分判工程顧問公司

**ISSUE/REVISION**  
 修訂

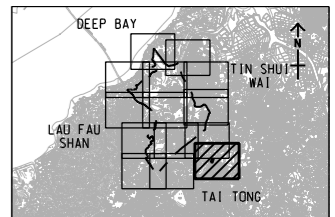
IR	DATE	DESCRIPTION	CHK.
修訂	日期	內容摘要	核對

**STATUS**  
 階段

**SCALE**                      **DIMENSION UNIT**  
 比例                              尺寸單位

A3 1 : 5000                      METRES

**KEY PLAN**    A3 1 : 300000



**PROJECT NO.**                      **AGREEMENT NO.**  
 項目編號                              協議編號

60222570                              CE2/2011 (CE)

**SHEET TITLE**  
 圖紙名稱

**LOCATIONS OF REPRESENTATIVE NOISE SENSITIVE RECEIVERS FOR CONSTRUCTION NOISE**

SHEET 14 OF 14

**SHEET NUMBER**  
 圖紙編號

60222570/TR19A/FIGURE 4.4.15

This drawing has been prepared for the use of AECOM's client. It may not be used, modified, reproduced or relied upon by third parties, except as agreed by AECOM or as required by law. AECOM accepts no responsibility, and denies any liability whatsoever, to any party, for uses or reliance on this drawing without AECOM's express written consent. Do not scale this document. All measurements must be obtained from the stated dimensions.