





NOTE:

1. THIS DRAWING TO BE READ IN CONJUNCTION WITH DRAWING NOS. 60222570/FIGURE 4.4.17 TO FIGURE 4.4.30.

LEGEND:

-  PROJECT BOUNDARY
-  300m ASSESSMENT AREA BOUNDARY
-  REPRESENTATIVE NOISE SENSITIVE RECEIVERS
-  REPRESENTATIVE NOISE SENSITIVE RECEIVER UNDER UNMITIGATED SCENARIO



PROJECT
HUNG SHUI KIU NEW DEVELOPMENT AREA PLANNING AND ENGINEERING STUDY - INVESTIGATION

CLIENT
 
 土木工程拓展署 規劃署
 Civil Engineering and Development Department Planning Department

CONSULTANT
 工務顧問公司
 AECOM Asia Company Ltd.
 www.aecom.com

SUB-CONSULTANTS
 分判工程顧問公司

ISSUE/REVISION

IR	DATE	DESCRIPTION	CHK.
號	日期	內容摘要	號

STATUS

SCALE **DIMENSION UNIT**
 比例 尺寸單位
 A3 1 : 24000 METRES

KEY PLAN

PROJECT NO. **AGREEMENT NO.**
 項目編號 協議編號
 60222570 CE2/2011 (CE)

SHEET TITLE
 圖紙名稱
 LOCATIONS OF REPRESENTATIVE NOISE SENSITIVE RECEIVERS FOR ROAD TRAFFIC NOISE - KEY PLAN

SHEET NUMBER
 圖紙號碼
 60222570/TR19A/FIGURE 4.4.16

This drawing has been prepared for the use of AECOM's client. It may not be used, modified, reproduced or relied upon by third parties, except as agreed by AECOM or as required by law. AECOM accepts no responsibility, and denies any liability whatsoever, to any party for losses or claims on this drawing without AECOM's express written consent. Do not scale this document. All measurements must be obtained from the stated dimensions.

ISO A1 594mm x 841mm
Approved:
Checked:
Designer:
Project Management Initials:
Pld File by: ANHL
PATH: E:\projects\60222570\drawing\center\0a\TR19A_737.dgn

NOTE:

1. THIS DRAWING TO BE READ IN CONJUNCTION WITH DRAWING NOS. 60222570/TR19A/FIGURE 4.4.17 TO 4.4.30.

LEGEND:

- PROJECT BOUNDARY
- 300m ASSESSMENT AREA BOUNDARY
- E2-0A.R01 REPRESENTATIVE NOISE SENSITIVE RECEIVERS
- P2-16.E01 REPRESENTATIVE NOISE SENSITIVE RECEIVER UNDER UNMITIGATED SCENARIO

后海灣 (深坑灣)
DEEP BAY (SHENZHEN WAN)

DEEP BAY

HANG HAU TSUEN

LAU FAU SHAN

SHA KONG WAI

CUT LINE A-A

SEE DRAWING NOS. 60222570/TR19A/FIGURE 4.4.18 AND 4.4.23

CUT LINE B-B

SEE DRAWING NO. 60222570/TR19A/FIGURE 4.4.22

This drawing has been prepared for the use of AECOM's client. It may not be used, modified, reproduced or relied upon by third parties, except as required by law. AECOM accepts no responsibility, and denies any liability whatsoever, for any party that uses or relies on this drawing without AECOM's express written consent. Do not scale this document. All measurements must be obtained from the stated dimensions.



PROJECT

HUNG SHUI KIU NEW DEVELOPMENT AREA PLANNING AND ENGINEERING STUDY - INVESTIGATION

CLIENT



CONSULTANT

AECOM Asia Company Ltd.
www.aecom.com

SUB-CONSULTANTS

分列工程顧問公司

ISSUE/REVISION

IR	DATE	DESCRIPTION	CHK

STATUS

SCALE

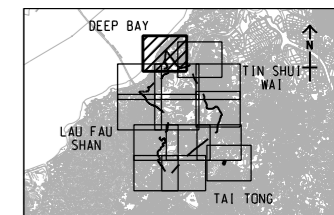
A3 1:5000

DIMENSION UNIT

METRES

KEY PLAN

A3 1:30000



PROJECT NO.

60222570

AGREEMENT NO.

CE2/2011 (CE)

SHEET TITLE

LOCATIONS OF REPRESENTATIVE NOISE SENSITIVE RECEIVERS FOR ROAD TRAFFIC NOISE

SHEET 1 OF 14

SHEET NUMBER

60222570/TR19A/FIGURE 4.4.17

ISO A1 594mm x 841mm
 Approved:
 Checked:
 Designer:
 Project Management Initials:
 Pld File by: ANH
 PATH: E:\projects\60222570\drawing\paper\6a\TR19A_738.dgn

NOTES:

1. FOR LEGEND REFER TO DRAWING NO. 60222570/TR19A/FIGURE 4.4.17.
2. THIS DRAWING TO BE READ IN CONJUNCTION WITH DRAWING NOS. 60222570/TR19A/FIGURE 4.4.17 TO 4.4.30.

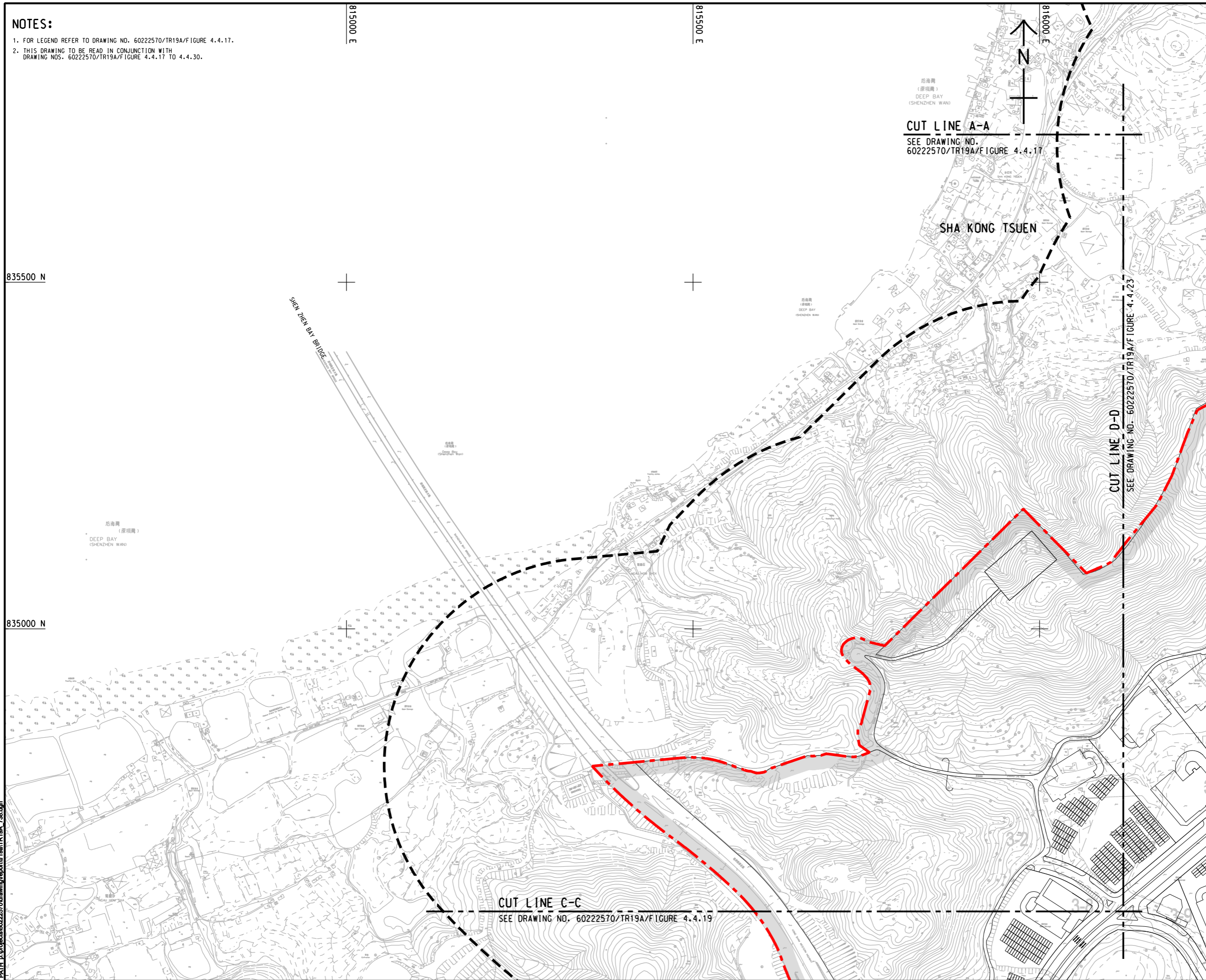
815000 E

815500 E

816000 E

835500 N

835000 N



CUT LINE A-A

SEE DRAWING NO. 60222570/TR19A/FIGURE 4.4.17

SHA KONG TSUEN

CUT LINE D-D

SEE DRAWING NO. 60222570/TR19A/FIGURE 4.4.23

CUT LINE C-C

SEE DRAWING NO. 60222570/TR19A/FIGURE 4.4.19



PROJECT

HUNG SHUI KIU NEW DEVELOPMENT AREA PLANNING AND ENGINEERING STUDY - INVESTIGATION

CLIENT



土木工程拓展署
Civil Engineering and Development Department



規劃署
Planning Department

CONSULTANT

AECOM Asia Company Ltd.
www.aecom.com

SUB-CONSULTANTS

ISSUE/REVISION

NO.	DATE	DESCRIPTION	CHK.

STATUS

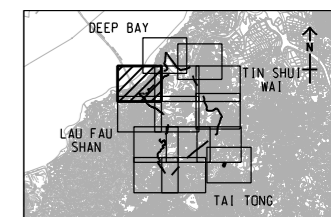
SCALE

A3 1:5000

DIMENSION UNIT

METRES

KEY PLAN A3 1:300000



PROJECT NO.

60222570

AGREEMENT NO.

CE2/2011 (CE)

SHEET TITLE

LOCATIONS OF REPRESENTATIVE NOISE SENSITIVE RECEIVERS FOR ROAD TRAFFIC NOISE

SHEET 2 OF 14

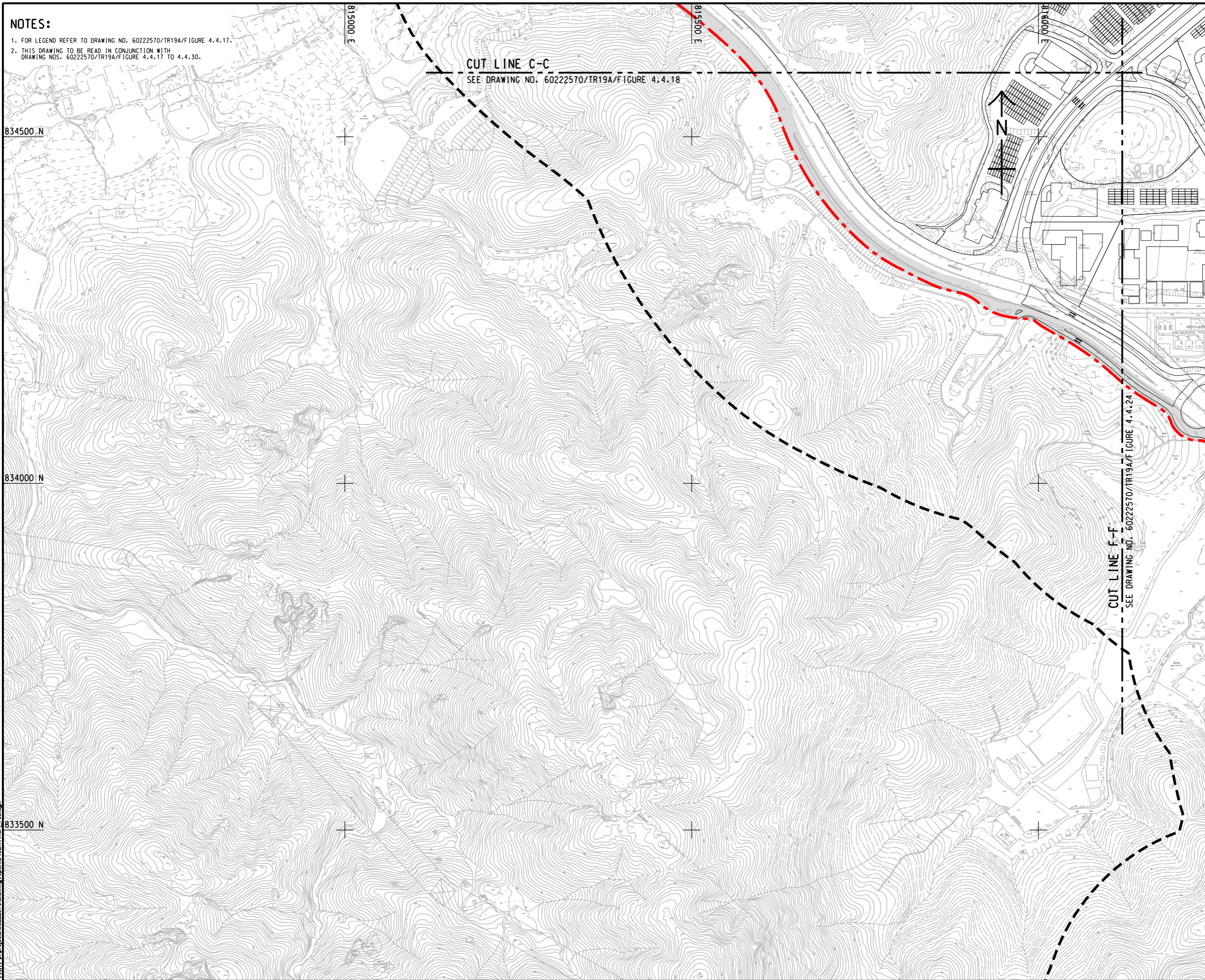
SHEET NUMBER

60222570/TR19A/FIGURE 4.4.18

This drawing has been prepared for the use of AECOM's client. It may not be used, modified, reproduced or relied upon by third parties, except as agreed by AECOM or as required by law. AECOM accepts no responsibility, and denies any liability whatsoever, for any party that uses or relies on this drawing without AECOM's express written consent. Do not scale this document. All measurements must be obtained from the stated dimensions.

ISO A1 594mm x 841mm
Approved:
Checked:
Designer:
Project Management Initials:
Pld File by: ANHLE\60222570\drawing\pcenter\0a1\TR19A_739.dgn

NOTES:
 1. FOR LEGEND REFER TO DRAWING NO. 60222570/TR19A/FIGURE 4.4.17.
 2. THIS DRAWING TO BE READ IN CONJUNCTION WITH DRAWING NOS. 60222570/TR19A/FIGURE 4.4.17 TO 4.4.30.



CUT LINE C-C
 SEE DRAWING NO. 60222570/TR19A/FIGURE 4.4.18

CUT LINE F-F
 SEE DRAWING NO. 60222570/TR19A/FIGURE 4.4.24

This drawing has been prepared for the use of AECOM's client. It may not be used, modified, reproduced or relied upon by third parties, except as agreed by AECOM or as required by law. AECOM accepts no responsibility, and denies any liability whatsoever, to any party, for uses or relies on this drawing without AECOM's express written consent. Do not scale this document. All measurements must be obtained from the stated dimensions.

AECOM

PROJECT
 項目
HUNG SHUI KIU NEW DEVELOPMENT AREA PLANNING AND ENGINEERING STUDY - INVESTIGATION

CLIENT
 業主
 
 土木工程拓展署 規劃署
 Civil Engineering and Development Department Planning Department

CONSULTANT
 工程顧問公司
 AECOM Asia Company Ltd.
 www.aecom.com

SUB-CONSULTANTS
 分判工程顧問公司

ISSUE/REVISION
 修訂

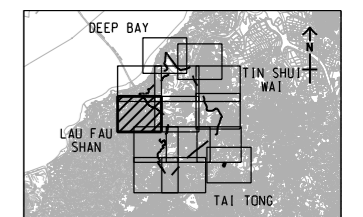
IR	DATE	DESCRIPTION	CHK.
修訂	日期	內容摘要	校核

STATUS
 階段

SCALE **DIMENSION UNIT**
 比例 尺寸單位

A3 1 : 5000 METRES

KEY PLAN A3 1 : 30000



PROJECT NO. **AGREEMENT NO.**
 項目編號 協議編號
 60222570 CE2/2011 (CE)

SHEET TITLE
 圖紙名稱

LOCATIONS OF REPRESENTATIVE NOISE SENSITIVE RECEIVERS FOR ROAD TRAFFIC NOISE

SHEET 3 OF 14

SHEET NUMBER
 圖紙編號

60222570/TR19A/FIGURE 4.4.19

Pld File by: YANGYV
 PATH: F:\projects\60222570\Drawing\REPORT\TR19A\TR19A_740.dgn
 ISO A1 594mm x 841mm
 Approved:
 Checked:
 Designer:
 Project Management Initials:

NOTES:
 1. FOR LEGEND REFER TO DRAWING NO. 60222570/TR19A/FIGURE 4.4.17.
 2. THIS DRAWING TO BE READ IN CONJUNCTION WITH DRAWING NOS. 60222570/TR19A/FIGURE 4.4.17 TO 4.4.30.

815500 E

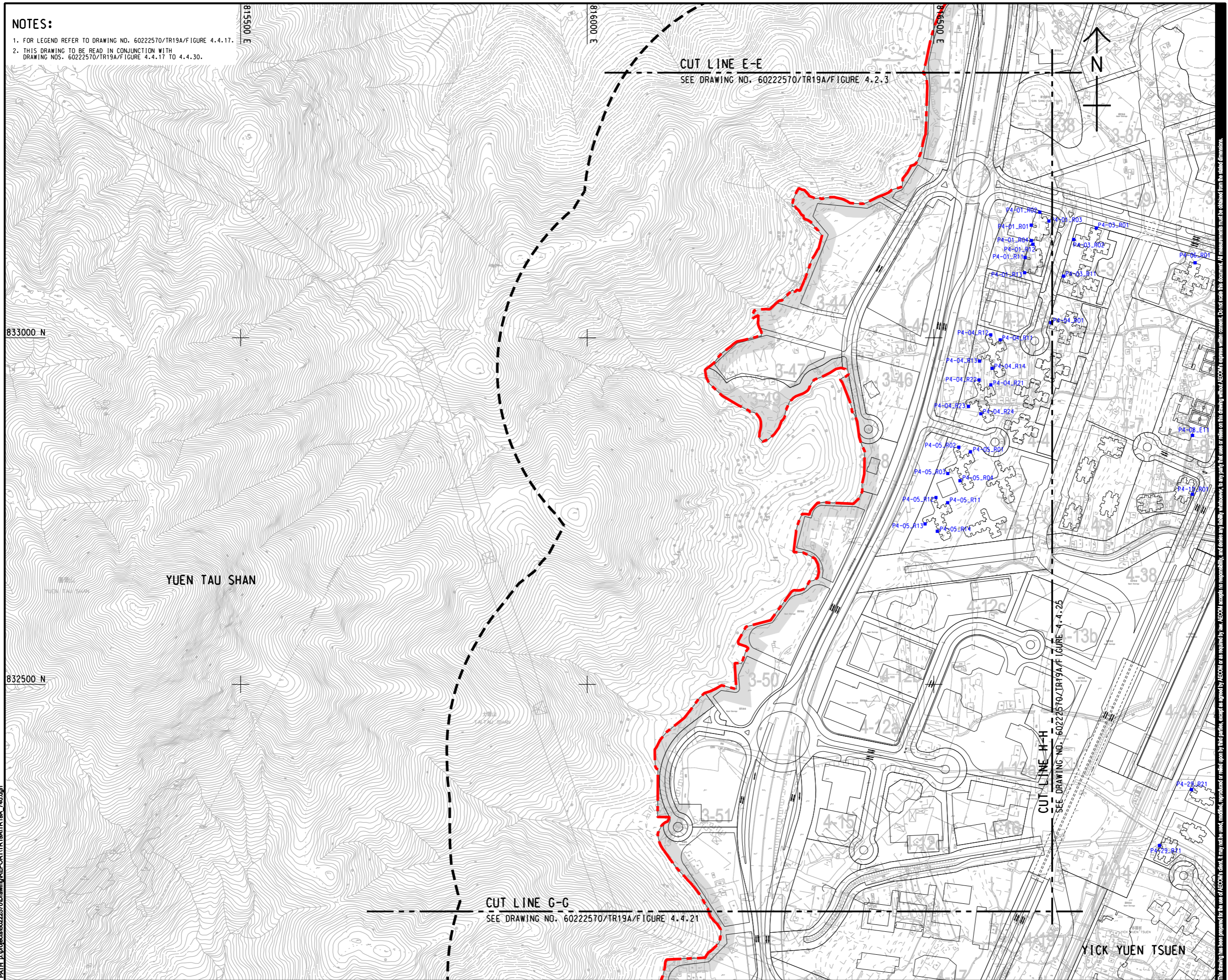
816000 E

816500 E

833000 N



832500 N

Pld File by: YANGYV
PATH: F:\projects\60222570\Drawing\REPORT\TR19A\TR19A_740.dgn



AECOM

PROJECT
 項目
HUNG SHUI KIU NEW DEVELOPMENT AREA PLANNING AND ENGINEERING STUDY - INVESTIGATION

CLIENT
 業主
 
 土木工程拓展署 規劃署
 Civil Engineering and Development Department Planning Department

CONSULTANT
 工程顧問公司
 AECOM Asia Company Ltd.
 www.aecom.com

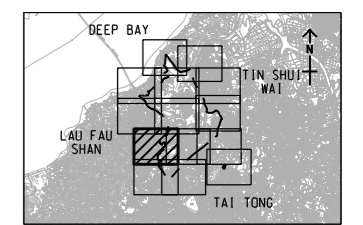
SUB-CONSULTANTS
 分判工程顧問公司

ISSUE/REVISION
 修訂

IR	DATE	DESCRIPTION	CHK.

STATUS
 階段

SCALE
 比例
 A3 1 : 5000
KEY PLAN A3 1 : 30000
DIMENSION UNIT
 尺寸單位
 METRES

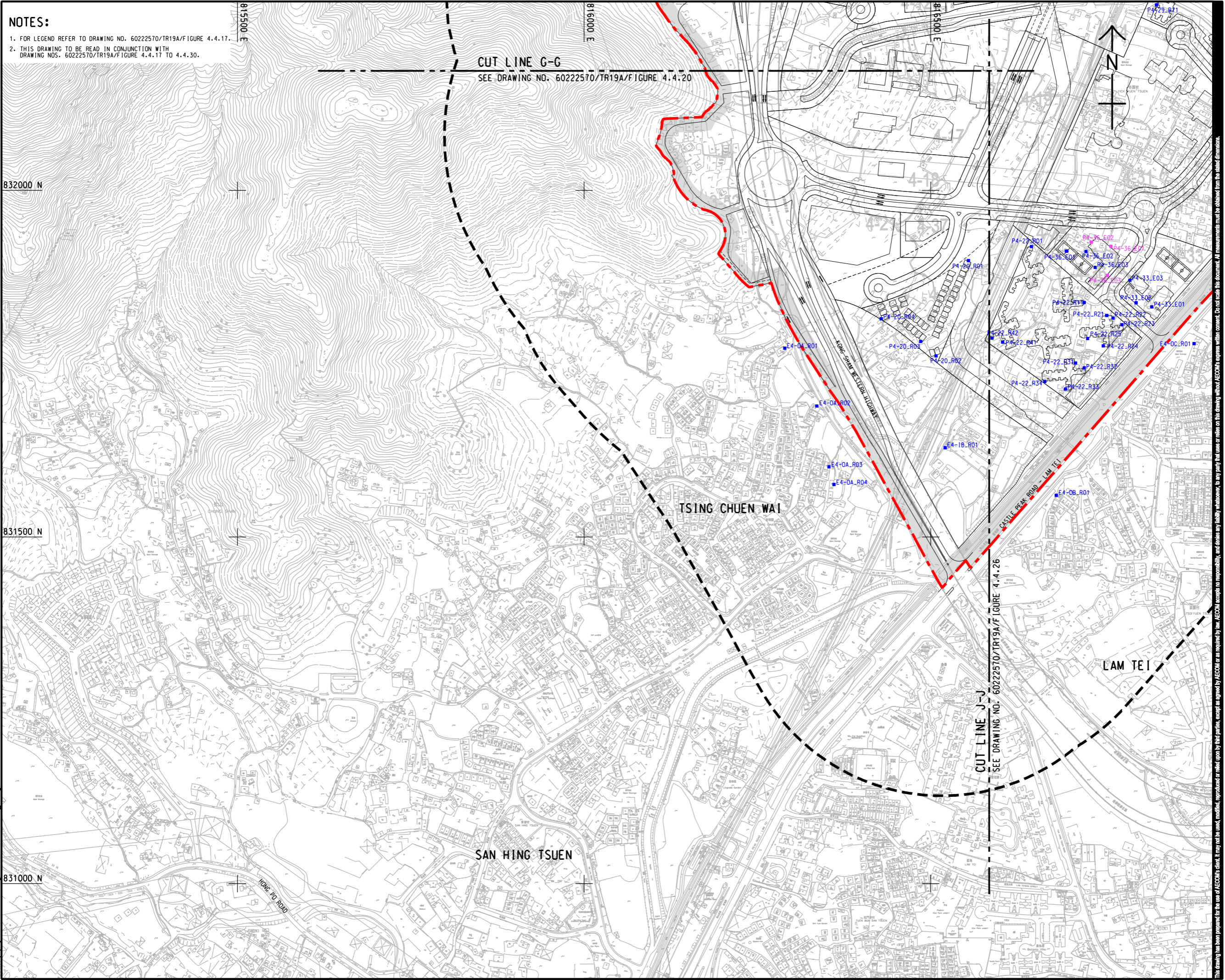


PROJECT NO.
 項目編號
 60222570
AGREEMENT NO.
 協議編號
 CE2/2011 (CE)

SHEET TITLE
 圖紙名稱
 LOCATIONS OF REPRESENTATIVE NOISE SENSITIVE RECEIVERS FOR ROAD TRAFFIC NOISE
 SHEET 4 OF 14
SHEET NUMBER
 圖紙編號
 60222570/TR19A/FIGURE 4.4.20

This drawing has been prepared for the use of AECOM's client. It may not be used, modified, reproduced or relied upon by third parties, except as agreed by AECOM in writing. AECOM accepts no responsibility, and denies any liability whatsoever, for any party that uses or relies on this drawing without AECOM's express written consent. Do not scale this document. All measurements must be obtained from the stated dimensions.

ISO A1 594mm x 841mm
 Approved:
 Checked:
 Designer:
 Project Management Initials:
 Pld File by: YANGYW
 PATH: E:\projects\60222570\Drawings\REPORT\TR19A\TR19A_741.dgn





NOTES:

1. FOR LEGEND REFER TO DRAWING NO. 60222570/TR19A/FIGURE 4.4.17.
2. THIS DRAWING TO BE READ IN CONJUNCTION WITH DRAWING NOS. 60222570/TR19A/FIGURE 4.4.17 TO 4.4.30.

CUT LINE G-G
SEE DRAWING NO. 60222570/TR19A/FIGURE 4.4.20

CUT LINE J-J
SEE DRAWING NO. 60222570/TR19A/FIGURE 4.4.26

AECOM
PROJECT
HUNG SHUI KIU NEW DEVELOPMENT AREA PLANNING AND ENGINEERING STUDY - INVESTIGATION

CLIENT
 
 土木工程拓展署 規劃署
 Civil Engineering and Development Department Planning Department

CONSULTANT

 AECOM Asia Company Ltd.
 www.aecom.com

SUB-CONSULTANTS
 分判工程顧問公司

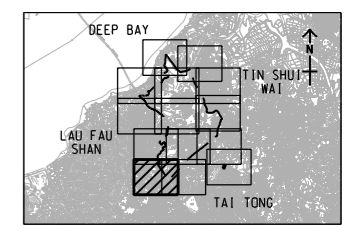
ISSUE/REVISION

IR	DATE	DESCRIPTION	CHK.

STATUS

SCALE 比例: A3 1:5000
DIMENSION UNIT 尺寸單位: METRES

KEY PLAN 索引圖: A3 1:30000



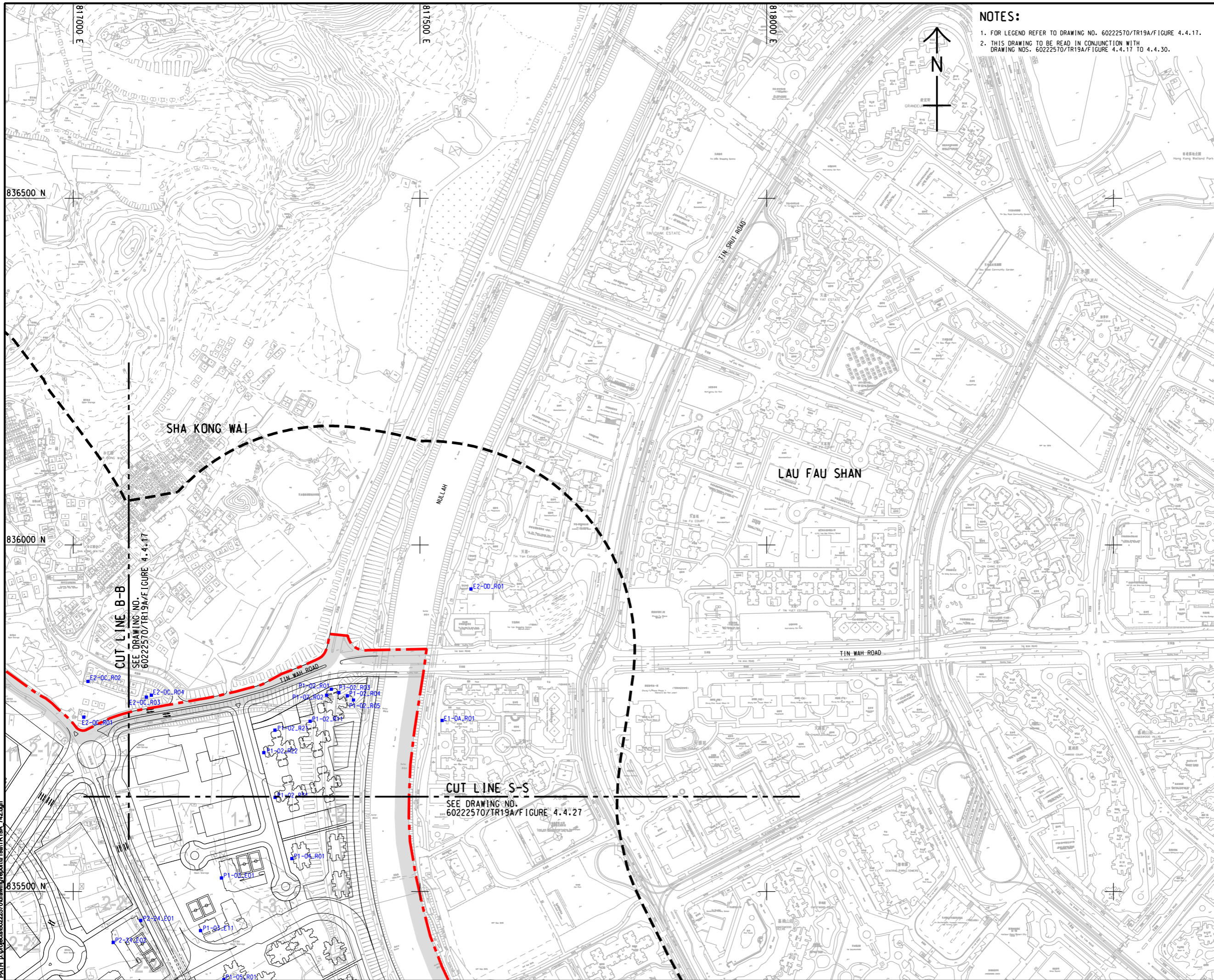
PROJECT NO. 項目編號: 60222570
AGREEMENT NO. 協議編號: CE2/2011 (CE)

SHEET TITLE 圖號: LOCATIONS OF REPRESENTATIVE NOISE SENSITIVE RECEIVERS FOR ROAD TRAFFIC NOISE
 SHEET 5 OF 14

SHEET NUMBER 圖號: 60222570/TR19A/FIGURE 4.4.21

This drawing has been prepared for the use of AECOM's client. It may not be used, modified, reproduced or relied upon by third parties, except as approved by AECOM or as required by law. AECOM accepts no responsibility, and disclaims any liability whatsoever, to any party, for losses or claims on this drawing without AECOM's express written consent. Do not scale this document. All measurements must be obtained from the stated dimensions.

ISO A1 594mm x 841mm
 Approved:
 Checked:
 Designer:
 Project Management Initials:
 Pld File by: ANH\60222570\drawing\center\Ga\TR19A_742.dgn
 PATH: E:\projects\60222570\drawing\center\Ga\TR19A_742.dgn



NOTES:

1. FOR LEGEND REFER TO DRAWING NO. 60222570/TR19A/FIGURE 4.4.17.
2. THIS DRAWING TO BE READ IN CONJUNCTION WITH DRAWING NOS. 60222570/TR19A/FIGURE 4.4.17 TO 4.4.30.

AECOM

PROJECT
 項目
HUNG SHUI KIU NEW DEVELOPMENT AREA PLANNING AND ENGINEERING STUDY - INVESTIGATION

CLIENT
 業主
CEDD
 土木工程拓展署
 Civil Engineering and Development Department

CONSULTANT
 工程顧問公司
AECOM Asia Company Ltd.
 www.aecom.com

SUB-CONSULTANTS
 分判工程顧問公司

ISSUE/REVISION
 修訂

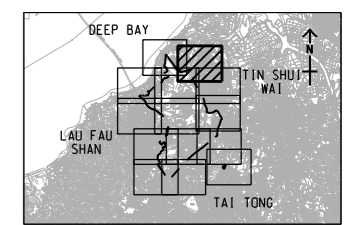
IR	DATE	DESCRIPTION	CHK

STATUS
 階段

SCALE
 比例
 A3 1:5000

DIMENSION UNIT
 尺寸單位
 METRES

KEY PLAN A3 1:30000



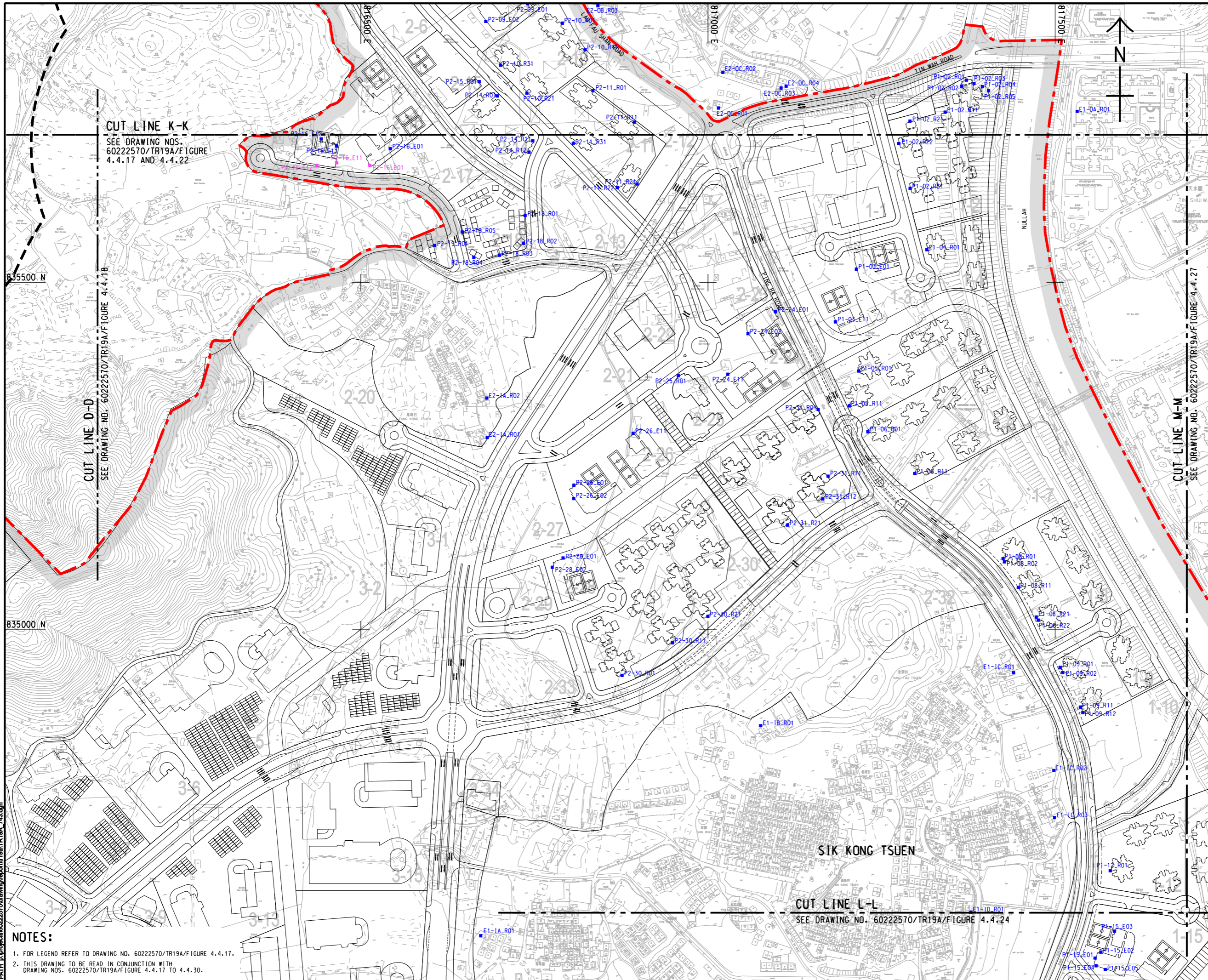
PROJECT NO.
 項目編號
 60222570

AGREEMENT NO.
 協議編號
 CE2/2011 (CE)

SHEET TITLE
 圖紙名稱
LOCATIONS OF REPRESENTATIVE NOISE SENSITIVE RECEIVERS FOR ROAD TRAFFIC NOISE

SHEET 6 OF 14

SHEET NUMBER
 圖紙編號
 60222570/TR19A/FIGURE 4.4.22



ISSUE/REVISION
 修訂

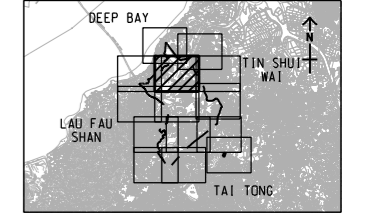
NO.	DATE	DESCRIPTION	CHK.

STATUS
 階段

SCALE
 比例

DIMENSION UNIT
 尺寸單位

A3 1 : 5000 METRES
 A3 1 : 300000



PROJECT NO.
 項目編號

AGREEMENT NO.
 協議編號

60222570 CE2/2011 (CE)

SHEET TITLE
 圖則名稱

LOCATIONS OF REPRESENTATIVE NOISE SENSITIVE RECEIVERS FOR ROAD TRAFFIC NOISE

SHEET 7 OF 14

SHEET NUMBER
 圖則編號

60222570/TR19A/FIGURE 4.4.23

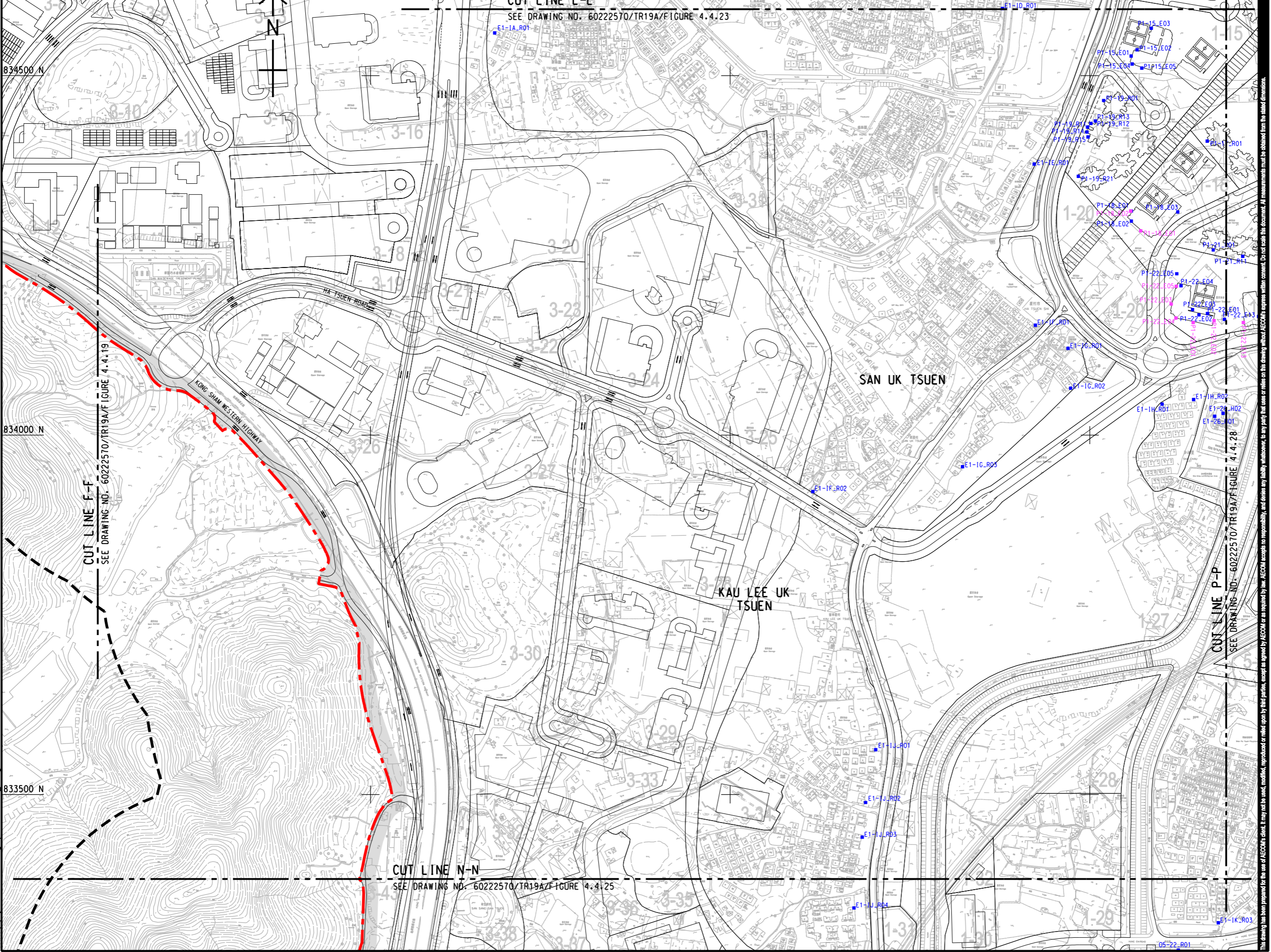
- NOTES:**
- FOR LEGEND REFER TO DRAWING NO. 60222570/TR19A/FIGURE 4.4.17.
 - THIS DRAWING TO BE READ IN CONJUNCTION WITH DRAWING NOS. 60222570/TR19A/FIGURE 4.4.17 TO 4.4.30.

This drawing has been prepared for the use of AECOM's client. It may not be used, modified, reproduced or relied upon by third parties, except as approved by AECOM or as required by law. AECOM accepts no responsibility, and denies any liability whatsoever, for any party that uses or relies on this drawing without AECOM's express written consent. Do not scale this document. All measurements must be obtained from the related dimensions.

ISO A1 594mm x 841mm
 Approved:
 Checked:
 Designer:
 Project Management Initials:
 Pld File by: ANH\60222570\drawing\center\0a\TR19A_744.dgn

NOTES:

- FOR LEGEND REFER TO DRAWING NO. 60222570/TR19A/FIGURE 4.4.17.
- THIS DRAWING TO BE READ IN CONJUNCTION WITH DRAWING NOS. 60222570/TR19A/FIGURE 4.4.17 TO 4.4.30.



AECOM

PROJECT
 HUNG SHUI KIU NEW DEVELOPMENT AREA PLANNING AND ENGINEERING STUDY - INVESTIGATION

CLIENT
 CEDD
 土木工程拓展署
 Civil Engineering and Development Department

CONSULTANT
 AECOM Asia Company Ltd.
 www.aecom.com

SUB-CONSULTANTS
 分判工程顧問公司

ISSUE/REVISION

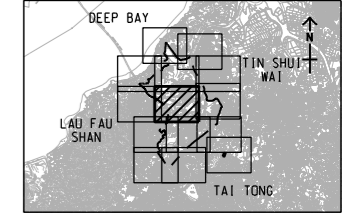
NO.	DATE	DESCRIPTION	CHK.

STATUS
 現狀

SCALE
 比例: A3 1:5000

DIMENSION UNIT
 尺寸單位: METRES

KEY PLAN
 索引圖: A3 1:30000



PROJECT NO.
 項目編號: 60222570

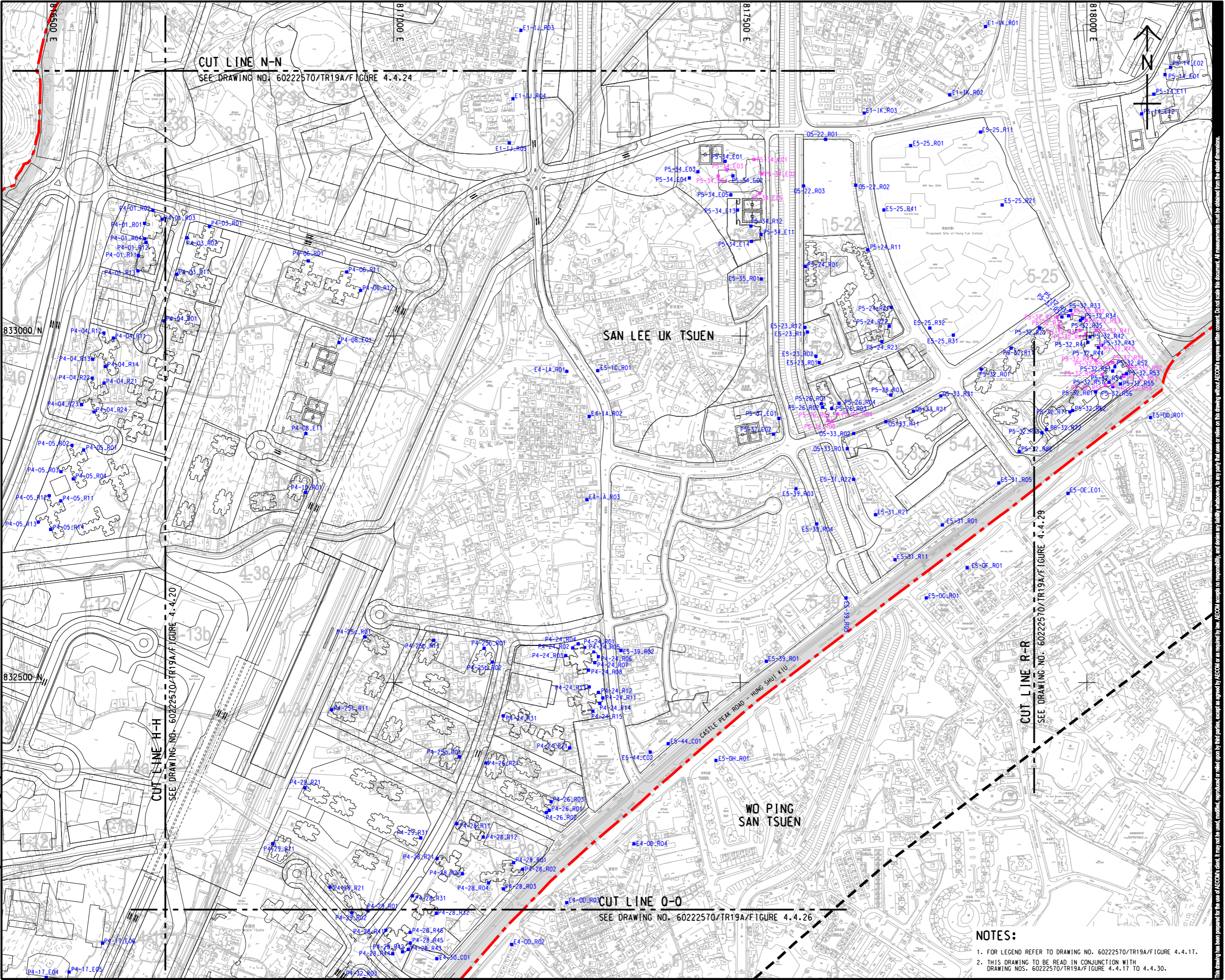
AGREEMENT NO.
 協議編號: CE2/2011 (CE)

SHEET TITLE
 圖紙名稱: LOCATIONS OF REPRESENTATIVE NOISE SENSITIVE RECEIVERS FOR ROAD TRAFFIC NOISE

SHEET NUMBER
 圖紙編號: SHEET 8 OF 14
 60222570/TR19A/FIGURE 4.4.24

This drawing has been prepared for the use of AECOM's client. It may not be used, modified, reproduced or relied upon by third parties, except as agreed by AECOM or as required by law. AECOM accepts no responsibility, and denies any liability whatsoever, for any party that uses or relies on this drawing without AECOM's express written consent. Do not scale this document. All measurements must be obtained from the related dimensions.

ISO A1 594mm x 841mm
 Approved:
 Checked:
 Designer:
 Project Management Initials:
 Pld File by: ZENGXF
 PATH: P:\PROJECTS\60222570\DRAWING\REPORT\TR19A\TR19A_745.dgn



AECOM

PROJECT
 HUNG SHUI KIU NEW DEVELOPMENT AREA PLANNING AND ENGINEERING STUDY - INVESTIGATION

CLIENT
 CEDD
 土木工程拓展署
 Civil Engineering and Development Department
 規劃署
 Planning Department

CONSULTANT
 AECOM Asia Company Ltd.
 www.aecom.com

SUB-CONSULTANTS
 分判工程顧問公司

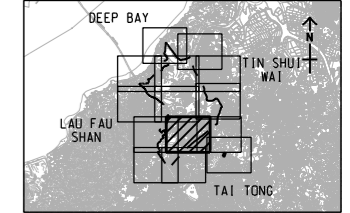
ISSUE/REVISION

NO.	DATE	DESCRIPTION	CHK.

STATUS
 現狀

SCALE
 比例
 A3 1:5000
 A3 1:30000

DIMENSION UNIT
 尺寸單位
 METRES



PROJECT NO.
 項目編號
 60222570

AGREEMENT NO.
 協議編號
 CE2/2011 (CE)

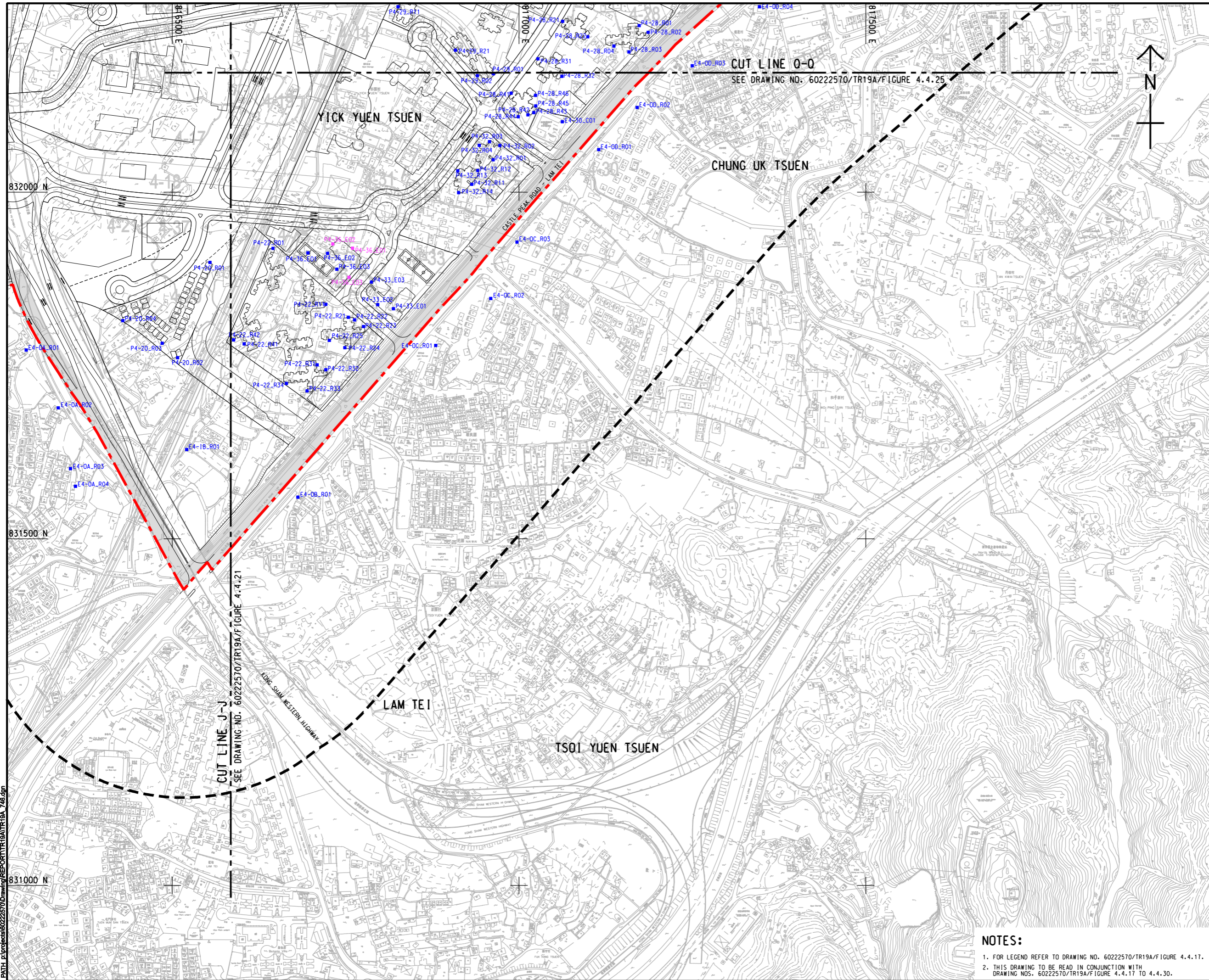
SHEET TITLE
 圖名
 LOCATIONS OF REPRESENTATIVE NOISE SENSITIVE RECEIVERS FOR ROAD TRAFFIC NOISE

SHEET NUMBER
 圖號
 SHEET 9 OF 14
 60222570/TR19A/FIGURE 4.4.25

- NOTES:**
- FOR LEGEND REFER TO DRAWING NO. 60222570/TR19A/FIGURE 4.4.17.
 - THIS DRAWING TO BE READ IN CONJUNCTION WITH DRAWING NOS. 60222570/TR19A/FIGURE 4.4.17 TO 4.4.30.



This drawing has been prepared for the use of AECOM's client. It may not be used, modified, reproduced or relied upon by third parties, except as required by law. AECOM accepts no responsibility, and does not warrant, for any party that uses or relies on this drawing without AECOM's express written consent. Do not scale this document. All measurements must be obtained from the stated dimensions.

ISO A1 594mm x 841mm
Approved:
Checked:
Designer:
Project Management Initials:
Pld File by: YANGYU
PATH: E:\projects\60222570\Drawings\REPORT\TR19A\TR19A_746.dgn



AECOM

PROJECT
HUNG SHUI KIU NEW DEVELOPMENT AREA PLANNING AND ENGINEERING STUDY - INVESTIGATION

CLIENT
 
 土木工程拓展署 規劃署
 Civil Engineering and Development Department Planning Department

CONSULTANT
 工程顧問公司
 AECOM Asia Company Ltd.
 www.aecom.com

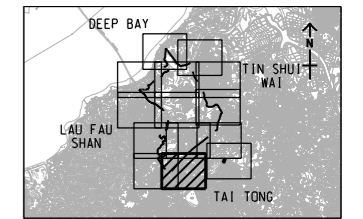
SUB-CONSULTANTS
 分判工程顧問公司

ISSUE/REVISION
 修訂

IR	DATE	DESCRIPTION	CHK
修訂	日期	內容摘要	核對

STATUS
 階段

SCALE 比例: A3 1:5000
DIMENSION UNIT 尺寸單位: METRES



PROJECT NO. 項目編號: 60222570
AGREEMENT NO. 協議編號: CE2/2011 (CE)

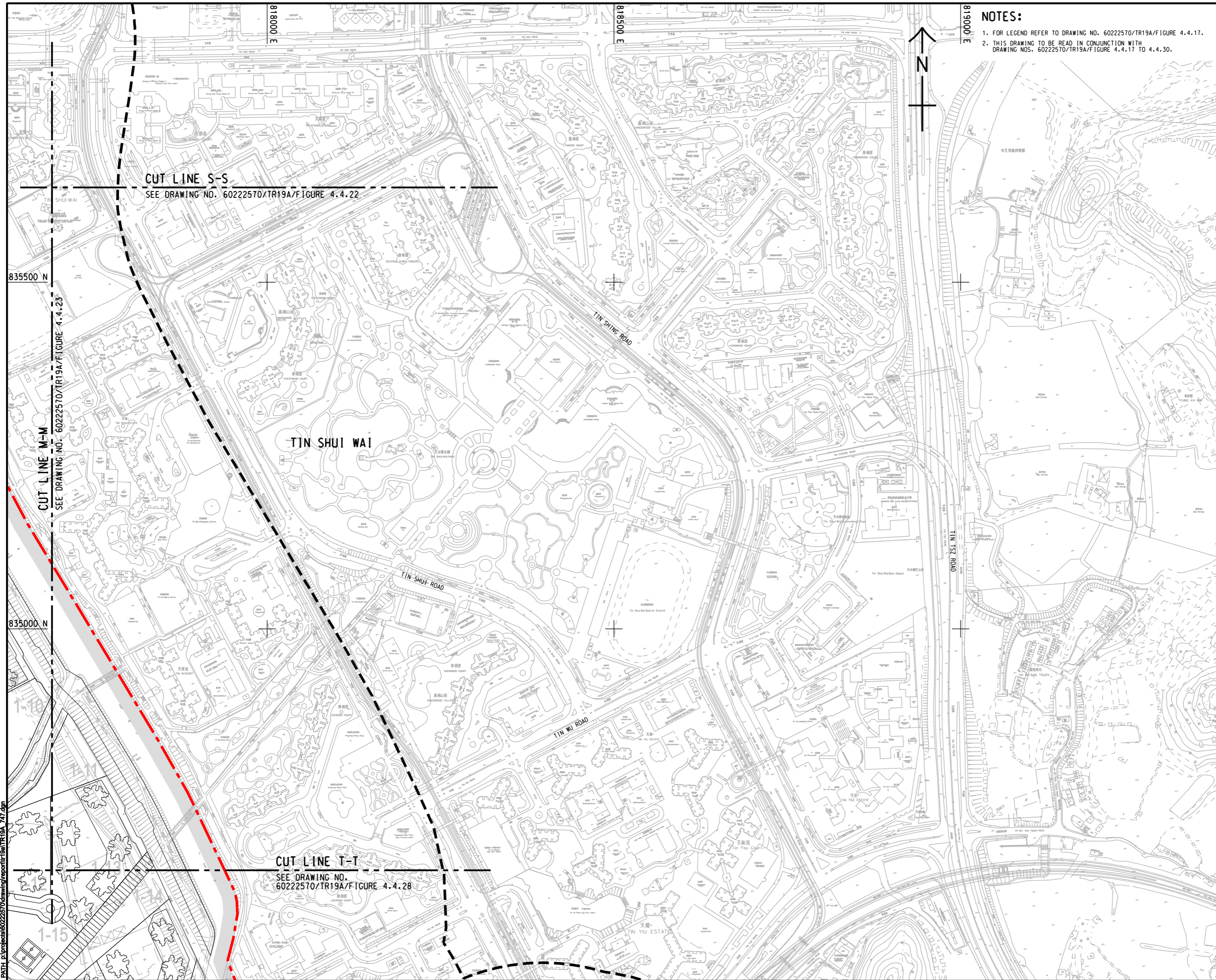
SHEET TITLE 圖號: LOCATIONS OF REPRESENTATIVE NOISE SENSITIVE RECEIVERS FOR ROAD TRAFFIC NOISE
 SHEET 10 OF 14

SHEET NUMBER 圖號: 60222570/TR19A/FIGURE 4.4.26

- NOTES:**
- FOR LEGEND REFER TO DRAWING NO. 60222570/TR19A/FIGURE 4.4.17.
 - THIS DRAWING TO BE READ IN CONJUNCTION WITH DRAWING NOS. 60222570/TR19A/FIGURE 4.4.17 TO 4.4.30.

This drawing has been prepared for the use of AECOM's client. It may not be used, modified, reproduced or relied upon by third parties, except as required by AECOM or as required by law. AECOM accepts no responsibility, and denies any liability whatsoever, for any party that uses or relies on this drawing without AECOM's express written consent. Do not scale this document. All measurements must be obtained from the stated dimensions.

ISO A1 594mm x 841mm
Approved:
Checked:
Designer:
Project Management Initials:
Pld File by: ANH\60222570\drawing\center\0a\TR19A_747.dgn



NOTES:

1. FOR LEGEND REFER TO DRAWING NO. 60222570/TR19A/FIGURE 4.4.17.
2. THIS DRAWING TO BE READ IN CONJUNCTION WITH DRAWING NOS. 60222570/TR19A/FIGURE 4.4.17 TO 4.4.30.



PROJECT
項目
HUNG SHUI KIU NEW DEVELOPMENT AREA PLANNING AND ENGINEERING STUDY - INVESTIGATION

CLIENT
業主
CEDD
土木工程拓展署
Civil Engineering and Development Department
規劃署
Planning Department

CONSULTANT
工程顧問公司
AECOM Asia Company Ltd.
www.aecom.com

SUB-CONSULTANTS
分判工程顧問公司

ISSUE/REVISION
修訂

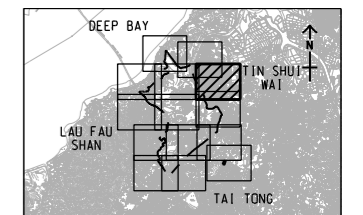
IR	DATE	DESCRIPTION	CHK.
修訂	日期	內容摘要	核對

STATUS
階段

SCALE
比例

A3 1 : 5000 METRES

KEY PLAN
索引圖



PROJECT NO.
項目編號

60222570

AGREEMENT NO.
協議編號

CE2/2011 (CE)

SHEET TITLE
圖紙名稱

LOCATIONS OF REPRESENTATIVE NOISE SENSITIVE RECEIVERS FOR ROAD TRAFFIC NOISE

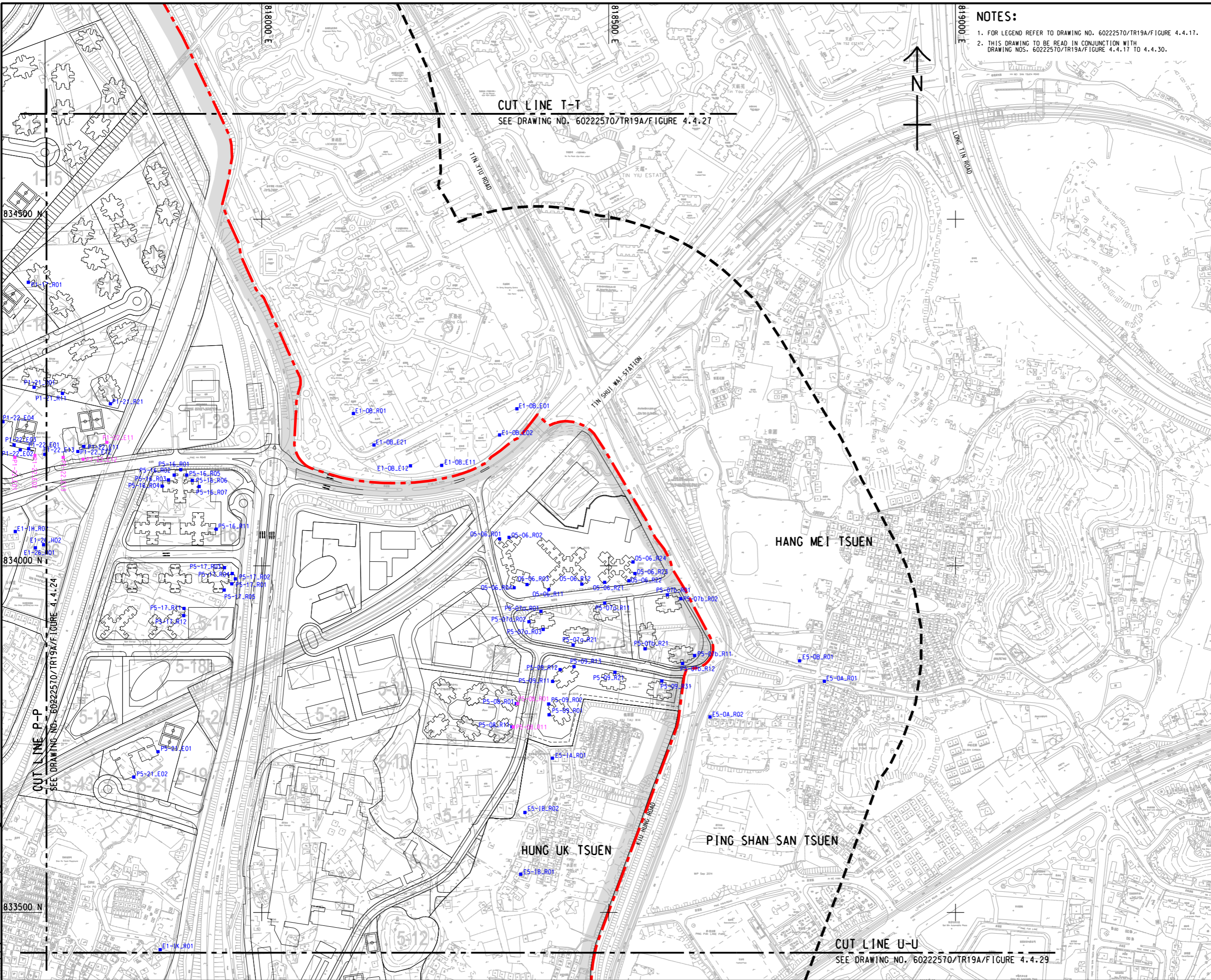
SHEET 11 OF 14

SHEET NUMBER
圖紙編號

60222570/TR19A/FIGURE 4.4.27

This drawing has been prepared for the use of AECOM's client. It may not be used, modified, reproduced or relied upon by third parties, except as agreed by AECOM or as required by law. AECOM accepts no responsibility, and denies any liability whatsoever, to any party, for loss or damage of any kind, arising from the use of this drawing without AECOM's express written consent. Do not scale this document. All measurements must be obtained from the stated dimensions.

ISO A1 594mm x 841mm
 Approved:
 Checked:
 Designer:
 Project Management Initials:
 Pld File by: ANH\60222570\drawing\center\Ga\TR19A_748.dgn
 PATH: P:\projects\60222570\drawing\center\Ga\TR19A_748.dgn



NOTES:

1. FOR LEGEND REFER TO DRAWING NO. 60222570/TR19A/FIGURE 4.4.17.
2. THIS DRAWING TO BE READ IN CONJUNCTION WITH DRAWING NOS. 60222570/TR19A/FIGURE 4.4.17 TO 4.4.30.

CUT LINE T-T
 SEE DRAWING NO. 60222570/TR19A/FIGURE 4.4.27

CUT LINE P-P
 SEE DRAWING NO. 60222570/TR19A/FIGURE 4.4.24

CUT LINE U-U
 SEE DRAWING NO. 60222570/TR19A/FIGURE 4.4.29

AECOM

PROJECT
 HUNG SHUI KIU NEW DEVELOPMENT AREA PLANNING AND ENGINEERING STUDY - INVESTIGATION

CLIENT
 CEDD
 土木工程拓展署
 Civil Engineering and Development Department

CONSULTANT
 AECOM Asia Company Ltd.
 www.aecom.com

SUB-CONSULTANTS
 分判工程顧問公司

ISSUE/REVISION

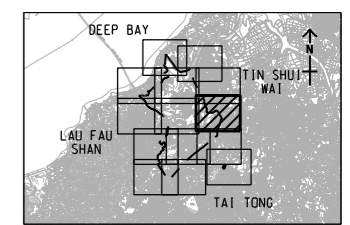
NO.	DATE	DESCRIPTION	CHK.

STATUS
 現狀

SCALE
 比例: A3 1:5000

DIMENSION UNIT
 尺寸單位: METRES

KEY PLAN A3 1:30000



PROJECT NO.
 項目編號: 60222570

AGREEMENT NO.
 協議編號: CE2/2011 (CE)

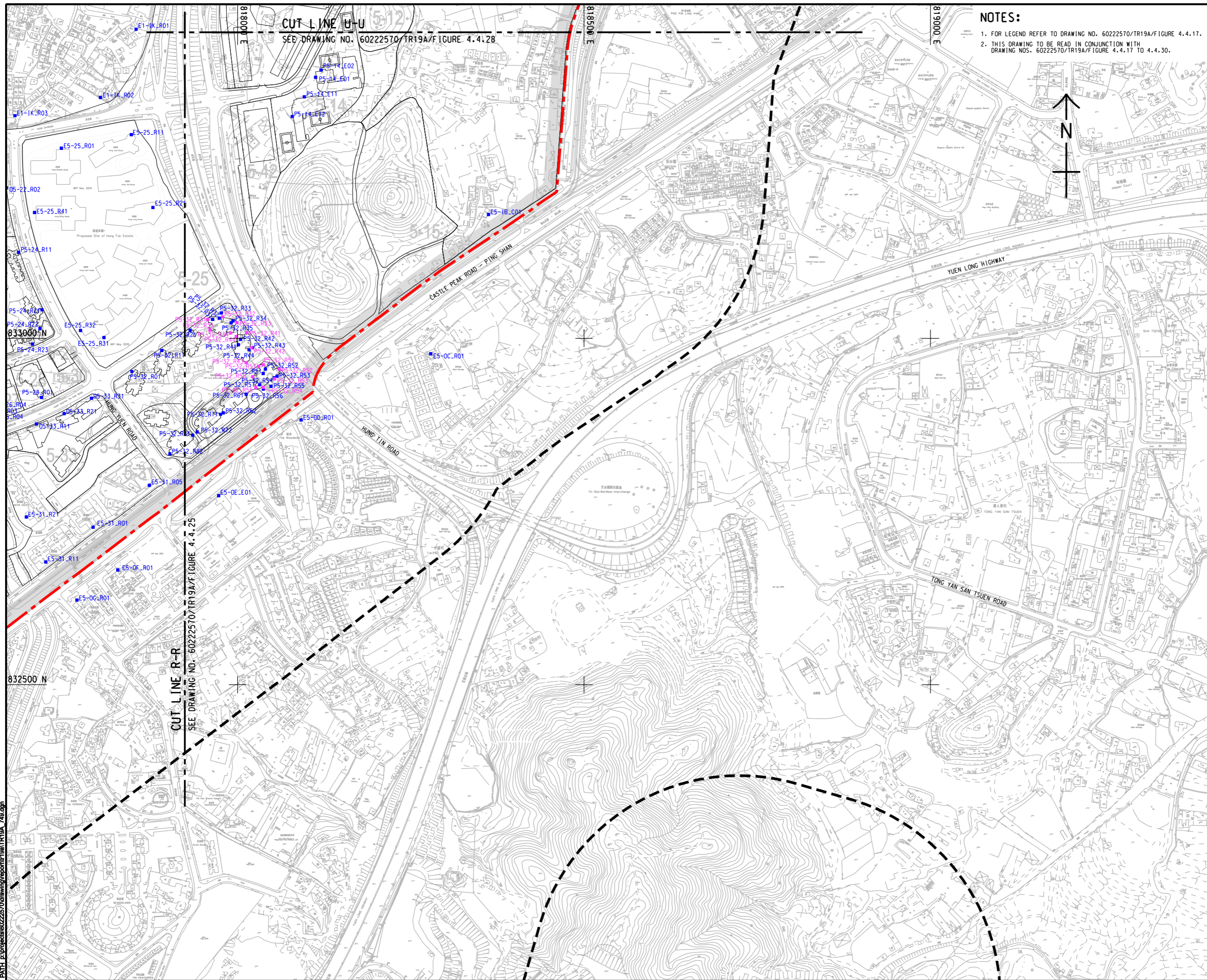
SHEET TITLE
 圖紙名稱: LOCATIONS OF REPRESENTATIVE NOISE SENSITIVE RECEIVERS FOR ROAD TRAFFIC NOISE

SHEET NUMBER
 圖紙編號: SHEET 12 OF 14

60222570/TR19A/FIGURE 4.4.28

This drawing has been prepared for the use of AECOM's client. It may not be used, modified, reproduced or relied upon by third parties, except as required by law. AECOM accepts no responsibility, and disclaims any liability whatsoever, for any party that uses or relies on this drawing without AECOM's express written consent. All measurements must be obtained from the stated dimensions.

ISO A1 594mm x 841mm
Approved:
Checked:
Designer:
Project Management Initials:
Pld File by: ANH
PATH: E:\projects\60222570\drawing\paper\ca\TR19A_749.dgn



NOTES:

1. FOR LEGEND REFER TO DRAWING NO. 60222570/TR19A/FIGURE 4.4.17.
2. THIS DRAWING TO BE READ IN CONJUNCTION WITH DRAWING NOS. 60222570/TR19A/FIGURE 4.4.17 TO 4.4.30.



PROJECT
項目
HUNG SHUI KIU NEW DEVELOPMENT AREA PLANNING AND ENGINEERING STUDY - INVESTIGATION

CLIENT
業主
CEDD
土木工程拓展署
Civil Engineering and Development Department
規劃署
Planning Department

CONSULTANT
工程顧問公司
AECOM Asia Company Ltd.
www.aecom.com

SUB-CONSULTANTS
分判工程顧問公司

ISSUE/REVISION
修訂

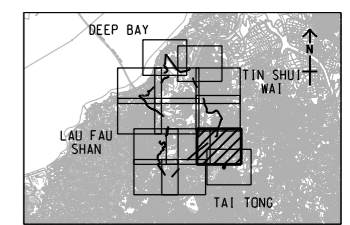
IR	DATE	DESCRIPTION	CHK.
修訂	日期	內容摘要	核實

STATUS
階段

SCALE
比例

A3 1 : 5000 METRES

KEY PLAN
索引圖



PROJECT NO.
項目編號

60222570

AGREEMENT NO.
協議編號

CE2/2011 (CE)

SHEET TITLE
圖紙名稱

LOCATIONS OF REPRESENTATIVE NOISE SENSITIVE RECEIVERS FOR ROAD TRAFFIC NOISE

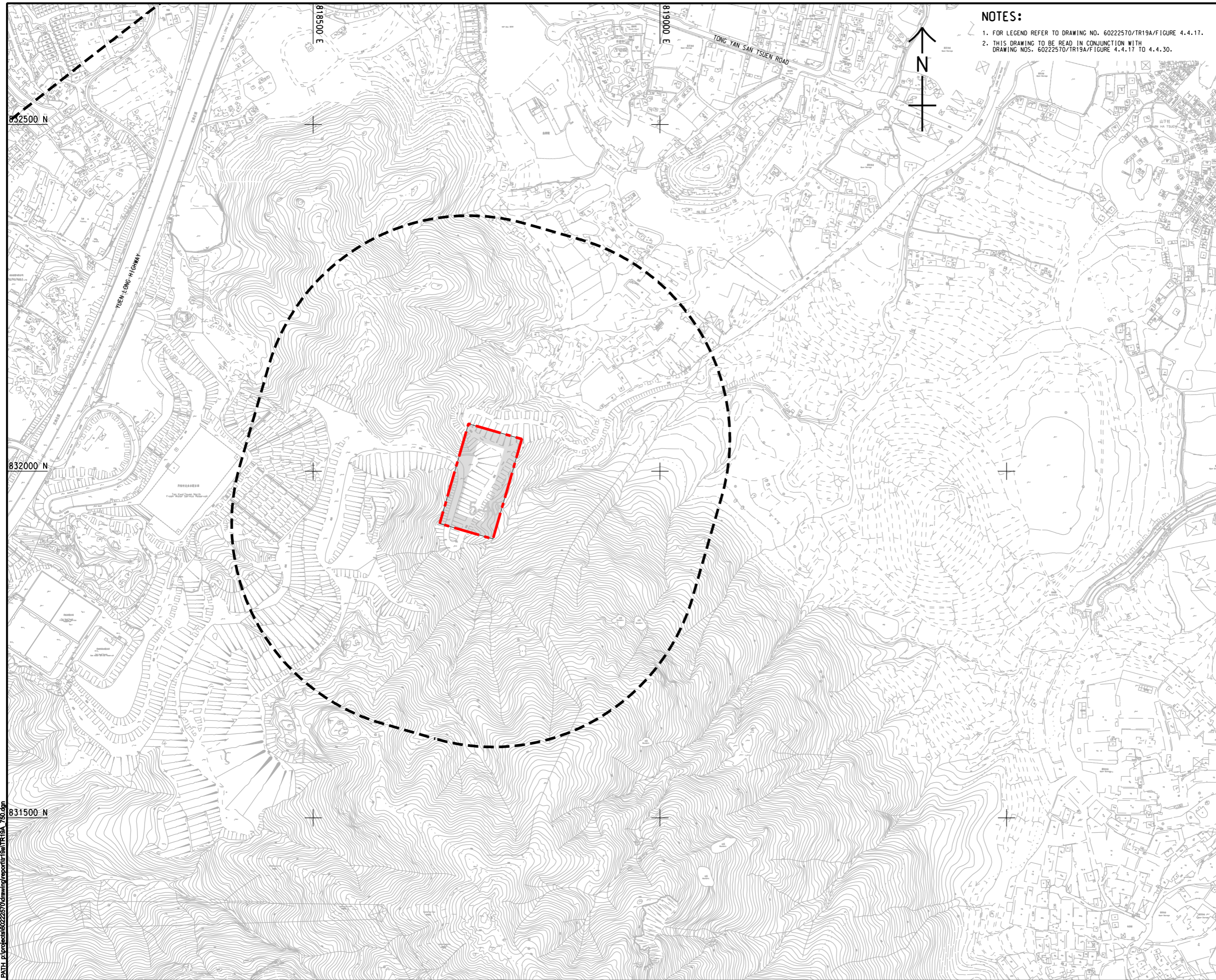
SHEET 13 OF 14

SHEET NUMBER
圖紙編號

60222570/TR19A/FIGURE 4.4.29

This drawing has been prepared for the use of AECOM's client. It may not be used, modified, reproduced or relied upon by third parties, except as approved by AECOM or as required by law. AECOM accepts no responsibility, and denies any liability whatsoever, to any party that uses or relies on this drawing without AECOM's express written consent. Do not scale this document. All measurements must be obtained from the related dimensions.

ISO A1 594mm x 841mm
 Approved:
 Checked:
 Designer:
 Project Management Initials:



NOTES:

1. FOR LEGEND REFER TO DRAWING NO. 60222570/TR19A/FIGURE 4.4.17.
2. THIS DRAWING TO BE READ IN CONJUNCTION WITH DRAWING NOS. 60222570/TR19A/FIGURE 4.4.17 TO 4.4.30.

AECOM

PROJECT
 項目
HUNG SHUI KIU NEW DEVELOPMENT AREA PLANNING AND ENGINEERING STUDY - INVESTIGATION

CLIENT
 業主



 土木工程拓展署
 Civil Engineering and Development Department
 規劃署
 Planning Department

CONSULTANT
 工程顧問公司
 AECOM Asia Company Ltd.
 www.aecom.com

SUB-CONSULTANTS
 分判工程顧問公司

ISSUE/REVISION
 修訂

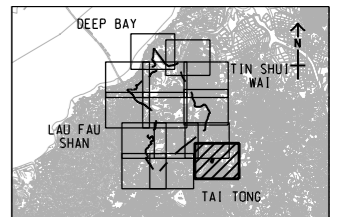
IR	DATE	DESCRIPTION	CHK.
修訂	日期	內容摘要	核對

STATUS
 階段

SCALE **DIMENSION UNIT**
 比例 尺寸單位

A3 1 : 5000 METRES

KEY PLAN A3 1 : 300000



PROJECT NO. **AGREEMENT NO.**
 項目編號 協議編號

60222570 CE2/2011 (CE)

SHEET TITLE
 圖紙名稱

LOCATIONS OF REPRESENTATIVE NOISE SENSITIVE RECEIVERS FOR ROAD TRAFFIC NOISE

SHEET 14 OF 14

SHEET NUMBER
 圖紙編號

60222570/TR19A/FIGURE 4.4.30

Pld File by: ANHLE\60222570\drawing\pcenter\0a1\TR19A_750.dgn
 PATH: E:\projects\60222570\drawing\pcenter\0a1\TR19A_750.dgn

This drawing has been prepared for the use of AECOM's client. It may not be used, modified, reproduced or relied upon by third parties, except as agreed by AECOM or as required by law. AECOM accepts no responsibility, and denies any liability whatsoever, to any party, for uses or reliance on this drawing without AECOM's express written consent. Do not scale this document. All measurements must be obtained from the stated dimensions.