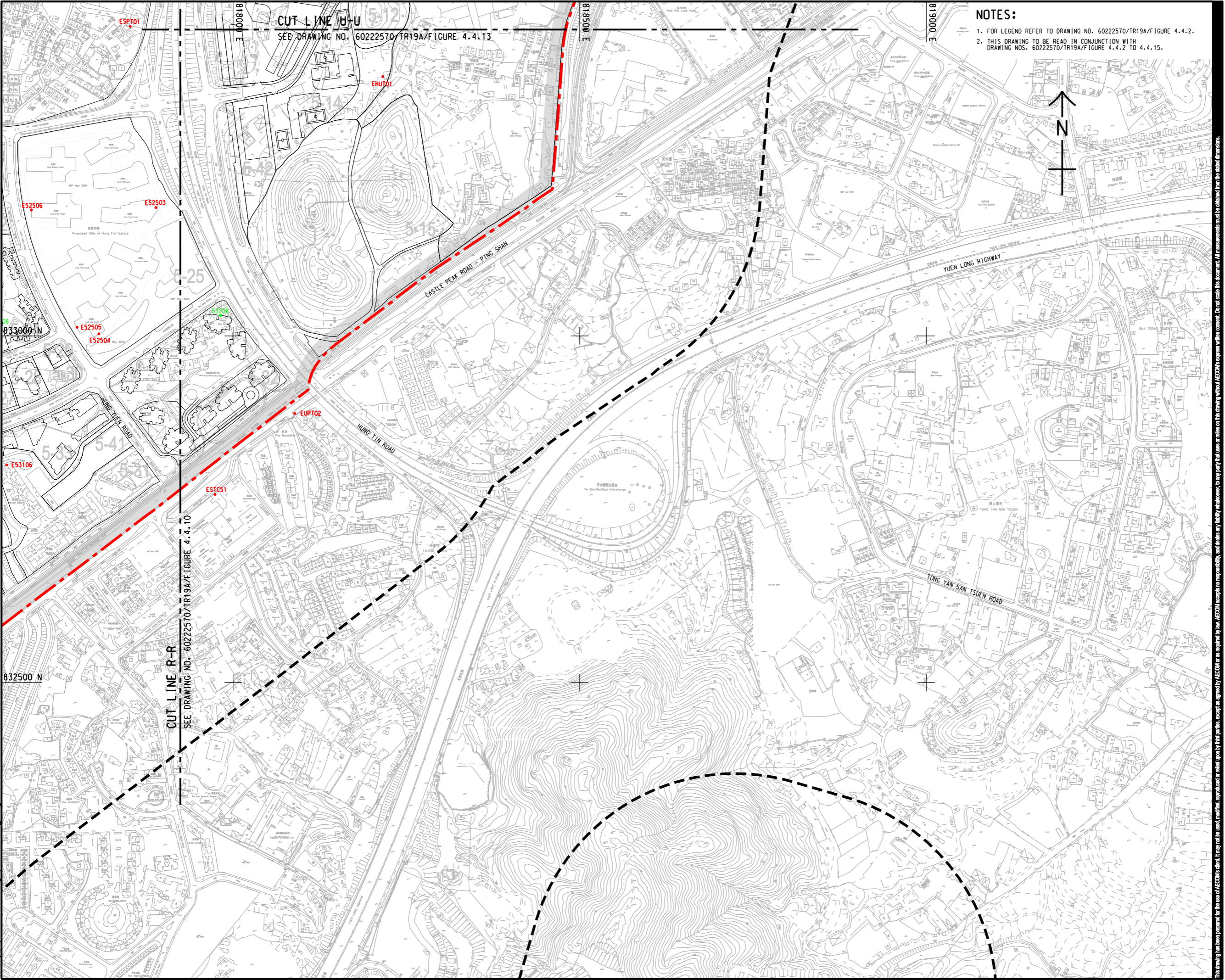


Pld File by: ZENGFY
 PATH: P:\projects\60222570\drawing\paper\ca\TR19A_483.dgn



NOTES:
 1. FOR LEGEND REFER TO DRAWING NO. 60222570/TR19A/FIGURE 4.4.2.
 2. THIS DRAWING TO BE READ IN CONJUNCTION WITH DRAWING NOS. 60222570/TR19A/FIGURE 4.4.2 TO 4.4.15.

AECOM

PROJECT
 HUNG SHUI KIU NEW DEVELOPMENT AREA PLANNING AND ENGINEERING STUDY - INVESTIGATION

CLIENT
 CEDD
 土木工程拓展署
 Civil Engineering and Development Department

CONSULTANT
 AECOM Asia Company Ltd.
 www.aecom.com

SUB-CONSULTANTS
 分判工程顧問公司

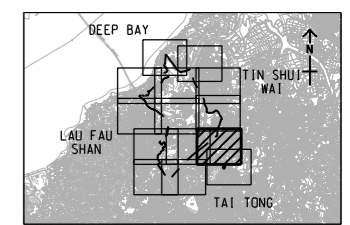
ISSUE/REVISION

NO.	DATE	DESCRIPTION	CHK.

STATUS
 狀態

SCALE
 比例尺: A3 1:5000

DIMENSION UNIT
 尺寸單位: METRES



PROJECT NO.
 項目編號: 60222570

AGREEMENT NO.
 協議編號: CE2/2011 (CE)

SHEET TITLE
 圖紙名稱: LOCATIONS OF REPRESENTATIVE NOISE SENSITIVE RECEIVERS FOR CONSTRUCTION NOISE

SHEET NUMBER
 圖紙編號: 60222570/TR19A/FIGURE 4.4.14

SHEET 13 OF 14