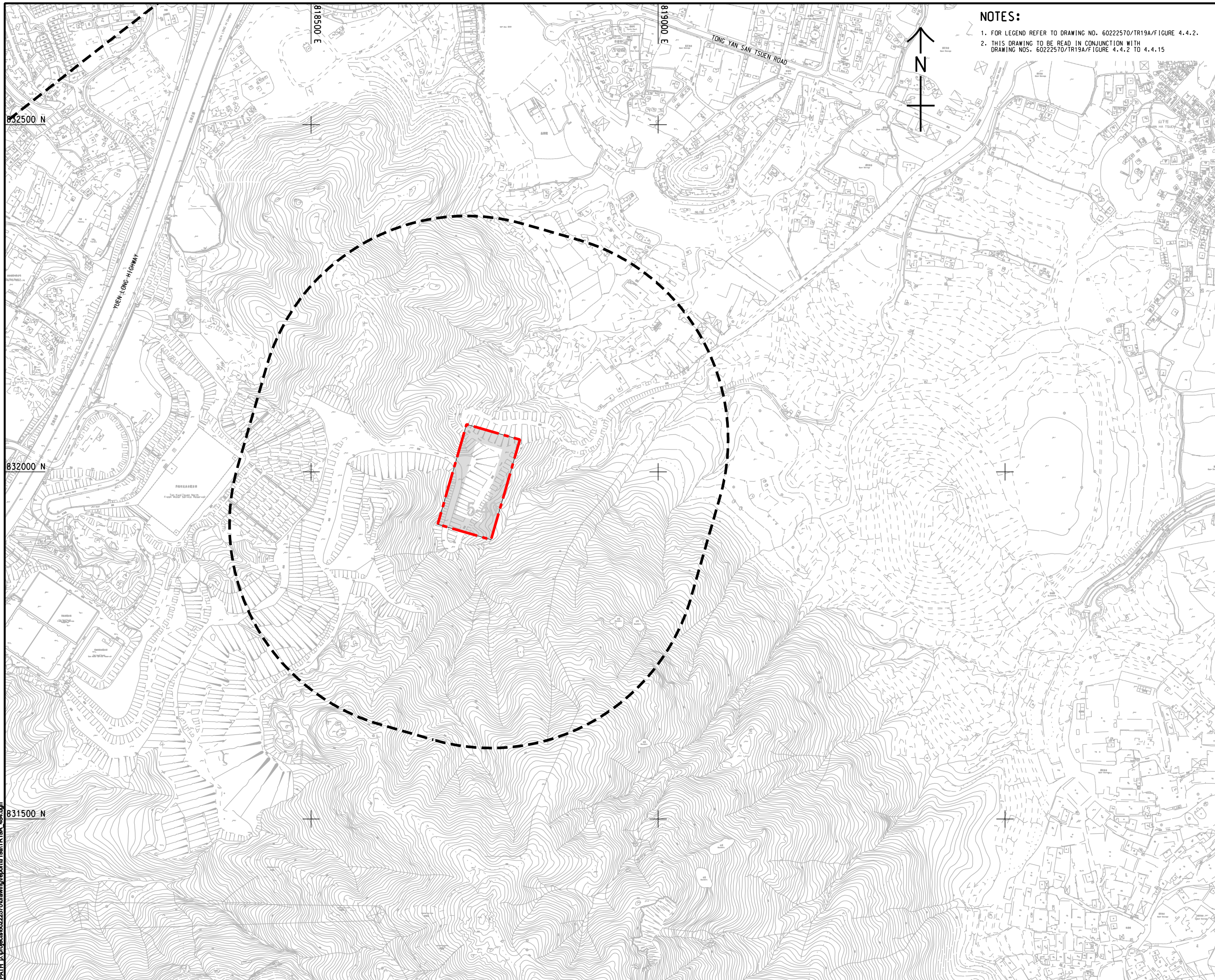


ISO A1 594mm x 841mm
 Approved:
 Checked:
 Designer:
 Project Management Initials:

Pld File by: ZENGFY
 PATH: E:\projects\60222570\drawing\center\0a1\TR19A_48.dgn



NOTES:

1. FOR LEGEND REFER TO DRAWING NO. 60222570/TR19A/FIGURE 4.4.2.
2. THIS DRAWING TO BE READ IN CONJUNCTION WITH DRAWING NOS. 60222570/TR19A/FIGURE 4.4.2 TO 4.4.15



AECOM

PROJECT
 項目

HUNG SHUI KIU NEW DEVELOPMENT AREA PLANNING AND ENGINEERING STUDY - INVESTIGATION

CLIENT
 業主



CONSULTANT
 工程顧問公司
 AECOM Asia Company Ltd.
 www.aecom.com

SUB-CONSULTANTS
 分判工程顧問公司

ISSUE/REVISION
 修訂

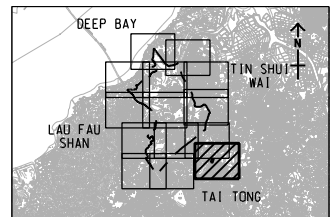
IR 修訂	DATE 日期	DESCRIPTION 內容摘要	CHK. 核對

STATUS
 階段

SCALE **DIMENSION UNIT**
 比例 尺寸單位

A3 1 : 5000 METRES

KEY PLAN A3 1 : 300000



PROJECT NO. **AGREEMENT NO.**
 項目編號 協議編號

60222570 CE2/2011 (CE)

SHEET TITLE
 圖紙名稱

LOCATIONS OF REPRESENTATIVE NOISE SENSITIVE RECEIVERS FOR CONSTRUCTION NOISE

SHEET 14 OF 14

SHEET NUMBER
 圖紙編號

60222570/TR19A/FIGURE 4.4.15

This drawing has been prepared for the use of AECOM's client. It may not be used, modified, reproduced or relied upon by third parties, except as approved by AECOM or as required by law. AECOM accepts no responsibility, and denies any liability whatsoever, to any party, for uses or reliance on this drawing without AECOM's express written consent. Do not scale this document. All measurements must be obtained from the stated dimensions.