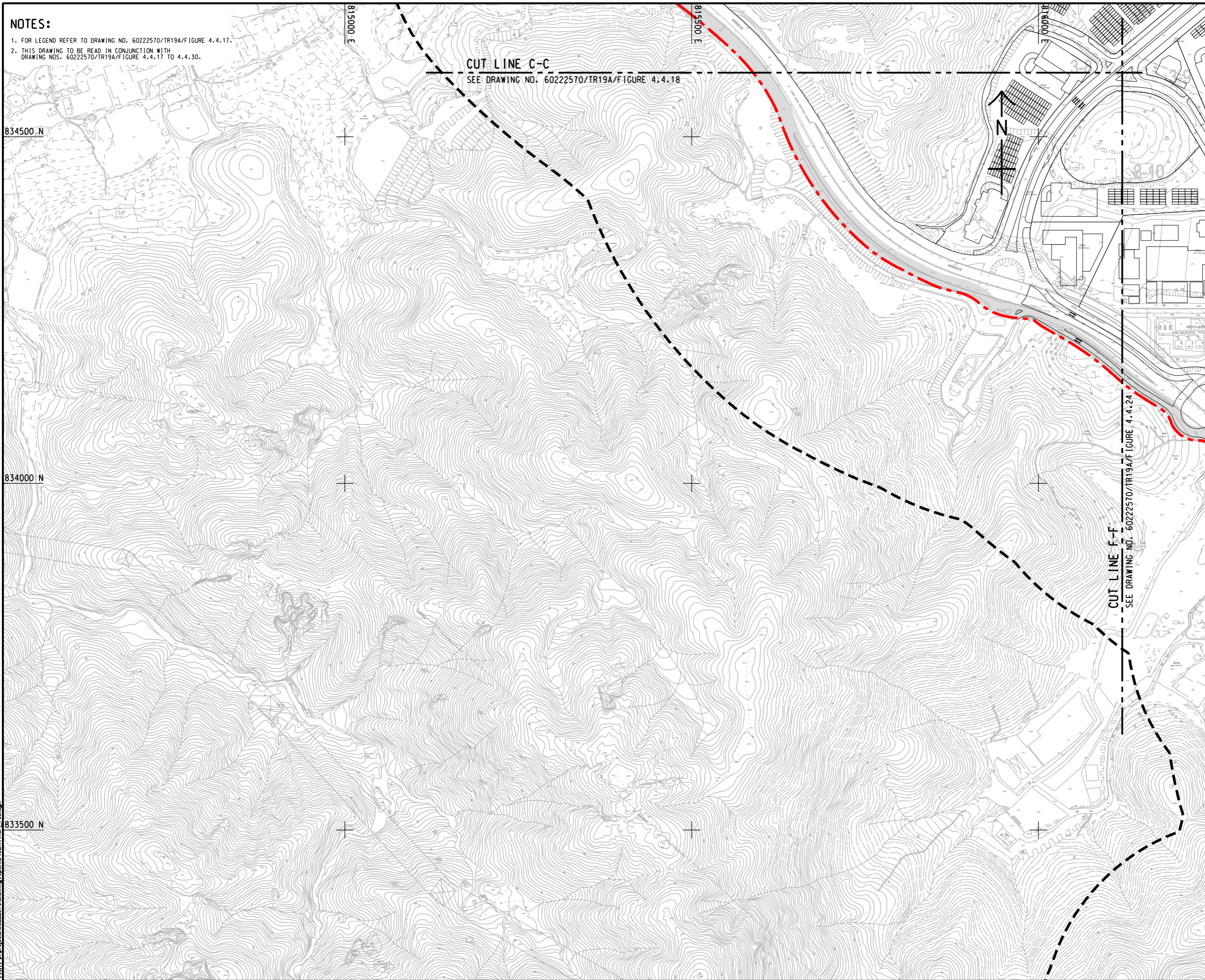


ISO A1 594mm x 841mm
Approved:
Checked:
Designer:
Project Management Initials:
Pld File by: ANHLE\60222570\drawing\pcenter\0a1\TR19A_738.dgn

NOTES:
 1. FOR LEGEND REFER TO DRAWING NO. 60222570/TR19A/FIGURE 4.4.17.
 2. THIS DRAWING TO BE READ IN CONJUNCTION WITH DRAWING NOS. 60222570/TR19A/FIGURE 4.4.17 TO 4.4.30.



CUT LINE C-C
 SEE DRAWING NO. 60222570/TR19A/FIGURE 4.4.18

CUT LINE F-F
 SEE DRAWING NO. 60222570/TR19A/FIGURE 4.4.24

This drawing has been prepared for the use of AECOM's client. It may not be used, modified, reproduced or relied upon by third parties, except as agreed by AECOM or as required by law. AECOM accepts no responsibility, and denies any liability whatsoever, to any party, for uses or reliance on this drawing without AECOM's express written consent. Do not scale this document. All measurements must be obtained from the stated dimensions.

AECOM

PROJECT
 項目
HUNG SHUI KIU NEW DEVELOPMENT AREA PLANNING AND ENGINEERING STUDY - INVESTIGATION

CLIENT
 業主


 土木工程拓展署
 Civil Engineering and Development Department


 規劃署
 Planning Department

CONSULTANT
 工程顧問公司
 AECOM Asia Company Ltd.
 www.aecom.com

SUB-CONSULTANTS
 分判工程顧問公司

ISSUE/REVISION
 修訂

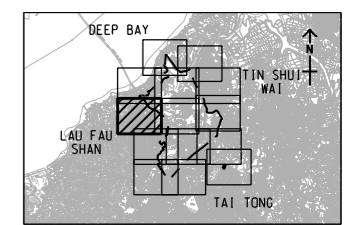
NO.	DATE	DESCRIPTION	CHK.

STATUS
 階段

SCALE
 比例
 A3 1 : 5000

DIMENSION UNIT
 尺寸單位
 METRES

KEY PLAN A3 1 : 30000
 索引圖



PROJECT NO.
 項目編號
 60222570

AGREEMENT NO.
 協議編號
 CE2/2011 (CE)

SHEET TITLE
 圖紙名稱
 LOCATIONS OF REPRESENTATIVE NOISE SENSITIVE RECEIVERS FOR ROAD TRAFFIC NOISE

SHEET 3 OF 14

SHEET NUMBER
 圖紙編號
 60222570/TR19A/FIGURE 4.4.19