

Pld File by: YANGYUW
 PATH: F:\project\60222570\Drawing\REPORT\TR19A\TR19A_740.dgn
 ISO A1 594mm x 841mm
 Approved:
 Checked:
 Designer:
 Project Management Initials:

NOTES:

1. FOR LEGEND REFER TO DRAWING NO. 60222570/TR19A/FIGURE 4.4.17.
2. THIS DRAWING TO BE READ IN CONJUNCTION WITH DRAWING NOS. 60222570/TR19A/FIGURE 4.4.17 TO 4.4.30.

815500 E

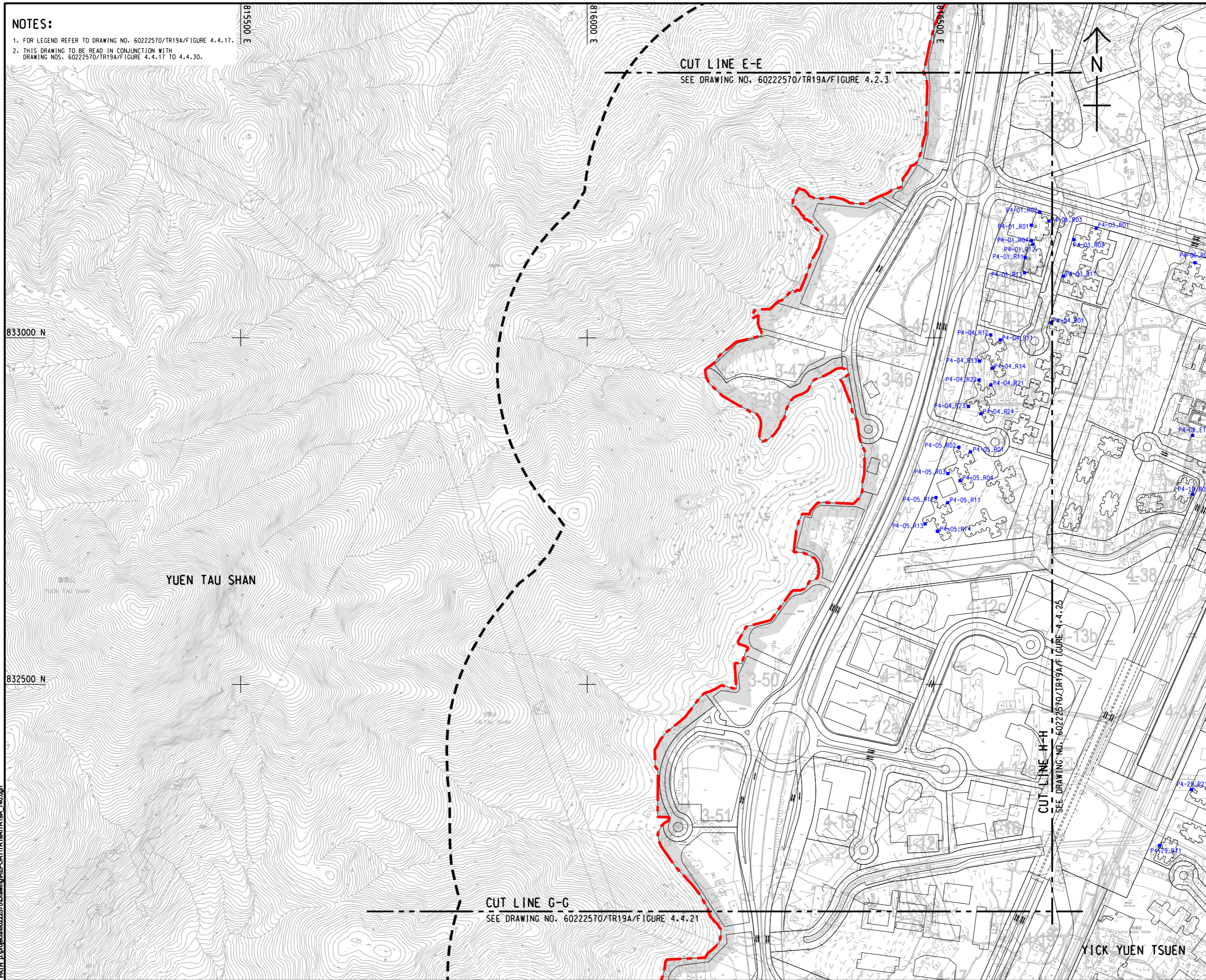
816000 E

816500 E

833000 N

832500 N

Pld File by: YANGYUW
PATH: F:\project\60222570\Drawing\REPORT\TR19A\TR19A_740.dgn



PROJECT
 HUNG SHUI KIU NEW DEVELOPMENT AREA PLANNING AND ENGINEERING STUDY - INVESTIGATION

CLIENT
 業主

土木工程拓展署
 Civil Engineering and Development Department

規劃署
 Planning Department

CONSULTANT
 工程顧問公司
 AECOM Asia Company Ltd.
 www.aecom.com

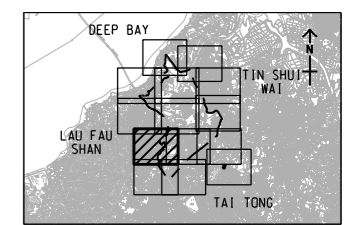
SUB-CONSULTANTS
 分判工程顧問公司

ISSUE/REVISION
 修訂

IR	DATE	DESCRIPTION	CHK.

STATUS
 階段

SCALE
 比例
 A3 1 : 5000
KEY PLAN A3 1 : 30000



PROJECT NO.
 項目編號
 60222570

AGREEMENT NO.
 協議編號
 CE2/2011 (CE)

SHEET TITLE
 圖紙名稱
 LOCATIONS OF REPRESENTATIVE NOISE SENSITIVE RECEIVERS FOR ROAD TRAFFIC NOISE
 SHEET 4 OF 14

SHEET NUMBER
 圖紙編號
 60222570/TR19A/FIGURE 4.4.20

This drawing has been prepared for the use of AECOM's client. It may not be used, modified, reproduced or relied upon by third parties, except as agreed by AECOM in writing. AECOM accepts no responsibility, and denies any liability whatsoever, for any party that uses or relies on this drawing without AECOM's express written consent. Do not scale this document. All measurements must be obtained from the stated dimensions.