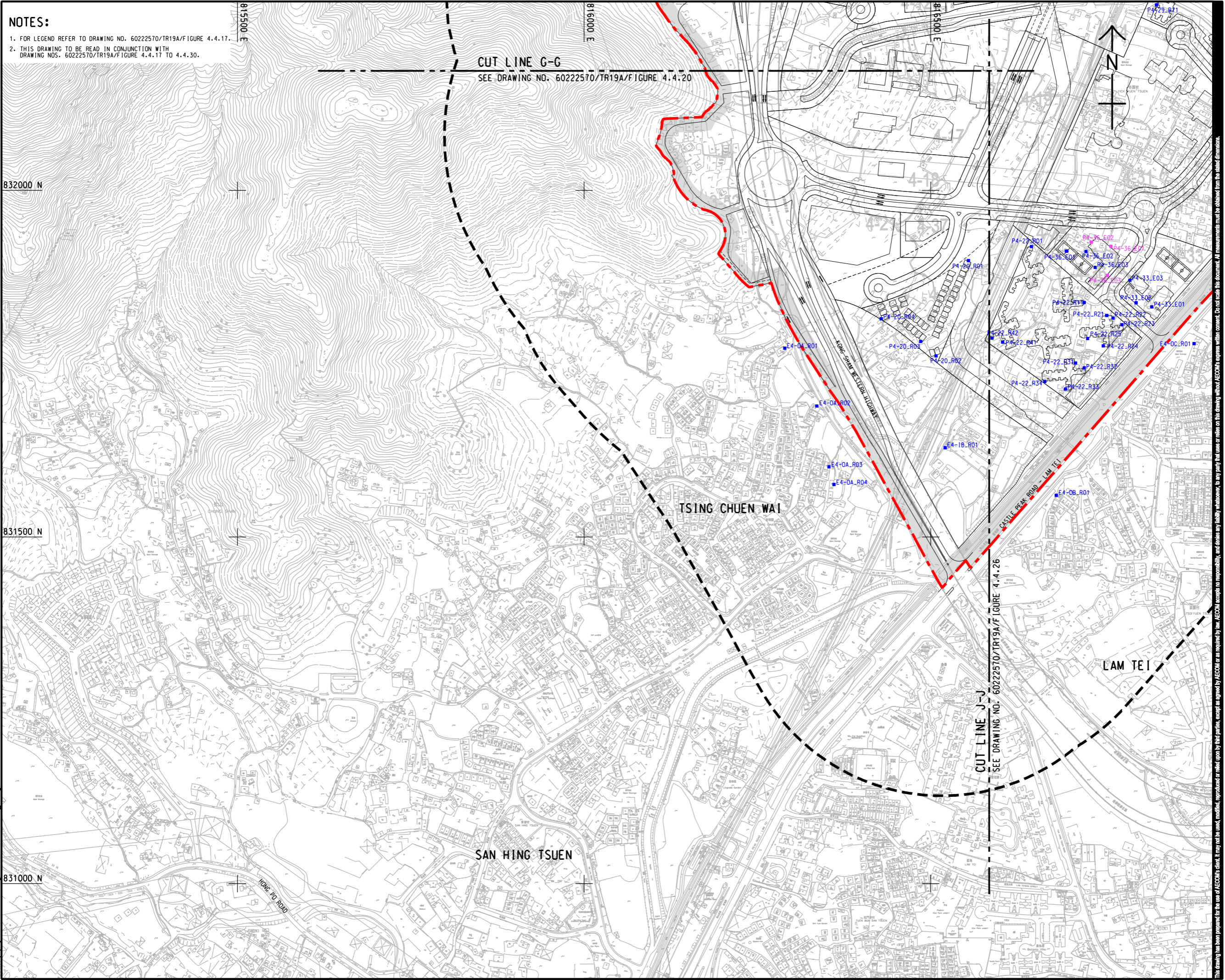


ISO A1 594mm x 841mm
 Approved:
 Checked:
 Designer:
 Project Management Initials:
 Pld File by: YANGYW
 PATH: E:\projects\60222570\Drawings\REPORT\TR19A\TR19A_741.dgn





NOTES:

1. FOR LEGEND REFER TO DRAWING NO. 60222570/TR19A/FIGURE 4.4.17.
2. THIS DRAWING TO BE READ IN CONJUNCTION WITH DRAWING NOS. 60222570/TR19A/FIGURE 4.4.17 TO 4.4.30.

CUT LINE G-G
SEE DRAWING NO. 60222570/TR19A/FIGURE 4.4.20

CUT LINE J-J
SEE DRAWING NO. 60222570/TR19A/FIGURE 4.4.26

AECOM
PROJECT
HUNG SHUI KIU NEW DEVELOPMENT AREA PLANNING AND ENGINEERING STUDY - INVESTIGATION

CLIENT
 
 土木工程拓展署 規劃署
 Civil Engineering and Development Department Planning Department

CONSULTANT

 AECOM Asia Company Ltd.
 www.aecom.com

SUB-CONSULTANTS
 分判工程顧問公司

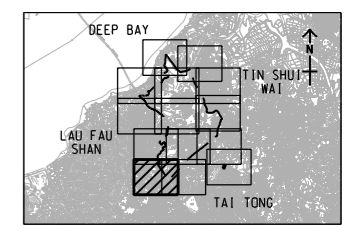
ISSUE/REVISION

IR	DATE	DESCRIPTION	CHK.
號	日期	內容摘要	號

STATUS

SCALE 比例: A3 1:5000
DIMENSION UNIT 尺寸單位: METRES

KEY PLAN 索引圖: A3 1:300000



PROJECT NO. 項目編號: 60222570
AGREEMENT NO. 協議編號: CE2/2011 (CE)

SHEET TITLE 圖紙名稱: LOCATIONS OF REPRESENTATIVE NOISE SENSITIVE RECEIVERS FOR ROAD TRAFFIC NOISE

SHEET NUMBER 圖紙號碼: 60222570/TR19A/FIGURE 4.4.21

SHEET 5 OF 14

This drawing has been prepared for the use of AECOM's client. It may not be used, modified, reproduced or relied upon by third parties, except as approved by AECOM or as required by law. AECOM accepts no responsibility, and denies any liability whatsoever, to any party, for uses or reliance on this drawing without AECOM's express written consent. Do not create this document. All measurements must be obtained from the stated dimensions.