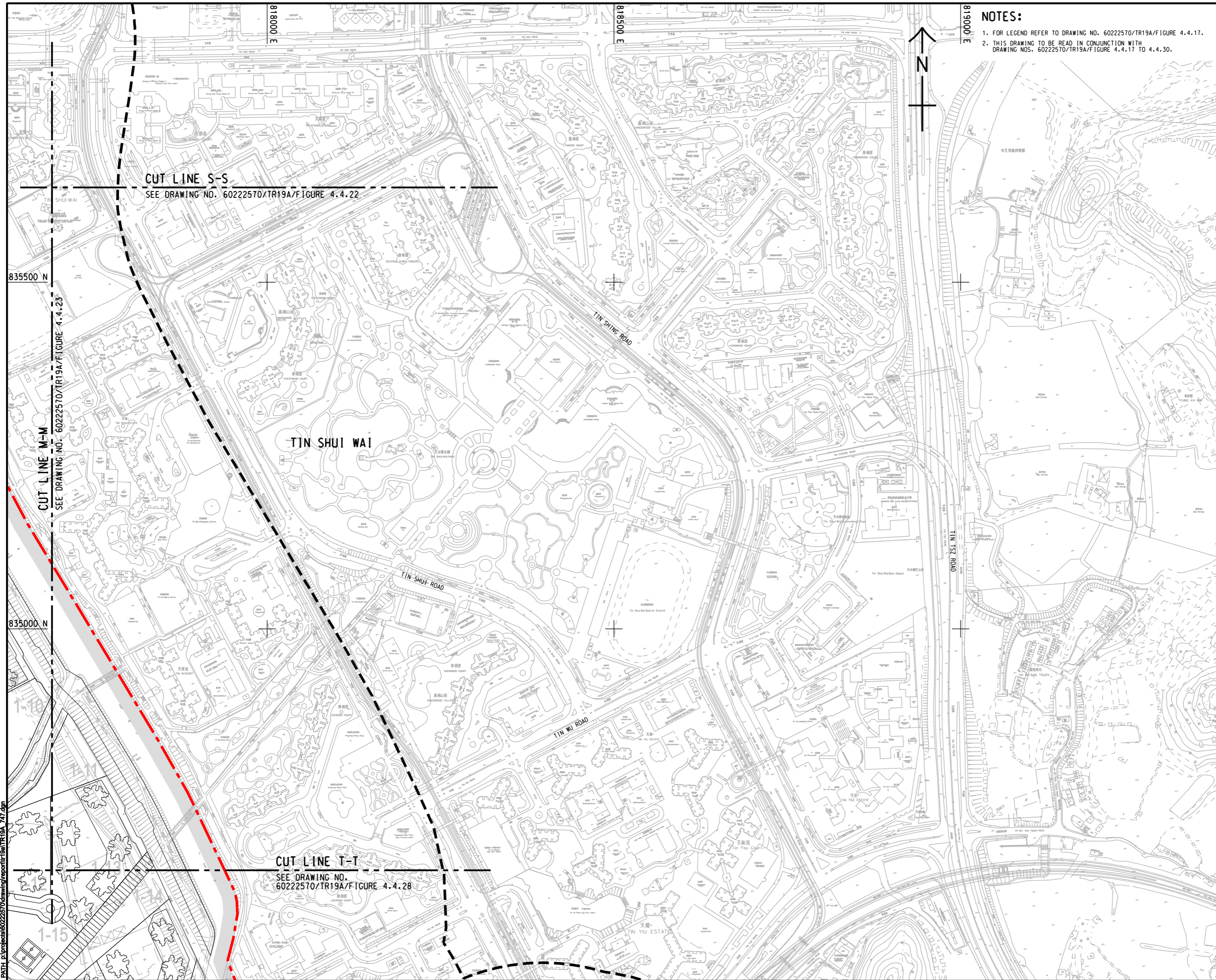


ISO A1 594mm x 841mm  
Approved:  
Checked:  
Designer:  
Project Management Initials:



**NOTES:**

1. FOR LEGEND REFER TO DRAWING NO. 60222570/TR19A/FIGURE 4.4.17.
2. THIS DRAWING TO BE READ IN CONJUNCTION WITH DRAWING NOS. 60222570/TR19A/FIGURE 4.4.17 TO 4.4.30.



**PROJECT**

**HUNG SHUI KIU NEW DEVELOPMENT AREA PLANNING AND ENGINEERING STUDY - INVESTIGATION**

**CLIENT**



**CONSULTANT**

AECOM Asia Company Ltd.  
www.aecom.com

**SUB-CONSULTANTS**

**ISSUE/REVISION**

IR	DATE	DESCRIPTION	CHK.

**STATUS**

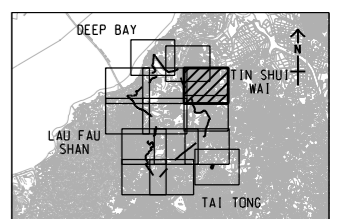
**SCALE**

A3 1:5000

**DIMENSION UNIT**

METRES

**KEY PLAN**



**PROJECT NO.**

60222570

**AGREEMENT NO.**

CE2/2011 (CE)

**SHEET TITLE**

LOCATIONS OF REPRESENTATIVE NOISE SENSITIVE RECEIVERS FOR ROAD TRAFFIC NOISE

SHEET 11 OF 14

**SHEET NUMBER**

60222570/TR19A/FIGURE 4.4.27

This drawing has been prepared for the use of AECOM's client. It may not be used, modified, reproduced or relied upon by third parties, except as agreed by AECOM or as required by law. AECOM accepts no responsibility, and denies any liability whatsoever, to any party, for losses or claims on this drawing without AECOM's express written consent. Do not scale this document. All measurements must be obtained from the stated dimensions.

Pld File by: ANHLS  
PATH: E:\projects\60222570\drawing\center\6a\TR19A\_747.dgn