

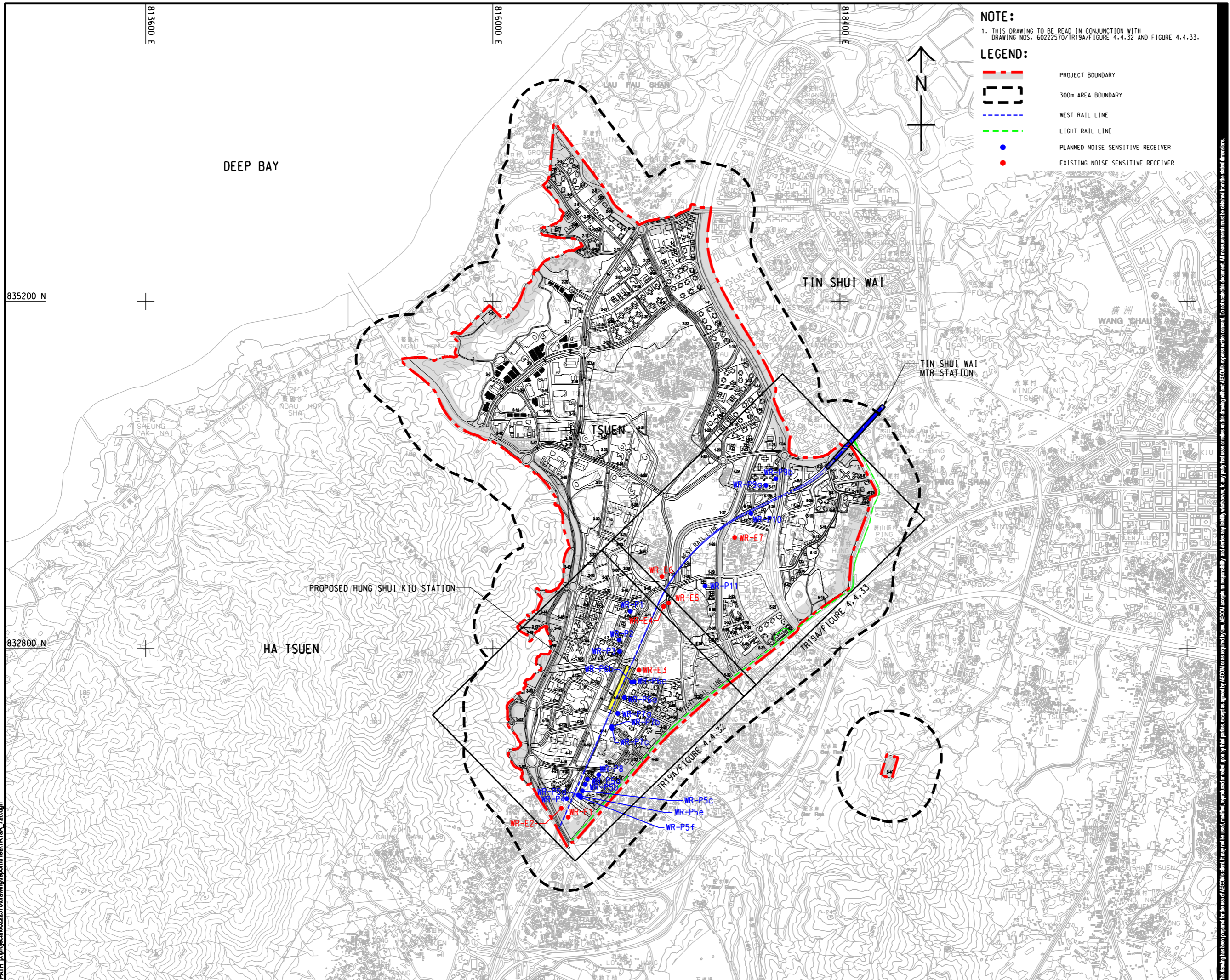
813600 E

816000 E

818400 E

835200 N

832800 N



NOTE:

1. THIS DRAWING TO BE READ IN CONJUNCTION WITH DRAWING NOS. 60222570/TR19A/FIGURE 4.4.32 AND FIGURE 4.4.33.

LEGEND:

- PROJECT BOUNDARY
- 300m AREA BOUNDARY
- WEST RAIL LINE
- LIGHT RAIL LINE
- PLANNED NOISE SENSITIVE RECEIVER
- EXISTING NOISE SENSITIVE RECEIVER



PROJECT

HUNG SHUI KIU NEW DEVELOPMENT AREA PLANNING AND ENGINEERING STUDY - INVESTIGATION

CLIENT



CONSULTANT

AECOM Asia Company Ltd.
www.aecom.com

SUB-CONSULTANTS

ISSUE/REVISION

IR	DATE	DESCRIPTION	CHK

STATUS

SCALE

A3 1 : 24000

DIMENSION UNIT

METRES

KEY PLAN

PROJECT NO.

60222570

AGREEMENT NO.

CE2/2011 (CE)

SHEET TITLE

LOCATIONS OF REPRESENTATIVE NOISE SENSITIVE RECEIVERS FOR RAIL NOISE (WEST RAIL) - KEY PLAN

SHEET NUMBER

60222570/TR19A/FIGURE 4.4.31

This drawing has been prepared for the use of AECOM's client. It may not be used, modified, reproduced or relied upon by third parties, except as approved by AECOM or as required by law. AECOM accepts no responsibility, and denies any liability whatsoever, for any party that uses or relies on this drawing without AECOM's express written consent. Do not scale this document. All measurements must be obtained from the stated dimensions.