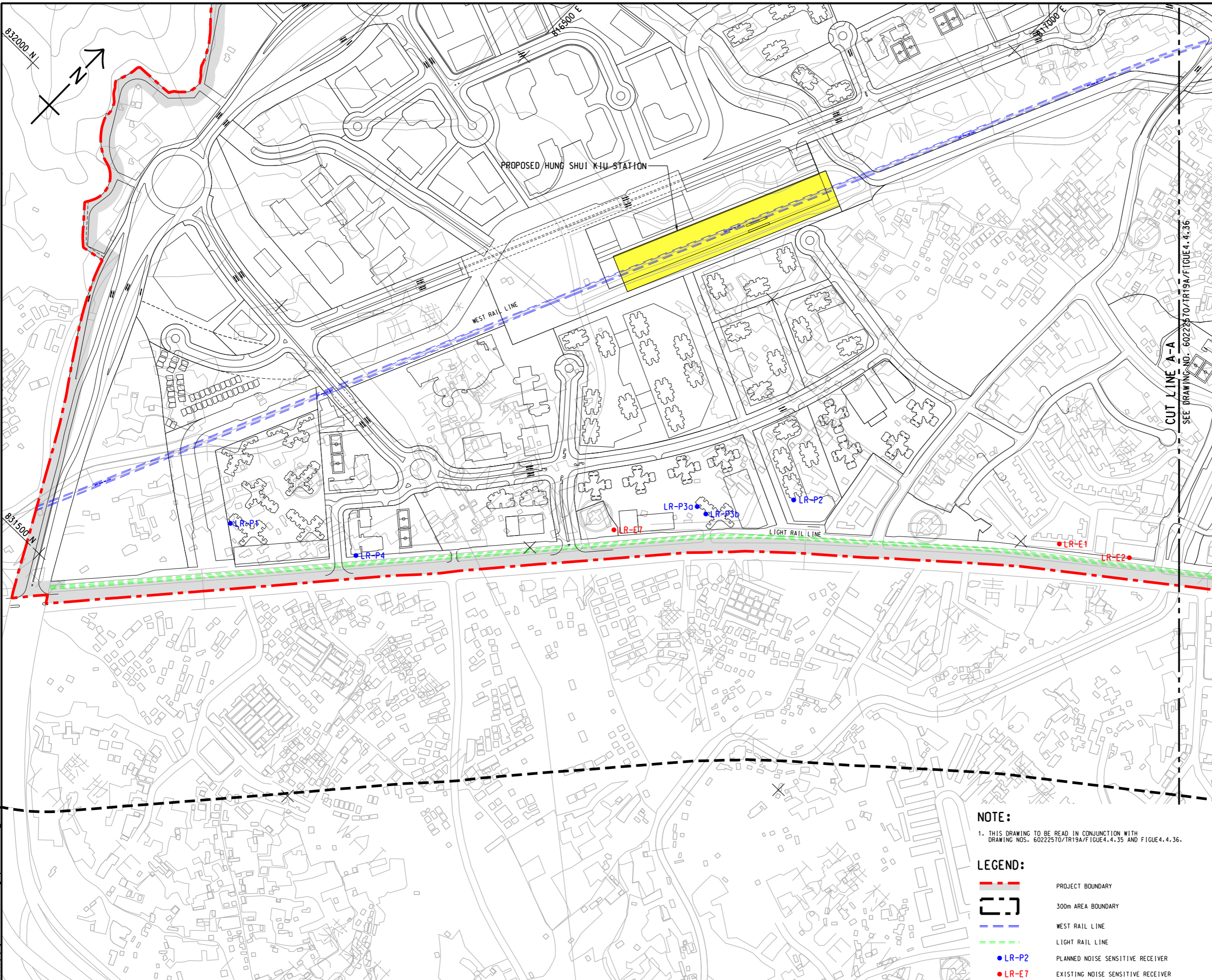




ISO A1 594mm x 841mm
 Approved:
 Checked:
 Designer:
 Project Management Initials:

Pld File by: zengfx
 PATH: E:\projects\60222570\drawing\center\0a\TR19A_003.dgn



AECOM

PROJECT
 項目
HUNG SHUI KIU NEW DEVELOPMENT AREA PLANNING AND ENGINEERING STUDY - INVESTIGATION

CLIENT
 業主

 土木工程拓展署
 Civil Engineering and Development Department

 規劃署
 Planning Department

CONSULTANT
 工程顧問公司
 AECOM Asia Company Ltd.
 www.aecom.com

SUB-CONSULTANTS
 分判工程顧問公司

ISSUE/REVISION
 更改

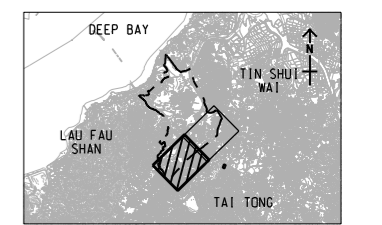
IR	DATE	DESCRIPTION	CHK
號	日期	內容摘要	核

STATUS
 階段

SCALE
 比例
 A3 1 : 5000







DIMENSION UNIT
 尺寸單位
 米/呎

KEY PLAN A3 1 : 300000
 索引圖



NOTE:
 1. THIS DRAWING TO BE READ IN CONJUNCTION WITH DRAWING NOS. 60222570/TR19A/FIGURE 4.4.35 AND FIGURE 4.4.36.

LEGEND:

	PROJECT BOUNDARY
	300m AREA BOUNDARY
	WEST RAIL LINE
	LIGHT RAIL LINE
	PLANNED NOISE SENSITIVE RECEIVER
	EXISTING NOISE SENSITIVE RECEIVER

PROJECT NO.
 項目編號
 60222570

AGREEMENT NO.
 協議編號
 CE2/2011 (CE)

SHEET TITLE
 圖名
 LOCATIONS OF REPRESENTATIVE NOISE SENSITIVE RECEIVERS FOR RAIL NOISE (LIGTH RAIL)

SHEET NUMBER
 圖號
 60222570/TR19A/FIGURE 4.4.35

SHEET 1 OF 2

This drawing has been prepared for the use of AECOM's client. It may not be used, modified, reproduced or relied upon by third parties, except as agreed by AECOM or as required by law. AECOM accepts no responsibility, and denies any liability whatsoever, to any party, for losses or claims on this drawing without AECOM's express written consent. Do not scale this document. All measurements must be obtained from the related dimensions.