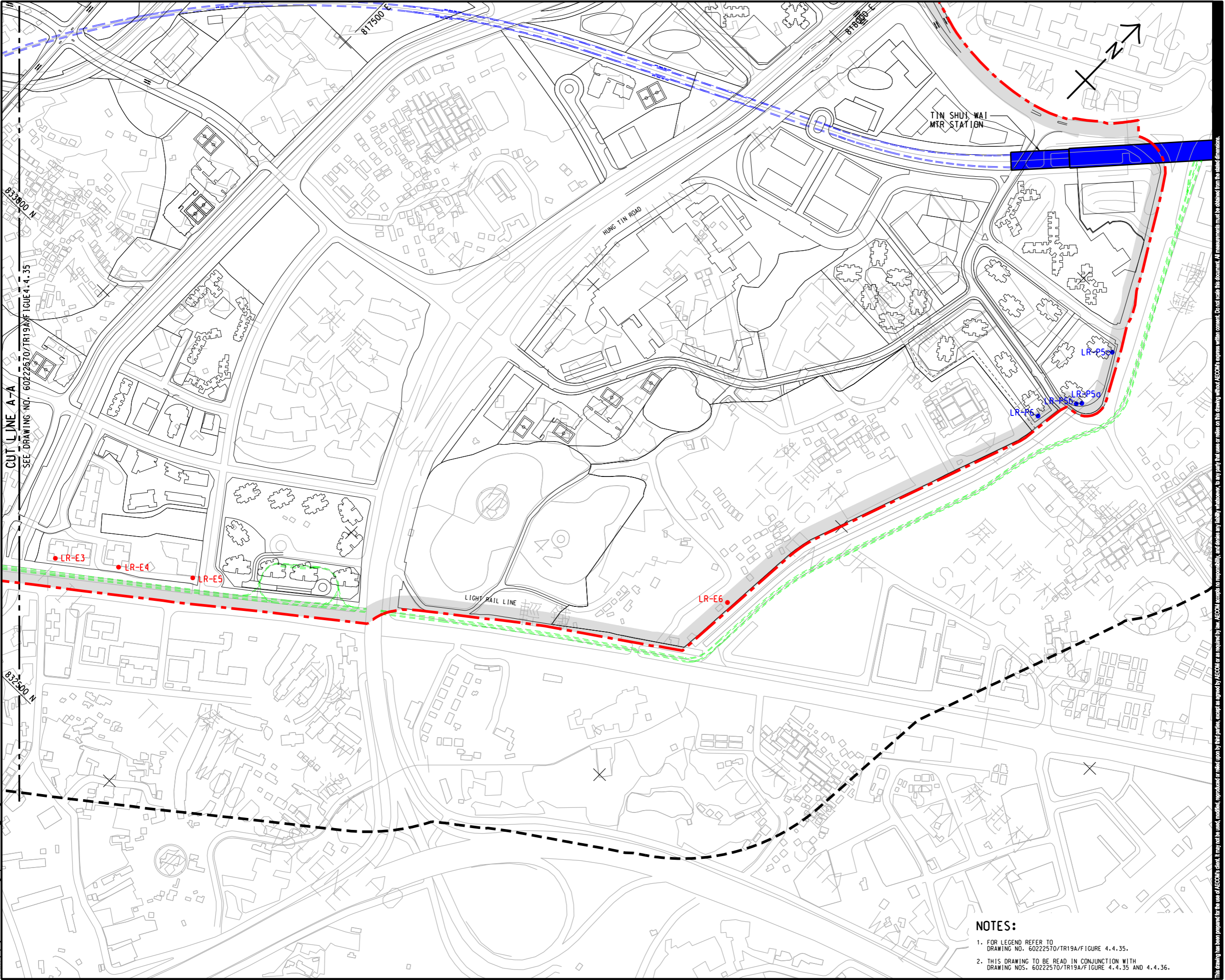


ISO A1 594mm x 841mm
 Approved:
 Checked:
 Designer:
 Project Management Initials:
 CUT LINE A-A
 SEE DRAWING NO. 60222570/TR19A/FIGURE 4.4.35
 832800 N
 832500 N
 PATH: E:\projects\60222570\drawing\center\cut\TR19A_004.dgn



AECOM

PROJECT
 HUNG SHUI KIU NEW DEVELOPMENT AREA
 PLANNING AND ENGINEERING STUDY
 - INVESTIGATION

CLIENT
 CEDD
 土木工程拓展署
 Civil Engineering and Development Department

規劃署
 Planning Department

CONSULTANT
 工務顧問公司
 AECOM Asia Company Ltd.
 www.aecom.com

SUB-CONSULTANTS
 分判工務顧問公司

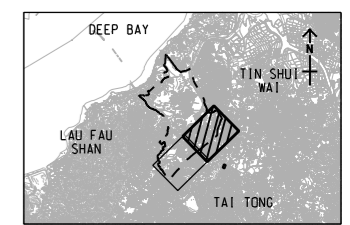
ISSUE/REVISION
 修訂

IR	DATE	DESCRIPTION	CHK

STATUS
 階段

SCALE
 比例
 A3 1:5000

DIMENSION UNIT
 尺寸單位
 A3 1:300000



PROJECT NO.
 項目編號
 60222570

AGREEMENT NO.
 協議編號
 CE2/2011 (CE)

SHEET TITLE
 圖名
 LOCATIONS OF REPRESENTATIVE NOISE SENSITIVE RECEIVERS FOR RAIL NOISE (LIGTH RAIL)

SHEET NUMBER
 圖號
 60222570/TR19A/FIGURE 4.4.36

NOTES:

- FOR LEGEND REFER TO DRAWING NO. 60222570/TR19A/FIGURE 4.4.35.
- THIS DRAWING TO BE READ IN CONJUNCTION WITH DRAWING NOS. 60222570/TR19A/FIGURE 4.4.35 AND 4.4.36.

This drawing has been prepared for the use of AECOM's client. It may not be used, modified, reproduced or relied upon by third parties, except as agreed by AECOM or as required by law. AECOM accepts no responsibility, and denies any liability whatsoever, to any party, for losses or claims on this drawing without AECOM's express written consent. Do not scale this document. All measurements must be obtained from the stated dimensions.