

Pld File by: ZENGFYX  
 PATH: F:\project\60222570\drawing\center\6a\TR19A\_404.dgn  
 Project Management Initials: Designer: Checked: Approved: ISO A1 594mm x 841mm

**NOTES:**

1. FOR LEGEND REFER TO DRAWING NO. 60222570/TR19A/FIGURE 4.4.38.
2. THIS DRAWING TO BE READ IN CONJUNCTION WITH DRAWING NOS. 60222570/TR19A/FIGURE 4.4.38 TO 4.4.51.

815500 E

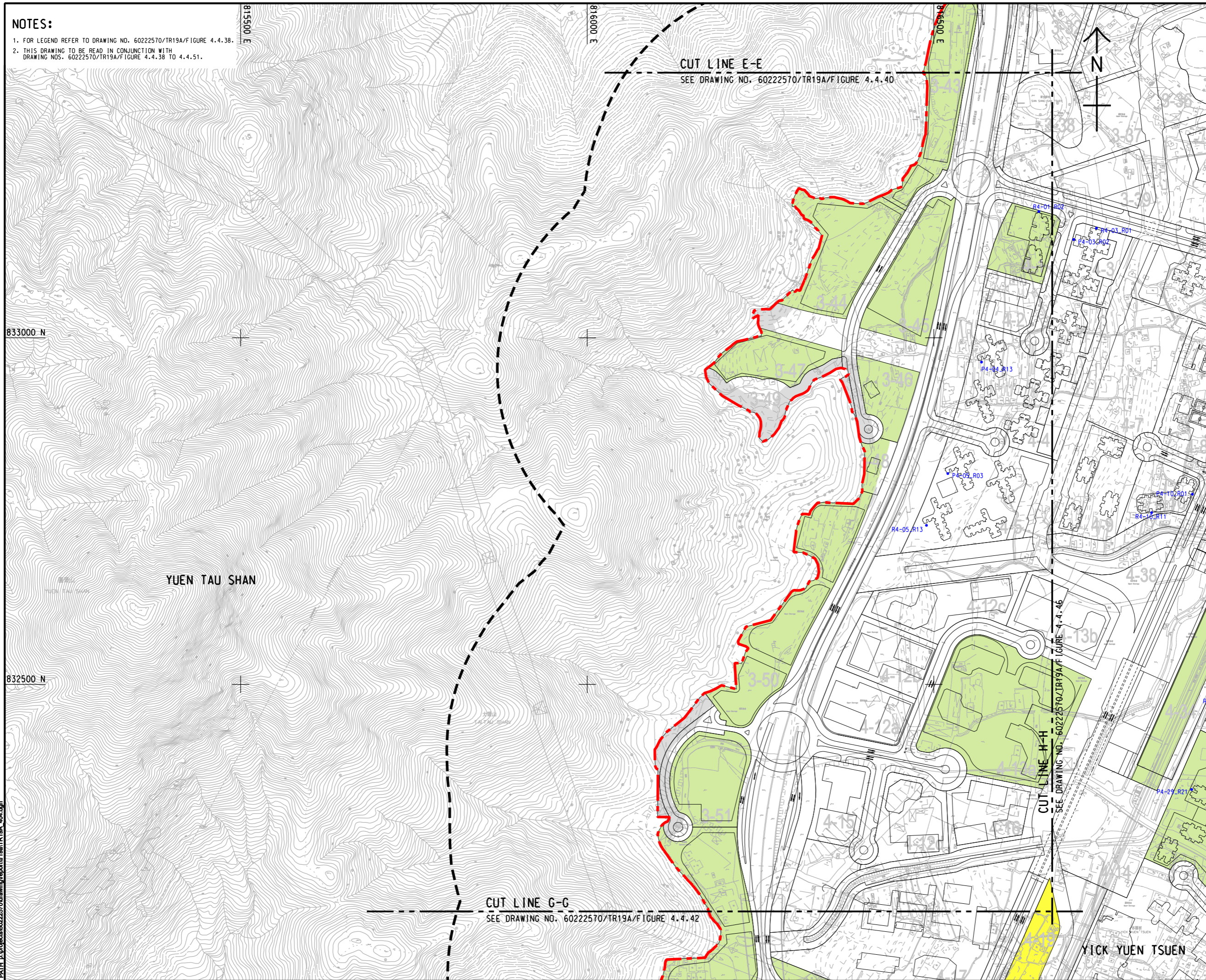
816000 E

815500 E

833000 N

832500 N

Pld File by: ZENGFYX  
PATH: F:\project\60222570\drawing\center\6a\TR19A\_404.dgn



PROJECT  
項目

**HUNG SHUI KIU NEW DEVELOPMENT AREA PLANNING AND ENGINEERING STUDY - INVESTIGATION**

CLIENT  
業主



土木工程拓展署  
Civil Engineering and Development Department



規劃署  
Planning Department

CONSULTANT  
工程顧問公司

AECOM Asia Company Ltd.  
www.aecom.com

SUB-CONSULTANTS  
分判工程顧問公司

**ISSUE/REVISION**  
修訂

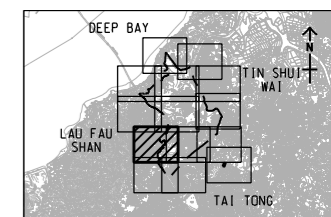
IR 修訂	DATE 日期	DESCRIPTION 內容摘要	CHK. 校核

**STATUS**  
階段

**SCALE** 比例 **DIMENSION UNIT** 尺寸單位

A3 1 : 5000 METRES

**KEY PLAN** 索引圖 A3 1 : 30000



PROJECT NO.  
項目編號

60222570

AGREEMENT NO.  
協議編號

CE2/2011 (CE)

**SHEET TITLE**  
圖紙名稱

LOCATIONS OF FIXED PLANT NOISE SOURCES AND REPRESENTATIVE NOISE SENSITIVE RECEIVERS

SHEET 4 OF 14

**SHEET NUMBER**  
圖紙編號

60222570/TR19A/FIGURE 4.4.41

This drawing has been prepared for the use of AECOM's client. It may not be used, modified, reproduced or relied upon by third parties, except as agreed by AECOM in writing. AECOM accepts no responsibility, and denies any liability whatsoever, for any party that uses or relies on this drawing without AECOM's express written consent. Do not scale this document. All measurements must be obtained from the stated dimensions.