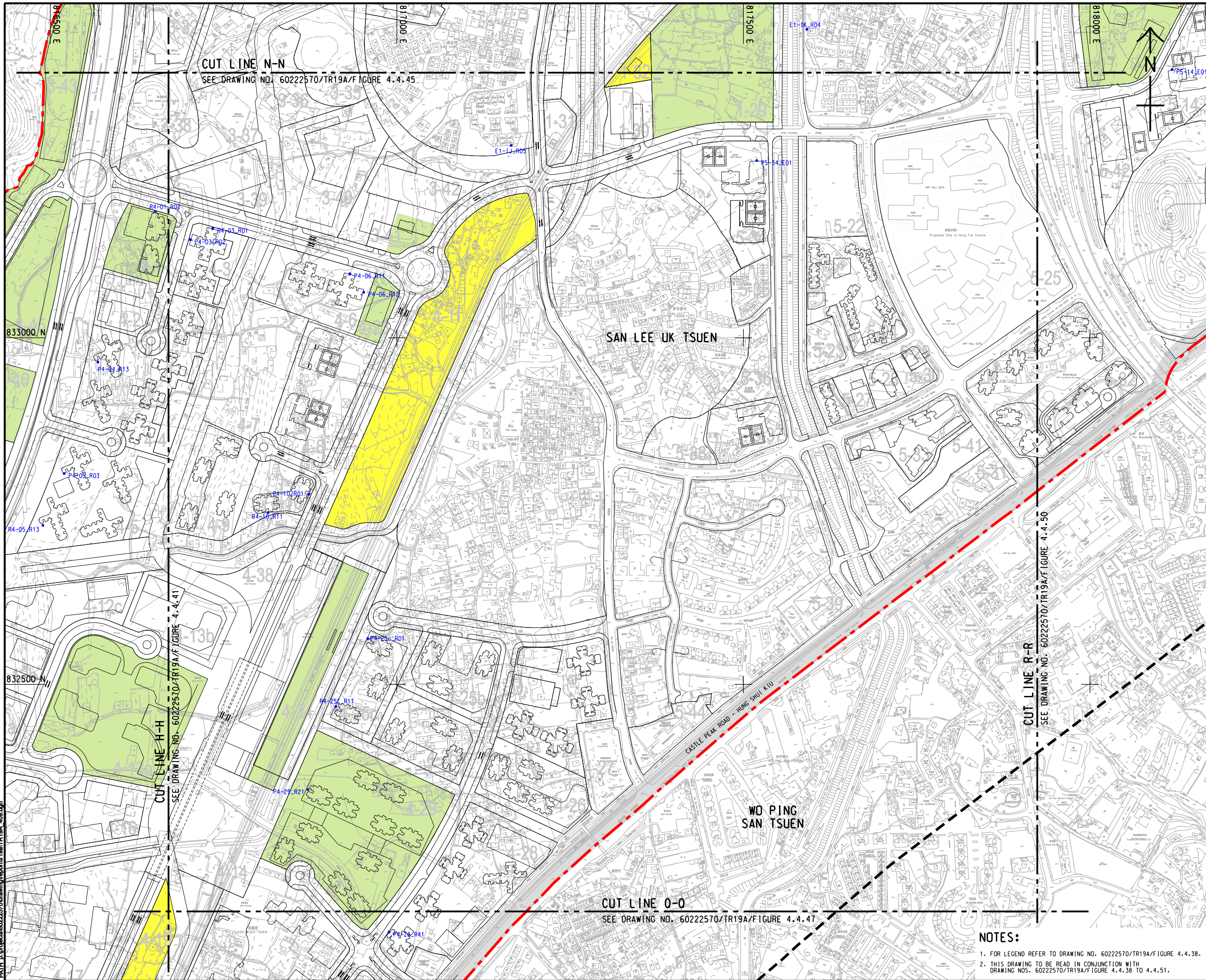




ISO A1 594mm x 841mm
 Approved:
 Checked:
 Designer:
 Project Management Initials:
 Pld File by: ZENGFY
 PATH: E:\projects\60222570\drawing\tr19a\tr19a_408.dgn



AECOM

PROJECT
 HUNG SHUI KIU NEW DEVELOPMENT AREA PLANNING AND ENGINEERING STUDY - INVESTIGATION

CLIENT
 
 土木工程拓展署 規劃署
 Civil Engineering and Development Department Planning Department

CONSULTANT
 工程顧問公司
 AECOM Asia Company Ltd.
 www.aecom.com

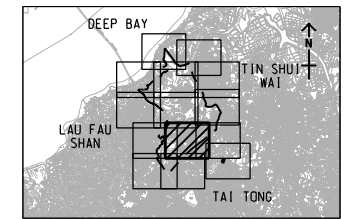
SUB-CONSULTANTS
 分判工程顧問公司

ISSUE/REVISION
 修訂

IR	DATE	DESCRIPTION	CHK.
號	日期	內容摘要	核

STATUS
 狀態

SCALE
 比例
 A3 1:5000 METRES
KEY PLAN A3 1:30000
 索引圖



PROJECT NO.
 項目編號
 60222570

AGREEMENT NO.
 協議編號
 CE2/2011 (CE)

SHEET TITLE
 圖名
 LOCATIONS OF FIXED PLANT NOISE SOURCES AND REPRESENTATIVE NOISE SENSITIVE RECEIVERS
 SHEET 9 OF 14

SHEET NUMBER
 圖號
 60222570/TR19A/FIGURE 4.4.46

- NOTES:**
- FOR LEGEND REFER TO DRAWING NO. 60222570/TR19A/FIGURE 4.4.38.
 - THIS DRAWING TO BE READ IN CONJUNCTION WITH DRAWING NOS. 60222570/TR19A/FIGURE 4.4.38 TO 4.4.51.

This drawing has been prepared for the use of AECOM's client. It may not be used, modified, reproduced or relied upon by third parties, except as required by law. AECOM accepts no responsibility, and does not warrant, for any party, for losses or claims on this drawing without AECOM's express written consent. Do not scale this document. All measurements must be obtained from the related dimensions.