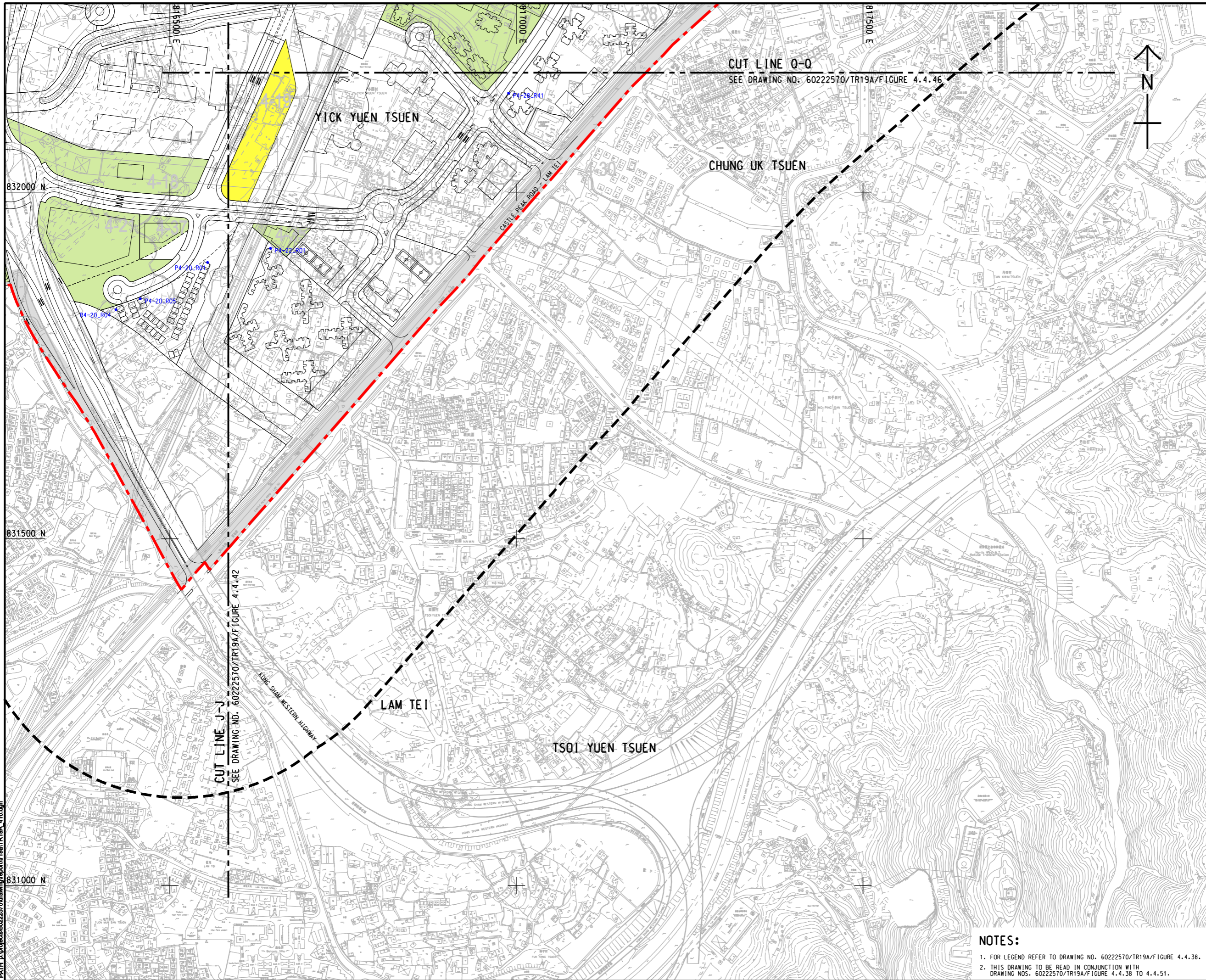




ISO A1 594mm x 841mm
 Approved:
 Checked:
 Designer:
 Project Management Initials:
 Pld File by: ZENGFYX
 PATH: E:\projects\60222570\drawing\center\6a\TR19A_410.dgn



AECOM

PROJECT
 項目
HUNG SHUI KIU NEW DEVELOPMENT AREA PLANNING AND ENGINEERING STUDY - INVESTIGATION

CLIENT
 業主


 土木工程拓展署
 Civil Engineering and Development Department
 規劃署
 Planning Department

CONSULTANT
 工程顧問公司
 AECOM Asia Company Ltd.
 www.aecom.com

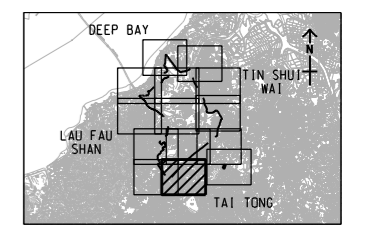
SUB-CONSULTANTS
 分判工程顧問公司

ISSUE/REVISION
 修訂

IR	DATE	DESCRIPTION	CHK
修訂	日期	內容描述	核對

STATUS
 階段

SCALE
 比例
 A3 1 : 5000
KEY PLAN
 索引圖
 A3 1 : 30000



PROJECT NO.
 項目編號
 60222570
AGREEMENT NO.
 協議編號
 CE2/2011 (CE)

SHEET TITLE
 圖名
LOCATIONS OF FIXED PLANT NOISE SOURCES AND REPRESENTATIVE NOISE SENSITIVE RECEIVERS
 固定廠房噪音源及代表性噪音敏感接收器位置
 SHEET 10 OF 14

SHEET NUMBER
 圖號
 60222570/TR19A/FIGURE 4.4.47

- NOTES:**
- FOR LEGEND REFER TO DRAWING NO. 60222570/TR19A/FIGURE 4.4.38.
 - THIS DRAWING TO BE READ IN CONJUNCTION WITH DRAWING NOS. 60222570/TR19A/FIGURE 4.4.38 TO 4.4.51.

This drawing has been prepared for the use of AECOM's client. It may not be used, modified, reproduced or relied upon by third parties, except as required by law. AECOM accepts no responsibility, and denies any liability whatsoever, to any party, for losses or claims on this drawing without AECOM's express written consent. Do not scale this document. All measurements must be obtained from the stated dimensions.