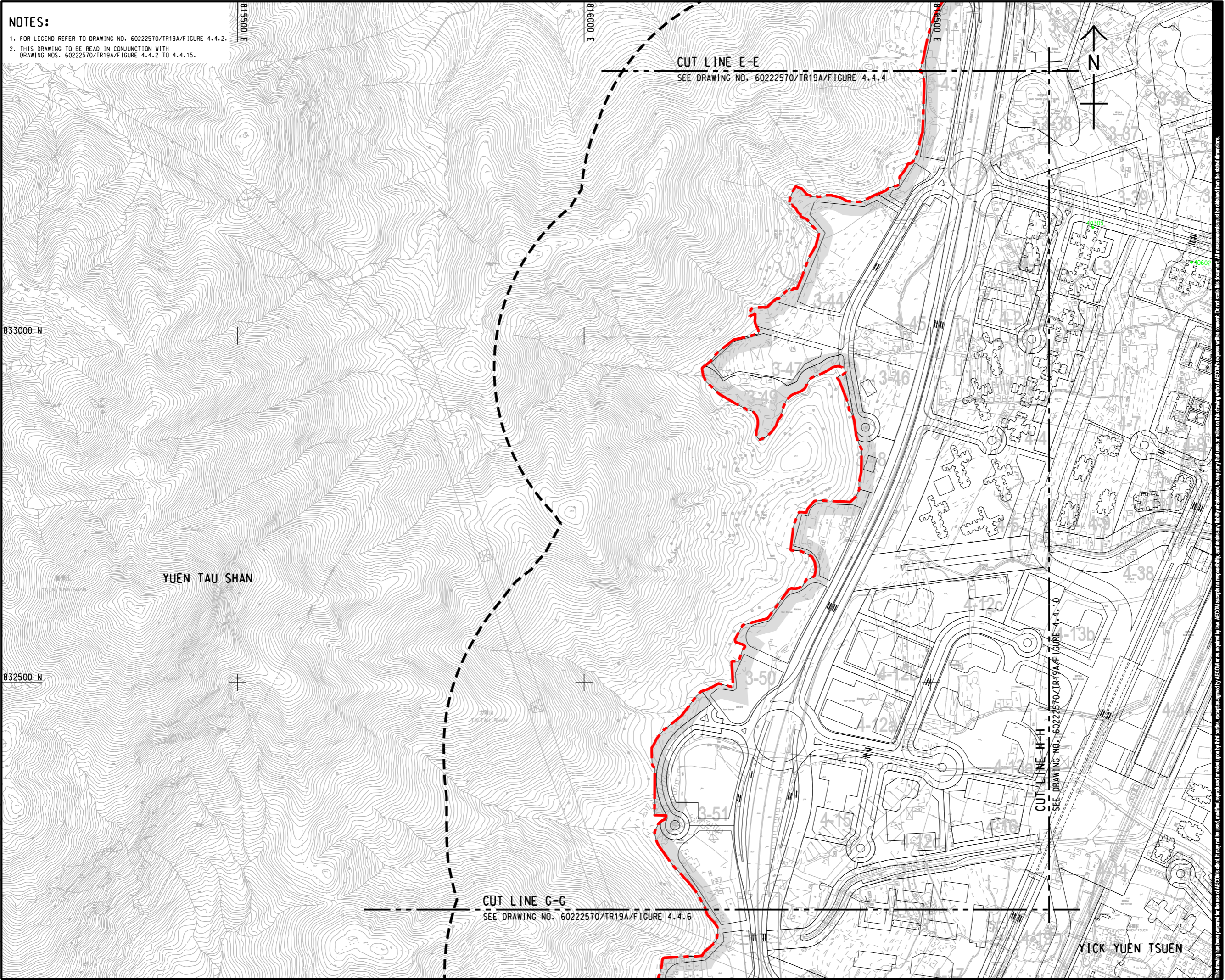


Pld File by: ZENGFYX
 PATH: F:\project\60222570\drawing\center\6a\TR19A_474.dgn
 Project Management Initials: Designer: Checked: Approved: ISO A1 594mm x 841mm

NOTES:
 1. FOR LEGEND REFER TO DRAWING NO. 60222570/TR19A/FIGURE 4.4.2.
 2. THIS DRAWING TO BE READ IN CONJUNCTION WITH DRAWING NOS. 60222570/TR19A/FIGURE 4.4.2 TO 4.4.15.



AECOM

PROJECT
 HUNG SHUI KIU NEW DEVELOPMENT AREA PLANNING AND ENGINEERING STUDY - INVESTIGATION

CLIENT
 業主

CEDD 土木工程拓展署
 Civil Engineering and Development Department

Planning Department

CONSULTANT
 工程顧問公司
 AECOM Asia Company Ltd.
 www.aecom.com

SUB-CONSULTANTS
 分判工程顧問公司

ISSUE/REVISION
 修訂

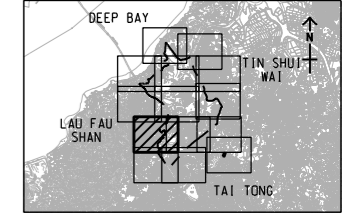
IR	DATE	DESCRIPTION	CHK
號	日期	內容摘要	號

STATUS
 階段

SCALE
 比例: A3 1 : 5000

DIMENSION UNIT
 尺寸單位: METRES

KEY PLAN A3 1 : 300000



PROJECT NO.
 項目編號: 60222570

AGREEMENT NO.
 協議編號: CE2/2011 (CE)

SHEET TITLE
 圖紙名稱: LOCATIONS OF REPRESENTATIVE NOISE SENSITIVE RECEIVERS FOR CONSTRUCTION NOISE

SHEET NUMBER
 圖紙編號: 60222570/TR19A/FIGURE 4.4.5

SHEET 4 OF 14

This drawing has been prepared for the use of AECOM's client. It may not be used, modified, reproduced or relied upon by third parties, except as agreed by AECOM in writing. AECOM accepts no responsibility, and denies any liability whatsoever, for any party that uses or relies on this drawing without AECOM's express written consent. Do not scale this document. All measurements must be obtained from the stated dimensions.