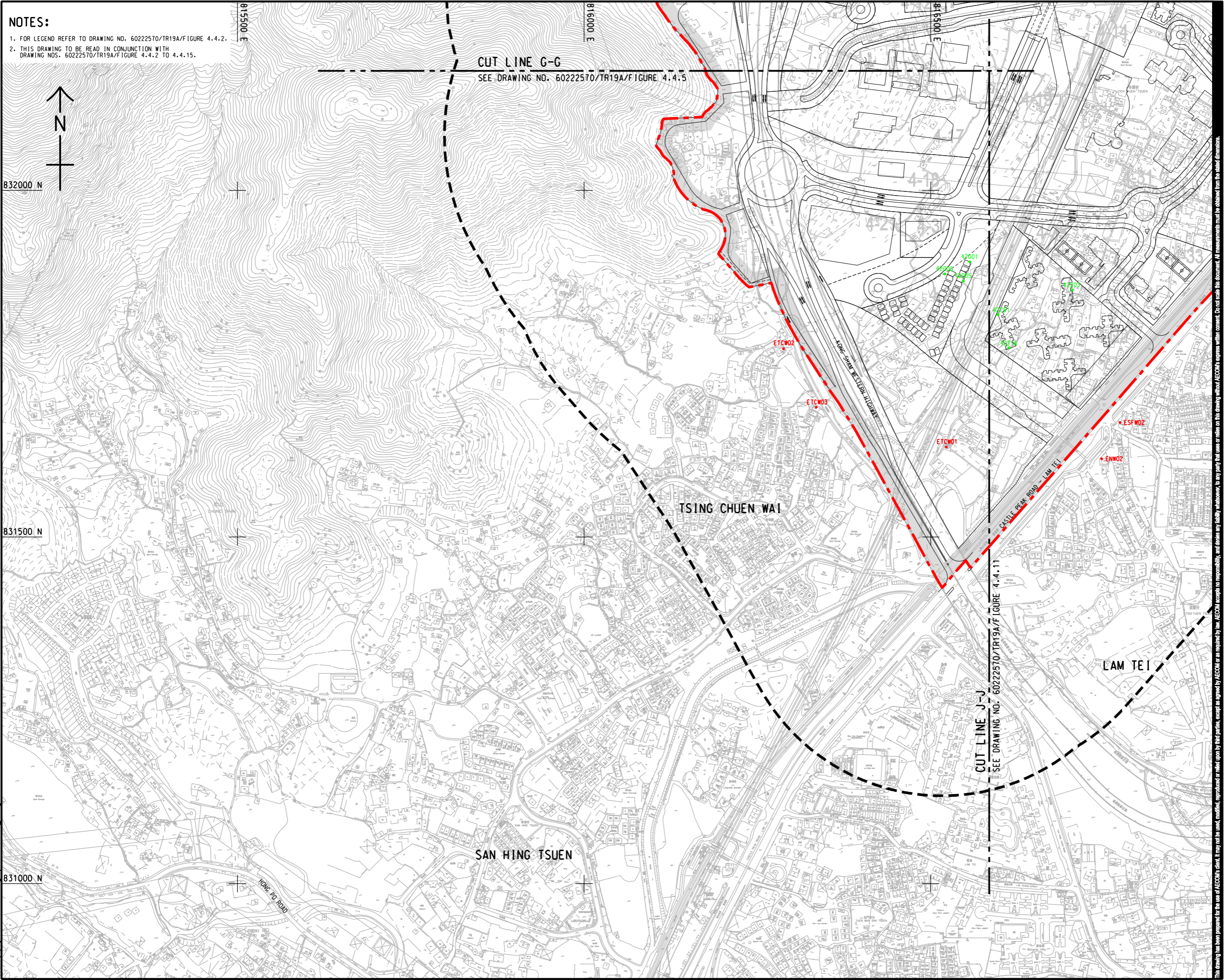


ISO A1 594mm x 841mm
Approved:
Checked:
Designer:
Project Management Initials:
Pld File by: ZENGFYX
PATH: E:\project\60222570\drawing\paper\6a\TR19A_475.dgn



NOTES:
 1. FOR LEGEND REFER TO DRAWING NO. 60222570/TR19A/FIGURE 4.4.2.
 2. THIS DRAWING TO BE READ IN CONJUNCTION WITH DRAWING NOS. 60222570/TR19A/FIGURE 4.4.2 TO 4.4.15.

CUT LINE G-G
 SEE DRAWING NO. 60222570/TR19A/FIGURE 4.4.5

CUT LINE J-J
 SEE DRAWING NO. 60222570/TR19A/FIGURE 4.4.11

AECOM

PROJECT
 HUNG SHUI KIU NEW DEVELOPMENT AREA PLANNING AND ENGINEERING STUDY - INVESTIGATION

CLIENT
 CEDD
 土木工程拓展署
 Civil Engineering and Development Department

CONSULTANT
 AECOM Asia Company Ltd.
 www.aecom.com

SUB-CONSULTANTS
 分判工程顧問公司

ISSUE/REVISION

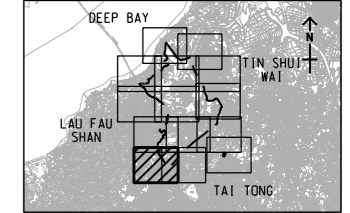
NO.	DATE	DESCRIPTION	CHK.

STATUS
 狀態

SCALE
 比例尺
 A3 1 : 5000

DIMENSION UNIT
 尺寸單位
 METRES

KEY PLAN
 索引圖
 A3 1 : 30000



PROJECT NO.
 項目編號
 60222570

AGREEMENT NO.
 協議編號
 CE2/2011 (CE)

SHEET TITLE
 圖名
 LOCATIONS OF REPRESENTATIVE NOISE SENSITIVE RECEIVERS FOR CONSTRUCTION NOISE

SHEET NUMBER
 圖號
 60222570/TR19A/FIGURE 4.4.6

SHEET 5 OF 14