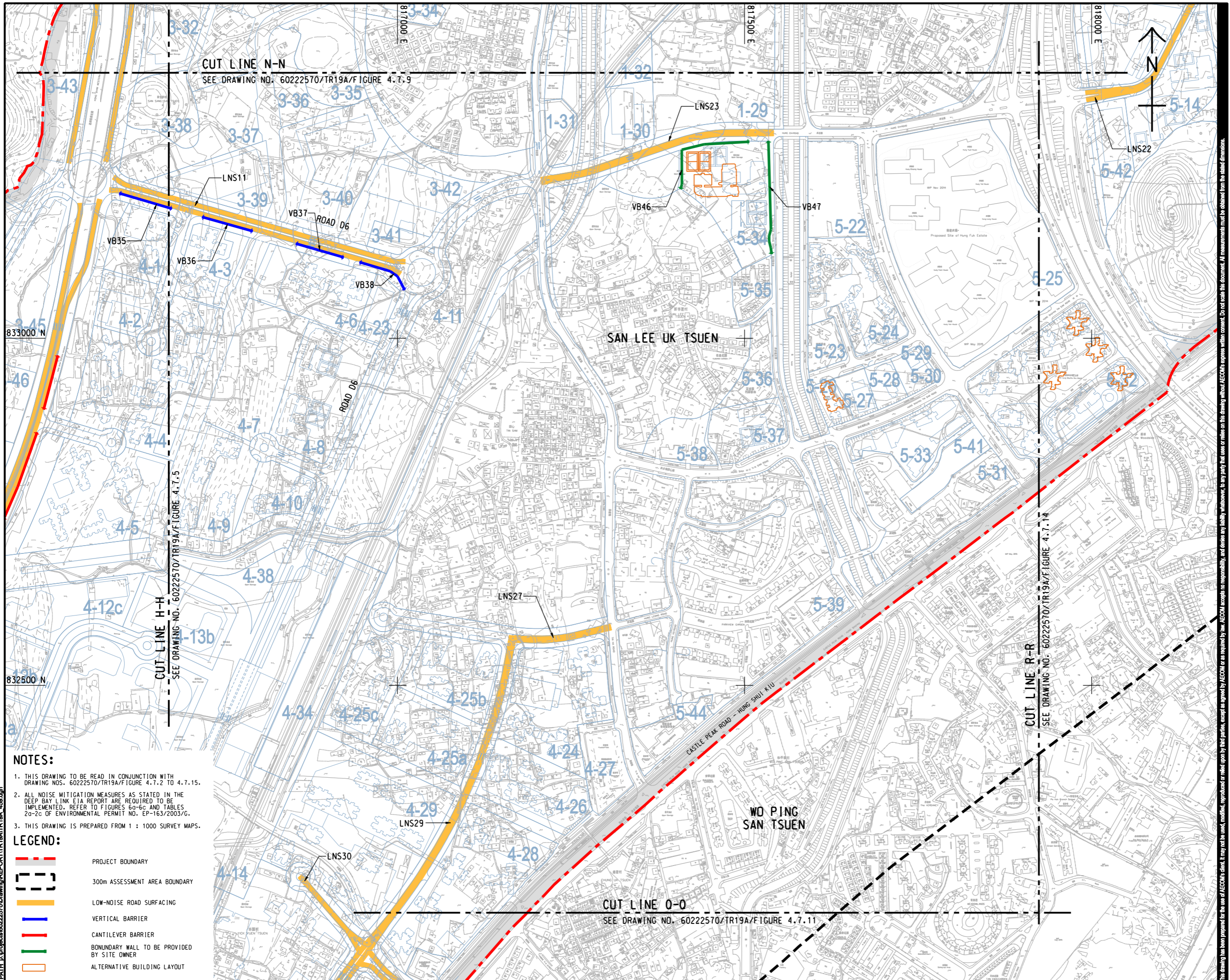


ISO A1 594mm x 841mm
 Approved:
 Checked:
 Designer:
 Project Management Initials:
 Pld File by: YANGYV
 PATH: E:\projects\60222570\Drawings\REPORT\TR19A\TR19A_459.dgn



AECOM

PROJECT
 HUNG SHUI KIU NEW DEVELOPMENT AREA PLANNING AND ENGINEERING STUDY - INVESTIGATION

CLIENT
 CEDD
 土木工程拓展署
 Civil Engineering and Development Department

CONSULTANT
 工務顧問公司
 AECOM Asia Company Ltd.
 www.aecom.com

SUB-CONSULTANTS
 分判工務顧問公司

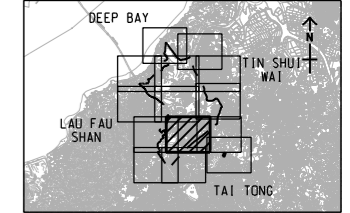
ISSUE/REVISION

NO.	DATE	DESCRIPTION	CHK.

STATUS

SCALE
 比例尺
 A3 1 : 5000
 A4 1 : 30000

DIMENSION UNIT
 尺寸單位
 METRES



- NOTES:**
1. THIS DRAWING TO BE READ IN CONJUNCTION WITH DRAWING NOS. 60222570/TR19A/FIGURE 4.7.2 TO 4.7.15.
 2. ALL NOISE MITIGATION MEASURES AS STATED IN THE DEEP BAY LINK EIA REPORT ARE REQUIRED TO BE IMPLEMENTED. REFER TO FIGURES 60-6c AND TABLES 20-2c OF ENVIRONMENTAL PERMIT NO. EP-163/2003/G.
 3. THIS DRAWING IS PREPARED FROM 1 : 1000 SURVEY MAPS.

- LEGEND:**
- PROJECT BOUNDARY
 - 300m ASSESSMENT AREA BOUNDARY
 - LOW-NOISE ROAD SURFACING
 - VERTICAL BARRIER
 - CANTILEVER BARRIER
 - BOUNDARY WALL TO BE PROVIDED BY SITE OWNER
 - ALTERNATIVE BUILDING LAYOUT

PROJECT NO.
 項目編號
 60222570

AGREEMENT NO.
 協議編號
 CE2/2011 (CE)

SHEET TITLE
 圖則名稱
 LOCATIONS OF PROPOSED ROAD TRAFFIC NOISE MITIGATION MEASURES

SHEET NUMBER
 圖則編號
 SHEET 9 OF 14
 60222570/TR19A/FIGURE 4.7.10

This drawing has been prepared for the use of AECOM's client. It may not be used, modified, reproduced or relied upon by third parties, except as approved by AECOM or as required by law. AECOM accepts no responsibility, and does not warrant, for any party that uses or relies on this drawing without AECOM's express written consent. Do not scale this document. All measurements must be obtained from the related dimensions.