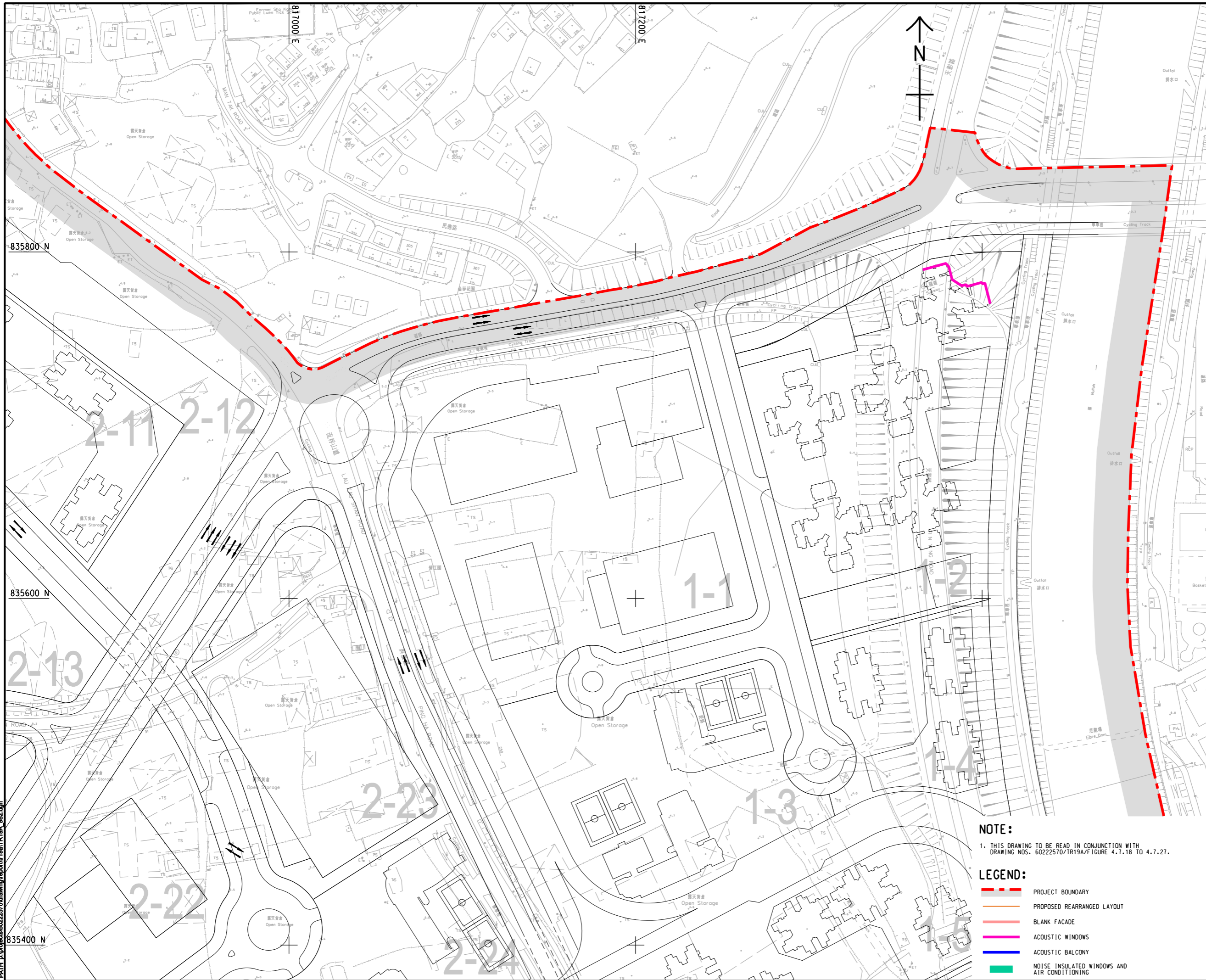




ISO A1 594mm x 841mm
 Approved:
 Checked:
 Designer:
 Project Management Initials:
 Pld File by: zengfx
 PATH: E:\projects\60222570\drawing\paper\0a1\TR19A_082.dgn



AECOM

PROJECT
 項目
HUNG SHUI KIU NEW DEVELOPMENT AREA PLANNING AND ENGINEERING STUDY - INVESTIGATION

CLIENT
 業主

 土木工程拓展署
 Civil Engineering and Development Department

 規劃署
 Planning Department

CONSULTANT
 工程顧問公司
 AECOM Asia Company Ltd.
 www.aecom.com

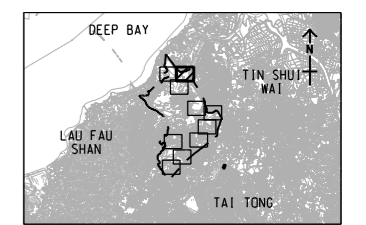
SUB-CONSULTANTS
 分判工程顧問公司

ISSUE/REVISION
 修訂

IR	DATE	DESCRIPTION	CHK.

STATUS
 階段







SCALE
 比例
 A3 1 : 2000
KEY PLAN A3 1 : 30000



PROJECT NO.
 項目編號
 60222570
AGREEMENT NO.
 協議編號
 CE2/2011 (CE)

SHEET TITLE
 圖紙名稱
LOCATIONS OF PROPOSED ADDITIONAL ROAD TRAFFIC NOISE MITIGATION MEASURES
 SHEET 2 OF 10
SHEET NUMBER
 圖紙編號
 60222570/TR19A/FIGURE 4.7.19

NOTE:
 1. THIS DRAWING TO BE READ IN CONJUNCTION WITH DRAWING NOS. 60222570/TR19A/FIGURE 4.7.18 TO 4.7.27.

- LEGEND:**
-  PROJECT BOUNDARY
 -  PROPOSED REARRANGED LAYOUT
 -  BLANK FACADE
 -  ACOUSTIC WINDOWS
 -  ACOUSTIC BALCONY
 -  NOISE INSULATED WINDOWS AND AIR CONDITIONING

This drawing has been prepared for the use of AECOM's client. It may not be used, modified, reproduced or relied upon by third parties, except as agreed by AECOM or as required by law. AECOM accepts no responsibility, and disclaims any liability whatsoever, for any party that uses or relies on this drawing without AECOM's express written consent. Do not scale this document. All measurements must be obtained from the stated dimensions.