








ISO A1 594mm x 841mm  
Approved:  
Checked:  
Designer:  
Project Management Initials:  
Pld File by: zhaoh  
PATH: E:\projects\60222570\drawing\paper\6a\TR19A\_462.dgn

**NOTES:**

1. THIS DRAWING TO BE READ IN CONJUNCTION WITH DRAWING NOS. 60222570/TR19A/FIGURE 4.7.2 TO 4.7.15.
2. ALL NOISE MITIGATION MEASURES AS STATED IN THE DEEP BAY LINK EIA REPORT ARE REQUIRED TO BE IMPLEMENTED. REFER TO FIGURES 6a-6c AND TABLES 2a-2c OF ENVIRONMENTAL PERMIT NO. EP-163/2003/G.
3. THIS DRAWING IS PREPARED FROM 1 : 1000 SURVEY MAPS.

**LEGEND:**

-  PROJECT BOUNDARY
-  300m ASSESSMENT AREA BOUNDARY
-  LOW-NOISE ROAD SURFACING
-  VERTICAL BARRIER
-  CANTILEVER BARRIER
-  BOUNDARY WALL TO BE PROVIDED BY SITE OWNER
-  ALTERNATIVE BUILDING LAYOUT

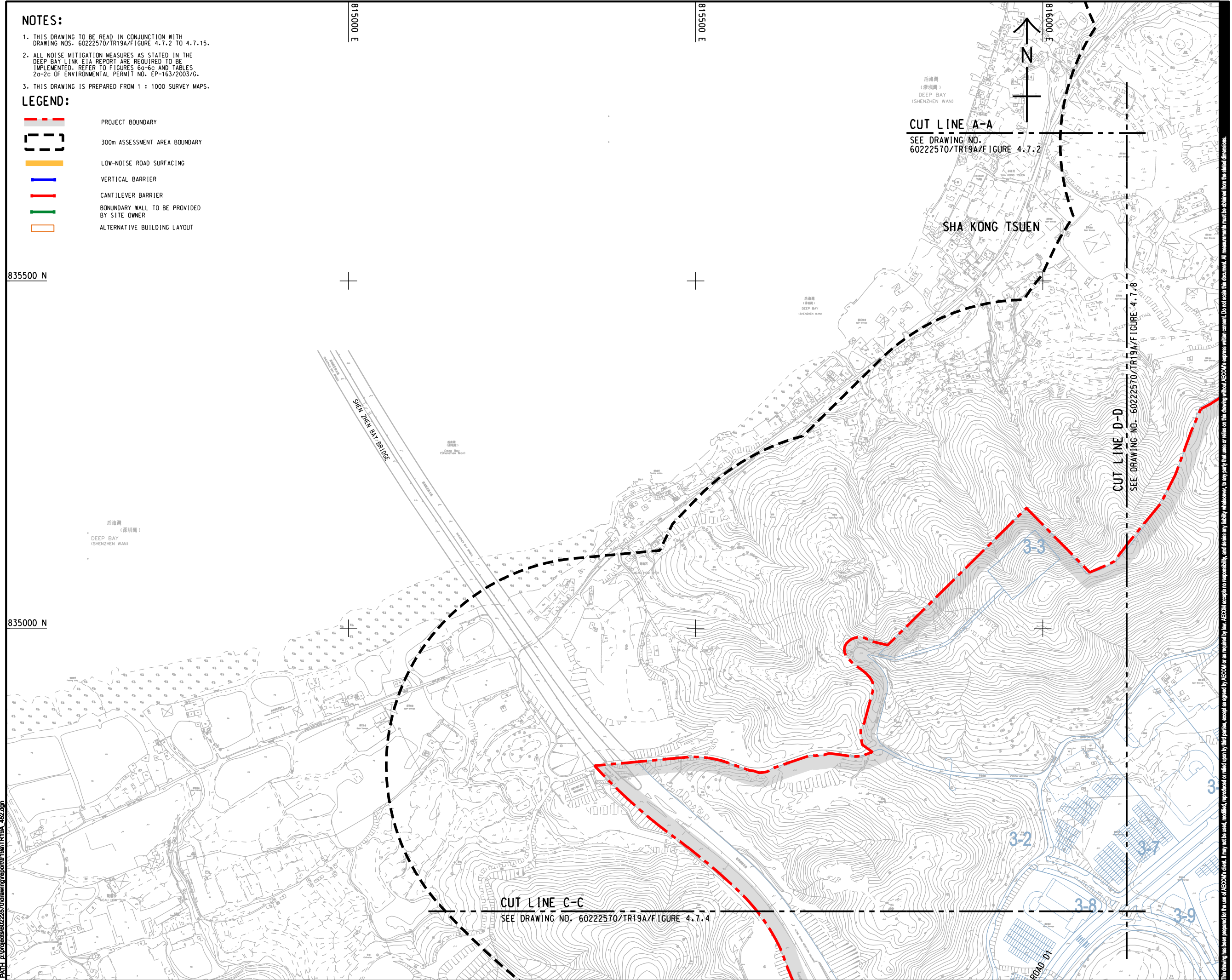
835500 N

835000 N

815000 E

815500 E

816000 E



CUT LINE A-A

SEE DRAWING NO. 60222570/TR19A/FIGURE 4.7.2

SHA KONG TSUEN

CUT LINE D-D

SEE DRAWING NO. 60222570/TR19A/FIGURE 4.7.8

CUT LINE C-C

SEE DRAWING NO. 60222570/TR19A/FIGURE 4.7.4



**PROJECT**

**HUNG SHUI KIU NEW DEVELOPMENT AREA PLANNING AND ENGINEERING STUDY - INVESTIGATION**

**CLIENT**



**CONSULTANT**

AECOM Asia Company Ltd.  
www.aecom.com

**SUB-CONSULTANTS**

**ISSUE/REVISION**

NO.	DATE	DESCRIPTION	CHK.

**STATUS**

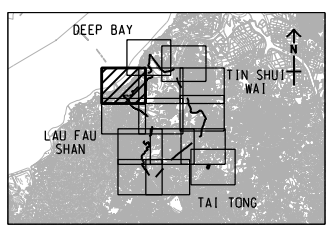
**SCALE**

A3 1 : 5000

**DIMENSION UNIT**

METRES

KEY PLAN A3 1 : 300000



**PROJECT NO.**

60222570

**AGREEMENT NO.**

CE2/2011 (CE)

**SHEET TITLE**

LOCATIONS OF PROPOSED ROAD TRAFFIC NOISE MITIGATION MEASURES

SHEET 2 OF 14

**SHEET NUMBER**

60222570/TR19A/FIGURE 4.7.3

This drawing has been prepared for the use of AECOM's client. It may not be used, modified, reproduced or relied upon by third parties, except as agreed by AECOM or as required by law. AECOM accepts no responsibility, and denies any liability whatsoever, to any party, for losses or claims on this drawing without AECOM's express written consent. Do not scale this document. All measurements must be obtained from the stated dimensions.