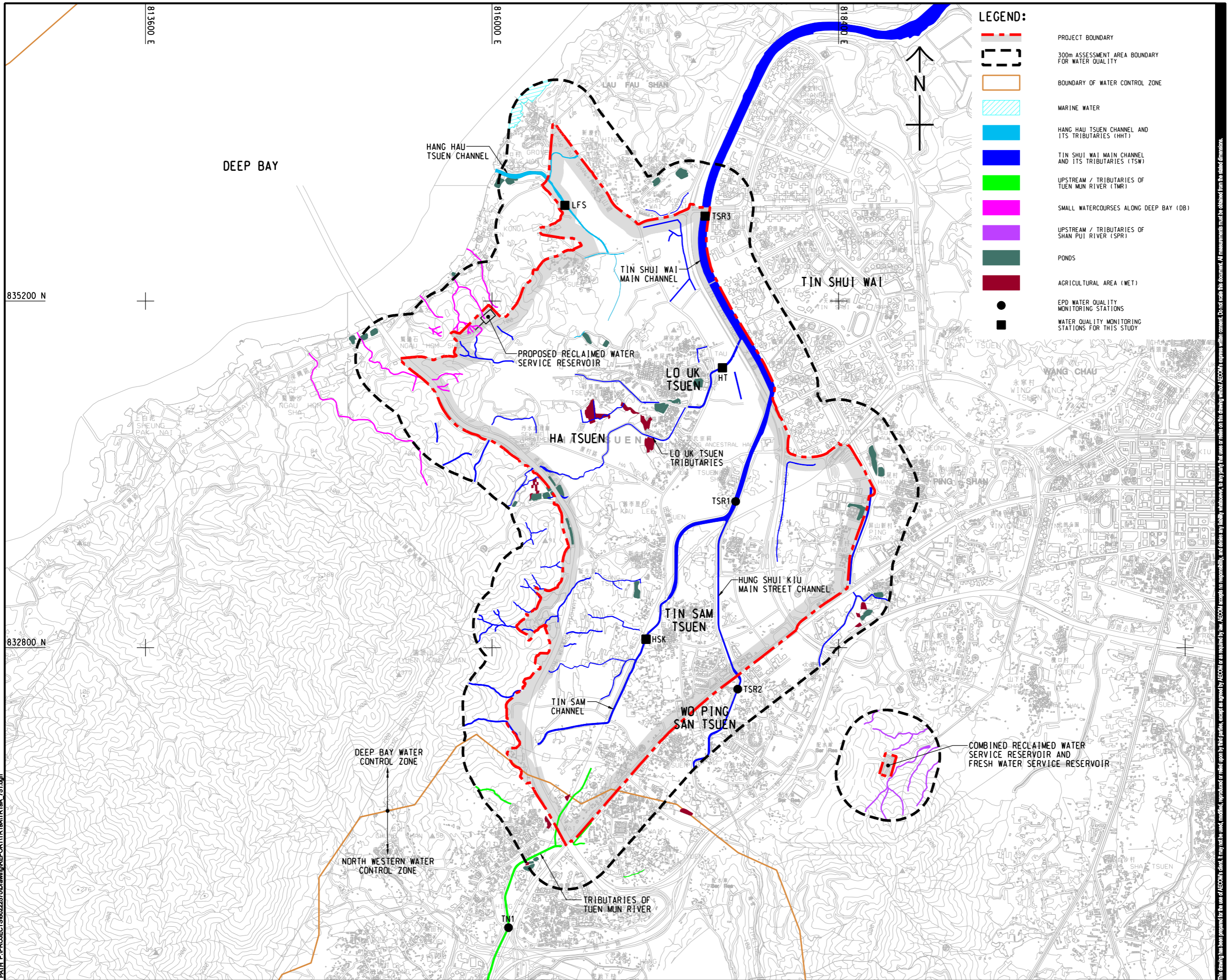


835200 N

813600 E

816000 E

818400 E



- LEGEND:**
- PROJECT BOUNDARY
 - 300m ASSESSMENT AREA BOUNDARY FOR WATER QUALITY
 - BOUNDARY OF WATER CONTROL ZONE
 - MARINE WATER
 - HANG HAU TSUEN CHANNEL AND ITS TRIBUTARIES (HHT)
 - TIN SHUI WAI MAIN CHANNEL AND ITS TRIBUTARIES (TSW)
 - UPSTREAM / TRIBUTARIES OF TUEN MUN RIVER (TMR)
 - SMALL WATERCOURSES ALONG DEEP BAY (DB)
 - UPSTREAM / TRIBUTARIES OF SHAN PUI RIVER (SPR)
 - PONDS
 - AGRICULTURAL AREA (WET)
 - EPD WATER QUALITY MONITORING STATIONS
 - WATER QUALITY MONITORING STATIONS FOR THIS STUDY



PROJECT
HUNG SHUI KIU NEW DEVELOPMENT AREA PLANNING AND ENGINEERING STUDY - INVESTIGATION

CLIENT

 土木工程拓展署 規劃署
 Civil Engineering and Development Department Planning Department

CONSULTANT

 AECOM Asia Company Ltd.
 www.aecom.com

SUB-CONSULTANTS
 分判工程顧問公司

ISSUE/REVISION
 修訂

IR	DATE	DESCRIPTION	CHK.

STATUS
 階段

SCALE
 比例
 A3 1 : 24000

DIMENSION UNIT
 尺寸單位
 METRES

KEY PLAN
 索引圖

PROJECT NO.
 項目編號
 60222570

AGREEMENT NO.
 協議編號
 CE2/2011 (CE)

SHEET TITLE
 圖名
 KEY WATER BODIES WITHIN STUDY AREA AND WATER QUALITY MONITORING STATIONS

SHEET NUMBER
 圖號
 60222570/TR19A/FIGURE 5.1

This drawing has been prepared for the use of AECOM's client. It may not be used, modified, reproduced or relied upon by third parties, except as required by law. AECOM accepts no responsibility, and denies any liability whatsoever, for any party that uses or relies on this drawing without AECOM's express written consent. Do not scale this document. All measurements must be obtained from the stated dimensions.