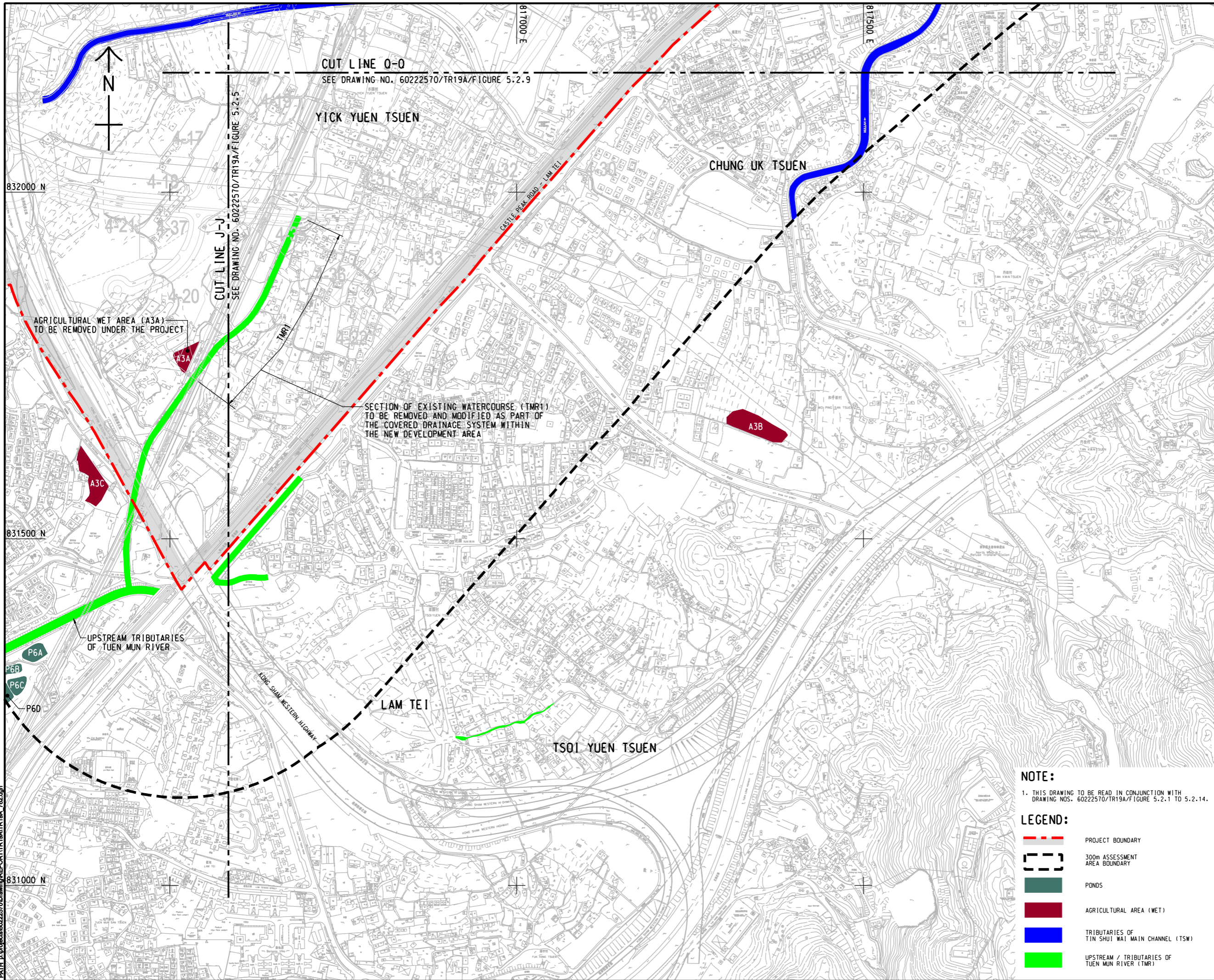




ISO A1 594mm x 841mm
 Approved:
 Checked:
 Designer:
 Project Management Initials:
 Pld File by: P/ENGIN 2016/02/23
 PATH: E:\projects\60222570\Drawings\REPORT\TR19A\TR19A_762.dgn



AECOM

PROJECT
 HUNG SHUI KIU NEW
 DEVELOPMENT AREA
 PLANNING AND
 ENGINEERING STUDY
 - INVESTIGATION

CLIENT
 業主
 
 土木工程拓展署 規劃署
 Civil Engineering and
 Development Department Planning
 Department

CONSULTANT
 工程顧問公司
 AECOM Asia Company Ltd.
 www.aecom.com

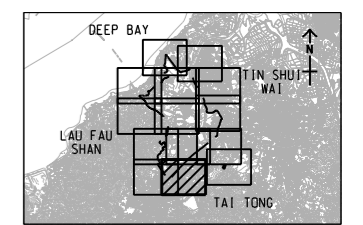
SUB-CONSULTANTS
 分判工程顧問公司

ISSUE/REVISION
 修訂







IR	DATE	DESCRIPTION	CHK

STATUS
 階段

SCALE
 比例
 A3 1 : 5000
KEY PLAN A3 1 : 300000



NOTE:
 1. THIS DRAWING TO BE READ IN CONJUNCTION WITH
 DRAWING NOS. 60222570/TR19A/FIGURE 5.2.1 TO 5.2.14.

- LEGEND:**
-  PROJECT BOUNDARY
 -  300m ASSESSMENT AREA BOUNDARY
 -  PONDS
 -  AGRICULTURAL AREA (WET)
 -  TRIBUTARIES OF TIN SHUI WAI MAIN CHANNEL (TSW)
 -  UPSTREAM / TRIBUTARIES OF TUEN MUN RIVER (TMR)

PROJECT NO.
 項目編號
 60222570

AGREEMENT NO.
 協議編號
 CE2/2011 (CE)

SHEET TITLE
 圖紙名稱
 LOCATIONS OF INLAND
 WATER BODIES

SHEET NUMBER
 圖紙編號
 60222570/TR19A/FIGURE 5.2.10

SHEET 10 OF 14

This drawing has been prepared for the use of AECOM's client. It may not be used, modified, reproduced or relied upon by third parties, except as required by law. AECOM accepts no responsibility, and denies any liability whatsoever, for any party that uses or relies on this drawing without AECOM's express written consent. Do not scale this document. All measurements must be obtained from the stated dimensions.