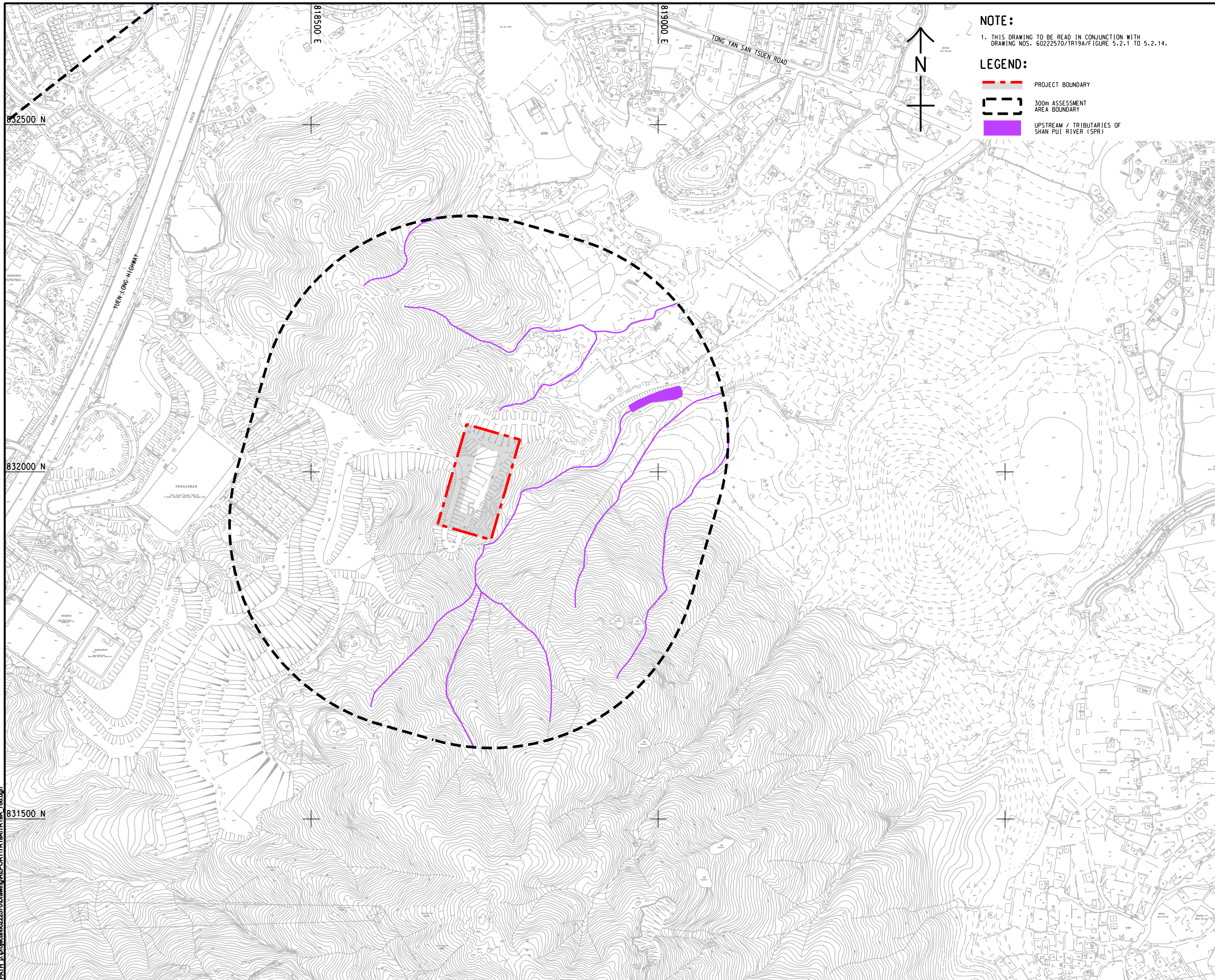


ISO A1 594mm x 841mm
 Approved:
 Checked:
 Designer:
 Project Management Initials:




Pld File by: ANH
 PATH: E:\projects\60222570\Drawing\REPORT\TR19A\TR19A_708.dgn
 2016/07



NOTE:

1. THIS DRAWING TO BE READ IN CONJUNCTION WITH DRAWING NOS. 60222570/TR19A/FIGURE 5.2.1 TO 5.2.14.

LEGEND:

-  PROJECT BOUNDARY
-  300m ASSESSMENT AREA BOUNDARY
-  UPSTREAM / TRIBUTARIES OF SHAN PUI RIVER (SPR)



PROJECT
 項目
HUNG SHUI KIU NEW DEVELOPMENT AREA PLANNING AND ENGINEERING STUDY - INVESTIGATION

CLIENT
 業主



CONSULTANT
 工程顧問公司
 AECOM Asia Company Ltd.
 www.aecom.com

SUB-CONSULTANTS
 分判工程顧問公司

ISSUE/REVISION
 修訂

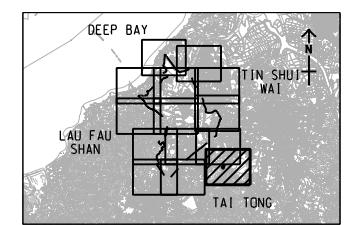
IR	DATE	DESCRIPTION	CHK.
修訂	日期	內容摘要	核實

STATUS
 階段

SCALE **DIMENSION UNIT**
 比例 尺寸單位

A3 1 : 5000 METRES

KEY PLAN A3 1 : 300000



PROJECT NO. **AGREEMENT NO.**
 項目編號 協議編號

60222570 CE2/2011 (CE)

SHEET TITLE
 圖紙名稱

LOCATIONS OF INLAND WATER BODIES

SHEET NUMBER
 圖紙編號

60222570/TR19A/FIGURE 5.2.14

SHEET 14 OF 14

This drawing has been prepared for the use of AECOM's client. It may not be used, modified, reproduced or relied upon by third parties, except as agreed by AECOM or as required by law. AECOM accepts no responsibility, and denies any liability whatsoever, to any party, for uses or reliance on this drawing without AECOM's express written consent. Do not scale this document. All measurements must be obtained from the stated dimensions.