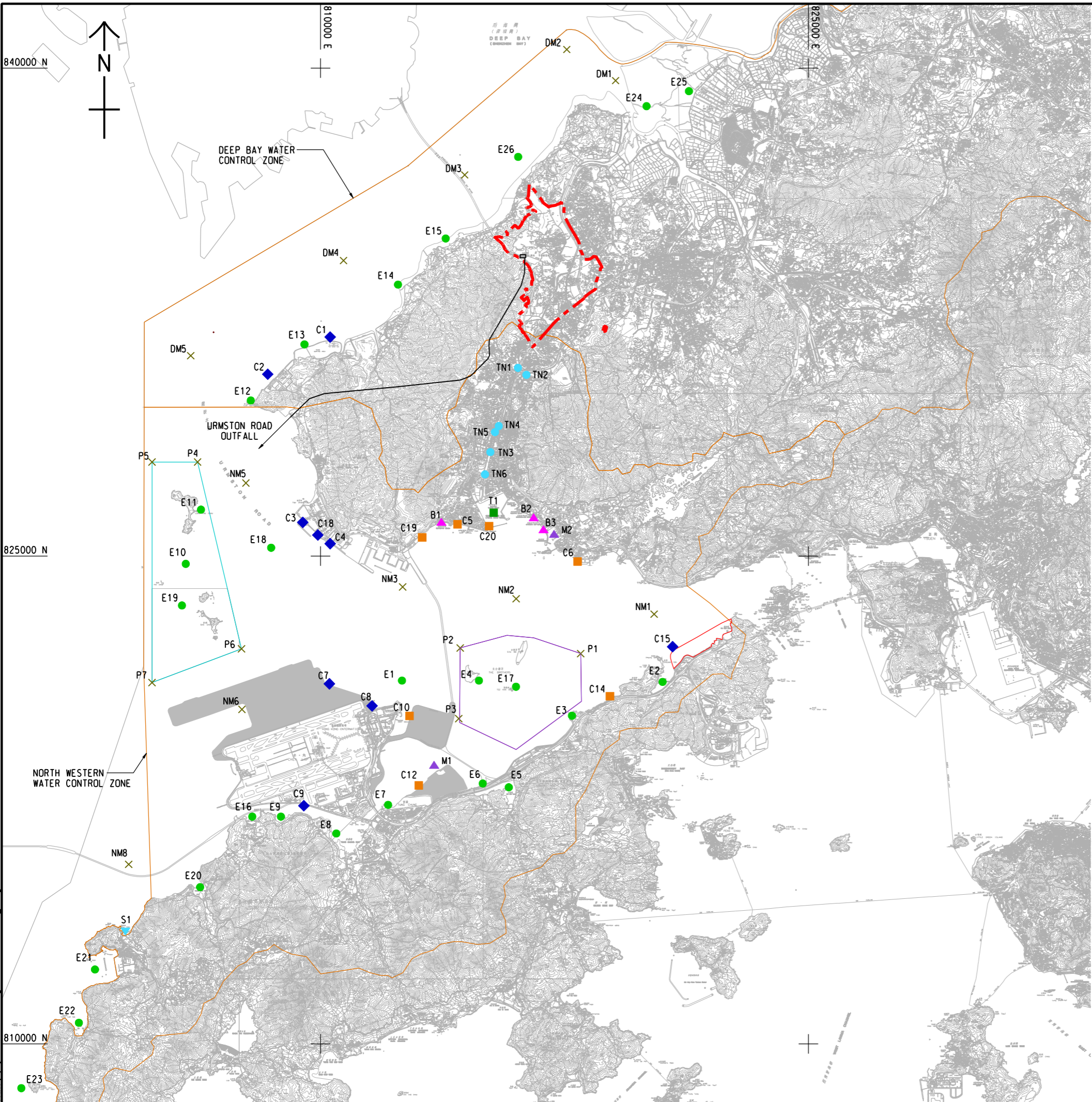


ISO A1 594mm x 841mm
 Approved:
 Checked:
 Designer:
 Project Management Initials:
 2016/06/3
 PATH: E:\projects\60222570\Drawing\REPORT\TR19A\TR19A_708.dgn



LEGEND:

- PROJECT BOUNDARY
- DEVELOPMENT UNDER PLANNING OR UNDER CONSTRUCTION
- SHA CHAU AND LUNG KWU CHAU MARINE PARK
- PROPOSED THE BROTHERS MARINE PARK
- POTENTIAL RECLAMATION SITE
- BOUNDARY OF WATER CONTROL ZONES
- SAN WAI SEWAGE TREATMENT WORKS
- NORTH WEST NEW TERRITORIES (NWNT) EFFLUENT TUNNEL
- URMSTON ROAD OUTFALL
- ◆ COOLING WATER / SEAWATER INTAKES
- ◆ C1 - FUTURE SLUDGE TREATMENT FACILITIES
- ◆ C2 - CLP BLACK POINT POWER STATION
- ◆ C3 - CASTLE PEAK POWER STATION
- ◆ C4 - SHIU WING STEEL MILLS
- ◆ C7 - FUTURE AIRPORT (EAST)
- ◆ C8 - AIRPORT (NORTH)
- ◆ C9 - AIRPORT (SOUTH)
- ◆ C15 - FUTURE SUNNY BAY DEVELOPMENT
- ◆ C18 - CHINA CEMENT PLANT
- FLUSHING WATER INTAKES
- C5 - TUEN MUN (WSD)
- C6 - LOK ON PAI (WSD)
- C10 - FUTURE HKBCF
- C12 - FUTURE TUNG CHUNG EAST
- C14 - SUNNY BAY (WSD)
- C19 - NEAR BUTTERFLY BEACH
- C20 - NEAR LRT TERMINUS
- ▲ BATHING BEACHES
- ▲ B1 - BUTTERFLY
- ▲ B2 - GAZETTED BEACHES AT TUEN MUN
- ▲ B3 - GOLDEN BEACH
- × OBSERVATION POINTS
- × P1 - THE BROTHERS MARINE PARK
- × P2 - THE BROTHERS MARINE PARK
- × P3 - THE BROTHERS MARINE PARK
- × P4 - SHA CHAU AND LUNG KWU CHAU MARINE PARK
- × P5 - SHA CHAU AND LUNG KWU CHAU MARINE PARK
- × P6 - SHA CHAU AND LUNG KWU CHAU MARINE PARK
- × P7 - SHA CHAU AND LUNG KWU CHAU MARINE PARK
- × DM1 - EPD MONITORING STATION AT INNER DEEP BAY
- × DM2 - EPD MONITORING STATION AT INNER DEEP BAY
- × DM3 - EPD MONITORING STATION AT INNER DEEP BAY
- × DM4 - EPD MONITORING STATION AT OUTER DEEP BAY
- × DM5 - EPD MONITORING STATION AT OUTER DEEP BAY
- × NM1 - EPD MONITORING STATION AT LANTAU ISLAND (NORTH)
- × NM2 - EPD MONITORING STATION AT PEARL ISLAND
- × NM3 - EPD MONITORING STATION AT PILLAR POINT
- × NM5 - EPD MONITORING STATION AT URMSTON ROAD
- × NM6 - EPD MONITORING STATION AT CHEK LAP KOK (NORTH)
- × NM8 - EPD MONITORING STATION AT CHEK LAP KOK (WEST)
- TYPHOON SHELTER
- T1 - TUEN MUN
- ▼ ESTUARY
- ▼ S1 - TAI O
- ▲ MARINA
- ▲ M1 - FUTURE TUNG CHUNG EAST
- ▲ M2 - GOLD COAST
- ECOLOGICAL/FISHERIES RESOURCES
- E1 - ARTIFICIAL REEFS AT NE AIRPORT
- E2 - YAM O WAN (MANGROVE, SEAGRASS & HORSESHOE CRAB HABITAT)
- E3 - SHAM SHUI KOK (CORAL HABITAT)
- E4 - THE BROTHERS (CORAL HABITAT)
- E5 - TAI HO WAN AND TAI HO STREAM SSSI (MANGROVE, SEAGRASS & HORSESHOE CRAB HABITAT)
- E6 - TUNG CHUNG EAST (CORAL HABITAT)
- E7 - TUNG CHUNG (CORAL HABITAT)
- E8 - TUNG CHUNG WAN AND SAN TAU BEACH SSSI (MANGROVE, SEAGRASS & HORSESHOE CRAB HABITAT)
- E9 - HAU HOK WAN (HORSESHOE CRAB HABITAT)
- E10 - SHA CHAU AND LUNG KWU CHAU MARINE PARK / LUNG KWU CHAU, TREE ISLAND AND SHA CHAU SSSI A
- E11 - SHA CHAU AND LUNG KWU CHAU MARINE PARK / LUNG KWU CHAU, TREE ISLAND AND SHA CHAU SSSI B
- E12 - LUNG KWU SHEUNG TAN (CORAL HABITAT)
- E13 - TSANG TSUI (CORAL & HORSESHOE CRAB HABITAT)
- E14 - AP TSAI HANG (MANGROVE, SEAGRASS & HORSESHOE CRAB HABITAT)
- E15 - PAK NAI SSSI AND SHEUNG PAK NAI (MANGROVE, SEAGRASS & HORSESHOE CRAB HABITAT)
- E16 - SHA LO WAN (HORSESHOE CRAB HABITAT)
- E17 - THE BROTHERS MARINE PARK
- E18 - FISHING/SPAWNING GROUNDS IN NORTH LANTAU
- E19 - ARTIFICIAL REEFS NEAR SHA CHAU
- E20 - SHAM WAT WAN (MANGROVE & HORSESHOE CRAB HABITAT)
- E21 - TAI O (HIGH PRODUCTION OF CAPTURE FISHERIES & MANGROVE HABITAT)
- E22 - YI O (MANGROVE & HORSESHOE CRAB HABITAT)
- E23 - POTENTIAL MARINE PARK / MARINE RESERVE FOR SOUTHWEST LANTAU
- E24 - MAI PO INNER DEEP BAY RAMSAR SITE / INNER DEEP BAY SSSI
- E25 - MAI PO MARSHES SSSI
- E26 - OYSTER CULTURE AREA
- EPD RIVER QUALITY MONITORING STATIONS
- TUEN MUN RIVER
- TN1
- TN2
- TN3
- TN4
- TN5
- TN6



PROJECT
 HUNG SHUI KIU NEW DEVELOPMENT AREA PLANNING AND ENGINEERING STUDY - INVESTIGATION

CLIENT
 業主

 土木工程拓展署 規劃署
 Civil Engineering and Development Department Planning Department

CONSULTANT
 工程顧問公司
 AECOM Asia Company Ltd.
 www.aecom.com

SUB-CONSULTANTS
 分判工程顧問公司

ISSUE/REVISION
 修訂

IR	DATE	DESCRIPTION	CHK

STATUS
 階段

SCALE
 比例
 A3 1:120000

DIMENSION UNIT
 尺寸單位
 METRES

KEY PLAN
 索引圖

PROJECT NO.
 項目編號
 60222570

AGREEMENT NO.
 協議編號
 CE2/2011 (CE)

SHEET TITLE
 圖號
 INDICATIVE LOCATIONS OF MARINE WATER SENSITIVE RECEIVERS AND OBSERVATION POINTS

SHEET NUMBER
 圖號
 60222570/TR19A/FIGURE 5.4

This drawing has been prepared for the use of AECOM's client. It may not be used, modified, reproduced or relied upon by third parties, except as agreed by AECOM or as required by law. AECOM accepts no responsibility, and denies any liability whatsoever, for any party that uses or relies on this drawing without AECOM's express written consent. Do not scale this document. All measurements must be obtained from the stated dimensions.