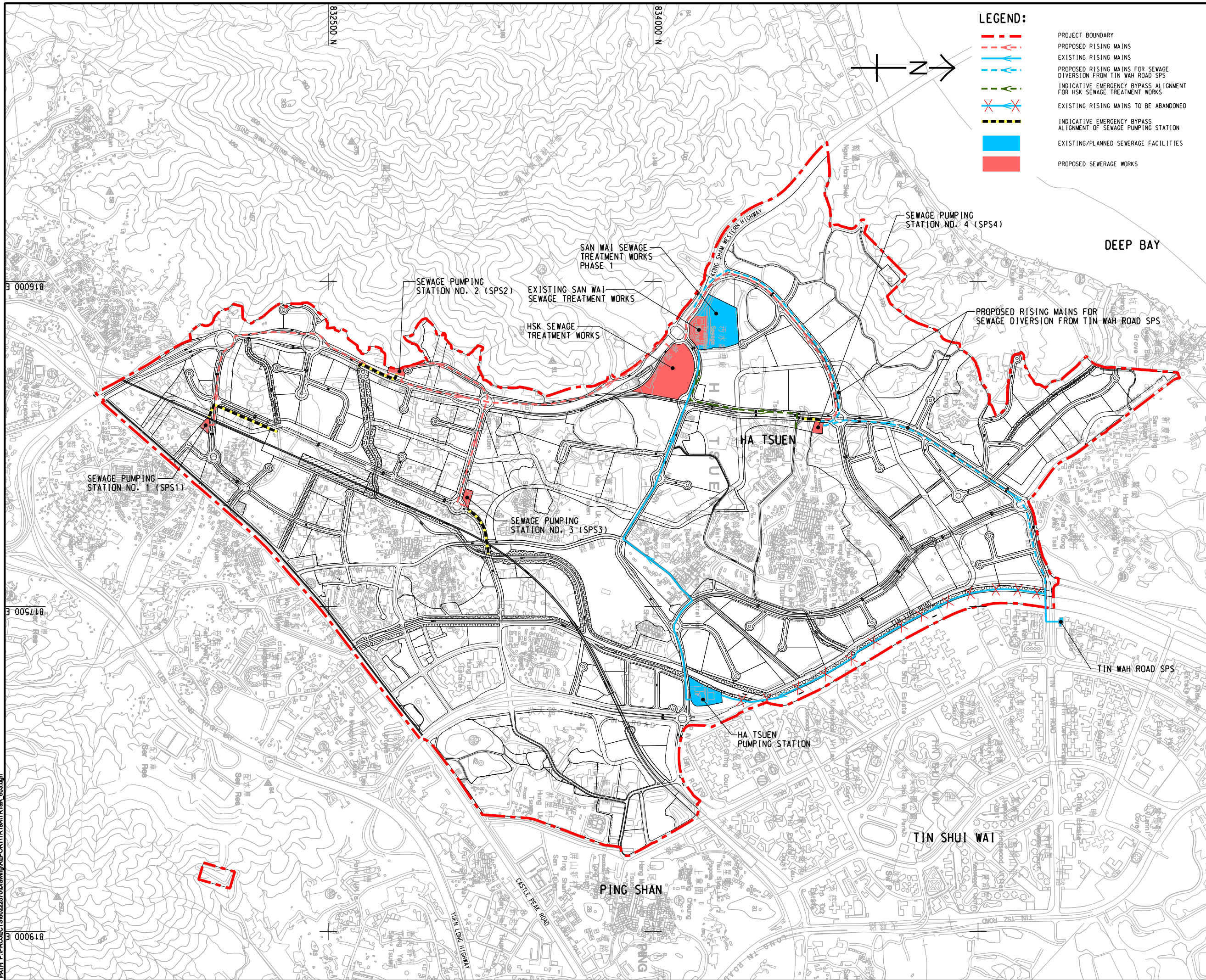


ISO A1 594mm x 841mm  
 Approved:  
 Checked:  
 Designer:  
 Project Management Initials:  
 Pld File by: ZENGFY  
 PATH: P:\PROJECTS\60222570\DRAWING\REPORT\TR19A\TR19A\_603.dgn  
 819000



**LEGEND:**

- - - PROJECT BOUNDARY
- - - PROPOSED RISING MAINS
- - - EXISTING RISING MAINS
- - - PROPOSED RISING MAINS FOR SEWAGE DIVERSION FROM TIN WAH ROAD SPS
- - - INDICATIVE EMERGENCY BYPASS ALIGNMENT FOR HSK SEWAGE TREATMENT WORKS
- X X EXISTING RISING MAINS TO BE ABANDONED
- - - INDICATIVE EMERGENCY BYPASS ALIGNMENT OF SEWAGE PUMPING STATION
- EXISTING/PLANNED SEWERAGE FACILITIES
- PROPOSED SEWERAGE WORKS



**PROJECT**  
**HUNG SHUI KIU NEW DEVELOPMENT AREA PLANNING AND ENGINEERING STUDY - INVESTIGATION**

**CLIENT**  
  
 土木工程拓展署 規劃署  
 Civil Engineering and Development Department Planning Department

**CONSULTANT**  
 工程顧問公司  
 AECOM Asia Company Ltd.  
 www.aecom.com

**SUB-CONSULTANTS**  
 分判工程顧問公司

**ISSUE/REVISION**  
 修訂

I/R	DATE	DESCRIPTION	CHK.

**STATUS**  
 圖版

**SCALE**  
 比例  
 A3 1 : 16000

**DIMENSION UNIT**  
 尺寸單位  
 METRES

**KEY PLAN**  
 索引圖

**PROJECT NO.**  
 項目編號  
 60222570

**AGREEMENT NO.**  
 協議編號  
 CE2/2011 (CE)

**SHEET TITLE**  
 圖紙標題  
 PROPOSED SEWERAGE NETWORK (MAIN LINE) FOR HSK NDA

**SHEET NUMBER**  
 圖紙編號  
 60222570/TR19A/FIGURE 6.3

This drawing has been prepared for the use of AECOM's client. It may not be used, modified, reproduced or relied upon by third parties, except as approved by AECOM or as required by law. AECOM accepts no responsibility, and denies any liability whatsoever, to any party that uses or relies on this drawing without AECOM's express written consent. Do not scale this document. All measurements must be obtained from the related dimensions.