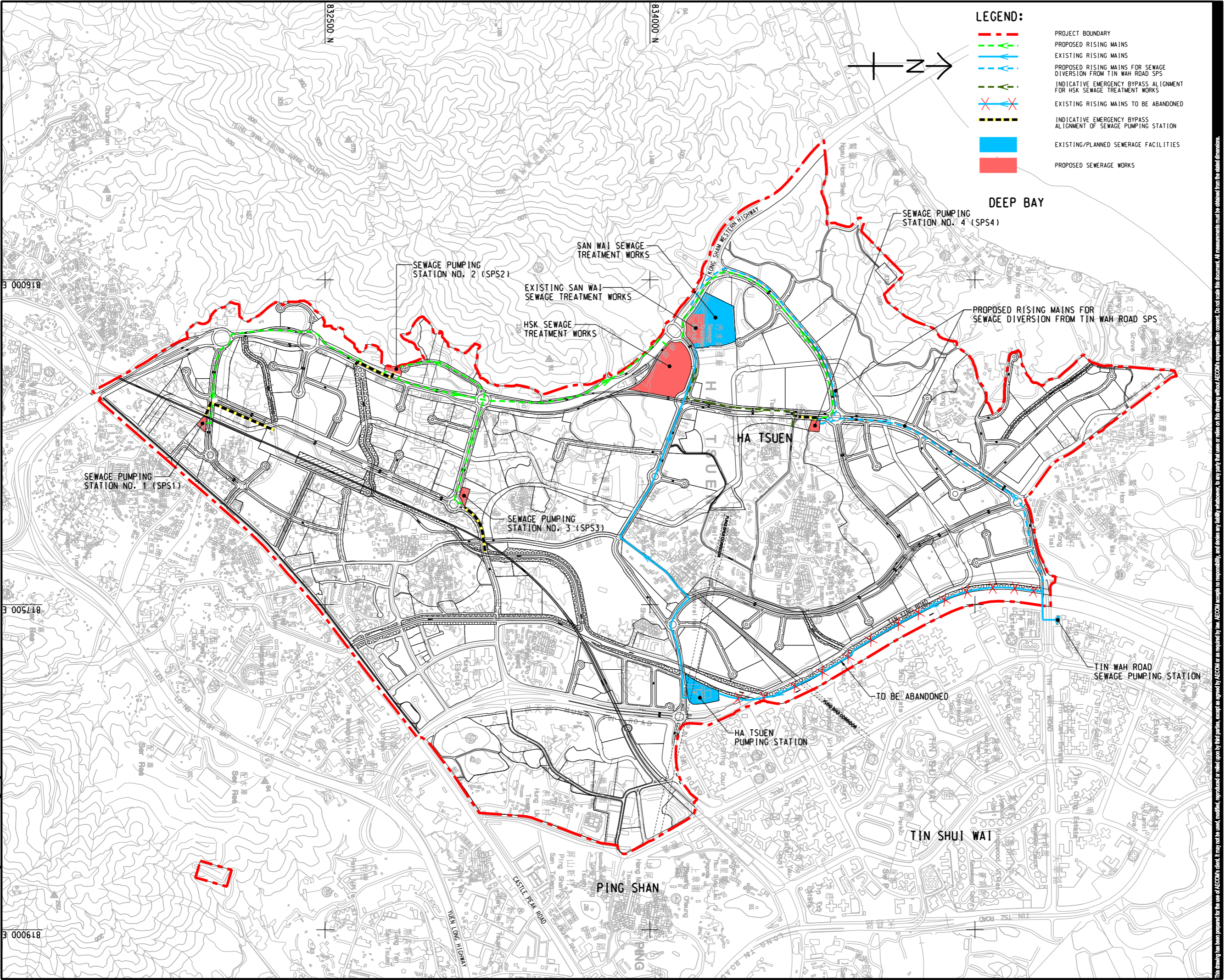


Pld File by: ZENGXF  
 PATH: P:\PROJECTS\60222570\DRAWING\REPORT\TR19A\TR19A\_606.dgn  
 Project Management Initials: 819000  
 Designer: 817500 E  
 Checked: 000918  
 Approved: ISO A1 594mm x 841mm



**LEGEND:**

- - - PROJECT BOUNDARY
- PROPOSED RISING MAINS
- EXISTING RISING MAINS
- - - PROPOSED RISING MAINS FOR SEWAGE DIVERSION FROM TIN WAH ROAD SPS
- - - INDICATIVE EMERGENCY BYPASS ALIGNMENT FOR HSK SEWAGE TREATMENT WORKS
- X X EXISTING RISING MAINS TO BE ABANDONED
- - - INDICATIVE EMERGENCY BYPASS ALIGNMENT OF SEWAGE PUMPING STATION
- EXISTING/PLANNED SEWERAGE FACILITIES
- PROPOSED SEWERAGE WORKS

**AECOM**

**PROJECT**  
**HUNG SHUI KIU NEW DEVELOPMENT AREA PLANNING AND ENGINEERING STUDY - INVESTIGATION**

**CLIENT**  
 CEDD  
 Civil Engineering and Development Department  
 土木工程拓展署  
 規劃署

**CONSULTANT**  
 AECOM Asia Company Ltd.  
 www.aecom.com

**SUB-CONSULTANTS**  
 分判工程顧問公司

**ISSUE/REVISION**

NO.	DATE	DESCRIPTION	CHK.

**STATUS**

**SCALE**  
 比例: A3 1 : 16000

**DIMENSION UNIT**  
 尺寸單位: METRES

**KEY PLAN**  
 索引圖

**PROJECT NO.**  
60222570

**AGREEMENT NO.**  
CE2/2011 (CE)

**SHEET TITLE**  
 PROPOSED SEWERAGE SYSTEM (MAIN LINE)  
 (PHASE B BY 2031)

**SHEET NUMBER**  
 60222570/TR19A/FIGURE 6.6

This drawing has been prepared for the use of AECOM's client. It may not be used, modified, reproduced or relied upon by third parties, except as approved by AECOM or as required by law. AECOM accepts no responsibility, and denies any liability whatsoever, for any party that uses or relies on this drawing without AECOM's express written consent. Do not scale this document. All measurements must be obtained from the related dimensions.