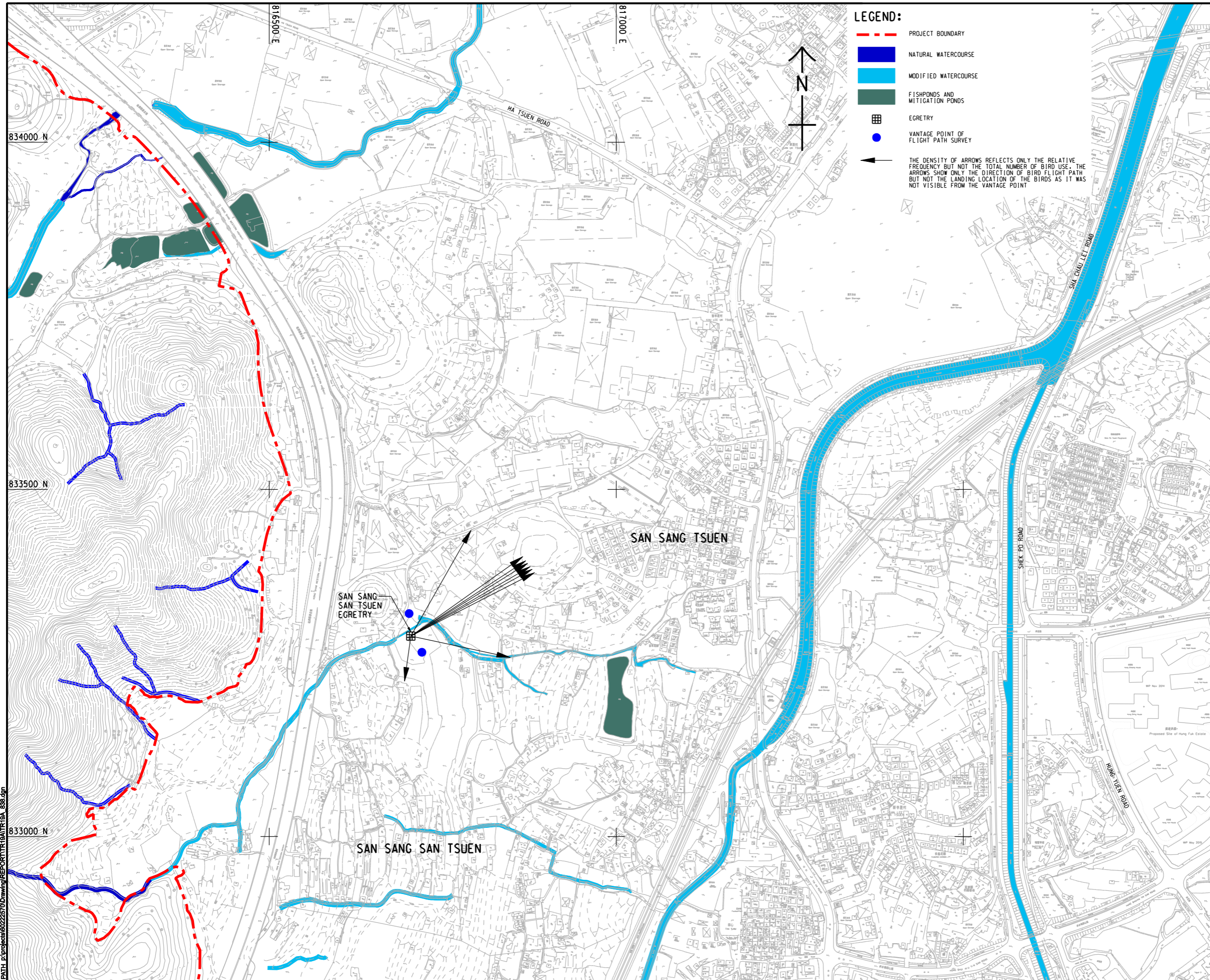


ISO A1 594mm x 841mm
 Approved:
 Checked:
 Designer:
 Project Management Initials:

Pld File by: ANH
 PATH: E:\projects\60222570\Drawings\REPORT\TR19A\TR19A_838.dgn



LEGEND:

- - - PROJECT BOUNDARY
- NATURAL WATERCOURSE
- MODIFIED WATERCOURSE
- FISHPONDS AND MITIGATION PONDS
- EGRETRY
- VANTAGE POINT OF FLIGHT PATH SURVEY
- ← THE DENSITY OF ARROWS REFLECTS ONLY THE RELATIVE FREQUENCY BUT NOT THE TOTAL NUMBER OF BIRD USE. THE ARROWS SHOW ONLY THE DIRECTION OF BIRD FLIGHT PATH BUT NOT THE LANDING LOCATION OF THE BIRDS AS IT WAS NOT VISIBLE FROM THE VANTAGE POINT

AECOM

PROJECT
 項目
HUNG SHUI KIU NEW DEVELOPMENT AREA PLANNING AND ENGINEERING STUDY - INVESTIGATION

CLIENT
 業主


 土木工程拓展署
 Civil Engineering and Development Department


 規劃署
 Planning Department

CONSULTANT
 工程顧問公司
 AECOM Asia Company Ltd.
 www.aecom.com

SUB-CONSULTANTS
 分判工程顧問公司

ISSUE/REVISION
 修訂

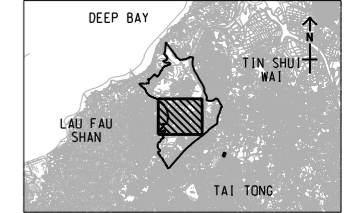
IR	DATE	DESCRIPTION	CHK

STATUS
 階段

SCALE
 比例
 A3 1 : 5000

DIMENSION UNIT
 尺寸單位
 METRES

KEY PLAN A3 1 : 300000
 索引圖



PROJECT NO.
 項目編號
 60222570

AGREEMENT NO.
 協議編號
 CE2/2011 (CE)

SHEET TITLE
 圖紙名稱
FLIGHT PATH OF ARDEIDS IN SAN SANG SAN TSUEN EGRETRY IN MAY 2016

SHEET NUMBER
 圖紙編號
 60222570/TR19A/FIGURE 9.4B

This drawing has been prepared for the use of AECOM's client. It may not be used, modified, reproduced or relied upon by third parties, except as approved by AECOM or as required by law. AECOM accepts no responsibility, and denies any liability whatsoever, to any party, for losses or claims on this drawing without AECOM's express written consent. Do not scale this document. All measurements must be obtained from the related dimensions.