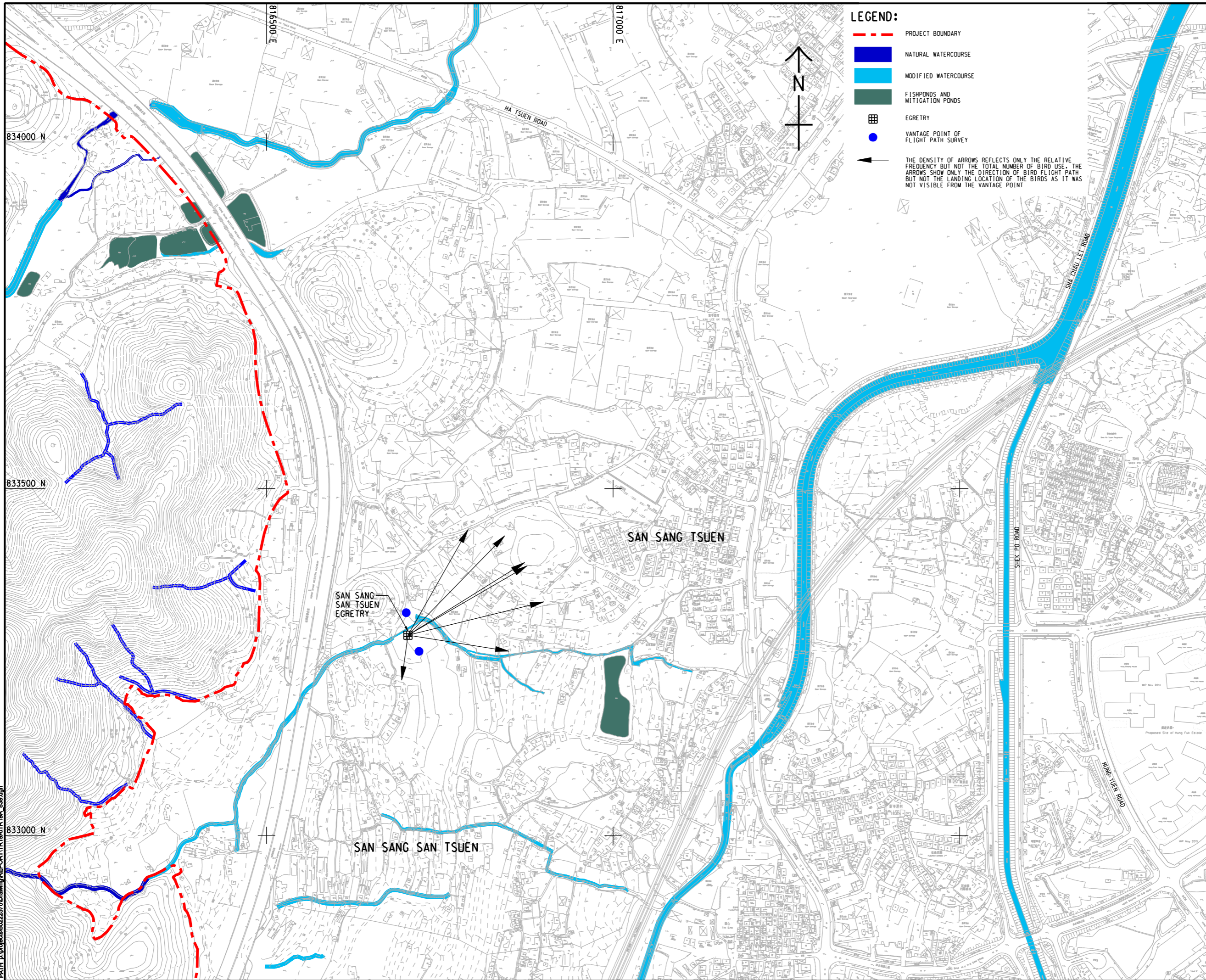


Pld File by: ANH; P:\projects\6022570\Drawings\REPORT\TR19A\TR19A\_838.dgn  
 Project Management Initials: Designer: Checked: Approved: ISO A1 594mm x 841mm



**LEGEND:**

- - - PROJECT BOUNDARY
- NATURAL WATERCOURSE
- MODIFIED WATERCOURSE
- FISHPONDS AND MITIGATION PONDS
- EGRETRY
- VANTAGE POINT OF FLIGHT PATH SURVEY
- ← THE DENSITY OF ARROWS REFLECTS ONLY THE RELATIVE FREQUENCY BUT NOT THE TOTAL NUMBER OF BIRD USE. THE ARROWS SHOW ONLY THE DIRECTION OF BIRD FLIGHT PATH BUT NOT THE LANDING LOCATION OF THE BIRDS AS IT WAS NOT VISIBLE FROM THE VANTAGE POINT

**AECOM**

**PROJECT**  
 HUNG SHUI KIU NEW DEVELOPMENT AREA PLANNING AND ENGINEERING STUDY - INVESTIGATION

**CLIENT**  
 CEDD  
 土木工程拓展署  
 Civil Engineering and Development Department

**CONSULTANT**  
 AECOM Asia Company Ltd.  
 www.aecom.com

**SUB-CONSULTANTS**  
 分判工程顧問公司

**ISSUE/REVISION**

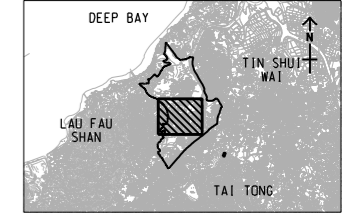
NO.	DATE	DESCRIPTION	CHK.

**STATUS**  
 現狀

**SCALE**  
 比例: A3 1 : 5000

**DIMENSION UNIT**  
 尺寸單位: METRES

**KEY PLAN** A3 1 : 300000



**PROJECT NO.**  
 項目編號: 60222570

**AGREEMENT NO.**  
 協議編號: CE2/2011 (CE)

**SHEET TITLE**  
 圖紙名稱: FLIGHT PATH OF ARDEIDS IN SAN SANG SAN TSUEN EGRETRY IN JUNE 2016

**SHEET NUMBER**  
 圖紙編號: 60222570/TR19A/FIGURE 9.4C

This drawing has been prepared for the use of AECOM's client. It may not be used, modified, reproduced or relied upon by third parties, except as agreed by AECOM or as required by law. AECOM accepts no responsibility, and denies any liability whatsoever, to any party, for losses or claims of any kind arising from this drawing without AECOM's express written consent. Do not scale this document. All measurements must be obtained from the related dimensions.