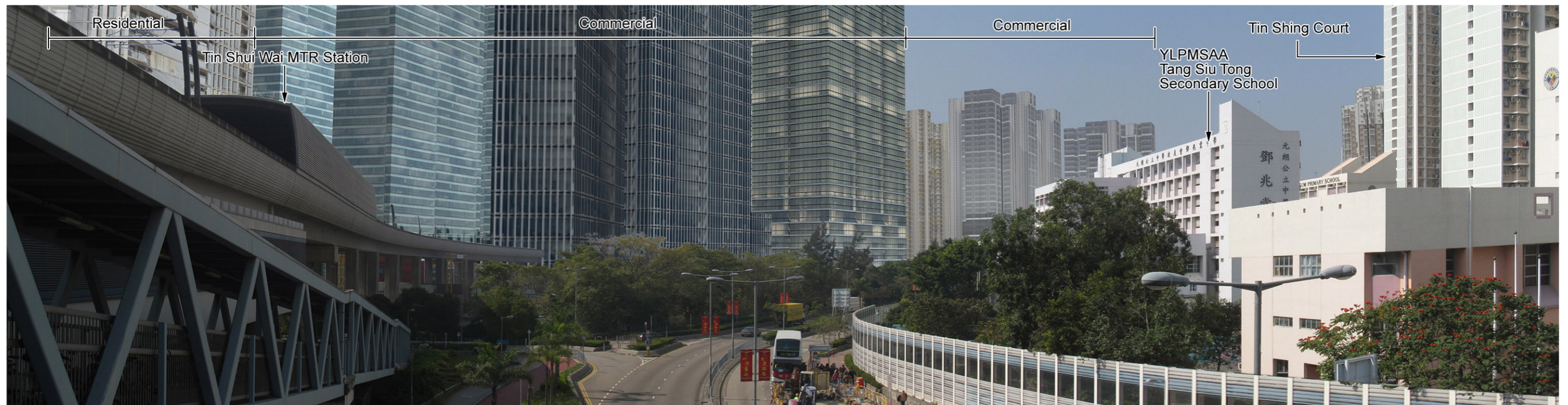


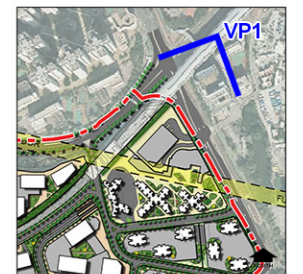


Existing Baseline Conditions



Proposed HSK Development without Mitigation at Day 1 (Operation Phase)

Note:  
 The photomontages illustrating views at Day 1 represent the commencement of Operation Phase for the entire HSK development, with and without mitigation measures.  
 The photomontages illustrating views at Year 10 of Operation Phase identify anticipated changes in mitigation measures from the Day 1 scenario.

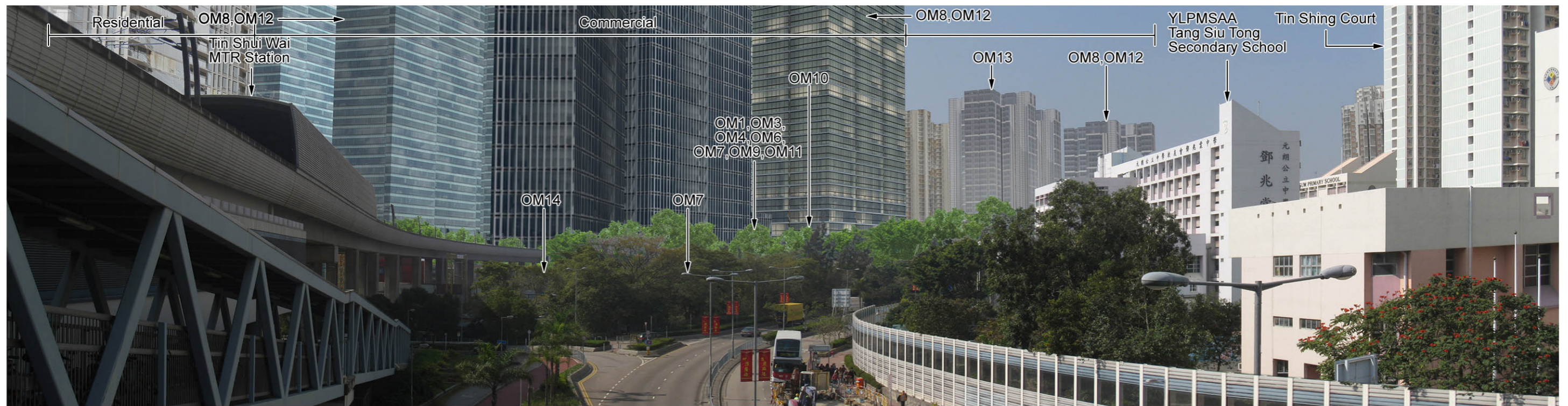


KEY PLAN

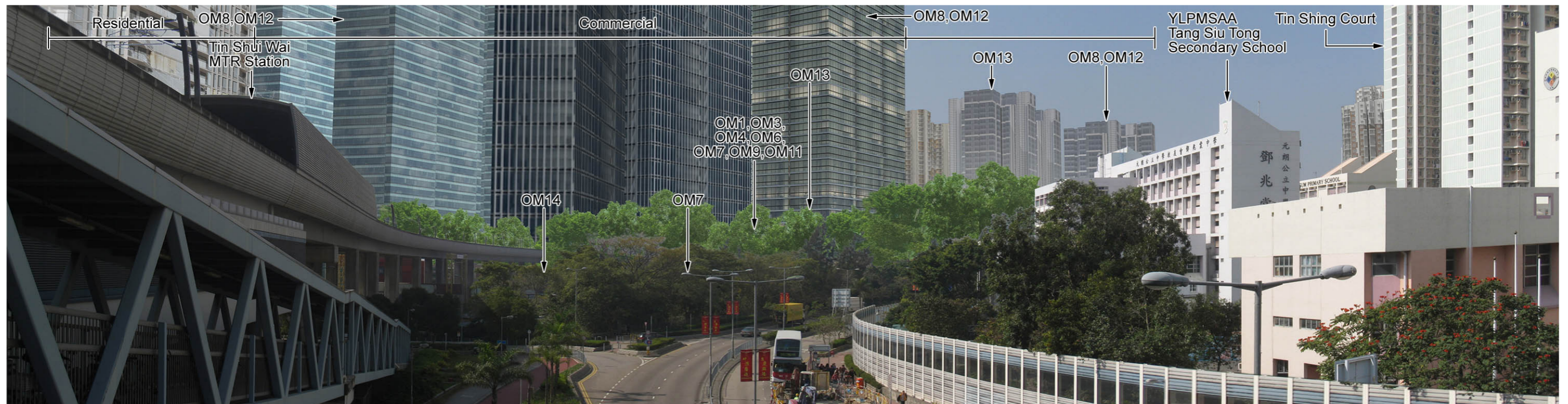


Agreement No. CE 2/2011 (CE)  
 Hung Shui Kiu New Development Area Planning and Engineering Study - Investigation  
**Photomontage 01 - View from Tin Shui Wai Elevated MTR Station, Exit B**

SCALE	N.T.S.	DATE	AUG 2016
CHECK	AM	DRAWN	LW
JOB No.	60222570	FIGURE	11.12a
		REV	



Proposed HSK Development with Mitigation at Day 1 (Operation Phase)



Proposed HSK Development with Mitigation at Year 10 (Operation Phase)

**Mitigation Measures**

**Construction Mitigation (CM)**

- CM1 - Minimised construction area and contractor's temporary works areas
- CM2 - Stripping and storing of topsoil
- CM3 - Protection of existing trees
- CM4 - Transplantation of existing trees where practical
- CM5 - Control of night-time lighting
- CM6 - Construction of decorative hoarding around construction works

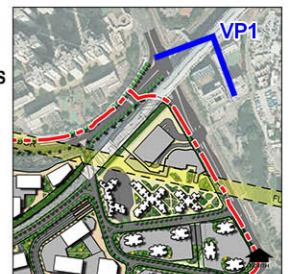
- CM7 - Reduction of construction period to practical minimum
- CM8 - Prevention of run-off
- CM9 - Phasing of construction stage
- CM10 - Advance screen planting
- CM11 - Minimise disturbance footprints
- CM12 - Protection of existing water courses
- CM13 - Hydroseeding on modified slopes
- CM14 - Integrate open space network with existing nullah conditions

**Operation Mitigation (OM)**

- OM1 - Compensatory tree planting where practical
- OM2 - Sensitive design of above-ground structures
- OM3 - Sensitive design of hardscape elements along roadsides
- OM4 - Reinstatement of streetscape elements
- OM5 - Visual softening via soft landscape elements
- OM6 - Quality greening along roadside amenity strips
- OM7 - Design of street lighting
- OM8 - Sensitive and chromatic treatment of architectural facades

- OM9 - Sensitive design of landscape areas
- OM10 - Sensitive design of vertical noise barriers and enclosures
- OM11 - Tree planting to site boundaries
- OM12 - Night time lighting
- OM13 - Green roofs and vertical greening
- OM14 - Greening of viaduct structures and noise barriers

Note: CM1 - CM14, and other mitigation measures not shown in these figures, are considered best practices throughout the entire NDA and should be implemented to the fullest extent possible.



**KEY PLAN**



Agreement No. CE 2/2011 (CE)  
Hung Shui Kiu New Development Area Planning and Engineering Study - Investigation  
**Photomontage 01 - View from Tin Shui Wai Elevated MTR Station, Exit B**

SCALE	N.T.S.	DATE	AUG 2016
CHECK	AM	DRAWN	LW
JOB No.	60222570	FIGURE	FIGURE 11.12b
		REV	

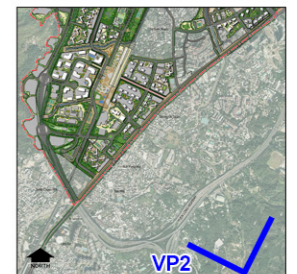


Existing Baseline Conditions



Proposed HSK Development without Mitigation at Day 1 (Operation Phase)

Note:  
 The photomontages illustrating views at Day 1 represent the commencement of Operation Phase for the entire HSK development, with and without mitigation measures.  
 The photomontages illustrating views at Year 10 of Operation Phase identify anticipated changes in mitigation measures from the Day 1 scenario.

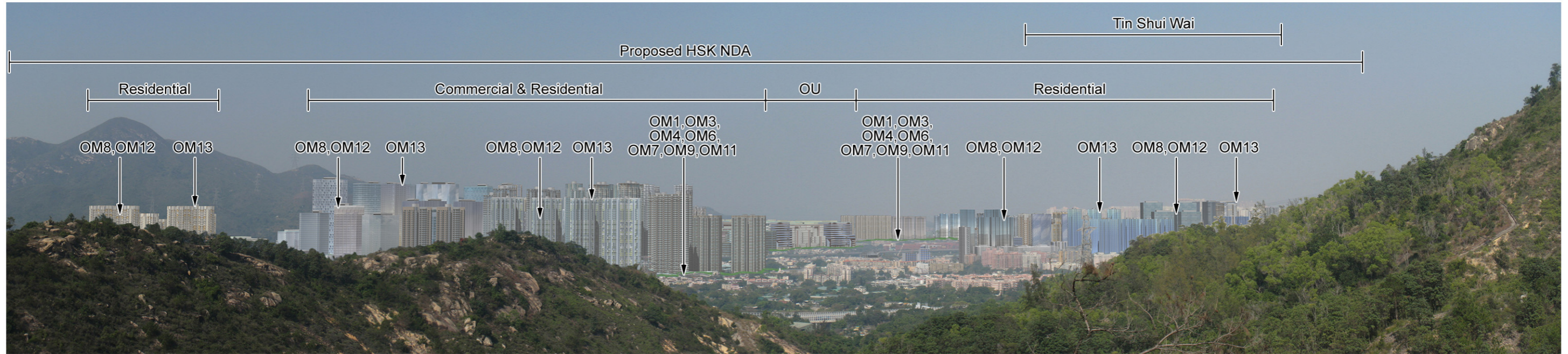


KEY PLAN

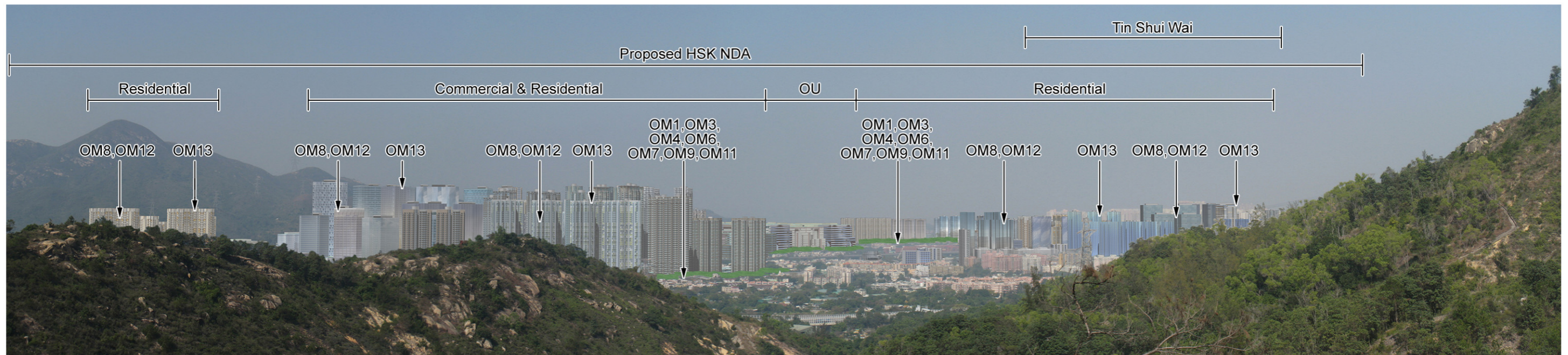


Agreement No. CE 2/2011 (CE)  
 Hung Shui Kiu New Development Area Planning and Engineering Study - Investigation  
**Photomontage 02 - View from Tai Lam Country Park**

SCALE	N.T.S.	DATE	AUG 2016
CHECK	AM	DRAWN	LW
JOB No.	60222570	FIGURE	11.13a
		REV	



Proposed HSK Development with Mitigation at Day 1 (Operation Phase)



Proposed HSK Development with Mitigation at Year 10 (Operation Phase)

**Mitigation Measures**

**Construction Mitigation (CM)**

- CM1 - Minimised construction area and contractor's temporary works areas
- CM2 - Stripping and storing of topsoil
- CM3 - Protection of existing trees
- CM4 - Transplantation of existing trees where practical
- CM5 - Control of night-time lighting
- CM6 - Construction of decorative hoarding around construction works

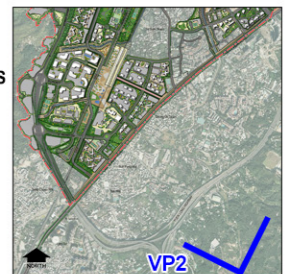
- CM7 - Reduction of construction period to practical minimum
- CM8 - Prevention of run-off
- CM9 - Phasing of construction stage
- CM10 - Advance screen planting
- CM11 - Minimise disturbance footprints
- CM12 - Protection of existing water courses
- CM13 - Hydroseeding on modified slopes
- CM14 - Integrate open space network with existing nullah conditions

**Operation Mitigation (OM)**

- OM1 - Compensatory tree planting where practical
- OM2 - Sensitive design of above-ground structures
- OM3 - Sensitive design of hardscape elements along roadsides
- OM4 - Reinstatement of streetscape elements
- OM5 - Visual softening via soft landscape elements
- OM6 - Quality greening along roadside amenity strips
- OM7 - Design of street lighting
- OM8 - Sensitive and chromatic treatment of architectural facades

- OM9 - Sensitive design of landscape areas
- OM10 - Sensitive design of vertical noise barriers and enclosures
- OM11 - Tree planting to site boundaries
- OM12 - Night time lighting
- OM13 - Green roofs and vertical greening
- OM14 - Greening of viaduct structures and noise barriers

Note: CM1 - CM14, and other mitigation measures not shown in these figures, are considered best practices throughout the entire NDA and should be implemented to the fullest extent possible.

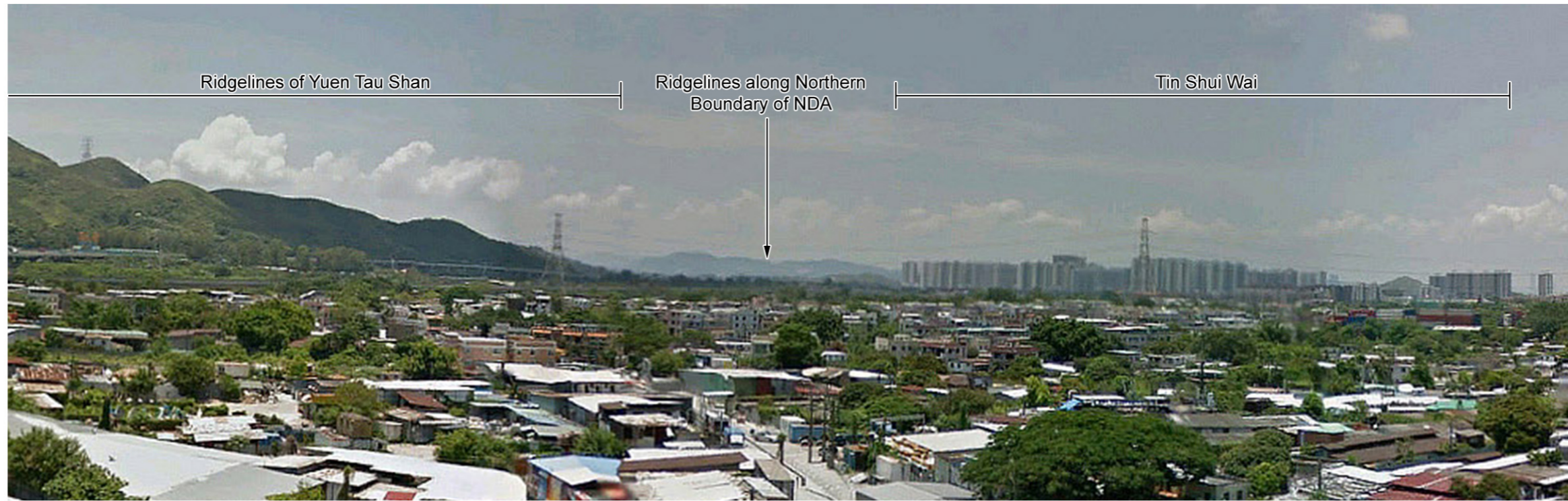


**KEY PLAN**



Agreement No. CE 2/2011 (CE)  
 Hung Shui Kiu New Development Area Planning and Engineering Study - Investigation  
**Photomontage 02 - View from Tai Lam Country Park**

SCALE	N.T.S.	DATE	AUG 2016
CHECK	AM	DRAWN	LW
JOB No.	60222570	FIGURE	FIGURE 11.13b
		REV	



Existing Baseline Conditions



Proposed HSK Development without Mitigation at Day 1 (Operation Phase)

Note:

The photomontages illustrating views at Day 1 represent the commencement of Operation Phase for the entire HSK development, with and without mitigation measures. The photomontages illustrating views at Year 10 of Operation Phase identify anticipated changes in mitigation measures from the Day 1 scenario.

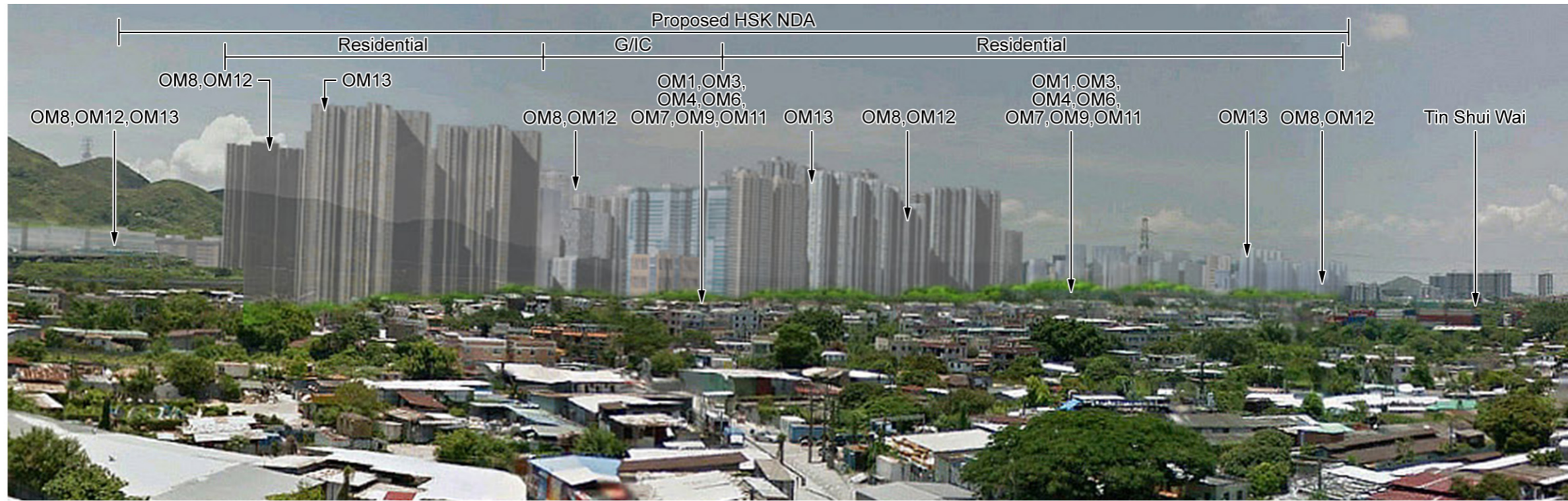


KEY PLAN

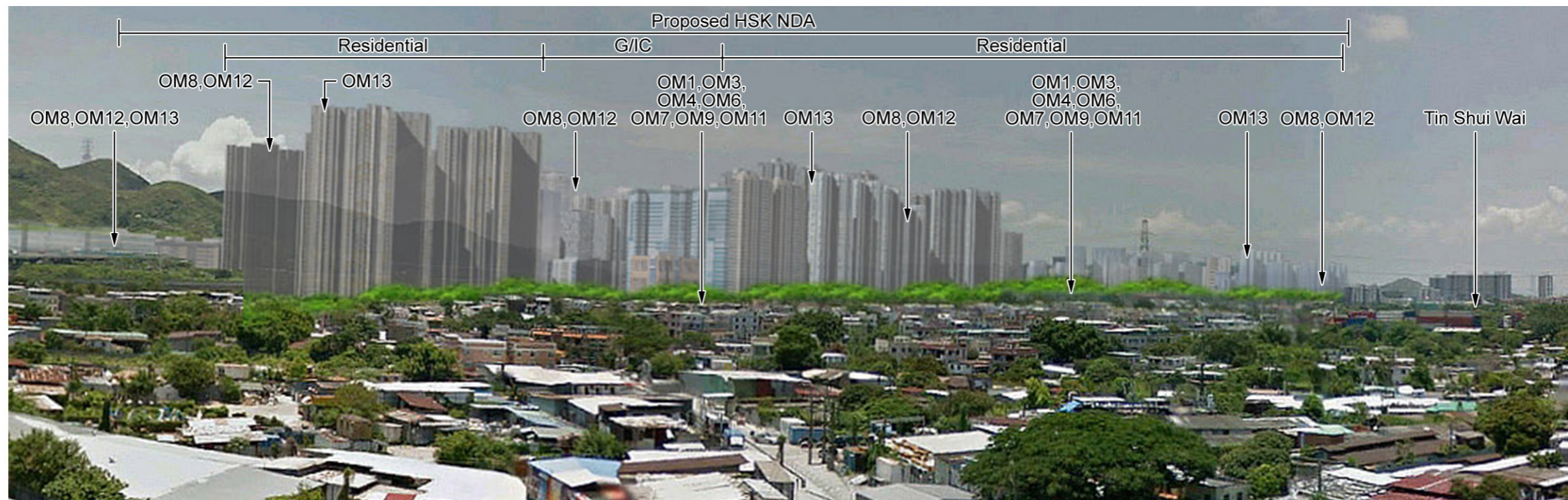


Agreement No. CE 2/2011 (CE)  
 Hung Shui Kiu New Development Area Planning and Engineering Study - Investigation  
**Photomontage 03 - View from Kong Sham Western Highway**

SCALE	N.T.S.	DATE	AUG 2016
CHECK	AM	DRAWN	LW
JOB No.	60222570	FIGURE	11.14a
		REV	



Proposed HSK Development with Mitigation at Day 1 (Operation Phase)



Proposed HSK Development with Mitigation at Year 10 (Operation Phase)

**Mitigation Measures**

**Construction Mitigation (CM)**

- CM1 - Minimised construction area and contractor's temporary works areas
- CM2 - Stripping and storing of topsoil
- CM3 - Protection of existing trees
- CM4 - Transplantation of existing trees where practical
- CM5 - Control of night-time lighting
- CM6 - Construction of decorative hoarding around construction works

- CM7 - Reduction of construction period to practical minimum
- CM8 - Prevention of run-off
- CM9 - Phasing of construction stage
- CM10 - Advance screen planting
- CM11 - Minimise disturbance footprints
- CM12 - Protection of existing water courses
- CM13 - Hydroseeding on modified slopes
- CM14 - Integrate open space network with existing nullah conditions

**Operation Mitigation (OM)**

- OM1 - Compensatory tree planting where practical
- OM2 - Sensitive design of above-ground structures
- OM3 - Sensitive design of hardscape elements along roadsides
- OM4 - Reinstatement of streetscape elements
- OM5 - Visual softening via soft landscape elements
- OM6 - Quality greening along roadside amenity strips
- OM7 - Design of street lighting
- OM8 - Sensitive and chromatic treatment of architectural facades

- OM9 - Sensitive design of landscape areas
- OM10 - Sensitive design of vertical noise barriers and enclosures
- OM11 - Tree planting to site boundaries
- OM12 - Night time lighting
- OM13 - Green roofs and vertical greening
- OM14 - Greening of viaduct structures and noise barriers

Note: CM1 - CM14, and other mitigation measures not shown in these figures, are considered best practices throughout the entire NDA and should be implemented to the fullest extent possible.



**KEY PLAN**



Agreement No. CE 2/2011 (CE)  
 Hung Shui Kiu New Development Area Planning and Engineering Study - Investigation  
**Photomontage 03 - View from Kong Sham Western Highway**

SCALE	N.T.S.	DATE	AUG 2016
CHECK	AM	DRAWN	LW
JOB No.	60222570	FIGURE	FIGURE 11.14b
		REV	

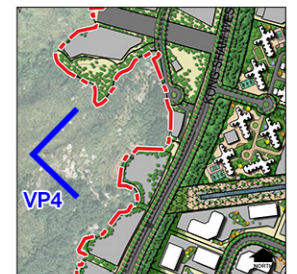


Existing Baseline Conditions



Proposed HSK Development without Mitigation at Day 1 (Operation Phase)

Note:  
 The photomontages illustrating views at Day 1 represent the commencement of Operation Phase for the entire HSK development, with and without mitigation measures.  
 The photomontages illustrating views at Year 10 of Operation Phase identify anticipated changes in mitigation measures from the Day 1 scenario.

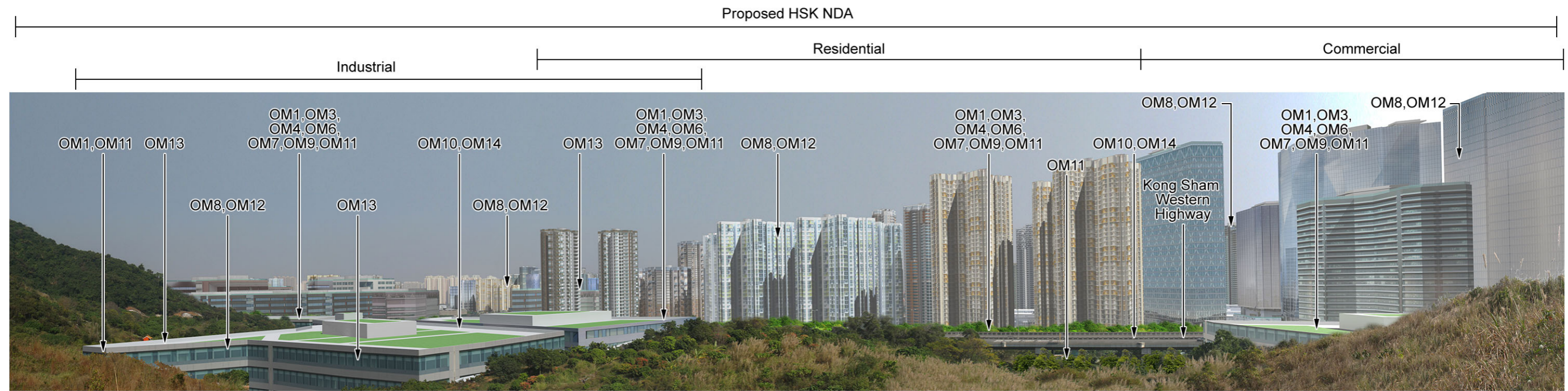


KEY PLAN

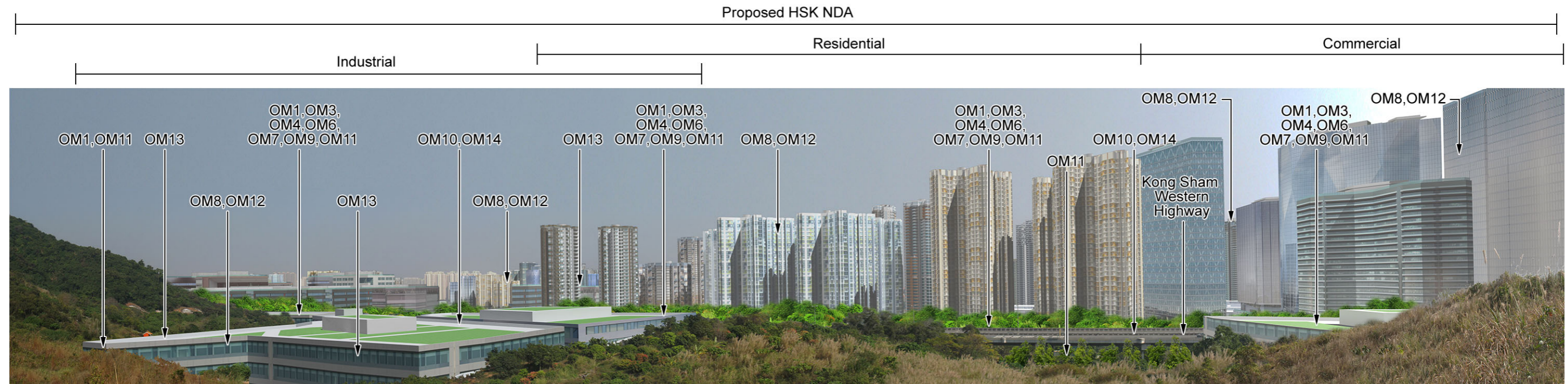


Agreement No. CE 2/2011 (CE)  
 Hung Shui Kiu New Development Area Planning and Engineering Study - Investigation  
**Photomontage 04 - View from Yuen Tau Shan**

SCALE	N.T.S.	DATE	AUG 2016
CHECK	AM	DRAWN	LW
JOB No.	60222570	FIGURE	11.15a
		REV	



Proposed HSK Development with Mitigation at Day 1 (Operation Phase)



Proposed HSK Development with Mitigation at Year 10 (Operation Phase)

**Mitigation Measures**

**Construction Mitigation (CM)**

- CM1 - Minimised construction area and contractor's temporary works areas
- CM2 - Stripping and storing of topsoil
- CM3 - Protection of existing trees
- CM4 - Transplantation of existing trees where practical
- CM5 - Control of night-time lighting
- CM6 - Construction of decorative hoarding around construction works

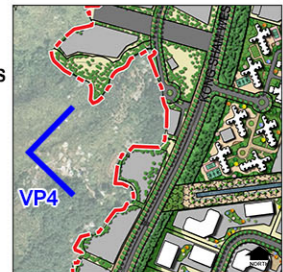
- CM7 - Reduction of construction period to practical minimum
- CM8 - Prevention of run-off
- CM9 - Phasing of construction stage
- CM10 - Advance screen planting
- CM11 - Minimise disturbance footprints
- CM12 - Protection of existing water courses
- CM13 - Hydroseeding on modified slopes
- CM14 - Integrate open space network with existing nullah conditions

**Operation Mitigation (OM)**

- OM1 - Compensatory tree planting where practical
- OM2 - Sensitive design of above-ground structures
- OM3 - Sensitive design of hardscape elements along roadsides
- OM4 - Reinstatement of streetscape elements
- OM5 - Visual softening via soft landscape elements
- OM6 - Quality greening along roadside amenity strips
- OM7 - Design of street lighting
- OM8 - Sensitive and chromatic treatment of architectural facades

- OM9 - Sensitive design of landscape areas
- OM10 - Sensitive design of vertical noise barriers and enclosures
- OM11 - Tree planting to site boundaries
- OM12 - Night time lighting
- OM13 - Green roofs and vertical greening
- OM14 - Greening of viaduct structures and noise barriers

Note: CM1 - CM14, and other mitigation measures not shown in these figures, are considered best practices throughout the entire NDA and should be implemented to the fullest extent possible.



**KEY PLAN**



Agreement No. CE 2/2011 (CE)  
Hung Shui Kiu New Development Area Planning and Engineering Study - Investigation

**Photomontage 04 - View from Yuen Tau Shan**

SCALE	N.T.S.	DATE	AUG 2016
CHECK	AM	DRAWN	LW
JOB No.	60222570	FIGURE	FIGURE 11.15b
		REV	





Existing Baseline Conditions

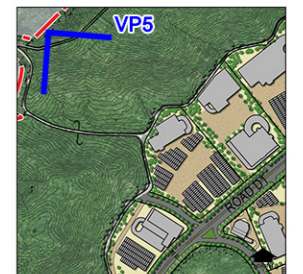
Port Back-up, Storage & Workshop Uses



Proposed HSK Development without Mitigation at Day 1 (Operation Phase)

Note:

The photomontages illustrating views at Day 1 represent the commencement of Operation Phase for the entire HSK development, with and without mitigation measures. The photomontages illustrating views at Year 10 of Operation Phase identify anticipated changes in mitigation measures from the Day 1 scenario.



KEY PLAN

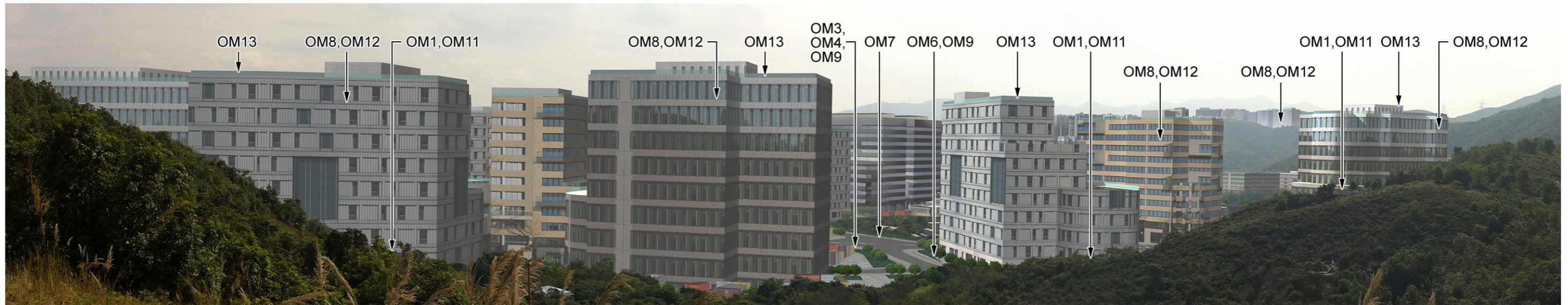


Agreement No. CE 2/2011 (CE)  
 Hung Shui Kiu New Development Area Planning and Engineering Study - Investigation  
**Photomontage 05 - View from Ngau Hom Shek Hiking Trail**

SCALE	N.T.S.	DATE	AUG 2016
CHECK	AM	DRAWN	LW
JOB No.	60222570	FIGURE	11.16a
		REV	

Port Back-up, Storage & Workshop Uses

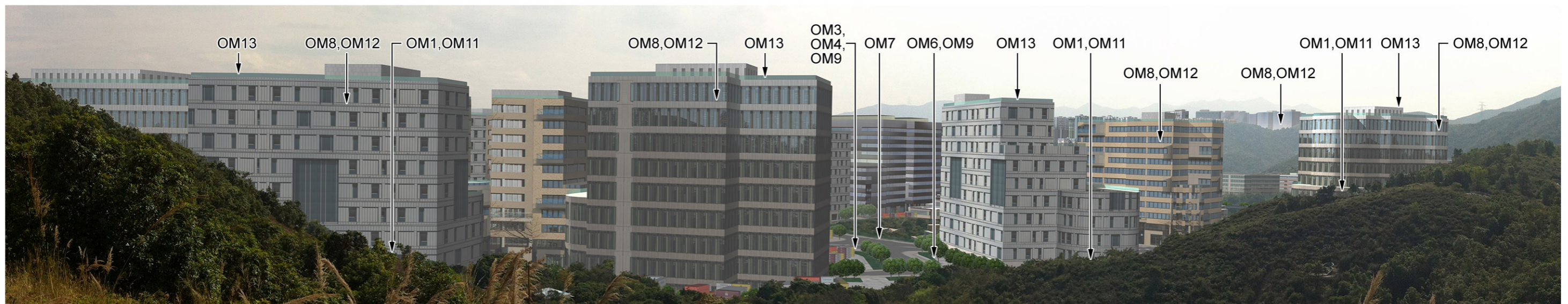
Proposed HSK NDA



Proposed HSK Development with Mitigation at Day 1 (Operation Phase)

Port Back-up, Storage & Workshop Uses

Proposed HSK NDA



Proposed HSK Development with Mitigation at Year 10 (Operation Phase)

**Mitigation Measures**

**Construction Mitigation (CM)**

- CM1 - Minimised construction area and contractor's temporary works areas
- CM2 - Stripping and storing of topsoil
- CM3 - Protection of existing trees
- CM4 - Transplantation of existing trees where practical
- CM5 - Control of night-time lighting
- CM6 - Construction of decorative hoarding around construction works

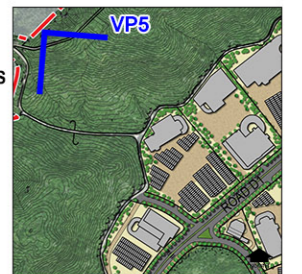
- CM7 - Reduction of construction period to practical minimum
- CM8 - Prevention of run-off
- CM9 - Phasing of construction stage
- CM10 - Advance screen planting
- CM11 - Minimise disturbance footprints
- CM12 - Protection of existing water courses
- CM13 - Hydroseeding on modified slopes
- CM14 - Integrate open space network with existing nullah conditions

**Operation Mitigation (OM)**

- OM1 - Compensatory tree planting where practical
- OM2 - Sensitive design of above-ground structures
- OM3 - Sensitive design of hardscape elements along roadsides
- OM4 - Reinstatement of streetscape elements
- OM5 - Visual softening via soft landscape elements
- OM6 - Quality greening along roadside amenity strips
- OM7 - Design of street lighting
- OM8 - Sensitive and chromatic treatment of architectural facades

- OM9 - Sensitive design of landscape areas
- OM10 - Sensitive design of vertical noise barriers and enclosures
- OM11 - Tree planting to site boundaries
- OM12 - Night time lighting
- OM13 - Green roofs and vertical greening
- OM14 - Greening of viaduct structures and noise barriers

Note: CM1 - CM14, and other mitigation measures not shown in these figures, are considered best practices throughout the entire NDA and should be implemented to the fullest extent possible.

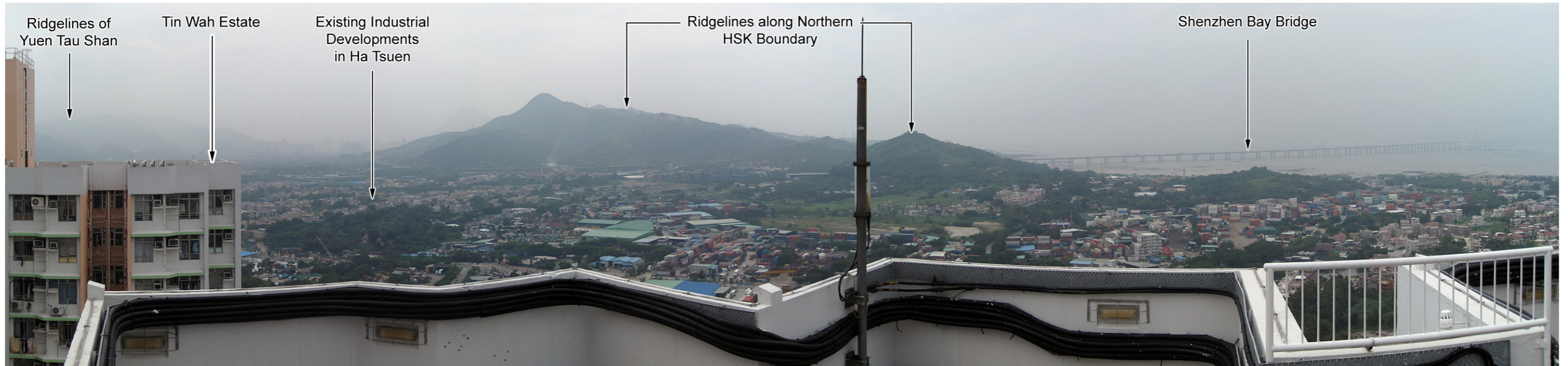


**KEY PLAN**

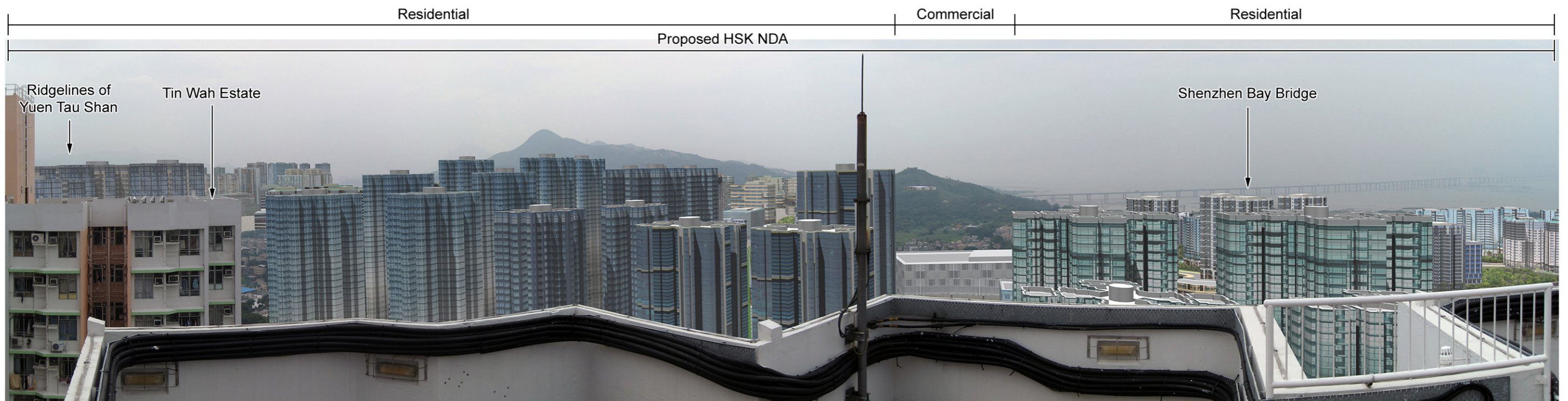


Agreement No. CE 2/2011 (CE)  
 Hung Shui Kiu New Development Area Planning and Engineering Study - Investigation  
**Photomontage 05 - View from Ngau Hom Shek Hiking Trail**

SCALE	N.T.S.	DATE	AUG 2016
CHECK	AM	DRAWN	LW
JOB No.	60222570	FIGURE	11.16b
		REV	

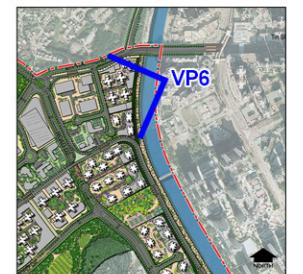


Existing Baseline Conditions



Proposed HSK Development without Mitigation at Day 1 (Operation Phase)

Note:  
 The photomontages illustrating views at Day 1 represent the commencement of Operation Phase for the entire HSK development, with and without mitigation measures.  
 The photomontages illustrating views at Year 10 of Operation Phase identify anticipated changes in mitigation measures from the Day 1 scenario.

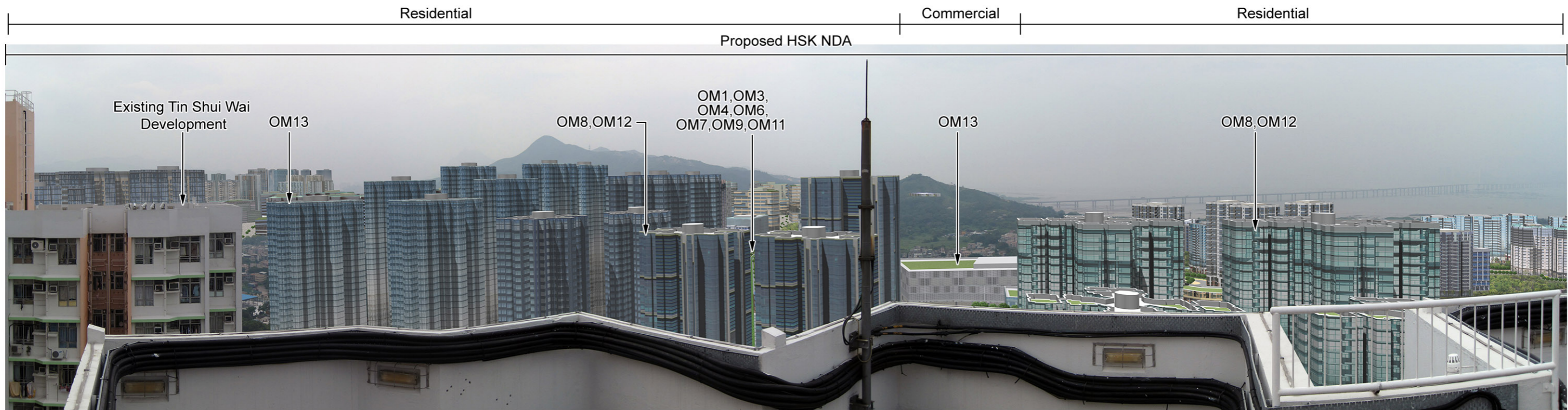


KEY PLAN

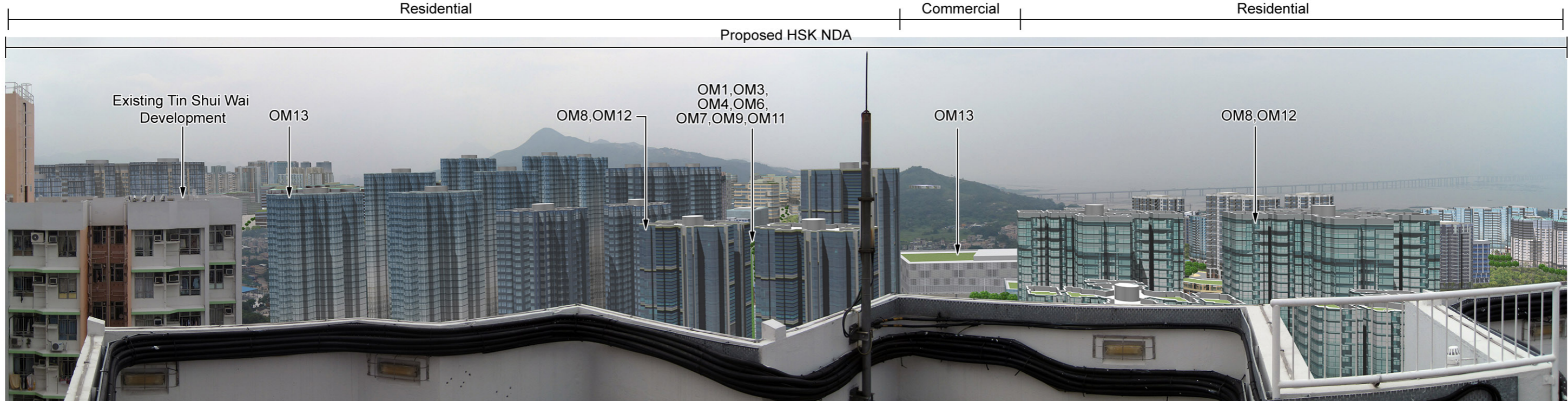


Agreement No. CE 2/2011 (CE)  
 Hung Shui Kiu New Development Area Planning and Engineering Study - Investigation  
**Photomontage 06 - View from Tin Wah Estate Roof Top**

SCALE	N.T.S.	DATE	AUG 2016
CHECK	AM	DRAWN	LW
JOB No.	60222570	FIGURE	11.17a
		REV	



Proposed HSK Development with Mitigation at Day 1 (Operation Phase)



Proposed HSK Development with Mitigation at Year 10 (Operation Phase)

**Mitigation Measures**

**Construction Mitigation (CM)**

- CM1 - Minimised construction area and contractor's temporary works areas
- CM2 - Stripping and storing of topsoil
- CM3 - Protection of existing trees
- CM4 - Transplantation of existing trees where practical
- CM5 - Control of night-time lighting
- CM6 - Construction of decorative hoarding around construction works

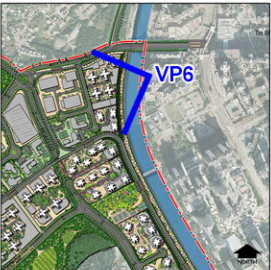
- CM7 - Reduction of construction period to practical minimum
- CM8 - Prevention of run-off
- CM9 - Phasing of construction stage
- CM10 - Advance screen planting
- CM11 - Minimise disturbance footprints
- CM12 - Protection of existing water courses
- CM13 - Hydroseeding on modified slopes
- CM14 - Integrate open space network with existing nullah conditions

**Operation Mitigation (OM)**

- OM1 - Compensatory tree planting where practical
- OM2 - Sensitive design of above-ground structures
- OM3 - Sensitive design of hardscape elements along roadsides
- OM4 - Reinstatement of streetscape elements
- OM5 - Visual softening via soft landscape elements
- OM6 - Quality greening along roadside amenity strips
- OM7 - Design of street lighting
- OM8 - Sensitive and chromatic treatment of architectural facades

- OM9 - Sensitive design of landscape areas
- OM10 - Sensitive design of vertical noise barriers and enclosures
- OM11 - Tree planting to site boundaries
- OM12 - Night time lighting
- OM13 - Green roofs and vertical greening
- OM14 - Greening of viaduct structures and noise barriers

Note: CM1 - CM14, and other mitigation measures not shown in these figures, are considered best practices throughout the entire NDA and should be implemented to the fullest extent possible.



**KEY PLAN**



Agreement No. CE 2/2011 (CE)  
 Hung Shui Kiu New Development Area Planning and Engineering Study - Investigation  
**Photomontage 06 - View from Tin Wah Estate Roof Top**

SCALE	N.T.S.	DATE	AUG 2016
CHECK	AM	DRAWN	LW
JOB No.	60222570	FIGURE	11.17b
		REV	