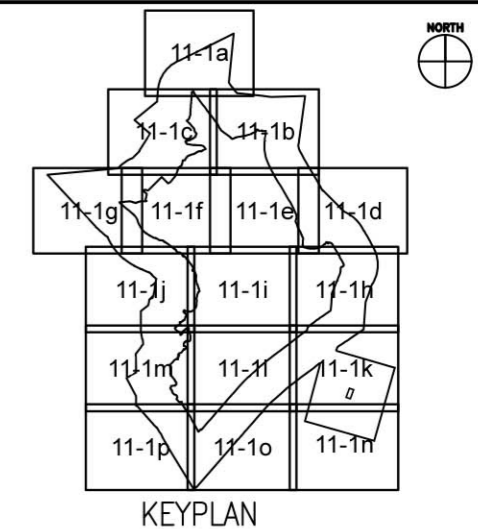
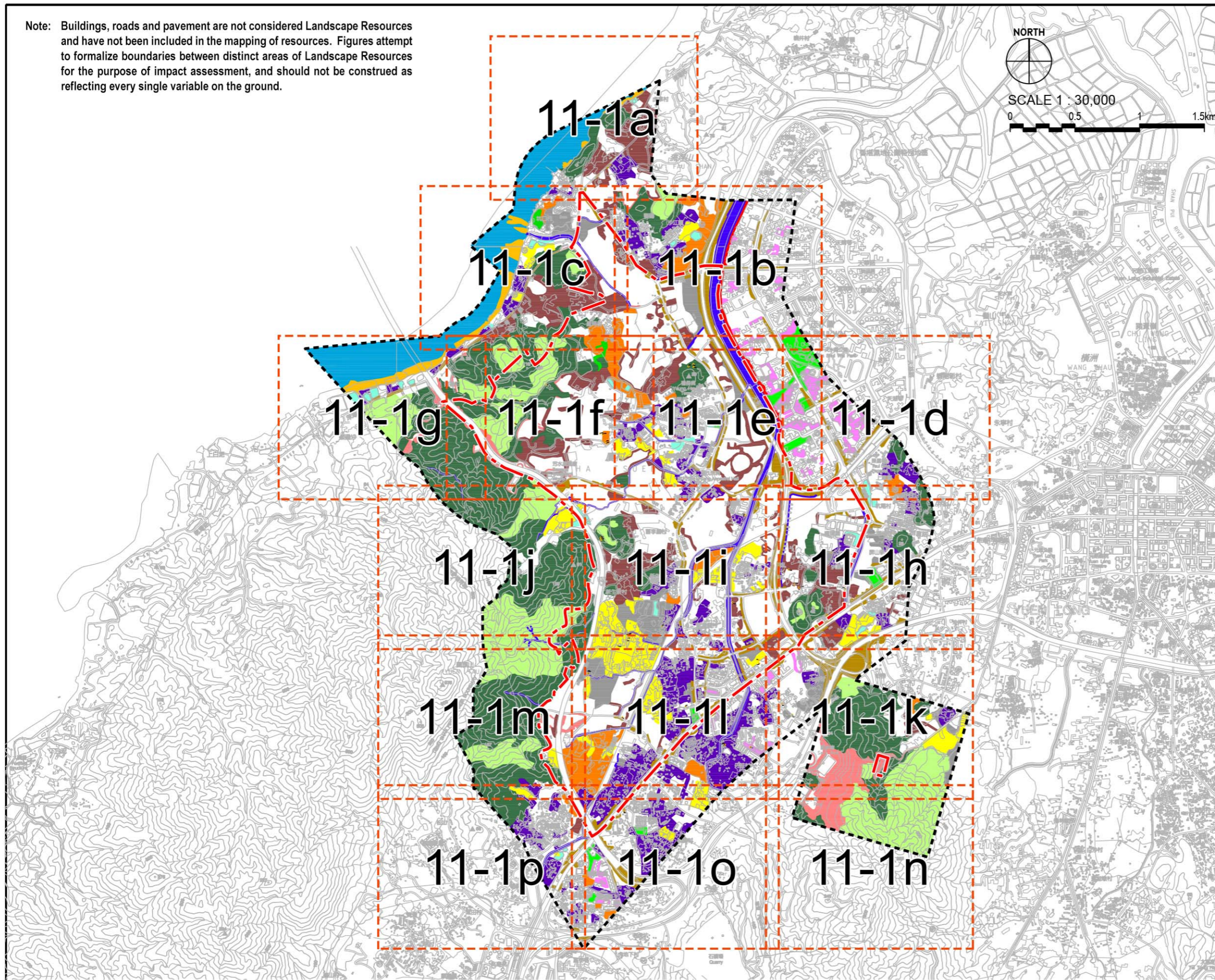


Note: Buildings, roads and pavement are not considered Landscape Resources and have not been included in the mapping of resources. Figures attempt to formalize boundaries between distinct areas of Landscape Resources for the purpose of impact assessment, and should not be construed as reflecting every single variable on the ground.



LEGEND

- 500m Assessment Area Boundary
- - - Project Boundary

| | |
|--|--|
| | LR1 COASTAL WATERS & MUDFLATS = 626,041 SQM |
| | LR2 HILLSIDE WOODLAND = 2,724,784 SQM |
| | LR3 HILLSIDE SHRUB & GRASSLAND = 1,318,763 SQM |
| | LR4 LOW-LYING WOODLAND/PLANTATION = 359,258 SQ.M |
| | LR5 LOW-LYING SHRUB & GRASSLAND = 406,307 SQ.M |
| | LR6 VEGETATION ON AGRICULTURAL LAND = 528,982 SQM |
| | LR7 VEGETATION WITHIN RESIDENTIAL DEVELOPMENTS = 193,841 SQM |
| | LR8 VEGETATION WITHIN RURAL VILLAGE = 1,101,782 SQM |
| | LR9 VEGETATION WITHIN INDUSTRIAL LAND & OPEN STORAGE = 1,063,691 SQM |
| | LR10 WATERCOURSE = 284,738 SQ.M |
| | LR11 VEGETATION WITHIN URBAN PARKS = 117,737 SQM |
| | LR12 VEGETATION ON MODIFIED SLOPES = 286,152 SQM |
| | LR13 VEGETATION ALONG TIN SHUI WAI PROMENADE = 43,546 SQM |
| | LR14 ROADSIDE VEGETATION = 449,637 SQM |
| | LR15 WATERBODIES = 68,661 SQ.M |
| | LR16 MANGROVES = 110,582 SQM |
| | LR17 MARSH = 14,981 SQM |
| | LR18 IMPORTANT TREE = 91 NOS. |



Agreement No. CE 2/2011 (CE)
 Hung Shui Kiu New Development Area Planning and Engineering Study - Investigation
Landscape Resources

| | | | |
|---------|-------------|-------------|----------|
| SCALE | 1:30,000@A3 | DATE | JUL 2016 |
| CHECK | AM | DRAWN | LW |
| JOB No. | 60222570 | FIGURE 11.1 | REV |