

Occupational VSRs	
O-1	Teachers and Students at Shung Tak Catholic English College
O-2	Workers at Multiwin Logistics
O-3	Workers at Lam Tei Quarry
O-4	Teachers and Students at Madam Lau Kam Lung Secondary School
O-5	Teachers and Students at Hing Tak School
O-6	Teachers and Students at WF Joseph Lee Primary School, Heung Tao Middle School and Pansy Ho Activity Centre
O-7	Teachers and Students at Po Kok Branch School
O-8	Workers at Tai Fat Tsuen
O-9	Teachers and Students at Ho Dao College
O-10	Teachers and Students at VTC Youth College, Yan Chai Hospital Nina Lam Kindergarten and Pui Shing Catholic Secondary School
O-11	Teachers and Students at Caritas Lok Kan School and TWGHs Leo Tung-Hai Lee Primary School
O-12	Teachers and Students at Yau Tze Tin Memorial College
O-13	Workers at North West New Territories Refuse Transfer Station
O-14	Workers on Oyster Farms in Deep Bay
O-15	Workers at Power Station Located near Black Point (Lan Kok Tsui)
O-16	Students and Teachers at Lingnan University
O-17	Workers at Tai Hing Commercial Complex
O-18	Workers and Patients at Tuen Mun Hospital
O-19	Workers and Patients at Castle Peak Hospital
O-20	Workers in Industrial Area of Ping Shan
O-21	Workers in Industrial Area North of Yuen Long
O-22	Workers in Industrial Area of Ha Tsuen
O-23	Workers in Tung Tau Industrial Area

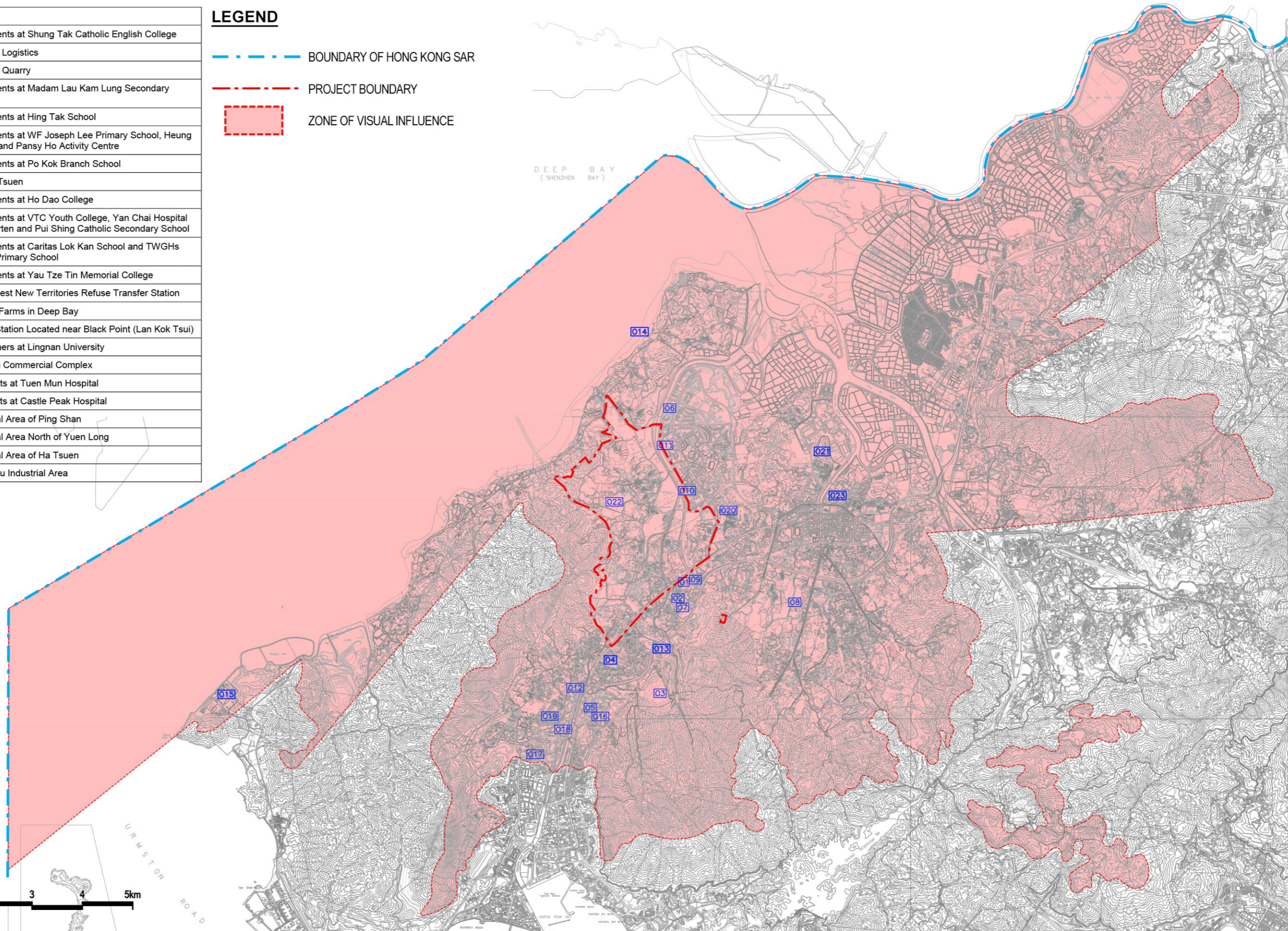
**LEGEND**

- - - - - BOUNDARY OF HONG KONG SAR
- - - - - PROJECT BOUNDARY
- ZONE OF VISUAL INFLUENCE

DEEP BAY  
( SHENZHEN BAY )



SCALE 1 : 75,000



Agreement No. CE 2/2011 (CE)  
Hung Shui Kiu New Development Area Planning and Engineering Study - Investigation  
**Visual Influence - Occupational VSRs**

SCALE	1:75,000@A3	DATE	JUL 2016
CHECK	AM	DRAWN	LW
JOB No.	60222570	DRAWING No.	FIGURE 11.10
		REV	