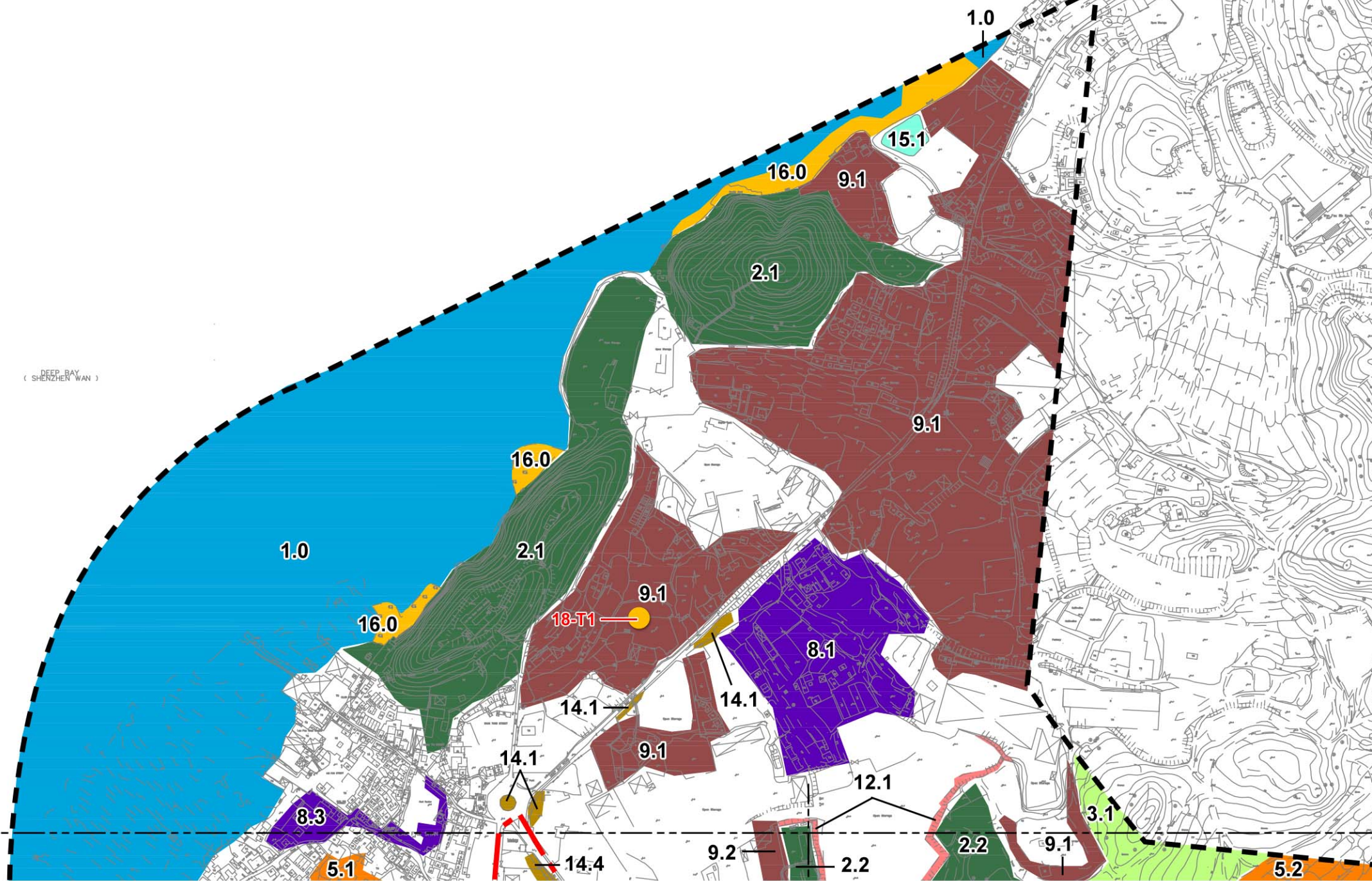
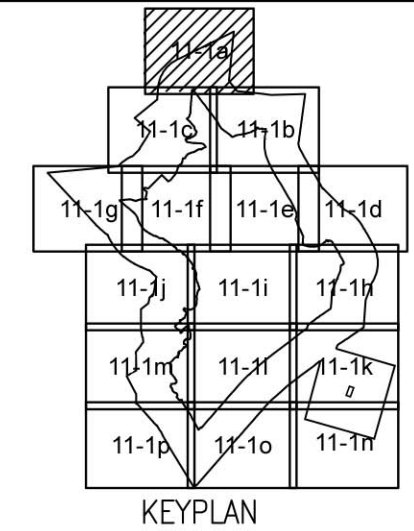


Note: Buildings, roads and pavement are not considered Landscape Resources and have not been included in the mapping of resources. Figures attempt to formalize boundaries between distinct areas of Landscape Resources for the purpose of impact assessment, and should not be construed as reflecting every single variable on the ground.

DEEP BAY
(SHENZHEN WAN)



SCALE 1 : 5,000



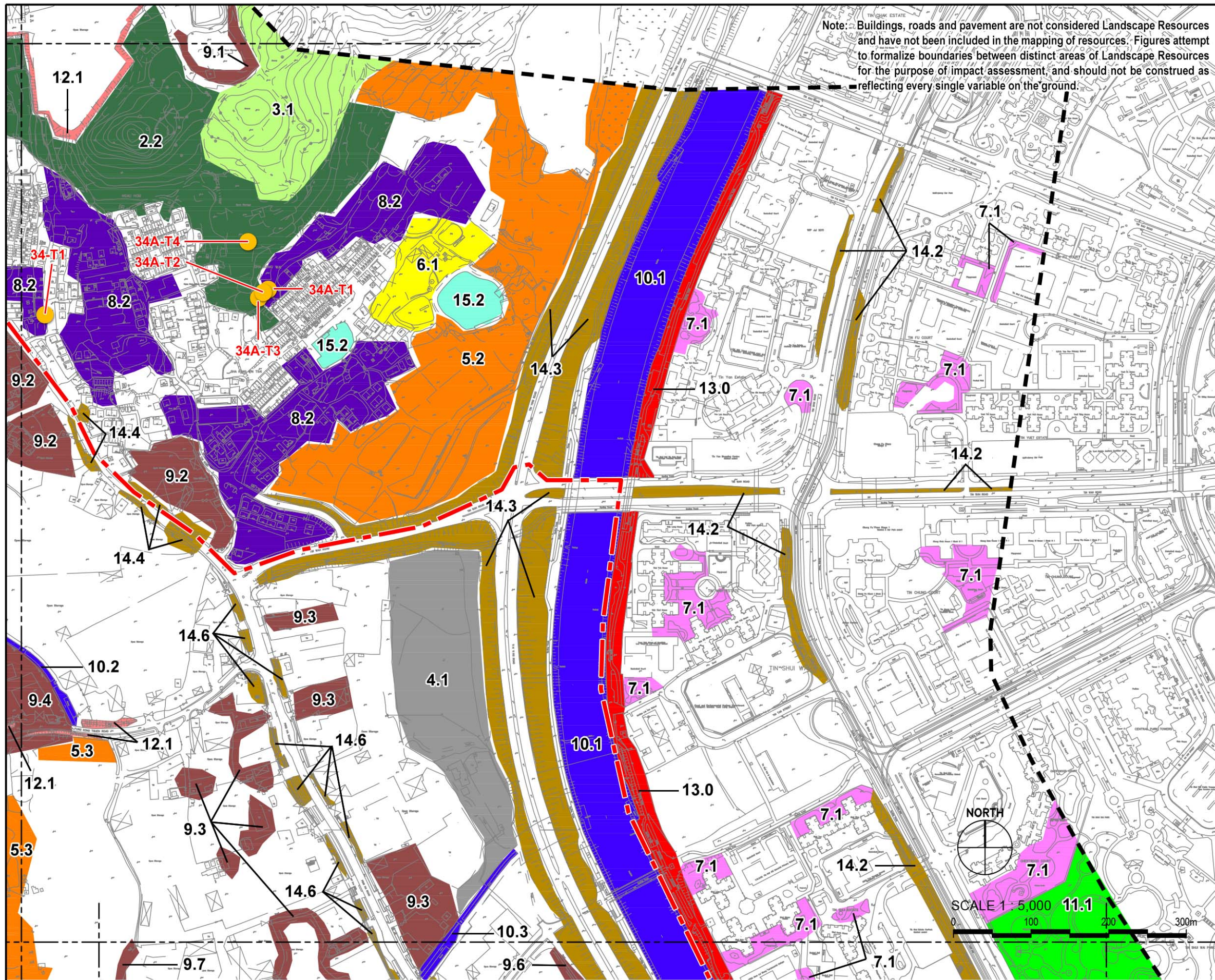
LEGEND

- 500m Assessment Area Boundary
- Project Boundary
- LR1 COASTAL WATERS & MUDFLATS = 626,041 SQM
- LR2 HILLSIDE WOODLAND = 2,724,784 SQM
- LR3 HILLSIDE SHRUB & GRASSLAND = 1,318,763 SQM
- LR4 LOW-LYING WOODLAND/PLANTATION = 359,258 SQ.M
- LR5 LOW-LYING SHRUB & GRASSLAND = 406,307 SQ.M
- LR6 VEGETATION ON AGRICULTURAL LAND = 528,982 SQM
- LR7 VEGETATION WITHIN RESIDENTIAL DEVELOPMENTS = 193,841 SQM
- LR8 VEGETATION WITHIN RURAL VILLAGE = 1,101,782 SQM
- LR9 VEGETATION WITHIN INDUSTRIAL LAND & OPEN STORAGE = 1,063,691 SQM
- LR10 WATERCOURSE = 284,738 SQ.M
- LR11 VEGETATION WITHIN URBAN PARKS = 117,737 SQM
- LR12 VEGETATION ON MODIFIED SLOPES = 286,152 SQM
- LR13 VEGETATION ALONG TIN SHUI WAI PROMENADE = 43,546 SQM
- LR14 ROADSIDE VEGETATION = 449,637 SQM
- LR15 WATERBODIES = 68,661 SQ.M
- LR16 MANGROVES = 110,582 SQM
- LR17 MARSH = 14,981 SQM
- LR18 IMPORTANT TREE = 91 NOS.

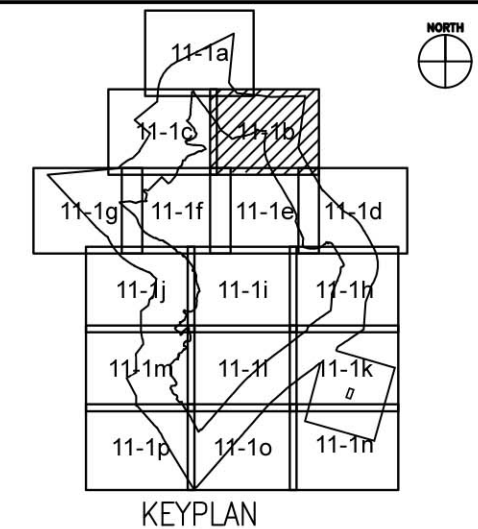


Agreement No. CE 2/2011 (CE)
Hung Shui Kiu New Development Area Planning and Engineering Study - Investigation
Landscape Resource Enlargement Plan 01

SCALE	1:5,000@A3	DATE	JUL 2016
CHECK	AM	DRAWN	LW
JOB No.	60222570	FIGURE	11.1a
		REV	

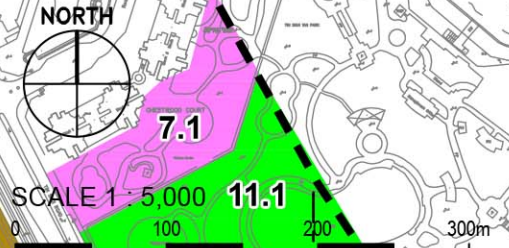


Note: Buildings, roads and pavement are not considered Landscape Resources and have not been included in the mapping of resources. Figures attempt to formalize boundaries between distinct areas of Landscape Resources for the purpose of impact assessment, and should not be construed as reflecting every single variable on the ground.



LEGEND

- 500m Assessment Area Boundary
- - - Project Boundary
- LR1 COASTAL WATERS & MUDFLATS = 626,041 SQM
- LR2 HILLSIDE WOODLAND = 2,724,784 SQM
- LR3 HILLSIDE SHRUB & GRASSLAND = 1,318,763 SQM
- LR4 LOW-LYING WOODLAND/PLANTATION = 359,258 SQ.M
- LR5 LOW-LYING SHRUB & GRASSLAND = 406,307 SQ.M
- LR6 VEGETATION ON AGRICULTURAL LAND = 528,982 SQM
- LR7 VEGETATION WITHIN RESIDENTIAL DEVELOPMENTS = 193,841 SQM
- LR8 VEGETATION WITHIN RURAL VILLAGE = 1,101,782 SQM
- LR9 VEGETATION WITHIN INDUSTRIAL LAND & OPEN STORAGE = 1,063,691 SQM
- LR10 WATERCOURSE = 284,738 SQ.M
- LR11 VEGETATION WITHIN URBAN PARKS = 117,737 SQM
- LR12 VEGETATION ON MODIFIED SLOPES = 286,152 SQM
- LR13 VEGETATION ALONG TIN SHUI WAI PROMENADE = 43,546 SQM
- LR14 ROADSIDE VEGETATION = 449,637 SQM
- LR15 WATERBODIES = 68,661 SQ.M
- LR16 MANGROVES = 110,582 SQM
- LR17 MARSH = 14,981 SQM
- LR18 IMPORTANT TREE = 91 NOS.



Agreement No. CE 2/2011 (CE)
 Hung Shui Kiu New Development Area Planning and Engineering Study - Investigation
Landscape Resource Enlargement Plan 02

SCALE	1:5,000@A3	DATE	JUL 2016
CHECK	AM	DRAWN	LW
JOB No.	60222570	FIGURE	11.1b
		REV	

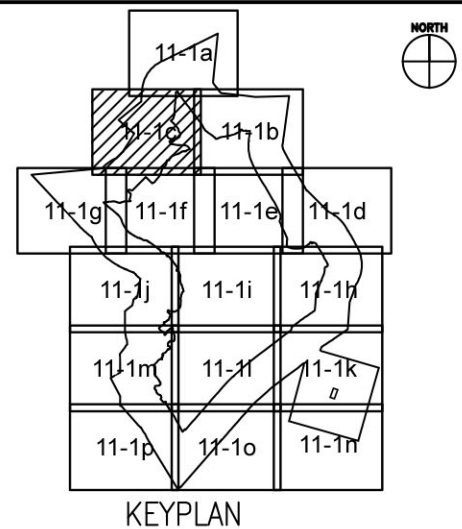
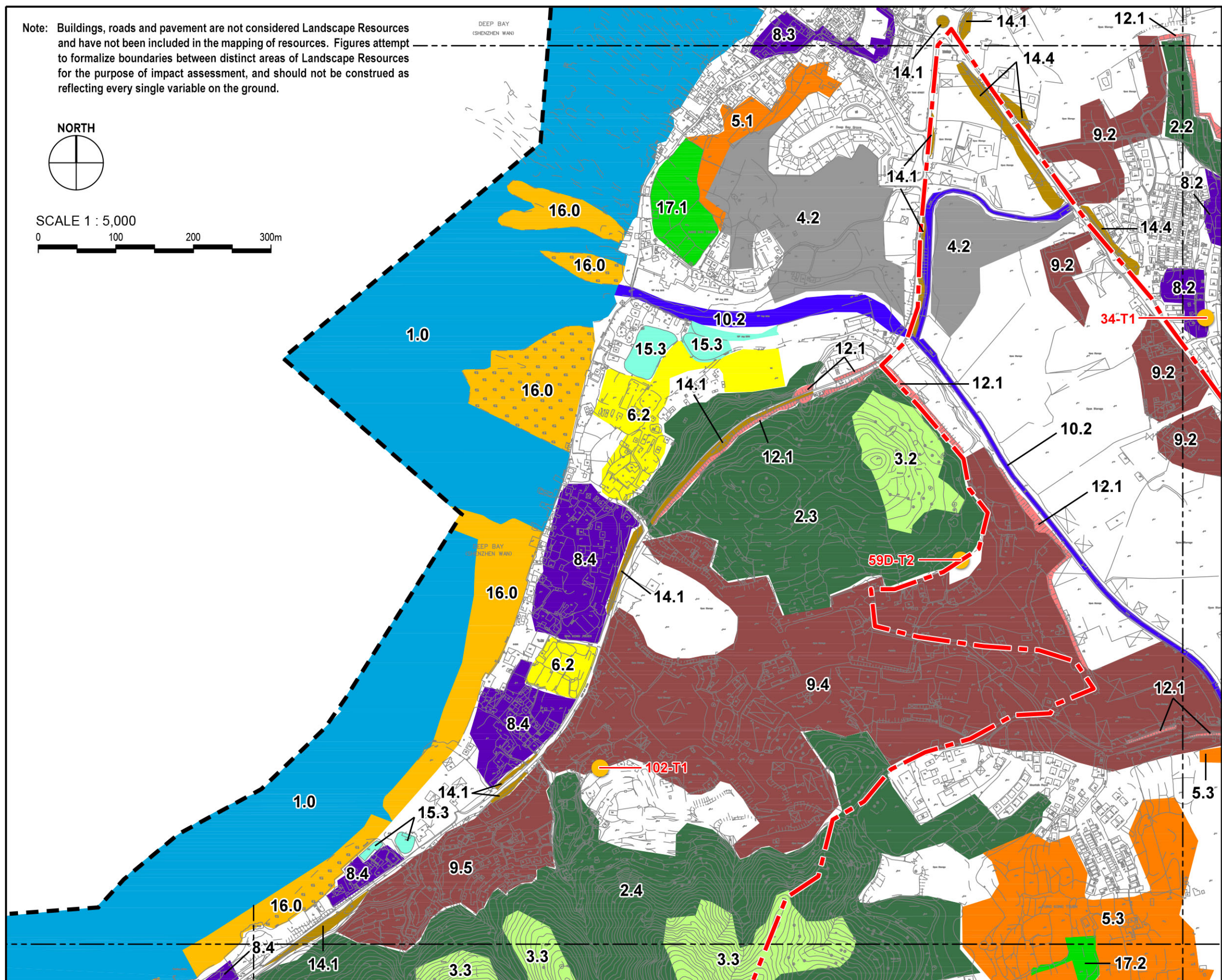
Note: Buildings, roads and pavement are not considered Landscape Resources and have not been included in the mapping of resources. Figures attempt to formalize boundaries between distinct areas of Landscape Resources for the purpose of impact assessment, and should not be construed as reflecting every single variable on the ground.



SCALE 1 : 5,000



DEEP BAY (SHENZHEN WAN)



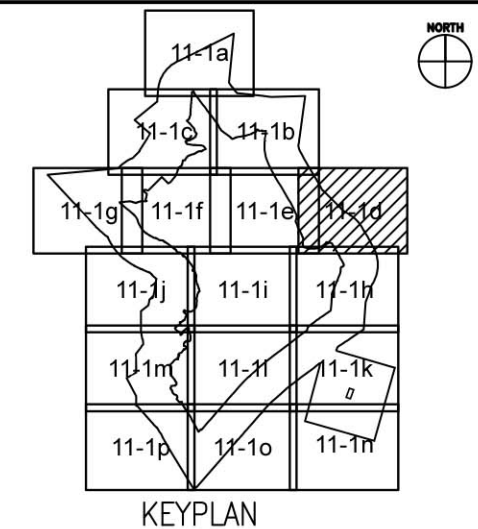
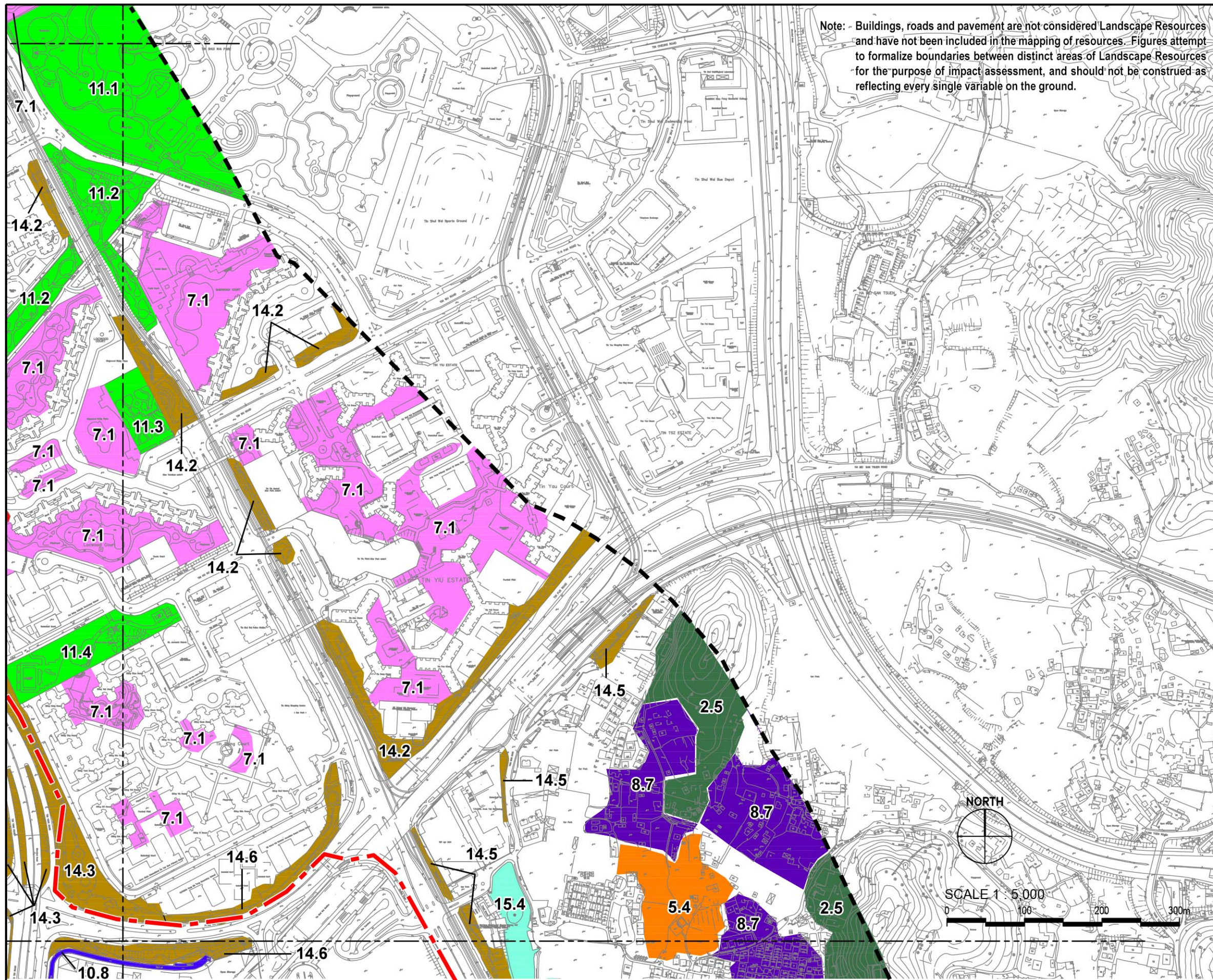
LEGEND

- 500m Assessment Area Boundary
- Project Boundary
- LR1 COASTAL WATERS & MUDFLATS = 626,041 SQM
- LR2 HILLSIDE WOODLAND = 2,724,784 SQM
- LR3 HILLSIDE SHRUB & GRASSLAND = 1,318,763 SQM
- LR4 LOW-LYING WOODLAND/PLANTATION = 359,258 SQ.M
- LR5 LOW-LYING SHRUB & GRASSLAND = 406,307 SQ.M
- LR6 VEGETATION ON AGRICULTURAL LAND = 528,982 SQM
- LR7 VEGETATION WITHIN RESIDENTIAL DEVELOPMENTS = 193,841 SQM
- LR8 VEGETATION WITHIN RURAL VILLAGE = 1,101,782 SQM
- LR9 VEGETATION WITHIN INDUSTRIAL LAND & OPEN STORAGE = 1,063,691 SQM
- LR10 WATERCOURSE = 284,738 SQ.M
- LR11 VEGETATION WITHIN URBAN PARKS = 117,737 SQM
- LR12 VEGETATION ON MODIFIED SLOPES = 286,152 SQM
- LR13 VEGETATION ALONG TIN SHUI WAI PROMENADE = 43,546 SQM
- LR14 ROADSIDE VEGETATION = 449,637 SQM
- LR15 WATERBODIES = 68,661 SQ.M
- LR16 MANGROVES = 110,582 SQM
- LR17 MARSH = 14,981 SQM
- LR18 IMPORTANT TREE = 91 NOS.



Agreement No. CE 2/2011 (CE)
 Hung Shui Kiu New Development Area Planning and Engineering Study - Investigation
Landscape Resource Enlargement Plan 03

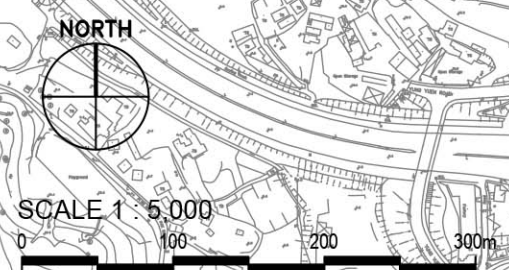
SCALE	1:5,000@A3	DATE	AUG 2016
CHECK	AM	DRAWN	LW
JOB No.	60222570	FIGURE	11.1c
		REV	



LEGEND

- 500m Assessment Area Boundary
- - - Project Boundary

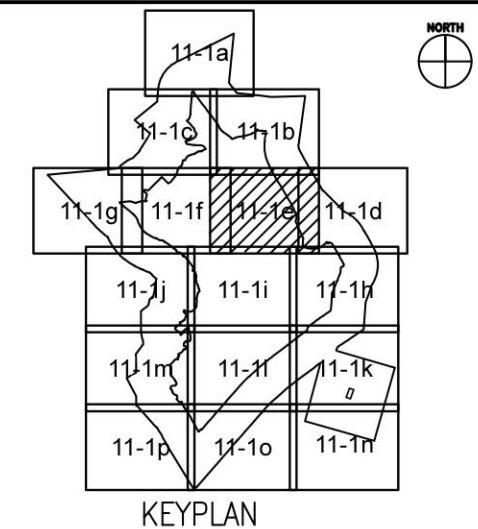
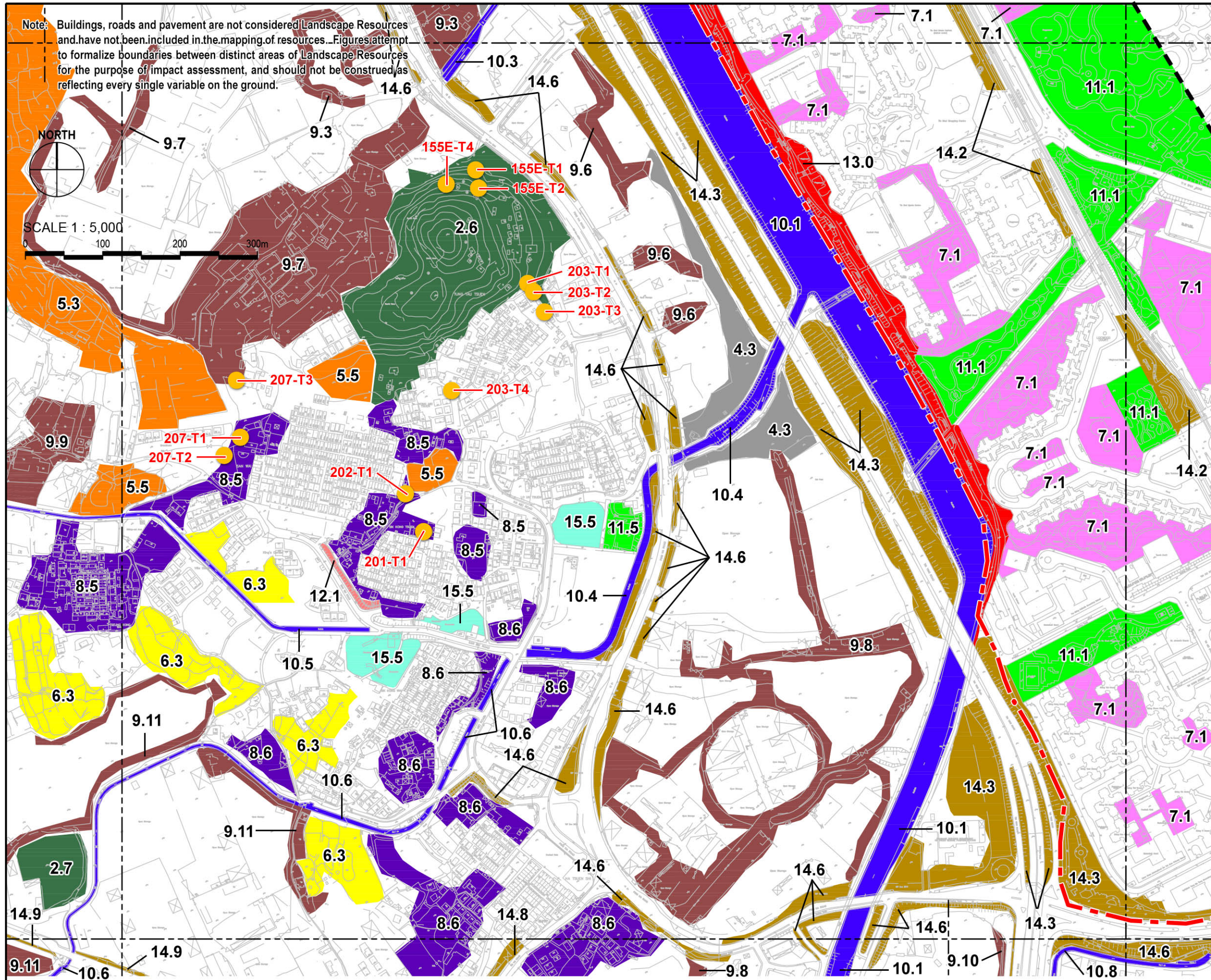
	LR1 COASTAL WATERS & MUDFLATS = 626,041 SQM
	LR2 HILLSIDE WOODLAND = 2,724,784 SQM
	LR3 HILLSIDE SHRUB & GRASSLAND = 1,318,763 SQM
	LR4 LOW-LYING WOODLAND/PLANTATION = 359,258 SQ.M
	LR5 LOW-LYING SHRUB & GRASSLAND = 406,307 SQ.M
	LR6 VEGETATION ON AGRICULTURAL LAND = 528,982 SQM
	LR7 VEGETATION WITHIN RESIDENTIAL DEVELOPMENTS = 193,841 SQM
	LR8 VEGETATION WITHIN RURAL VILLAGE = 1,101,782 SQM
	LR9 VEGETATION WITHIN INDUSTRIAL LAND & OPEN STORAGE = 1,063,691 SQM
	LR10 WATERCOURSE = 284,738 SQ.M
	LR11 VEGETATION WITHIN URBAN PARKS = 117,737 SQM
	LR12 VEGETATION ON MODIFIED SLOPES = 286,152 SQM
	LR13 VEGETATION ALONG TIN SHUI WAI PROMENADE = 43,546 SQM
	LR14 ROADSIDE VEGETATION = 449,637 SQM
	LR15 WATERBODIES = 68,661 SQ.M
	LR16 MANGROVES = 110,582 SQM
	LR17 MARSH = 14,981 SQM
	LR18 IMPORTANT TREE = 91 NOS.



Agreement No. CE 2/2011 (CE)
 Hung Shui Kiu New Development Area Planning and Engineering Study - Investigation
Landscape Resource Enlargement Plan 04

SCALE	1:5,000@A3	DATE	JUL 2016
CHECK	AM	DRAWN	LW
JOB No.	60222570	FIGURE	11.1d
		REV	

Note: Buildings, roads and pavement are not considered Landscape Resources and have not been included in the mapping of resources. Figures attempt to formalize boundaries between distinct areas of Landscape Resources for the purpose of impact assessment, and should not be construed as reflecting every single variable on the ground.



LEGEND

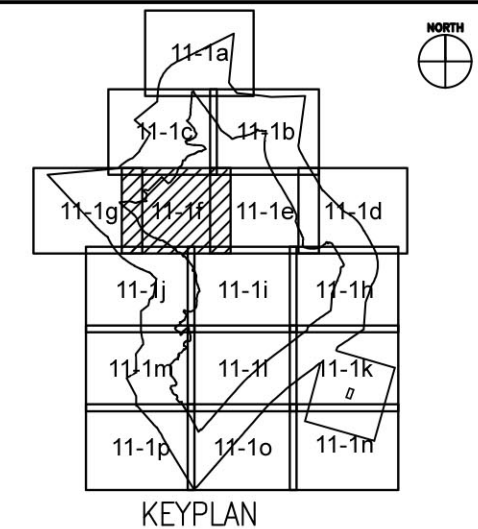
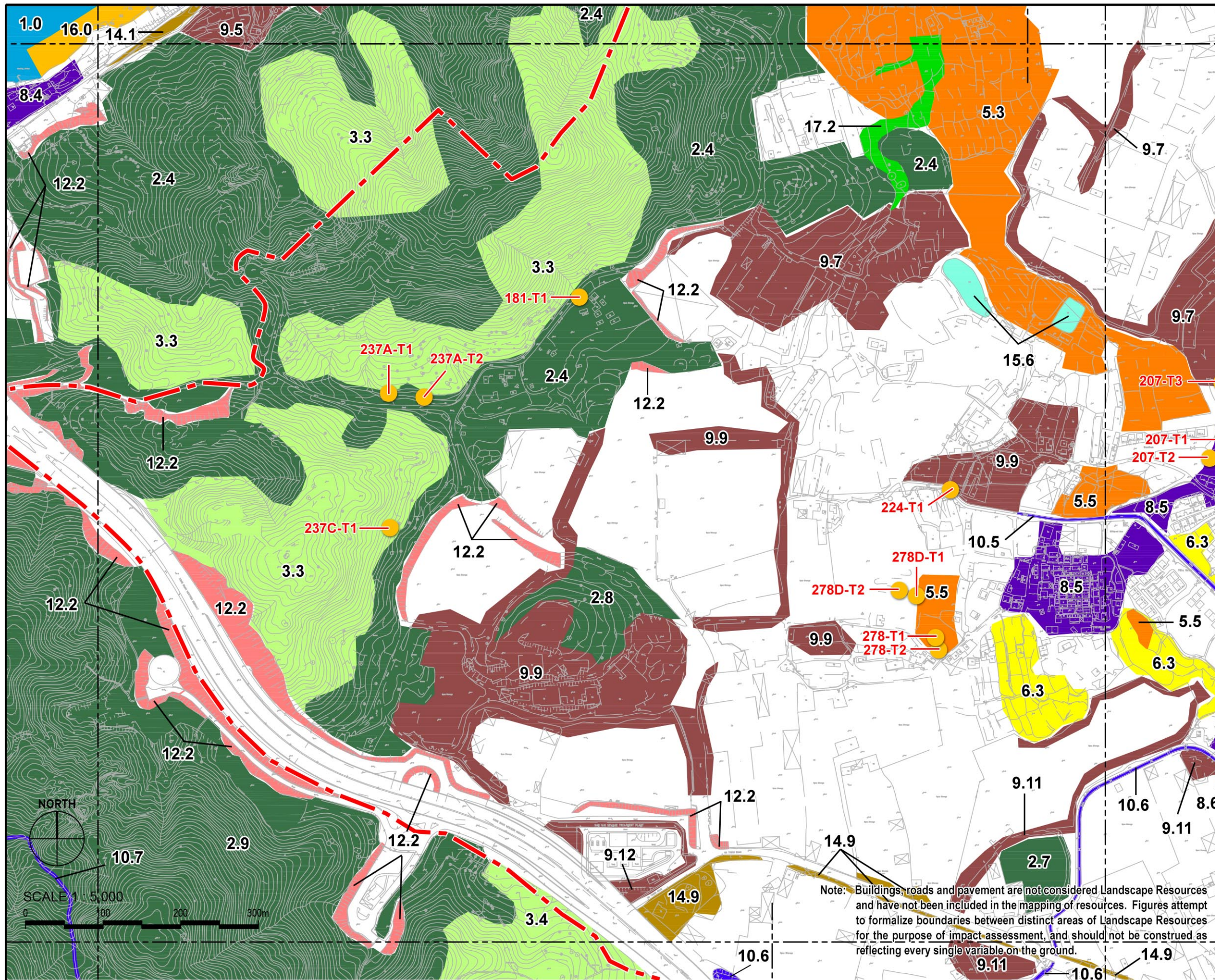
- 500m Assessment Area Boundary
- - - Project Boundary

	LR1 COASTAL WATERS & MUDFLATS = 626,041 SQM
	LR2 HILLSIDE WOODLAND = 2,724,784 SQM
	LR3 HILLSIDE SHRUB & GRASSLAND = 1,318,763 SQM
	LR4 LOW-LYING WOODLAND/PLANTATION = 359,258 SQ.M
	LR5 LOW-LYING SHRUB & GRASSLAND = 406,307 SQ.M
	LR6 VEGETATION ON AGRICULTURAL LAND = 528,982 SQM
	LR7 VEGETATION WITHIN RESIDENTIAL DEVELOPMENTS = 193,841 SQM
	LR8 VEGETATION WITHIN RURAL VILLAGE = 1,101,782 SQM
	LR9 VEGETATION WITHIN INDUSTRIAL LAND & OPEN STORAGE = 1,063,691 SQM
	LR10 WATERCOURSE = 284,738 SQ.M
	LR11 VEGETATION WITHIN URBAN PARKS = 117,737 SQM
	LR12 VEGETATION ON MODIFIED SLOPES = 286,152 SQM
	LR13 VEGETATION ALONG TIN SHUI WAI PROMENADE = 43,546 SQM
	LR14 ROADSIDE VEGETATION = 449,637 SQM
	LR15 WATERBODIES = 68,661 SQ.M
	LR16 MANGROVES = 110,582 SQM
	LR17 MARSH = 14,981 SQM
	LR18 IMPORTANT TREE = 91 NOS.



Agreement No. CE 2/2011 (CE)
 Hung Shui Kiu New Development Area Planning and Engineering Study - Investigation
Landscape Resource Enlargement Plan 05

SCALE	1:5,000@A3	DATE	AUG 2016
CHECK	AM	DRAWN	LW
JOB No.	60222570	FIGURE	11.1e
		REV	



LEGEND

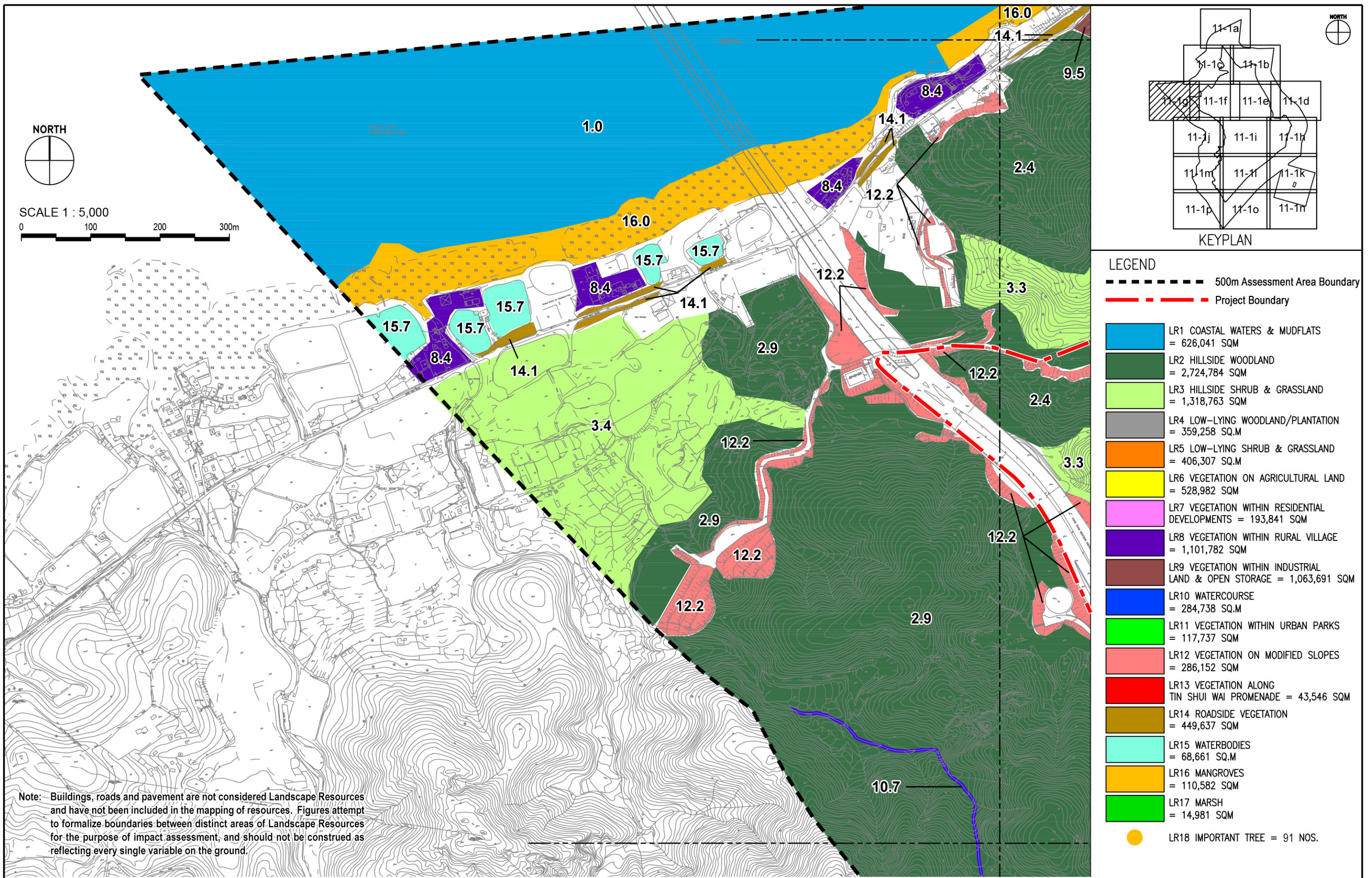
- 500m Assessment Area Boundary
- - - Project Boundary

	LR1 COASTAL WATERS & MUDFLATS = 626,041 SQM
	LR2 HILLSIDE WOODLAND = 2,724,784 SQM
	LR3 HILLSIDE SHRUB & GRASSLAND = 1,318,763 SQM
	LR4 LOW-LYING WOODLAND/PLANTATION = 359,258 SQ.M
	LR5 LOW-LYING SHRUB & GRASSLAND = 406,307 SQ.M
	LR6 VEGETATION ON AGRICULTURAL LAND = 528,982 SQM
	LR7 VEGETATION WITHIN RESIDENTIAL DEVELOPMENTS = 193,841 SQM
	LR8 VEGETATION WITHIN RURAL VILLAGE = 1,101,782 SQM
	LR9 VEGETATION WITHIN INDUSTRIAL LAND & OPEN STORAGE = 1,063,691 SQM
	LR10 WATERCOURSE = 284,738 SQ.M
	LR11 VEGETATION WITHIN URBAN PARKS = 117,737 SQM
	LR12 VEGETATION ON MODIFIED SLOPES = 286,152 SQM
	LR13 VEGETATION ALONG TIN SHUI WAI PROMENADE = 43,546 SQM
	LR14 ROADSIDE VEGETATION = 449,637 SQM
	LR15 WATERBODIES = 68,661 SQ.M
	LR16 MANGROVES = 110,582 SQM
	LR17 MARSH = 14,981 SQM
	LR18 IMPORTANT TREE = 91 NOS.



Agreement No. CE 2/2011 (CE)
 Hung Shui Kiu New Development Area Planning and Engineering Study - Investigation
Landscape Resource Enlargement Plan 06

SCALE	1:5,000@A3	DATE	AUG 2016
CHECK	AM	DRAWN	LW
JOB No.	60222570	FIGURE	11.1f
		REV	

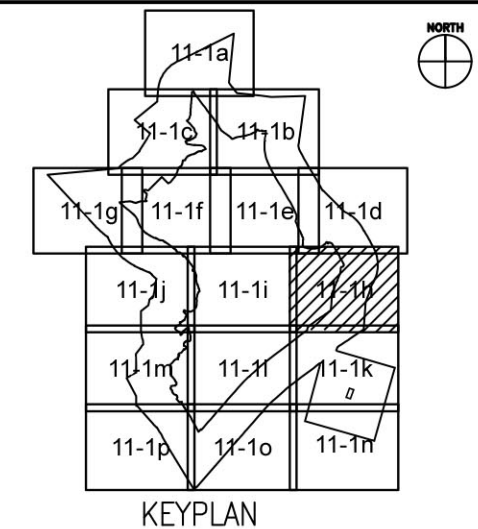
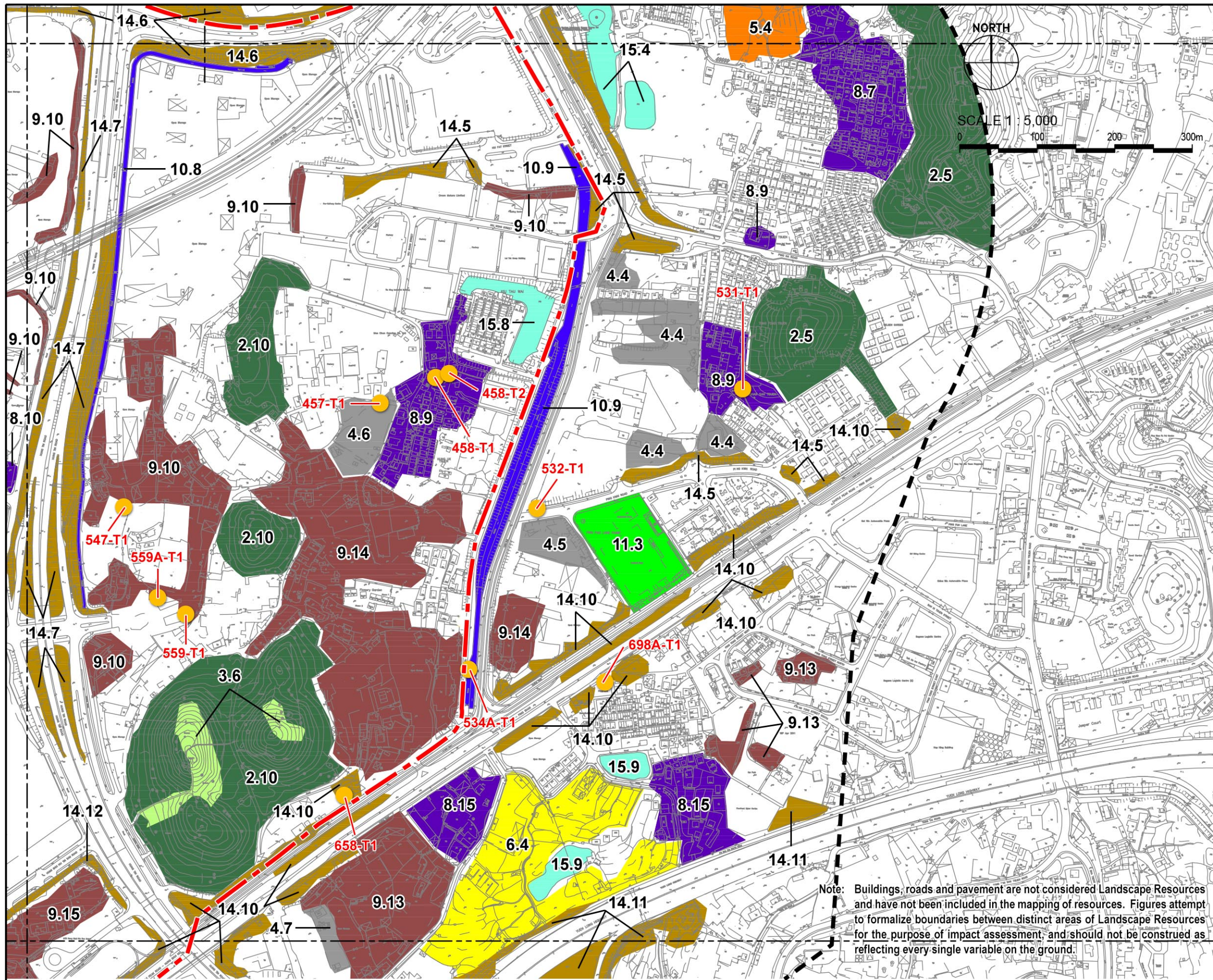


Note: Buildings, roads and pavement are not considered Landscape Resources and have not been included in the mapping of resources. Figures attempt to formalize boundaries between distinct areas of Landscape Resources for the purpose of impact assessment, and should not be construed as reflecting every single variable on the ground.



Agreement No. CE 2/2011 (CE)
 Hung Shui Kiu New Development Area Planning and Engineering Study - Investigation
Landscape Resource Enlargement Plan 07

SCALE	1:5,000@A3	DATE	AUG 2016
CHECK	AM	DRAWN	LW
JOB No.	60222570	FIGURE	11.1g
		REV	



LEGEND

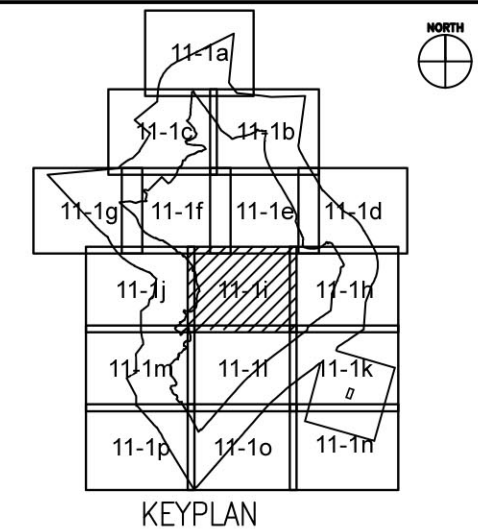
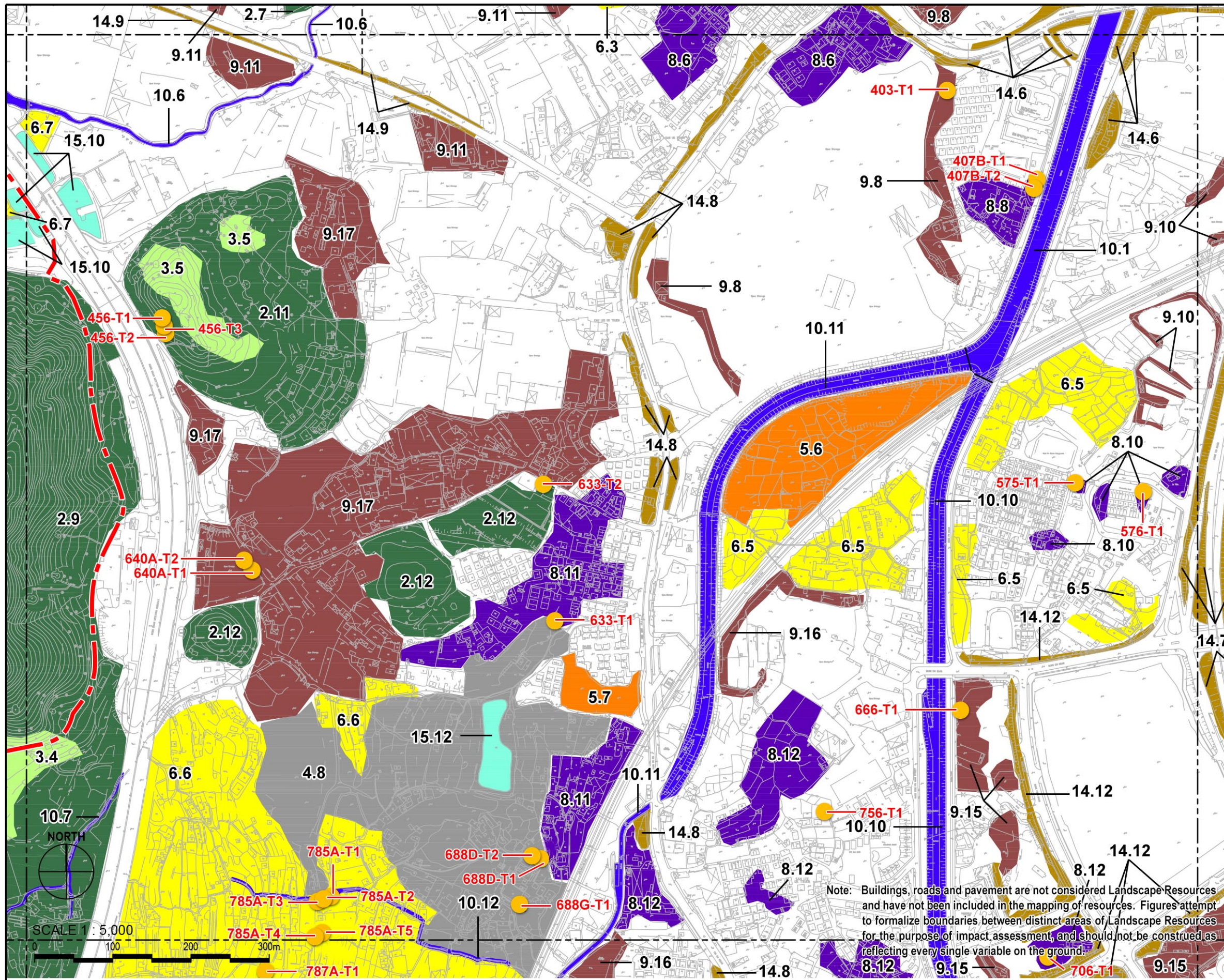
- 500m Assessment Area Boundary
- - - Project Boundary
- LR1 COASTAL WATERS & MUDFLATS = 626,041 SQM
- LR2 HILLSIDE WOODLAND = 2,724,784 SQM
- LR3 HILLSIDE SHRUB & GRASSLAND = 1,318,763 SQM
- LR4 LOW-LYING WOODLAND/PLANTATION = 359,258 SQ.M
- LR5 LOW-LYING SHRUB & GRASSLAND = 406,307 SQ.M
- LR6 VEGETATION ON AGRICULTURAL LAND = 528,982 SQM
- LR7 VEGETATION WITHIN RESIDENTIAL DEVELOPMENTS = 193,841 SQM
- LR8 VEGETATION WITHIN RURAL VILLAGE = 1,101,782 SQM
- LR9 VEGETATION WITHIN INDUSTRIAL LAND & OPEN STORAGE = 1,063,691 SQM
- LR10 WATERCOURSE = 284,738 SQ.M
- LR11 VEGETATION WITHIN URBAN PARKS = 117,737 SQM
- LR12 VEGETATION ON MODIFIED SLOPES = 286,152 SQM
- LR13 VEGETATION ALONG TIN SHUI WAI PROMENADE = 43,546 SQM
- LR14 ROADSIDE VEGETATION = 449,637 SQM
- LR15 WATERBODIES = 68,661 SQ.M
- LR16 MANGROVES = 110,582 SQM
- LR17 MARSH = 14,981 SQM
- LR18 IMPORTANT TREE = 91 NOS.

Note: Buildings, roads and pavement are not considered Landscape Resources and have not been included in the mapping of resources. Figures attempt to formalize boundaries between distinct areas of Landscape Resources for the purpose of impact assessment, and should not be construed as reflecting every single variable on the ground.



Agreement No. CE 2/2011 (CE)
 Hung Shui Kiu New Development Area Planning and Engineering Study - Investigation
Landscape Resource Enlargement Plan 08

SCALE	1:5,000@A3	DATE	AUG 2016
CHECK	AM	DRAWN	LW
JOB No.	60222570	FIGURE	11.1h
		REV	



LEGEND

- 500m Assessment Area Boundary
- - - Project Boundary
- LR1 COASTAL WATERS & MUDFLATS = 626,041 SQM
- LR2 HILLSIDE WOODLAND = 2,724,784 SQM
- LR3 HILLSIDE SHRUB & GRASSLAND = 1,318,763 SQM
- LR4 LOW-LYING WOODLAND/PLANTATION = 359,258 SQ.M
- LR5 LOW-LYING SHRUB & GRASSLAND = 406,307 SQ.M
- LR6 VEGETATION ON AGRICULTURAL LAND = 528,982 SQM
- LR7 VEGETATION WITHIN RESIDENTIAL DEVELOPMENTS = 193,841 SQM
- LR8 VEGETATION WITHIN RURAL VILLAGE = 1,101,782 SQM
- LR9 VEGETATION WITHIN INDUSTRIAL LAND & OPEN STORAGE = 1,063,691 SQM
- LR10 WATERCOURSE = 284,738 SQ.M
- LR11 VEGETATION WITHIN URBAN PARKS = 117,737 SQM
- LR12 VEGETATION ON MODIFIED SLOPES = 286,152 SQM
- LR13 VEGETATION ALONG TIN SHUI WAI PROMENADE = 43,546 SQM
- LR14 ROADSIDE VEGETATION = 449,637 SQM
- LR15 WATERBODIES = 68,661 SQ.M
- LR16 MANGROVES = 110,582 SQM
- LR17 MARSH = 14,981 SQM
- LR18 IMPORTANT TREE = 91 NOS.

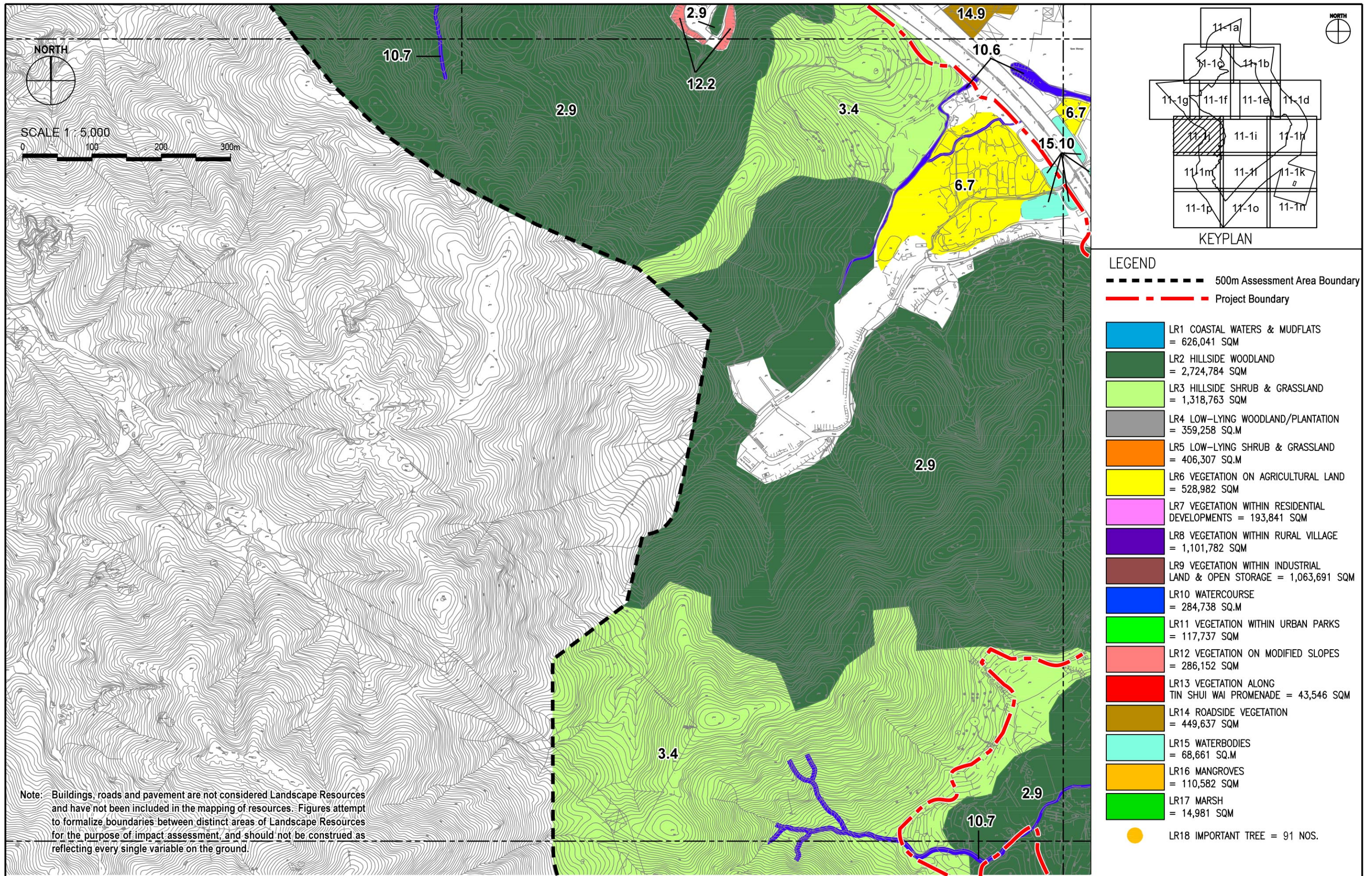
Note: Buildings, roads and pavement are not considered Landscape Resources and have not been included in the mapping of resources. Figures attempt to formalize boundaries between distinct areas of Landscape Resources for the purpose of impact assessment, and should not be construed as reflecting every single variable on the ground.

SCALE 1 : 5,000
0 100 200 300m



Agreement No. CE 2/2011 (CE)
Hung Shui Kiu New Development Area Planning and Engineering Study - Investigation
Landscape Resource Enlargement Plan 09

SCALE	1:5,000@A3	DATE	AUG 2016
CHECK	AM	DRAWN	LW
JOB No.	60222570	FIGURE	11.1i
		REV	

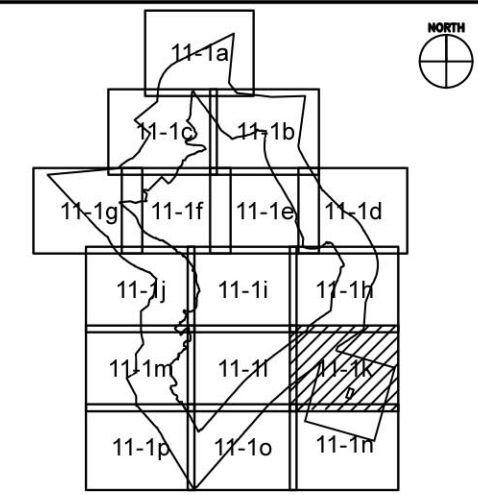
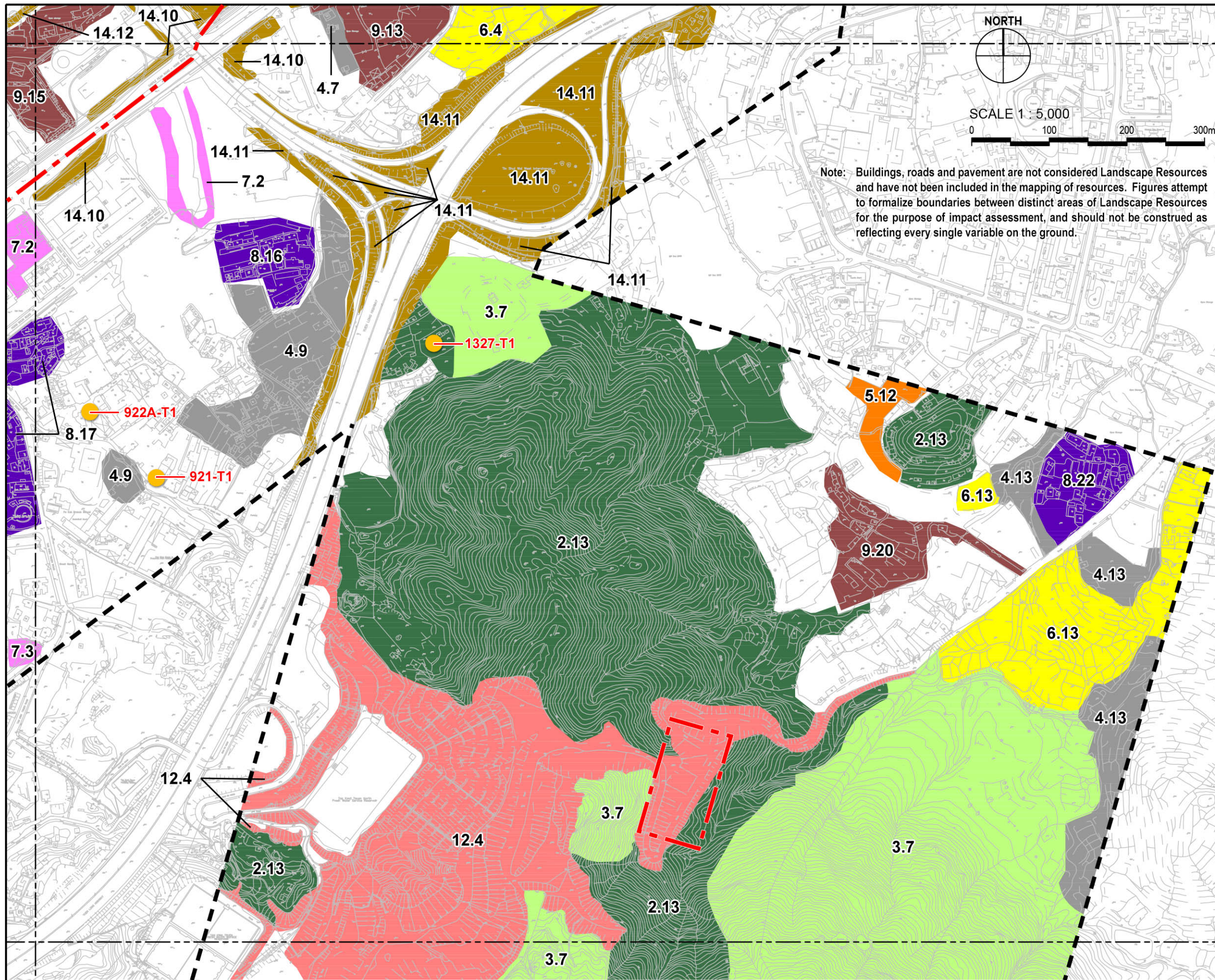


Note: Buildings, roads and pavement are not considered Landscape Resources and have not been included in the mapping of resources. Figures attempt to formalize boundaries between distinct areas of Landscape Resources for the purpose of impact assessment, and should not be construed as reflecting every single variable on the ground.



Agreement No. CE 2/2011 (CE)
 Hung Shui Kiu New Development Area Planning and Engineering Study - Investigation
Landscape Resource Enlargement Plan 10

SCALE	1:5,000@A3	DATE	AUG 2016
CHECK	AM	DRAWN	LW
JOB No.	60222570	FIGURE	11.1j
		REV	



LEGEND

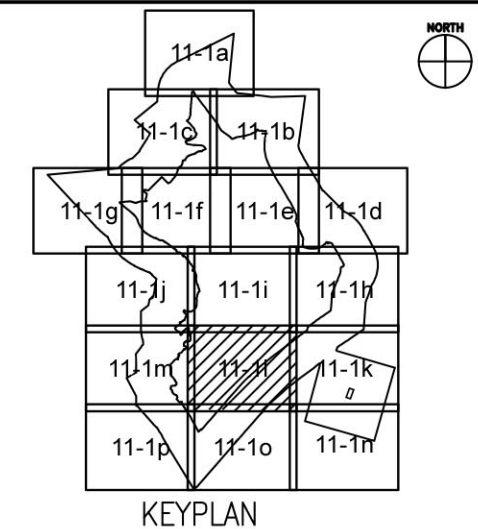
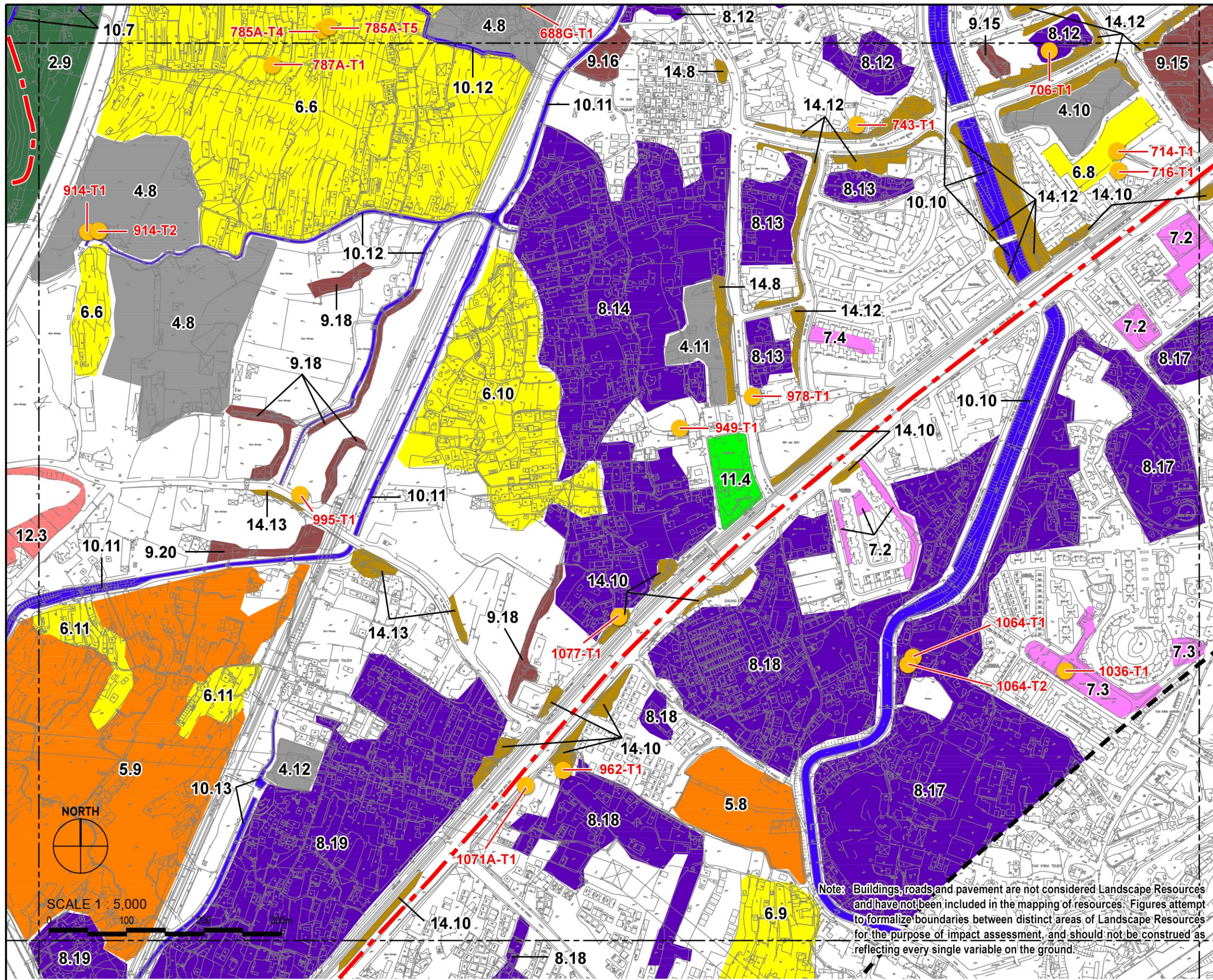
- 500m Assessment Area Boundary
- - - Project Boundary

	LR1 COASTAL WATERS & MUDFLATS = 626,041 SQM
	LR2 HILLSIDE WOODLAND = 2,724,784 SQM
	LR3 HILLSIDE SHRUB & GRASSLAND = 1,318,763 SQM
	LR4 LOW-LYING WOODLAND/PLANTATION = 359,258 SQ.M
	LR5 LOW-LYING SHRUB & GRASSLAND = 406,307 SQ.M
	LR6 VEGETATION ON AGRICULTURAL LAND = 528,982 SQM
	LR7 VEGETATION WITHIN RESIDENTIAL DEVELOPMENTS = 193,841 SQM
	LR8 VEGETATION WITHIN RURAL VILLAGE = 1,101,782 SQM
	LR9 VEGETATION WITHIN INDUSTRIAL LAND & OPEN STORAGE = 1,063,691 SQM
	LR10 WATERCOURSE = 284,738 SQ.M
	LR11 VEGETATION WITHIN URBAN PARKS = 117,737 SQM
	LR12 VEGETATION ON MODIFIED SLOPES = 286,152 SQM
	LR13 VEGETATION ALONG TIN SHUI WAI PROMENADE = 43,546 SQM
	LR14 ROADSIDE VEGETATION = 449,637 SQM
	LR15 WATERBODIES = 68,661 SQ.M
	LR16 MANGROVES = 110,582 SQM
	LR17 MARSH = 14,981 SQM
	LR18 IMPORTANT TREE = 91 NOS.



Agreement No. CE 2/2011 (CE)
 Hung Shui Kiu New Development Area Planning and Engineering Study - Investigation
Landscape Resource Enlargement Plan 11

SCALE	1:5,000@A3	DATE	AUG 2016
CHECK	AM	DRAWN	LW
JOB No.	60222570	FIGURE	11.1k
		REV	



LEGEND

- 500m Assessment Area Boundary
- - - Project Boundary

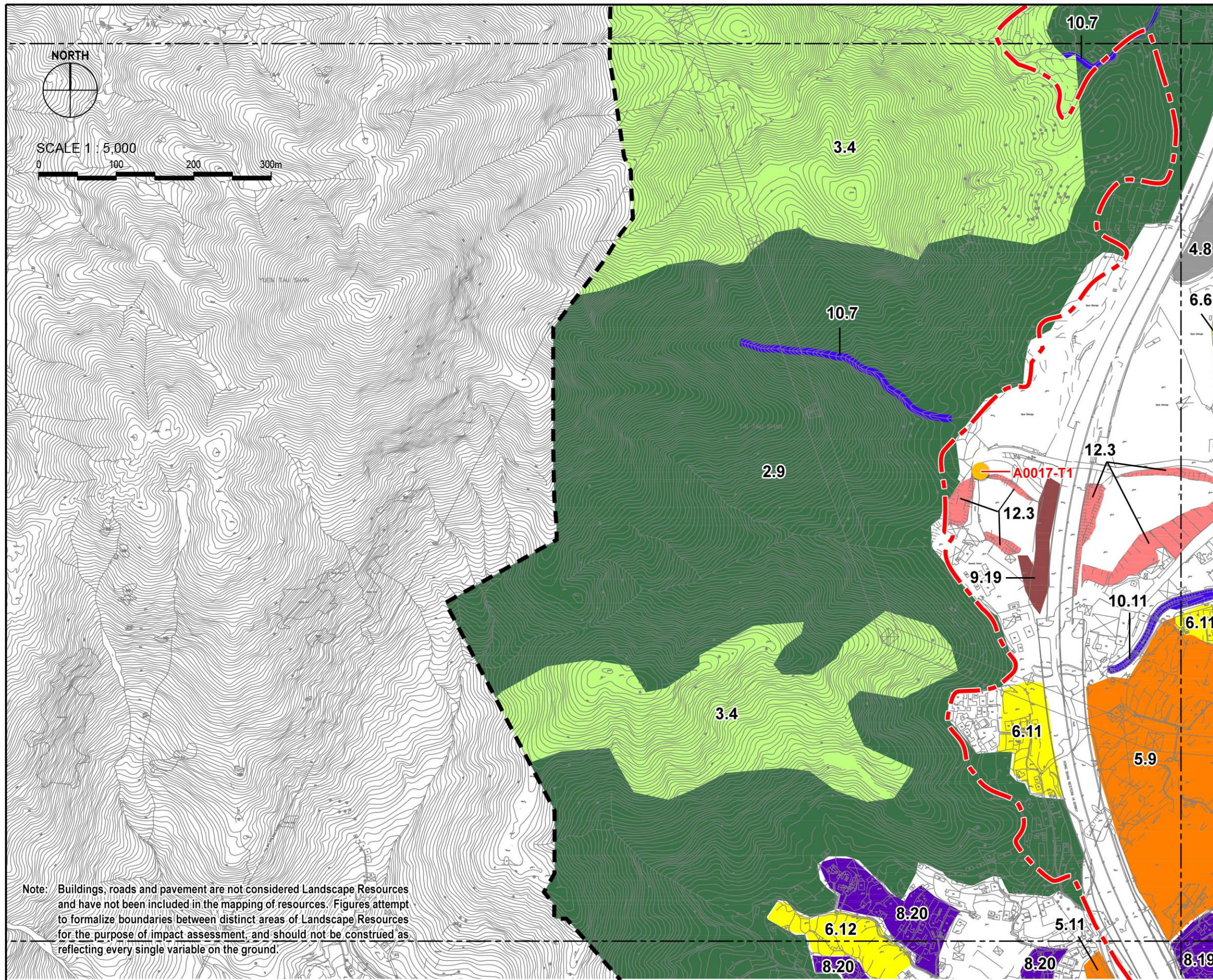
	LR1 COASTAL WATERS & MUDFLATS = 626,041 SQM
	LR2 HILLSIDE WOODLAND = 2,724,784 SQM
	LR3 HILLSIDE SHRUB & GRASSLAND = 1,318,763 SQM
	LR4 LOW-LYING WOODLAND/PLANTATION = 359,258 SQ.M
	LR5 LOW-LYING SHRUB & GRASSLAND = 406,307 SQ.M
	LR6 VEGETATION ON AGRICULTURAL LAND = 528,982 SQM
	LR7 VEGETATION WITHIN RESIDENTIAL DEVELOPMENTS = 193,841 SQM
	LR8 VEGETATION WITHIN RURAL VILLAGE = 1,101,782 SQM
	LR9 VEGETATION WITHIN INDUSTRIAL LAND & OPEN STORAGE = 1,063,691 SQM
	LR10 WATERCOURSE = 284,738 SQ.M
	LR11 VEGETATION WITHIN URBAN PARKS = 117,737 SQM
	LR12 VEGETATION ON MODIFIED SLOPES = 286,152 SQM
	LR13 VEGETATION ALONG TIN SHUI WAI PROMENADE = 43,546 SQM
	LR14 ROADSIDE VEGETATION = 449,637 SQM
	LR15 WATERBODIES = 68,661 SQ.M
	LR16 MANGROVES = 110,582 SQM
	LR17 MARSH = 14,981 SQM
	LR18 IMPORTANT TREE = 91 NOS.

Note: Buildings, roads and pavement are not considered Landscape Resources and have not been included in the mapping of resources. Figures attempt to formalize boundaries between distinct areas of Landscape Resources for the purpose of impact assessment, and should not be construed as reflecting every single variable on the ground.

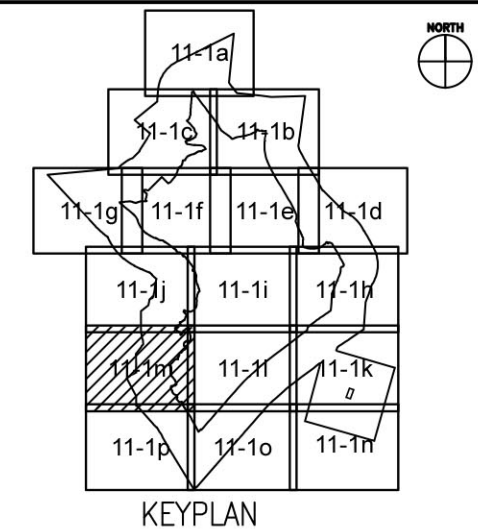


Agreement No. CE 2/2011 (CE)
 Hung Shui Kiu New Development Area Planning and Engineering Study - Investigation
Landscape Resource Enlargement Plan 12

SCALE	1:5,000@A3	DATE	AUG 2016
CHECK	AM	DRAWN	LW
JOB No.	60222570	FIGURE 11.11	REV



Note: Buildings, roads and pavement are not considered Landscape Resources and have not been included in the mapping of resources. Figures attempt to formalize boundaries between distinct areas of Landscape Resources for the purpose of impact assessment, and should not be construed as reflecting every single variable on the ground.



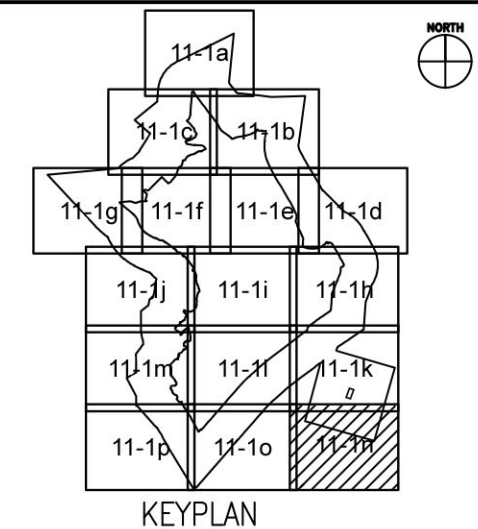
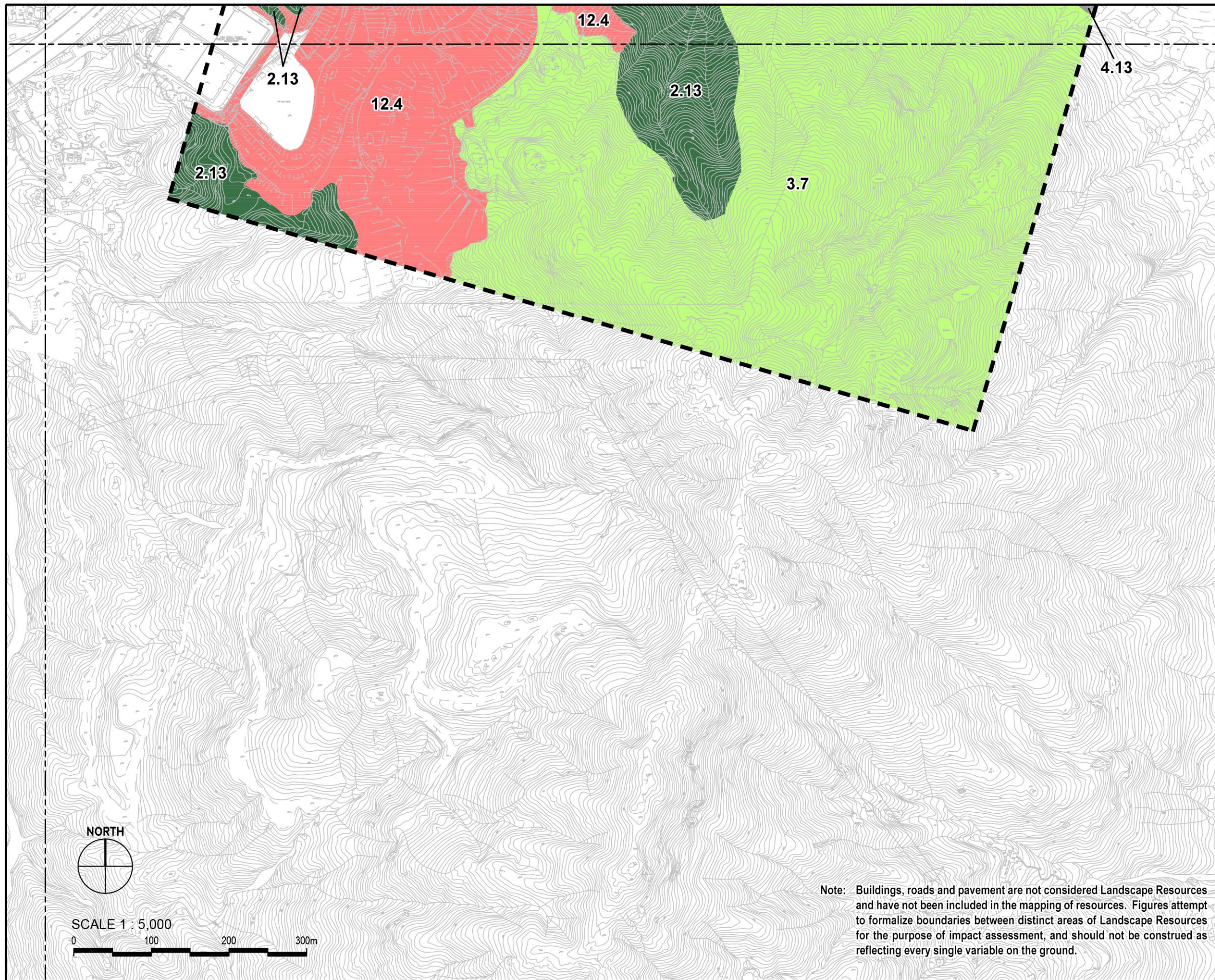
LEGEND

- 500m Assessment Area Boundary
- - - Project Boundary
- LR1 COASTAL WATERS & MUDFLATS = 626,041 SQM
- LR2 HILLSIDE WOODLAND = 2,724,784 SQM
- LR3 HILLSIDE SHRUB & GRASSLAND = 1,318,763 SQM
- LR4 LOW-LYING WOODLAND/PLANTATION = 359,258 SQ.M
- LR5 LOW-LYING SHRUB & GRASSLAND = 406,307 SQ.M
- LR6 VEGETATION ON AGRICULTURAL LAND = 528,982 SQM
- LR7 VEGETATION WITHIN RESIDENTIAL DEVELOPMENTS = 193,841 SQM
- LR8 VEGETATION WITHIN RURAL VILLAGE = 1,101,782 SQM
- LR9 VEGETATION WITHIN INDUSTRIAL LAND & OPEN STORAGE = 1,063,691 SQM
- LR10 WATERCOURSE = 284,738 SQ.M
- LR11 VEGETATION WITHIN URBAN PARKS = 117,737 SQM
- LR12 VEGETATION ON MODIFIED SLOPES = 286,152 SQM
- LR13 VEGETATION ALONG TIN SHUI WAI PROMENADE = 43,546 SQM
- LR14 ROADSIDE VEGETATION = 449,637 SQM
- LR15 WATERBODIES = 68,661 SQ.M
- LR16 MANGROVES = 110,582 SQM
- LR17 MARSH = 14,981 SQM
- LR18 IMPORTANT TREE = 91 NOS.



Agreement No. CE 2/2011 (CE)
 Hung Shui Kiu New Development Area Planning and Engineering Study - Investigation
Landscape Resource Enlargement Plan 13

SCALE	1:5,000@A3	DATE	AUG 2016
CHECK	AM	DRAWN	LW
JOB No.	60222570	FIGURE	11.1m
		REV	



LEGEND

- 500m Assessment Area Boundary
- Project Boundary

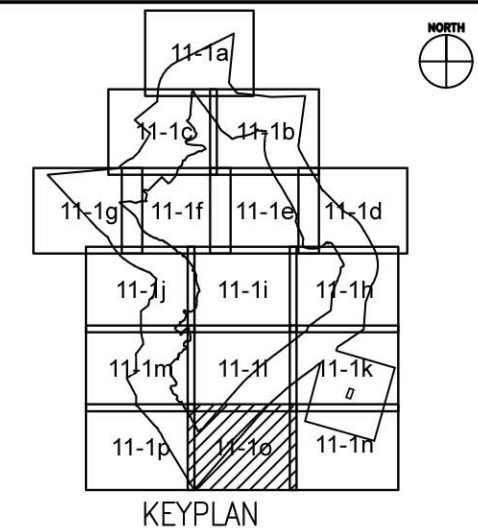
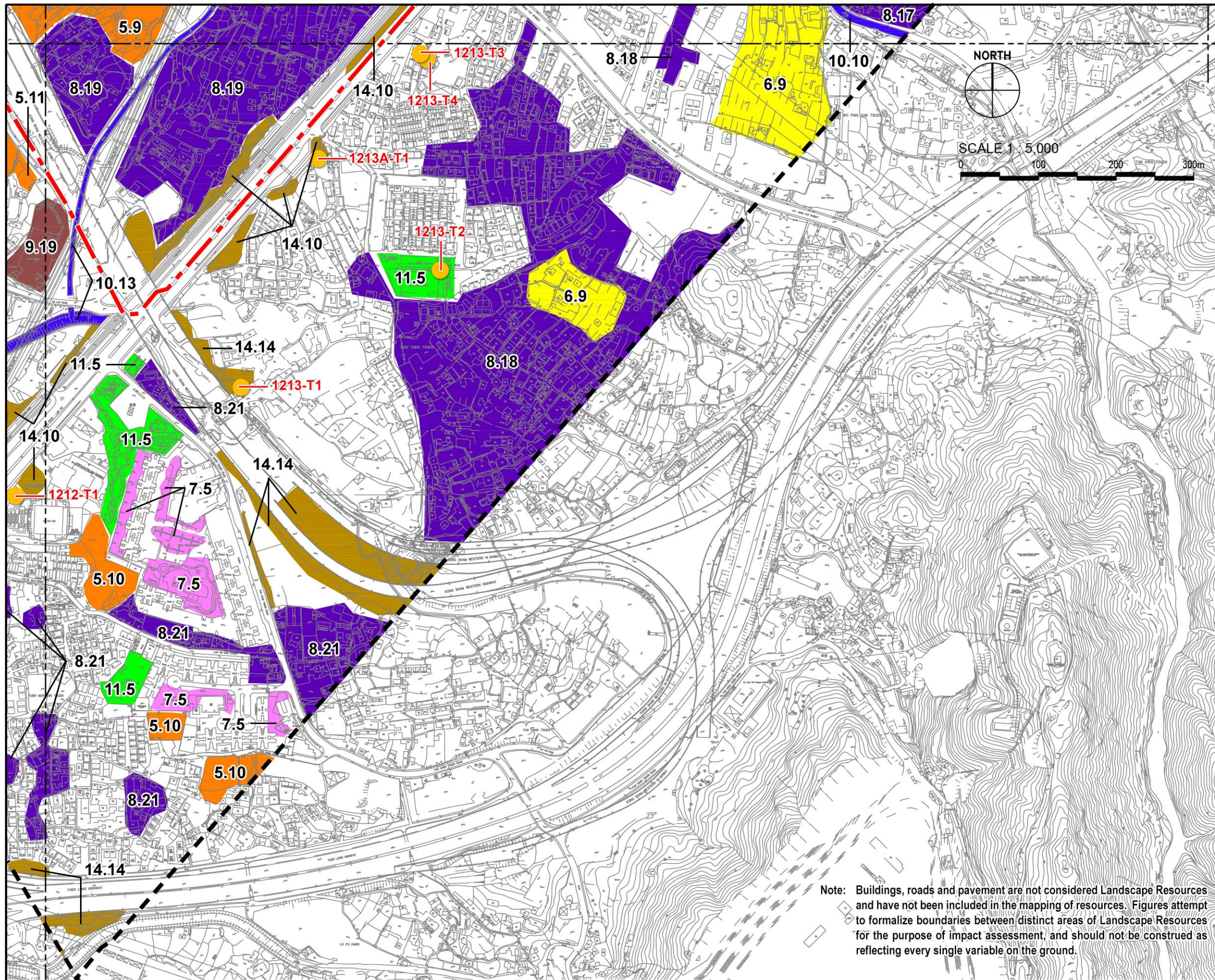
	LR1 COASTAL WATERS & MUDFLATS = 626,041 SQM
	LR2 HILLSIDE WOODLAND = 2,724,784 SQM
	LR3 HILLSIDE SHRUB & GRASSLAND = 1,318,763 SQM
	LR4 LOW-LYING WOODLAND/PLANTATION = 359,258 SQ.M
	LR5 LOW-LYING SHRUB & GRASSLAND = 406,307 SQ.M
	LR6 VEGETATION ON AGRICULTURAL LAND = 528,982 SQM
	LR7 VEGETATION WITHIN RESIDENTIAL DEVELOPMENTS = 193,841 SQM
	LR8 VEGETATION WITHIN RURAL VILLAGE = 1,101,782 SQM
	LR9 VEGETATION WITHIN INDUSTRIAL LAND & OPEN STORAGE = 1,063,691 SQM
	LR10 WATERCOURSE = 284,738 SQ.M
	LR11 VEGETATION WITHIN URBAN PARKS = 117,737 SQM
	LR12 VEGETATION ON MODIFIED SLOPES = 286,152 SQM
	LR13 VEGETATION ALONG TIN SHUI WAI PROMENADE = 43,546 SQM
	LR14 ROADSIDE VEGETATION = 449,637 SQM
	LR15 WATERBODIES = 68,661 SQ.M
	LR16 MANGROVES = 110,582 SQM
	LR17 MARSH = 14,981 SQM
	LR18 IMPORTANT TREE = 91 NOS.

Note: Buildings, roads and pavement are not considered Landscape Resources and have not been included in the mapping of resources. Figures attempt to formalize boundaries between distinct areas of Landscape Resources for the purpose of impact assessment, and should not be construed as reflecting every single variable on the ground.



Agreement No. CE 2/2011 (CE)
Hung Shui Kiu New Development Area Planning and Engineering Study - Investigation
Landscape Resource Enlargement Plan 14

SCALE	1:5,000@A3	DATE	AUG 2016
CHECK	AM	DRAWN	LW
JOB No.	60222570	FIGURE	11.1n
		REV	



LEGEND

- 500m Assessment Area Boundary
- - - Project Boundary

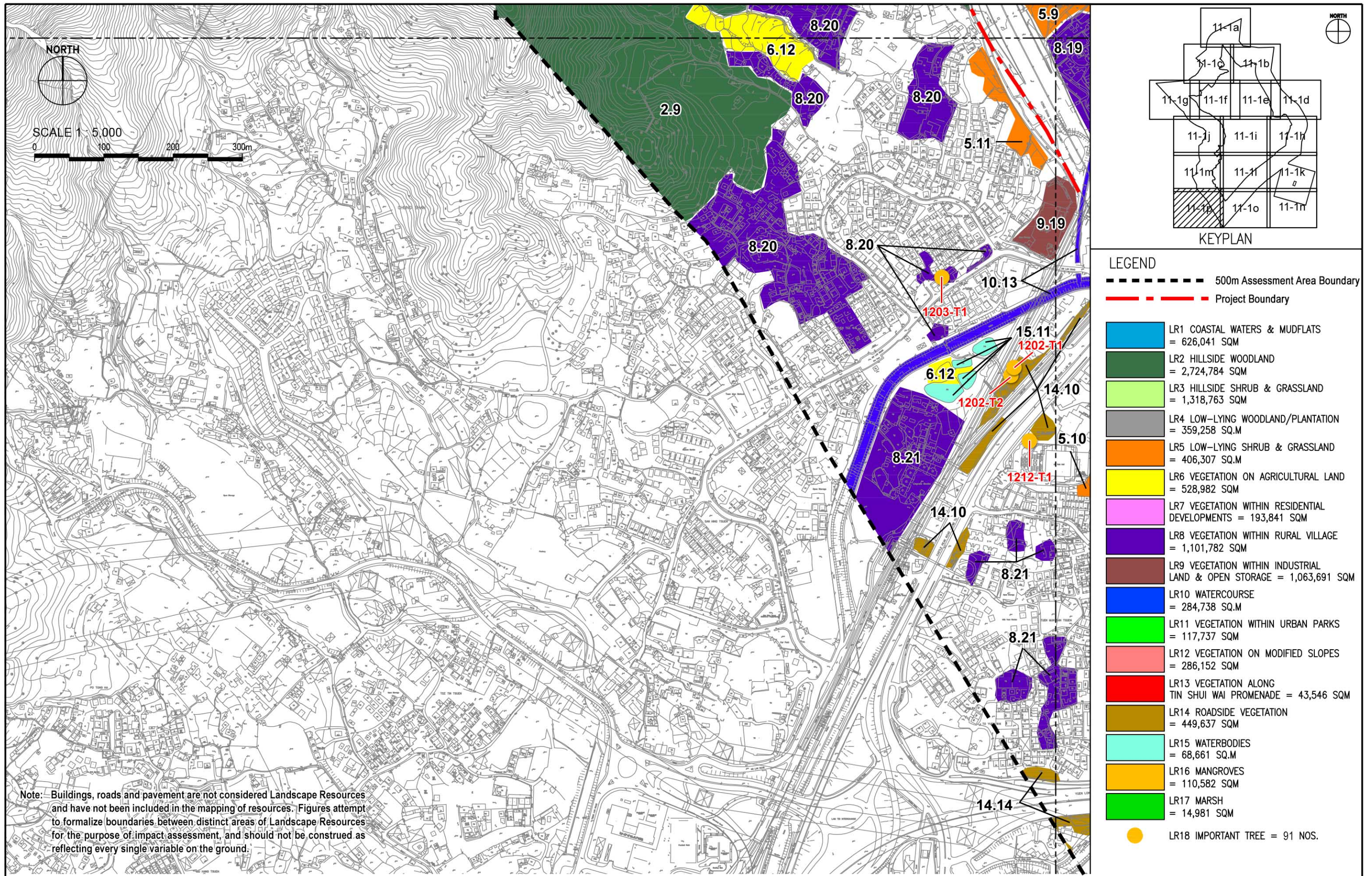
	LR1 COASTAL WATERS & MUDFLATS = 626,041 SQM
	LR2 HILLSIDE WOODLAND = 2,724,784 SQM
	LR3 HILLSIDE SHRUB & GRASSLAND = 1,318,763 SQM
	LR4 LOW-LYING WOODLAND/PLANTATION = 359,258 SQ.M
	LR5 LOW-LYING SHRUB & GRASSLAND = 406,307 SQ.M
	LR6 VEGETATION ON AGRICULTURAL LAND = 528,982 SQM
	LR7 VEGETATION WITHIN RESIDENTIAL DEVELOPMENTS = 193,841 SQM
	LR8 VEGETATION WITHIN RURAL VILLAGE = 1,101,782 SQM
	LR9 VEGETATION WITHIN INDUSTRIAL LAND & OPEN STORAGE = 1,063,691 SQM
	LR10 WATERCOURSE = 284,738 SQ.M
	LR11 VEGETATION WITHIN URBAN PARKS = 117,737 SQM
	LR12 VEGETATION ON MODIFIED SLOPES = 286,152 SQM
	LR13 VEGETATION ALONG TIN SHUI WAI PROMENADE = 43,546 SQM
	LR14 ROADSIDE VEGETATION = 449,637 SQM
	LR15 WATERBODIES = 68,661 SQ.M
	LR16 MANGROVES = 110,582 SQM
	LR17 MARSH = 14,981 SQM
	LR18 IMPORTANT TREE = 91 NOS.

Note: Buildings, roads and pavement are not considered Landscape Resources and have not been included in the mapping of resources. Figures attempt to formalize boundaries between distinct areas of Landscape Resources for the purpose of impact assessment, and should not be construed as reflecting every single variable on the ground.



Agreement No. CE 2/2011 (CE)
 Hung Shui Kiu New Development Area Planning and Engineering Study - Investigation
Landscape Resource Enlargement Plan 15

SCALE	1:5,000@A3	DATE	AUG 2016
CHECK	AM	DRAWN	LW
JOB No.	60222570	FIGURE	11.1o
		REV	



Agreement No. CE 2/2011 (CE)
 Hung Shui Kiu New Development Area Planning and Engineering Study - Investigation
Landscape Resource Enlargement Plan 16



SCALE	1:5,000@A3	DATE	JUL 2016
CHECK	AM	DRAWN	LW
JOB No.	60222570	FIGURE	11.1p
		REV	