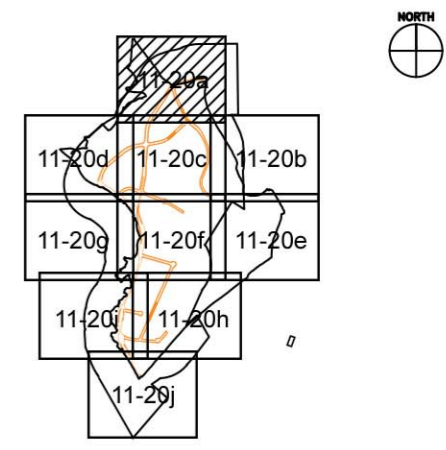
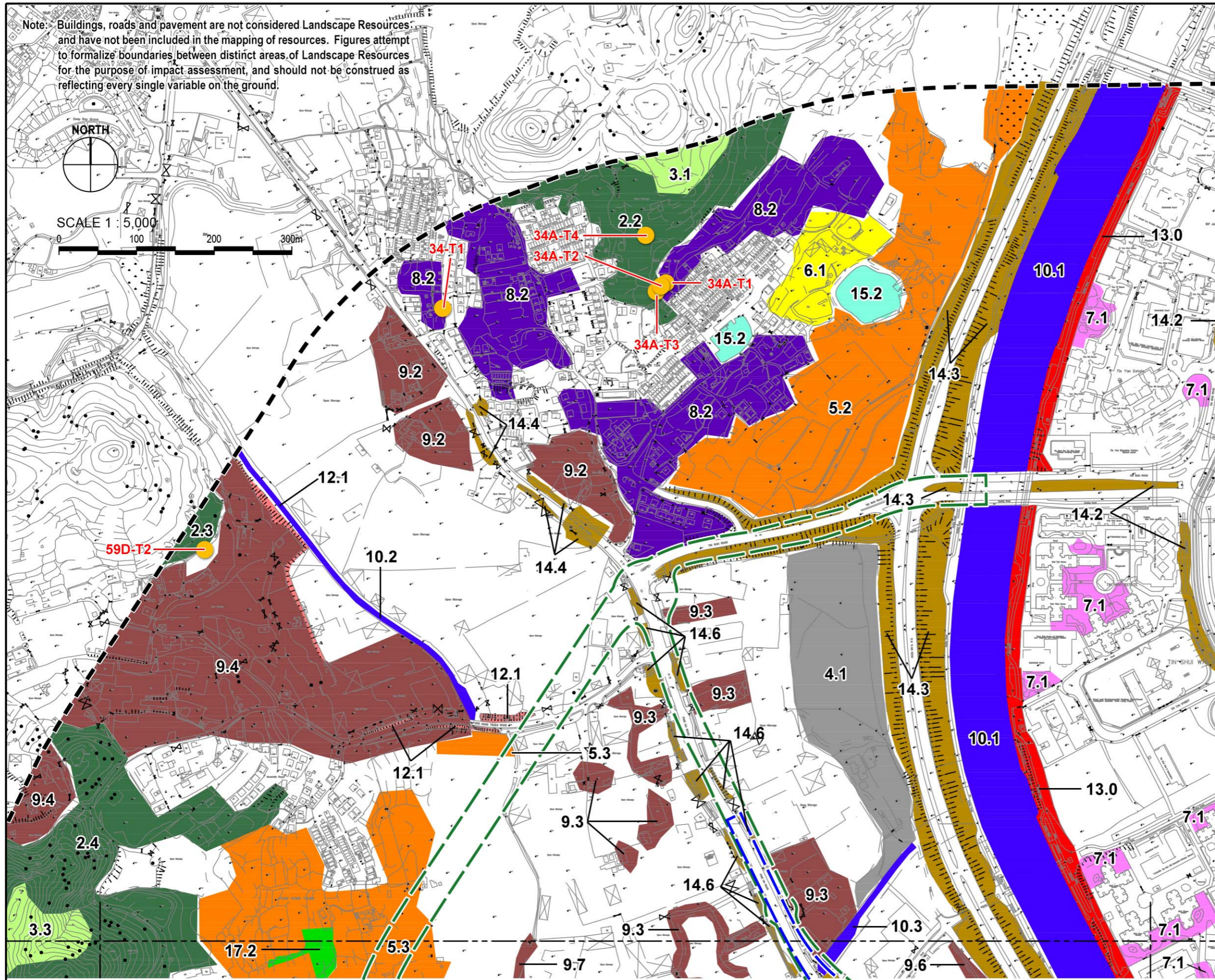


Note: Buildings, roads and pavement are not considered Landscape Resources and have not been included in the mapping of resources. Figures attempt to formalize boundaries between distinct areas of Landscape Resources for the purpose of impact assessment, and should not be construed as reflecting every single variable on the ground.



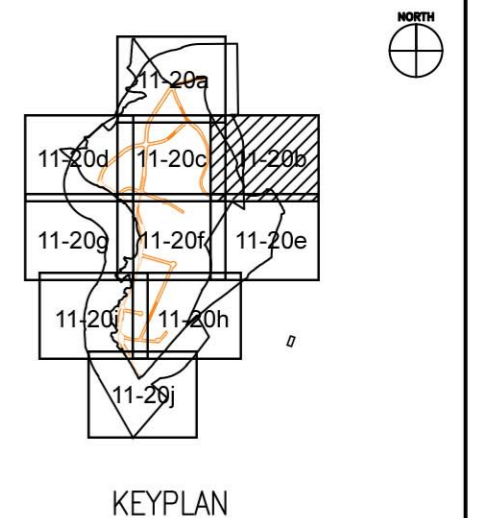
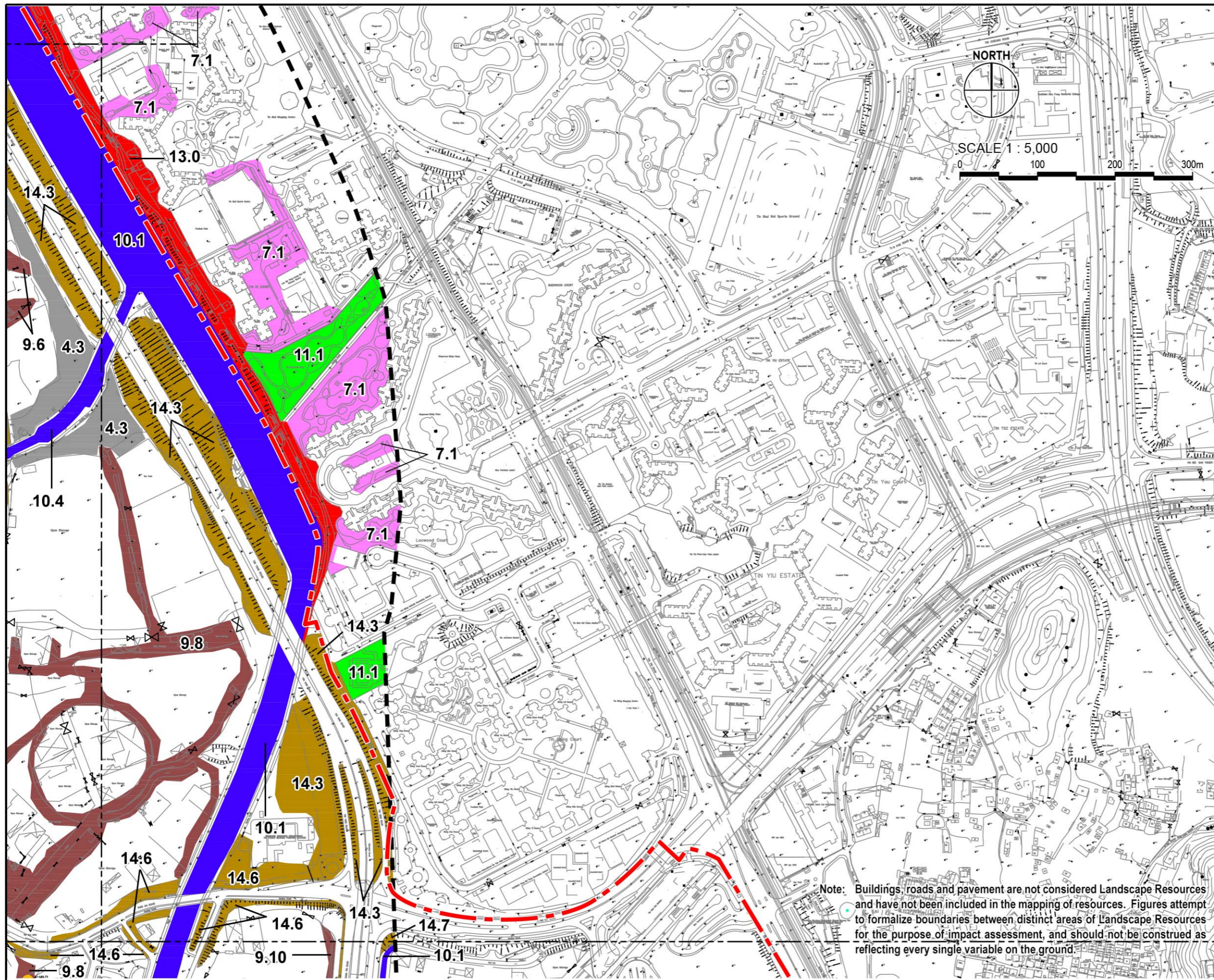
KEYPLAN

- LEGEND**
- 500m Assessment Area Boundary
 - Project Boundary
 - DP1
 - DP2
 - DP5
 - DP6
 - DP12
 - LR2 HILLSIDE WOODLAND = 1468135 SQM
 - LR3 HILLSIDE SHRUB & GRASSLAND = 510110 SQM
 - LR4 LOW-LYING WOODLAND/PLANTATION = 218,126 SQ.M
 - LR5 LOW-LYING SHRUB & GRASSLAND = 368,806 SQ.M
 - LR6 VEGETATION ON AGRICULTURAL LAND = 375361 SQM
 - LR7 VEGETATION WITHIN RESIDENTIAL DEVELOPMENTS = 69760 SQM
 - LR8 VEGETATION WITHIN RURAL RESIDENTIAL = 691936 SQM
 - LR9 VEGETATION WITHIN INDUSTRIAL LAND & OPEN STORAGE = 567248 SQM
 - LR10 WATER COURSE = 237,365 SQ.M
 - LR11 VEGETATION WITHIN URBAN PARK = 32128 SQM
 - LR12 VEGETATION ON MODIFIED SLOPES = 45759 SQM
 - LR13 VEGETATION ALONG TIN SHUI WAI PROMENADE = 43546 SQM
 - LR14 ROADSIDE VEGETATION = 236427 SQM
 - LR15 WATER BODY = 30,869 SQ.M
 - LR17 MARSH = 6209 SQM
 - LR18 IMPORTANT TREE = 66 NOS.



Agreement No. CE 2/2011 (CE)
 Hung Shui Kiu New Development Area Planning and Engineering Study - Investigation
Landscape Resource Enlargement Plan 01

SCALE	1:5,000@A3	DATE	AUG 2016
CHECK	AM	DRAWN	LW
JOB No.	60222570	FIGURE	11.20a
		REV	



LEGEND

- 500m Assessment Area Boundary
- - - Project Boundary
- - - DP1
- - - DP2
- - - DP5
- - - DP6
- - - DP12

- LR2 HILLSIDE WOODLAND = 1468135 SQM
- LR3 HILLSIDE SHRUB & GRASSLAND = 510110 SQM
- LR4 LOW-LYING WOODLAND/PLANTATION = 218,126 SQ.M
- LR5 LOW-LYING SHRUB & GRASSLAND = 368,806 SQ.M
- LR6 VEGETATION ON AGRICULTURAL LAND = 375361 SQM
- LR7 VEGETATION WITHIN RESIDENTIAL DEVELOPMENTS = 69760 SQM
- LR8 VEGETATION WITHIN RURAL RESIDENTIAL = 691936 SQM
- LR9 VEGETATION WITHIN INDUSTRIAL LAND & OPEN STORAGE = 567248 SQM
- LR10 WATER COURSE = 237,365 SQ.M
- LR11 VEGETATION WITHIN URBAN PARK = 32128 SQM
- LR12 VEGETATION ON MODIFIED SLOPES = 45759 SQM
- LR13 VEGETATION ALONG TIN SHUI WAI PROMENADE = 43546 SQM
- LR14 ROADSIDE VEGETATION = 236427 SQM
- LR15 WATER BODY = 30,869 SQ.M
- LR17 MARSH = 6209 SQM
- LR18 IMPORTANT TREE = 66 NOS.

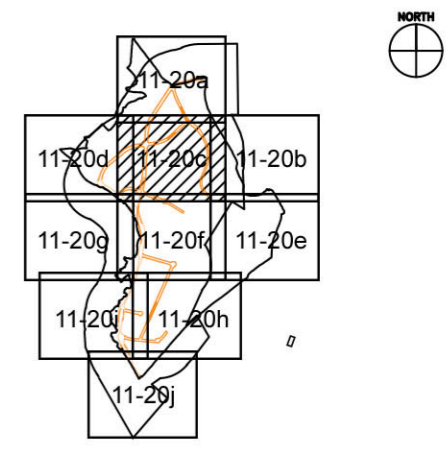
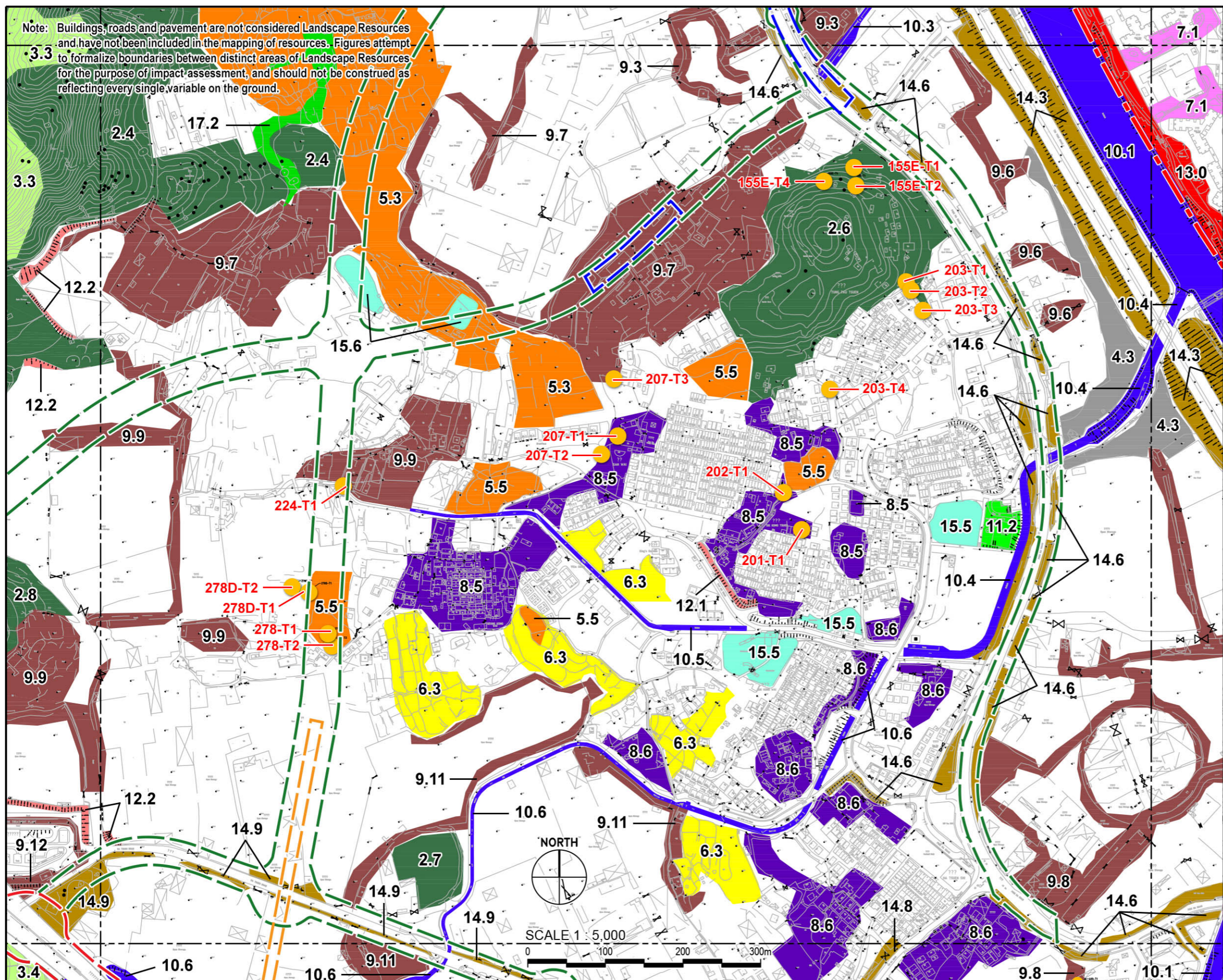
Note: Buildings, roads and pavement are not considered Landscape Resources and have not been included in the mapping of resources. Figures attempt to formalize boundaries between distinct areas of Landscape Resources for the purpose of impact assessment, and should not be construed as reflecting every single variable on the ground.



Agreement No. CE 2/2011 (CE)
 Hung Shui Kiu New Development Area Planning and Engineering Study - Investigation
Landscape Resource Enlargement Plan 02

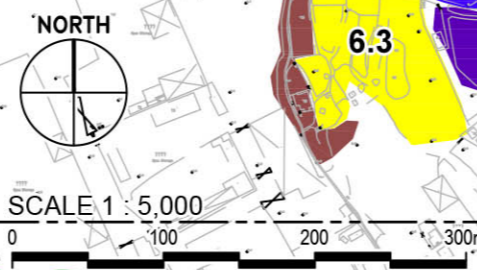
SCALE	1:5,000@A3	DATE	AUG 2016
CHECK	AM	DRAWN	LW
JOB No.	60222570	FIGURE	11.20b
		REV	

Note: Buildings, roads and pavement are not considered Landscape Resources and have not been included in the mapping of resources. Figures attempt to formalize boundaries between distinct areas of Landscape Resources for the purpose of impact assessment, and should not be construed as reflecting every single variable on the ground.



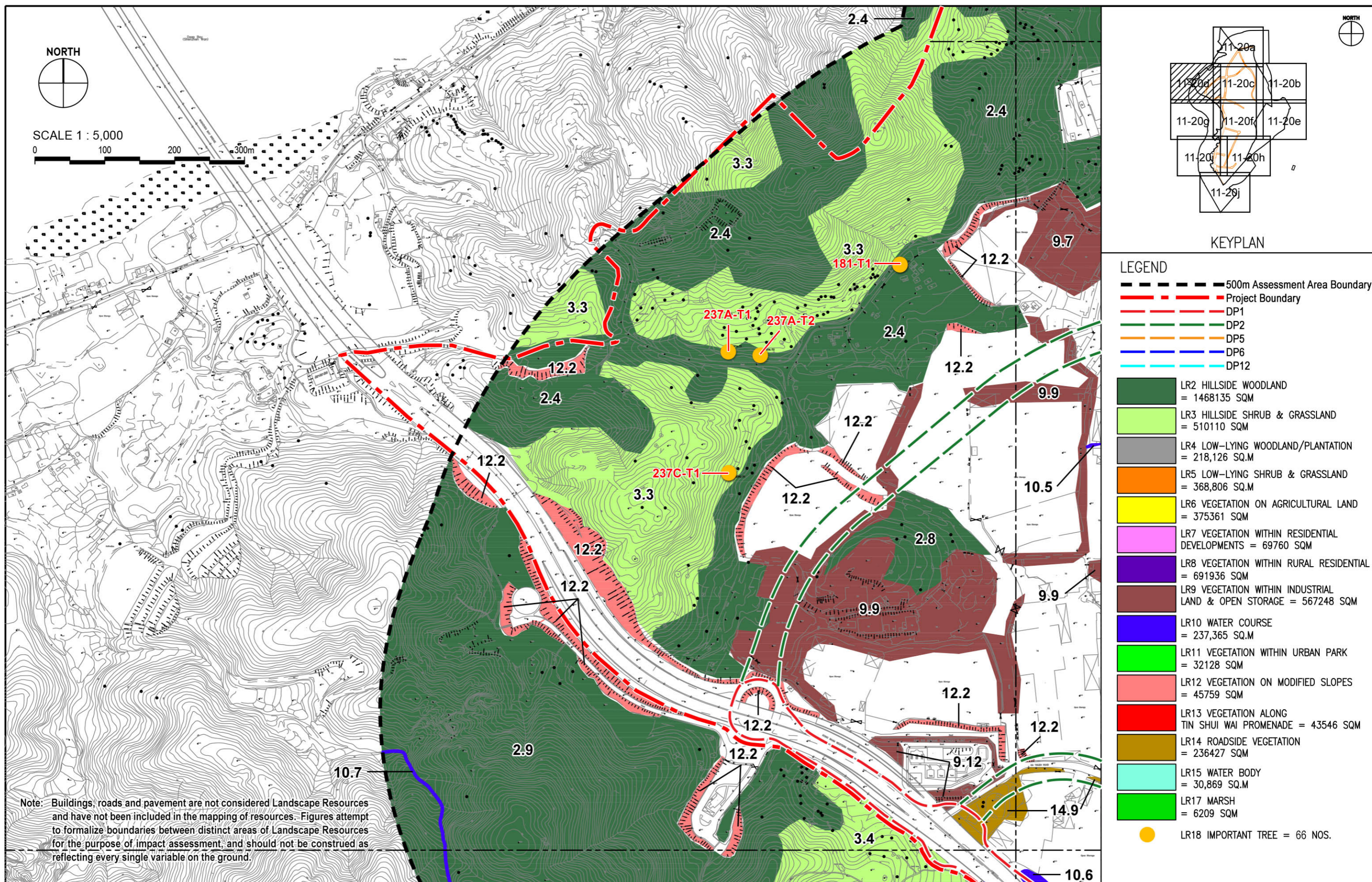
KEYPLAN

- LEGEND**
- 500m Assessment Area Boundary
 - Project Boundary
 - DP1
 - DP2
 - DP5
 - DP6
 - DP12
 - LR2 HILLSIDE WOODLAND = 1468135 SQM
 - LR3 HILLSIDE SHRUB & GRASSLAND = 510110 SQM
 - LR4 LOW-LYING WOODLAND/PLANTATION = 218,126 SQ.M
 - LR5 LOW-LYING SHRUB & GRASSLAND = 368,806 SQ.M
 - LR6 VEGETATION ON AGRICULTURAL LAND = 375361 SQM
 - LR7 VEGETATION WITHIN RESIDENTIAL DEVELOPMENTS = 69760 SQM
 - LR8 VEGETATION WITHIN RURAL RESIDENTIAL = 691936 SQM
 - LR9 VEGETATION WITHIN INDUSTRIAL LAND & OPEN STORAGE = 567248 SQM
 - LR10 WATER COURSE = 237,365 SQ.M
 - LR11 VEGETATION WITHIN URBAN PARK = 32128 SQM
 - LR12 VEGETATION ON MODIFIED SLOPES = 45759 SQM
 - LR13 VEGETATION ALONG TIN SHUI WAI PROMENADE = 43546 SQM
 - LR14 ROADSIDE VEGETATION = 236427 SQM
 - LR15 WATER BODY = 30,869 SQ.M
 - LR17 MARSH = 6209 SQM
 - LR18 IMPORTANT TREE = 66 NOS.



Agreement No. CE 2/2011 (CE)
 Hung Shui Kiu New Development Area Planning and Engineering Study - Investigation
Landscape Resource Enlargement Plan 03

SCALE	1:5,000@A3	DATE	AUG 2016
CHECK	AM	DRAWN	LW
JOB No.	60222570	FIGURE	11.20c
		REV	



Note: Buildings, roads and pavement are not considered Landscape Resources and have not been included in the mapping of resources. Figures attempt to formalize boundaries between distinct areas of Landscape Resources for the purpose of impact assessment, and should not be construed as reflecting every single variable on the ground.

LEGEND

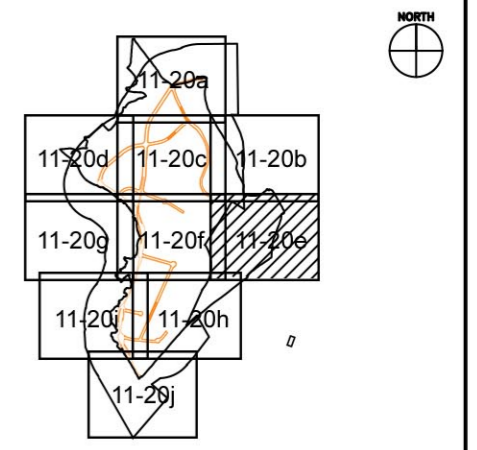
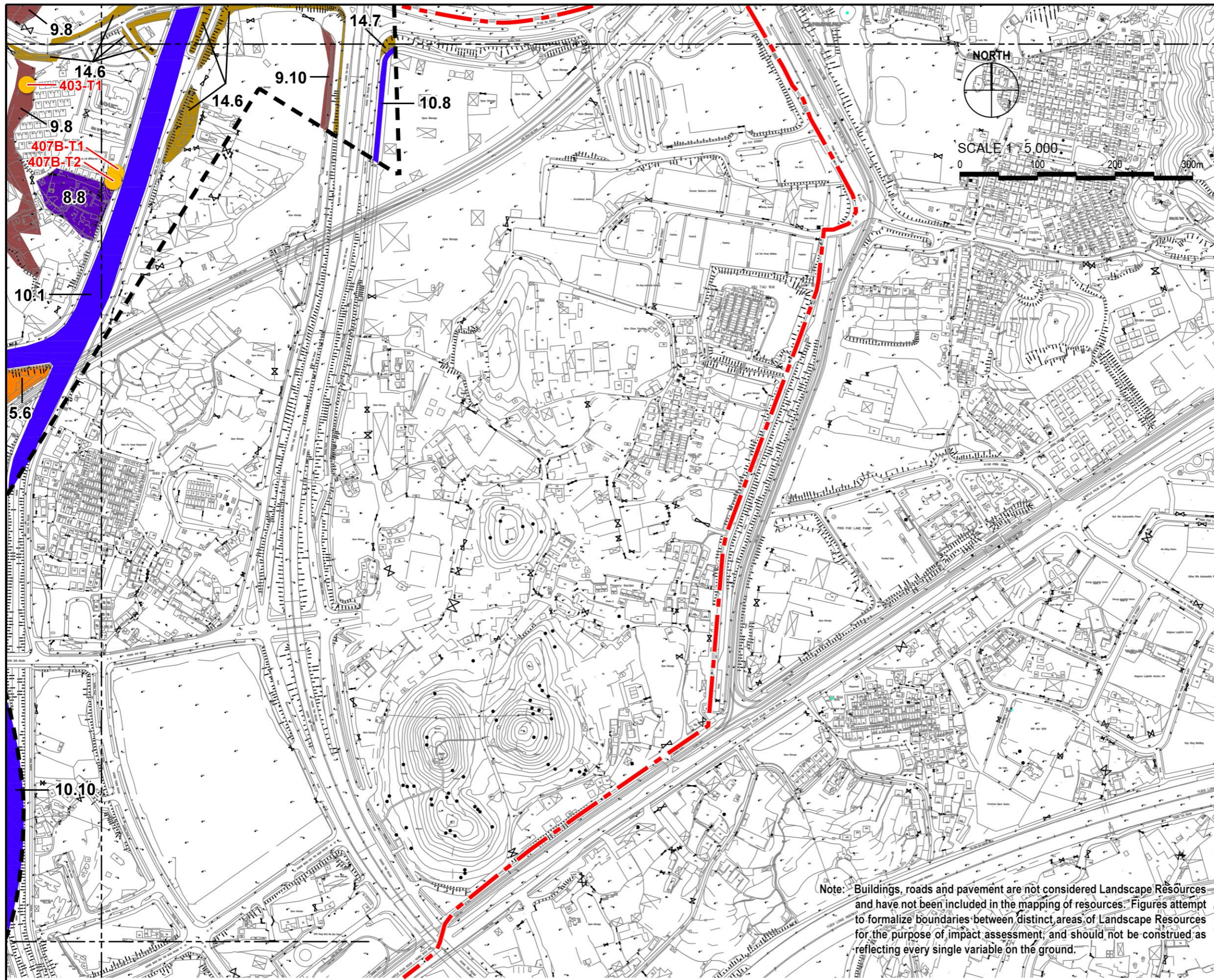
- 500m Assessment Area Boundary
- Project Boundary
- DP1
- DP2
- DP5
- DP6
- DP12

- LR2 HILLSIDE WOODLAND = 1468135 SQM
- LR3 HILLSIDE SHRUB & GRASSLAND = 510110 SQM
- LR4 LOW-LYING WOODLAND/PLANTATION = 218,126 SQ.M
- LR5 LOW-LYING SHRUB & GRASSLAND = 368,806 SQ.M
- LR6 VEGETATION ON AGRICULTURAL LAND = 375361 SQM
- LR7 VEGETATION WITHIN RESIDENTIAL DEVELOPMENTS = 69760 SQM
- LR8 VEGETATION WITHIN RURAL RESIDENTIAL = 691936 SQM
- LR9 VEGETATION WITHIN INDUSTRIAL LAND & OPEN STORAGE = 567248 SQM
- LR10 WATER COURSE = 237,365 SQ.M
- LR11 VEGETATION WITHIN URBAN PARK = 32128 SQM
- LR12 VEGETATION ON MODIFIED SLOPES = 45759 SQM
- LR13 VEGETATION ALONG TIN SHUI WAI PROMENADE = 43546 SQM
- LR14 ROADSIDE VEGETATION = 236427 SQM
- LR15 WATER BODY = 30,869 SQ.M
- LR17 MARSH = 6209 SQM
- LR18 IMPORTANT TREE = 66 NOS.



Agreement No. CE 2/2011 (CE)
 Hung Shui Kiu New Development Area Planning and Engineering Study - Investigation
Landscape Resource Enlargement Plan 04

SCALE	1:5,000@A3	DATE	AUG 2016
CHECK	AM	DRAWN	LW
JOB No.	60222570	FIGURE	11.20d
		REV	



KEYPLAN

LEGEND

- 500m Assessment Area Boundary
- Project Boundary
- DP1
- DP2
- DP5
- DP6
- DP12

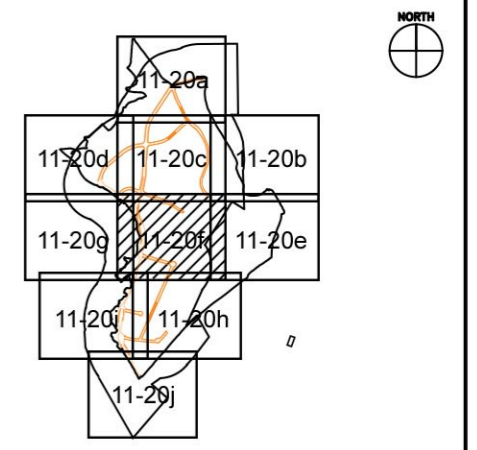
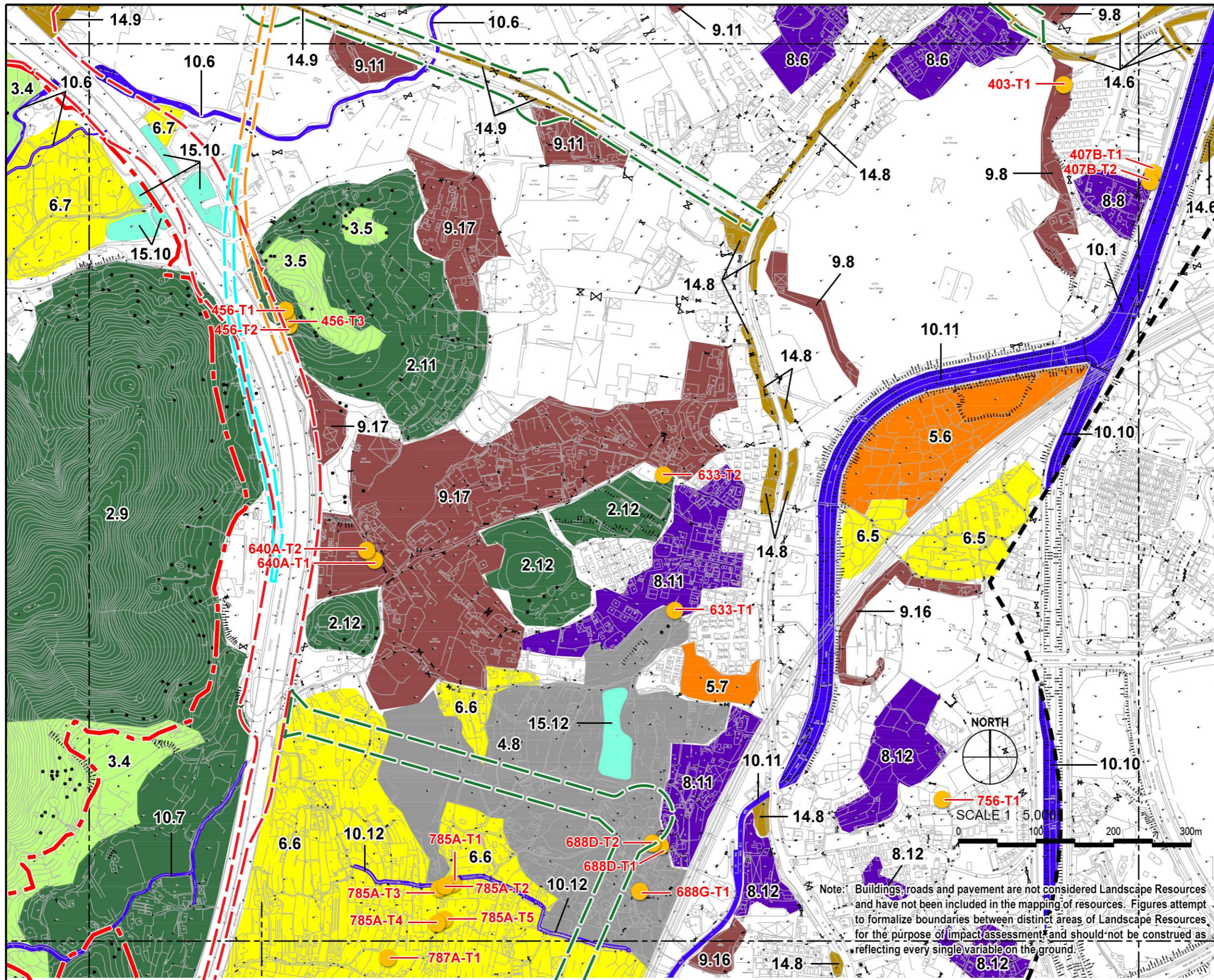
- LR2 HILLSIDE WOODLAND = 1468135 SQM
- LR3 HILLSIDE SHRUB & GRASSLAND = 510110 SQM
- LR4 LOW-LYING WOODLAND/PLANTATION = 218,126 SQ.M
- LR5 LOW-LYING SHRUB & GRASSLAND = 368,806 SQ.M
- LR6 VEGETATION ON AGRICULTURAL LAND = 375361 SQM
- LR7 VEGETATION WITHIN RESIDENTIAL DEVELOPMENTS = 69760 SQM
- LR8 VEGETATION WITHIN RURAL RESIDENTIAL = 691936 SQM
- LR9 VEGETATION WITHIN INDUSTRIAL LAND & OPEN STORAGE = 567248 SQM
- LR10 WATER COURSE = 237,365 SQ.M
- LR11 VEGETATION WITHIN URBAN PARK = 32128 SQM
- LR12 VEGETATION ON MODIFIED SLOPES = 45759 SQM
- LR13 VEGETATION ALONG TIN SHUI WAI PROMENADE = 43546 SQM
- LR14 ROADSIDE VEGETATION = 236427 SQM
- LR15 WATER BODY = 30,869 SQ.M
- LR17 MARSH = 6209 SQM
- LR18 IMPORTANT TREE = 66 NOS.

Note: Buildings, roads and pavement are not considered Landscape Resources and have not been included in the mapping of resources. Figures attempt to formalize boundaries between distinct areas of Landscape Resources for the purpose of impact assessment, and should not be construed as reflecting every single variable on the ground.



Agreement No. CE 2/2011 (CE)
 Hung Shui Kiu New Development Area Planning and Engineering Study - Investigation
Landscape Resource Enlargement Plan 05

SCALE	1:5,000@A3	DATE	AUG 2016
CHECK	AM	DRAWN	LW
JOB No.	60222570	FIGURE	11.20e
		REV	



KEYPLAN

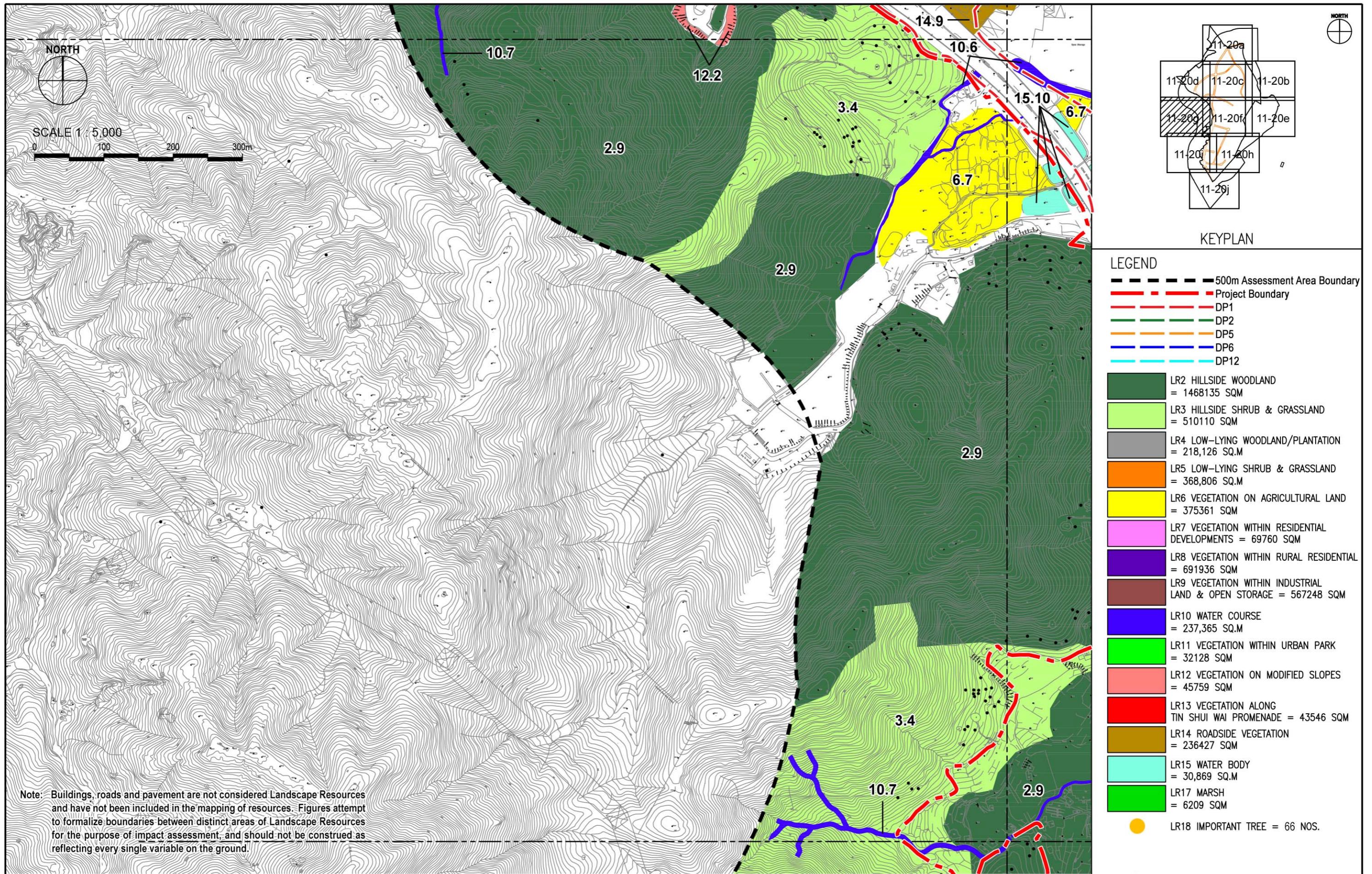
- LEGEND**
- 500m Assessment Area Boundary
 - - - Project Boundary
 - - - DP1
 - - - DP2
 - - - DP5
 - - - DP6
 - - - DP12
 - LR2 HILLSIDE WOODLAND = 1468135 SQM
 - LR3 HILLSIDE SHRUB & GRASSLAND = 510110 SQM
 - LR4 LOW-LYING WOODLAND/PLANTATION = 218,126 SQ.M
 - LR5 LOW-LYING SHRUB & GRASSLAND = 368,806 SQ.M
 - LR6 VEGETATION ON AGRICULTURAL LAND = 375361 SQM
 - LR7 VEGETATION WITHIN RESIDENTIAL DEVELOPMENTS = 69760 SQM
 - LR8 VEGETATION WITHIN RURAL RESIDENTIAL = 691936 SQM
 - LR9 VEGETATION WITHIN INDUSTRIAL LAND & OPEN STORAGE = 567248 SQM
 - LR10 WATER COURSE = 237,365 SQ.M
 - LR11 VEGETATION WITHIN URBAN PARK = 32128 SQM
 - LR12 VEGETATION ON MODIFIED SLOPES = 45759 SQM
 - LR13 VEGETATION ALONG TIN SHUI WAI PROMENADE = 43546 SQM
 - LR14 ROADSIDE VEGETATION = 236427 SQM
 - LR15 WATER BODY = 30,869 SQ.M
 - LR17 MARSH = 6209 SQM
 - LR18 IMPORTANT TREE = 66 NOS.

Note: Buildings, roads and pavement are not considered Landscape Resources and have not been included in the mapping of resources. Figures attempt to formalize boundaries between distinct areas of Landscape Resources for the purpose of impact assessment and should not be construed as reflecting every single variable on the ground.



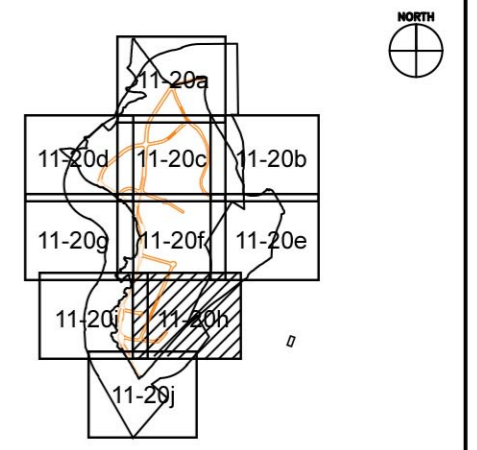
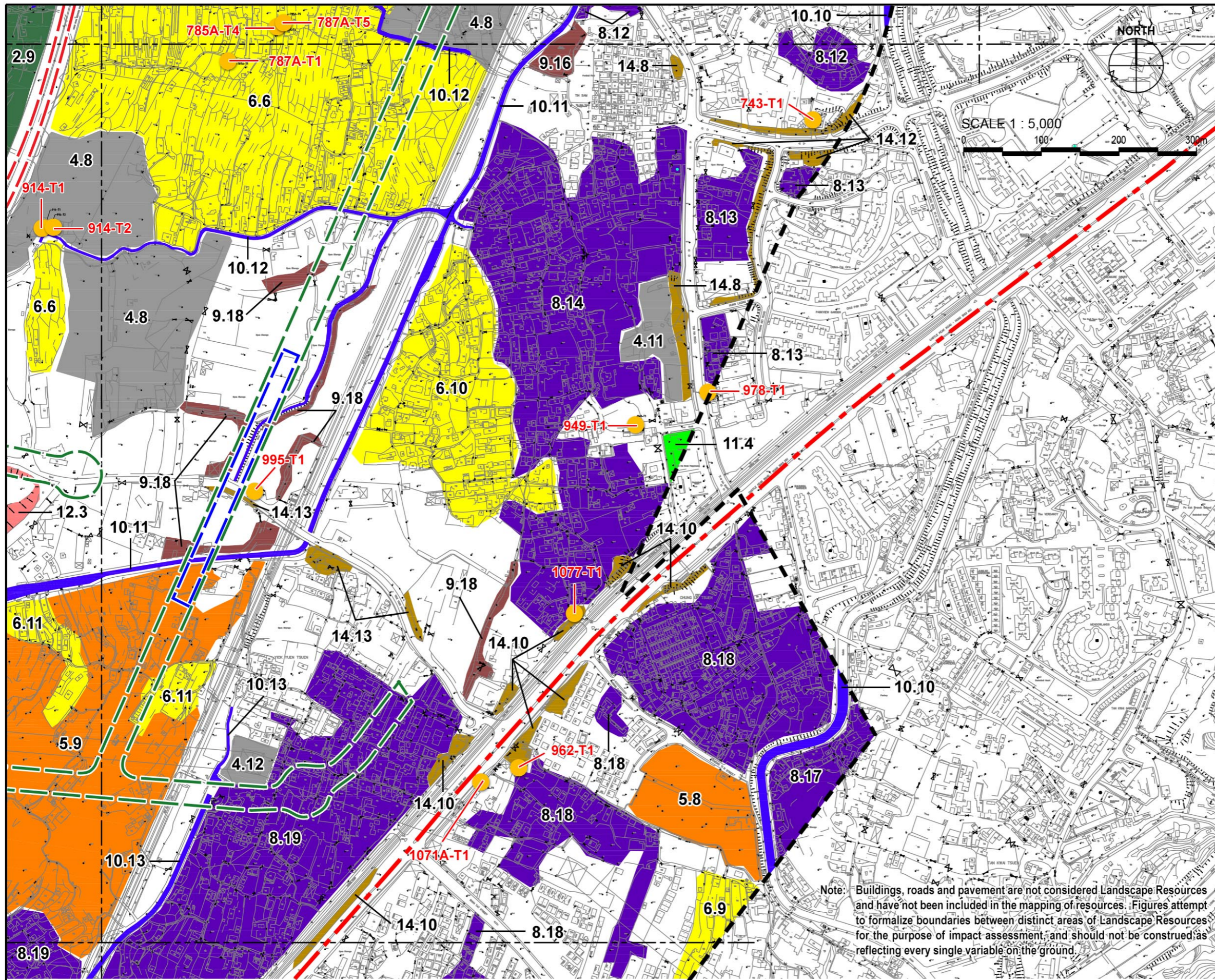
Agreement No. CE 2/2011 (CE)
 Hung Shui Kiu New Development Area Planning and Engineering Study - Investigation
Landscape Resource Enlargement Plan 06

SCALE	1:5,000@A3	DATE	AUG 2016
CHECK	AM	DRAWN	LW
JOB No.	60222570	FIGURE	11.20f
		REV	



Agreement No. CE 2/2011 (CE)
 Hung Shui Kiu New Development Area Planning and Engineering Study - Investigation
Landscape Resource Enlargement Plan 07

SCALE	1:5,000@A3	DATE	AUG 2016
CHECK	AM	DRAWN	LW
JOB No.	60222570	FIGURE	11.20g
		REV	



KEYPLAN

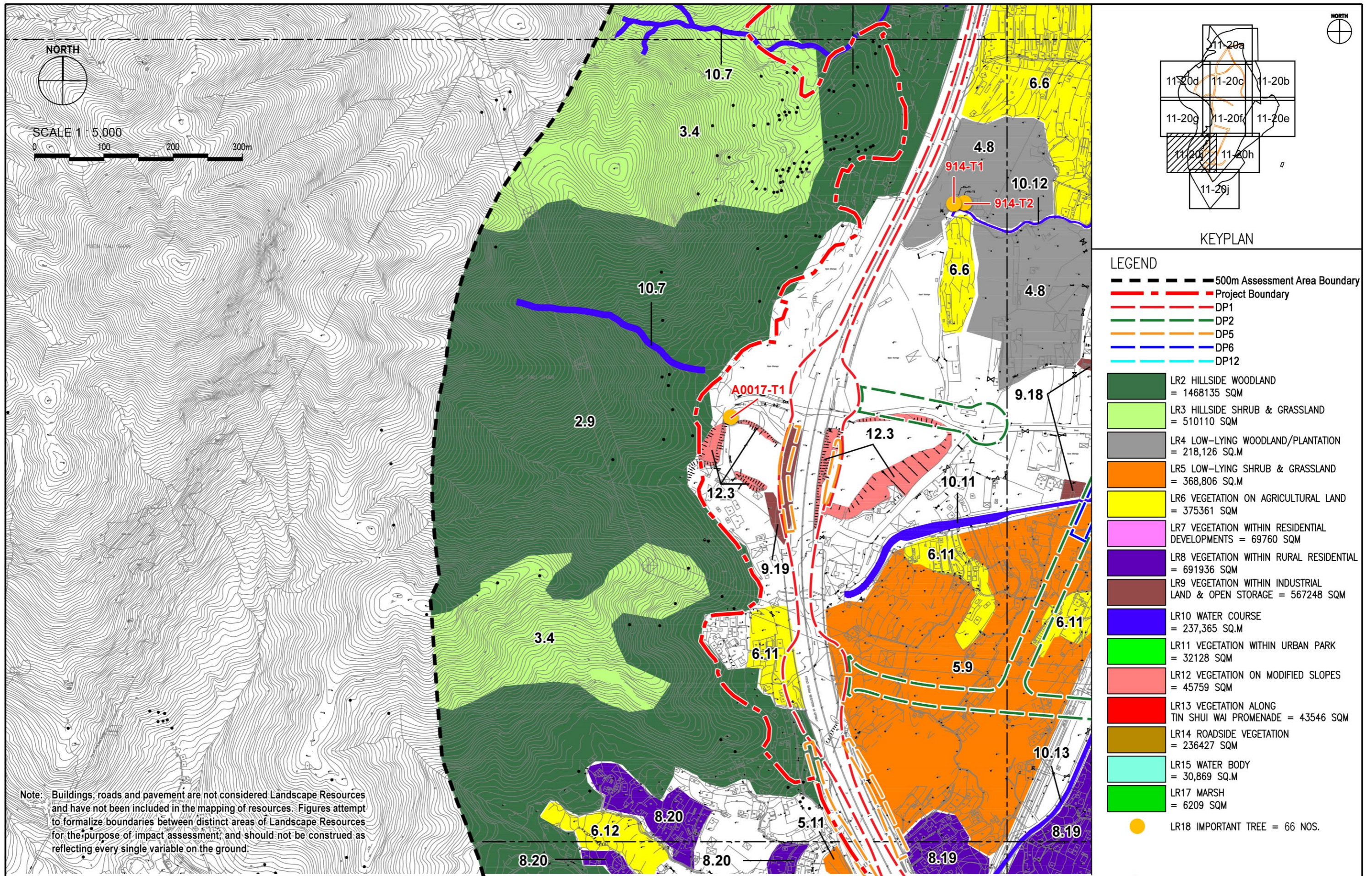
- LEGEND**
- 500m Assessment Area Boundary
 - - - Project Boundary
 - - - DP1
 - - - DP2
 - - - DP5
 - - - DP6
 - - - DP12
 - LR2 HILLSIDE WOODLAND = 1468135 SQM
 - LR3 HILLSIDE SHRUB & GRASSLAND = 510110 SQM
 - LR4 LOW-LYING WOODLAND/PLANTATION = 218,126 SQ.M
 - LR5 LOW-LYING SHRUB & GRASSLAND = 368,806 SQ.M
 - LR6 VEGETATION ON AGRICULTURAL LAND = 375361 SQM
 - LR7 VEGETATION WITHIN RESIDENTIAL DEVELOPMENTS = 69760 SQM
 - LR8 VEGETATION WITHIN RURAL RESIDENTIAL = 691936 SQM
 - LR9 VEGETATION WITHIN INDUSTRIAL LAND & OPEN STORAGE = 567248 SQM
 - LR10 WATER COURSE = 237,365 SQ.M
 - LR11 VEGETATION WITHIN URBAN PARK = 32128 SQM
 - LR12 VEGETATION ON MODIFIED SLOPES = 45759 SQM
 - LR13 VEGETATION ALONG TIN SHUI WAI PROMENADE = 43546 SQM
 - LR14 ROADSIDE VEGETATION = 236427 SQM
 - LR15 WATER BODY = 30,869 SQ.M
 - LR17 MARSH = 6209 SQM
 - LR18 IMPORTANT TREE = 66 NOS.

Note: Buildings, roads and pavement are not considered Landscape Resources and have not been included in the mapping of resources. Figures attempt to formalize boundaries between distinct areas of Landscape Resources for the purpose of impact assessment, and should not be construed as reflecting every single variable on the ground.



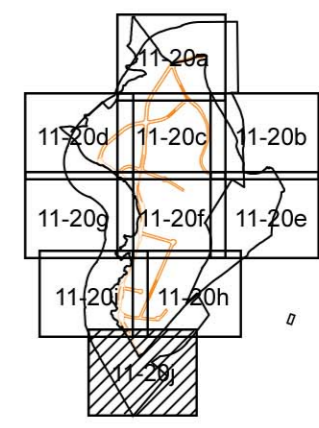
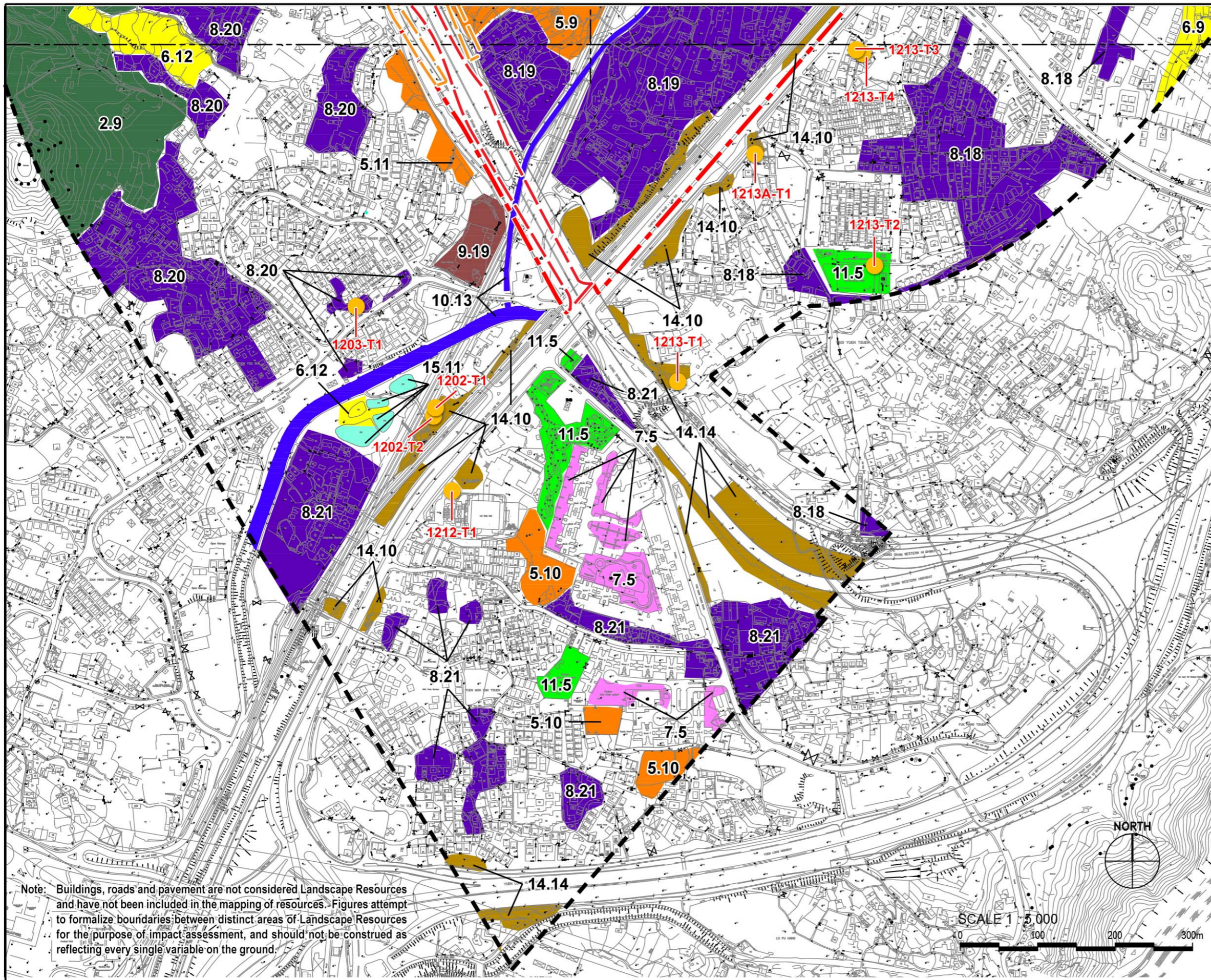
Agreement No. CE 2/2011 (CE)
 Hung Shui Kiu New Development Area Planning and Engineering Study - Investigation
Landscape Resource Enlargement Plan 08

SCALE	1:5,000@A3	DATE	AUG 2016
CHECK	AM	DRAWN	LW
JOB No.	60222570	FIGURE	11.20h
		REV	



Agreement No. CE 2/2011 (CE)
 Hung Shui Kiu New Development Area Planning and Engineering Study - Investigation
Landscape Resource Enlargement Plan 09

SCALE	1:5,000@A3	DATE	AUG 2016
CHECK	AM	DRAWN	LW
JOB No.	60222570	FIGURE	11.20i
		REV	



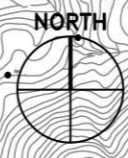
LEGEND

- 500m Assessment Area Boundary
- Project Boundary
- DP1
- DP2
- DP5
- DP6
- DP12

- LR2 HILLSIDE WOODLAND = 1468135 SQM
- LR3 HILLSIDE SHRUB & GRASSLAND = 510110 SQM
- LR4 LOW-LYING WOODLAND/PLANTATION = 218,126 SQ.M
- LR5 LOW-LYING SHRUB & GRASSLAND = 368,806 SQ.M
- LR6 VEGETATION ON AGRICULTURAL LAND = 375361 SQM
- LR7 VEGETATION WITHIN RESIDENTIAL DEVELOPMENTS = 69760 SQM
- LR8 VEGETATION WITHIN RURAL RESIDENTIAL = 691936 SQM
- LR9 VEGETATION WITHIN INDUSTRIAL LAND & OPEN STORAGE = 567248 SQM
- LR10 WATER COURSE = 237,365 SQ.M
- LR11 VEGETATION WITHIN URBAN PARK = 32128 SQM
- LR12 VEGETATION ON MODIFIED SLOPES = 45759 SQM
- LR13 VEGETATION ALONG TIN SHUI WAI PROMENADE = 43546 SQM
- LR14 ROADSIDE VEGETATION = 236427 SQM
- LR15 WATER BODY = 30,869 SQ.M
- LR17 MARSH = 6209 SQM
- LR18 IMPORTANT TREE = 66 NOS.

Note: Buildings, roads and pavement are not considered Landscape Resources and have not been included in the mapping of resources. Figures attempt to formalize boundaries between distinct areas of Landscape Resources for the purpose of impact assessment, and should not be construed as reflecting every single variable on the ground.

SCALE 1:5,000
0 100 200 300m



Agreement No. CE 2/2011 (CE)
Hung Shui Kiu New Development Area Planning and Engineering Study - Investigation
Landscape Resource Enlargement Plan 10

SCALE	1:5,000@A3	DATE	AUG 2016
CHECK	AM	DRAWN	LW
JOB No.	60222570	FIGURE	11.20j
		REV	