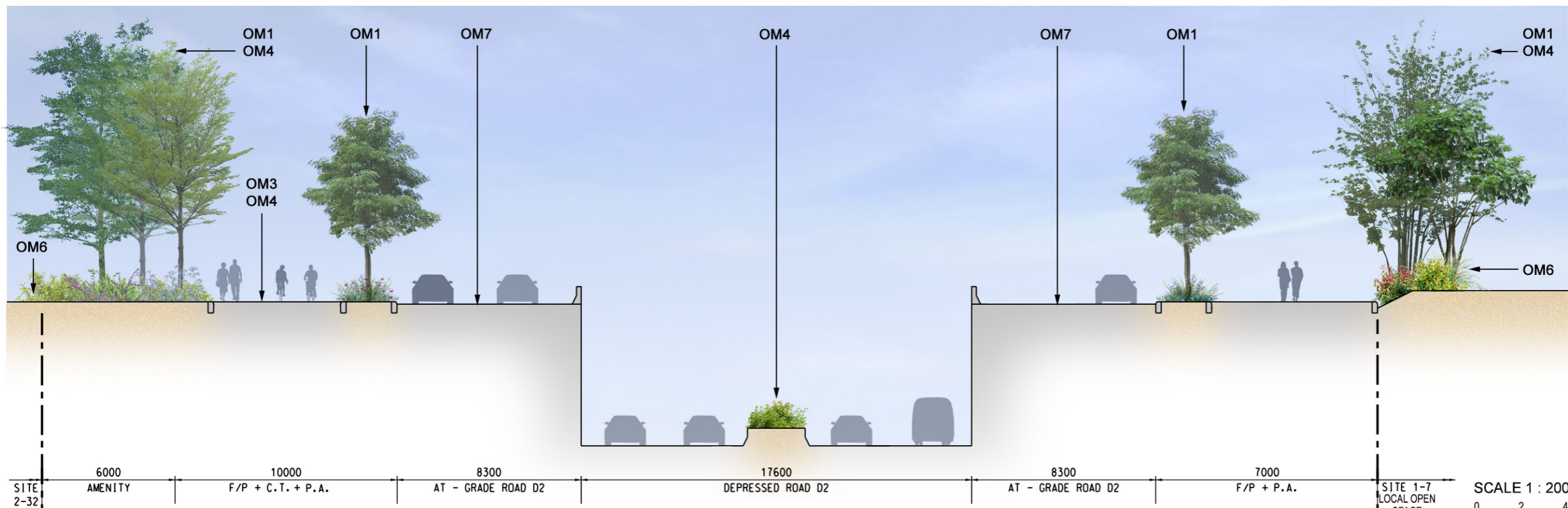


- Mitigation Measures**
- Construction Mitigation (CM)**
- CM1 – Minimised construction area and contractor's temporary works areas
  - CM2 – Stripping and storing of topsoil
  - CM3 – Protection of existing trees
  - CM4 – Transplantation of existing trees where practical
  - CM5 – Control of night-time lighting
  - CM6 – Construction of decorative hoarding around construction works
  - CM7 – Reduction of construction period to practical minimum
  - CM8 – Prevention of run-off
  - CM9 – Phasing of construction stage
  - CM10 – Advance screen planting
  - CM11 – Minimise disturbance footprints
  - CM12 – Protection of existing water courses
  - CM13 – Hydroseeding on modified slopes
  - CM14 – Integrate open space network with existing nullah conditions
- Operation Mitigation (OM)**
- OM1 – Compensatory tree planting where practical
  - OM3 – Sensitive design of hardscape elements along roadsides
  - OM4 – Reinstatement of streetscape elements
  - OM6 – Quality greening along roadside amenity strips
  - OM7 – Design of street lighting
  - OM10 – Sensitive design of vertical noise barriers and enclosures
  - OM14 – Greening of viaduct structures and noise barriers
- Note: All roadside greening to adhere to the requirements to DEVB TCW No. 2/2012

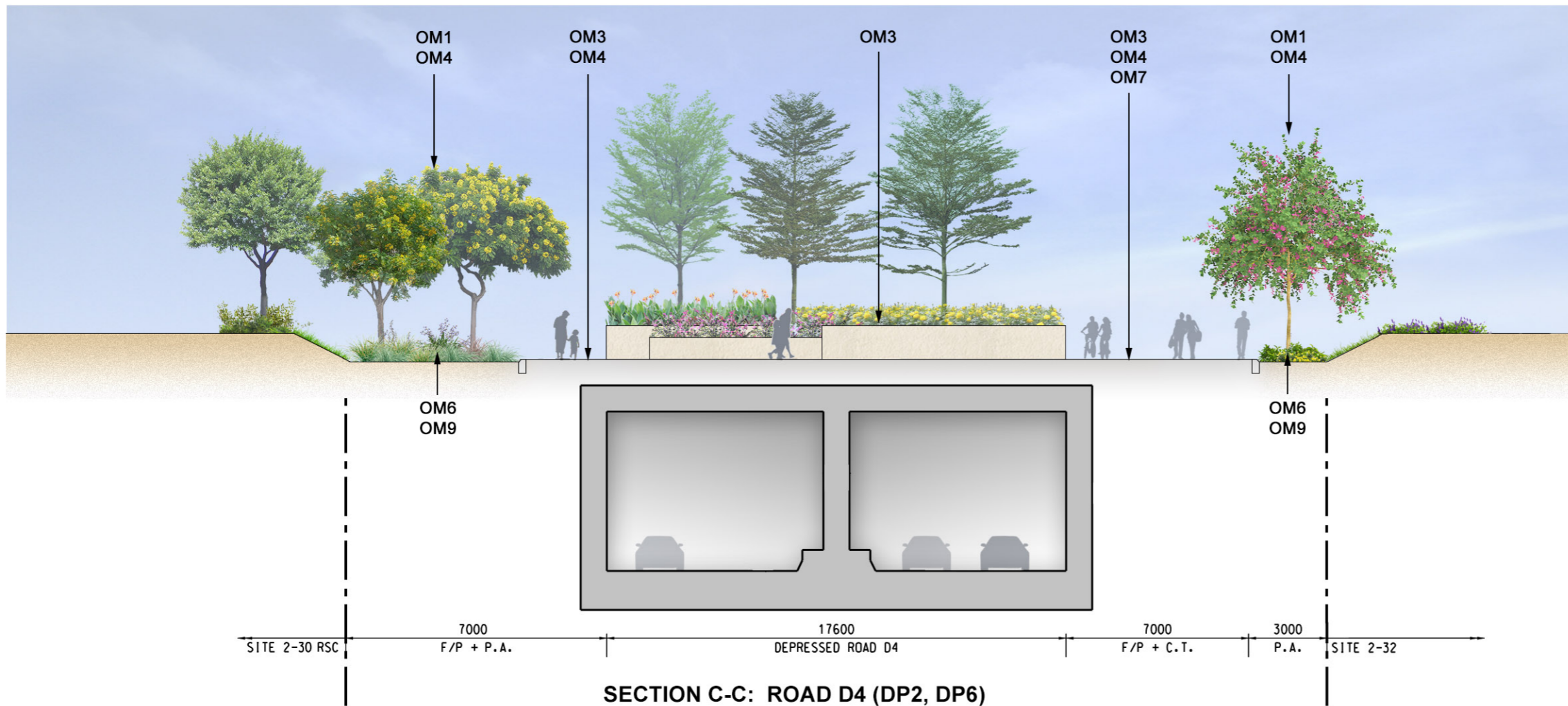


- Operation Mitigation (OM)**
- OM1 – Compensatory tree planting where practical
  - OM3 – Sensitive design of hardscape elements along roadsides
  - OM4 – Reinstatement of streetscape elements
  - OM6 – Quality greening along roadside amenity strips
  - OM7 – Design of street lighting
  - OM10 – Sensitive design of vertical noise barriers and enclosures
  - OM14 – Greening of viaduct structures and noise barriers
- Note: All roadside greening to adhere to the requirements to DEVB TCW No. 2/2012

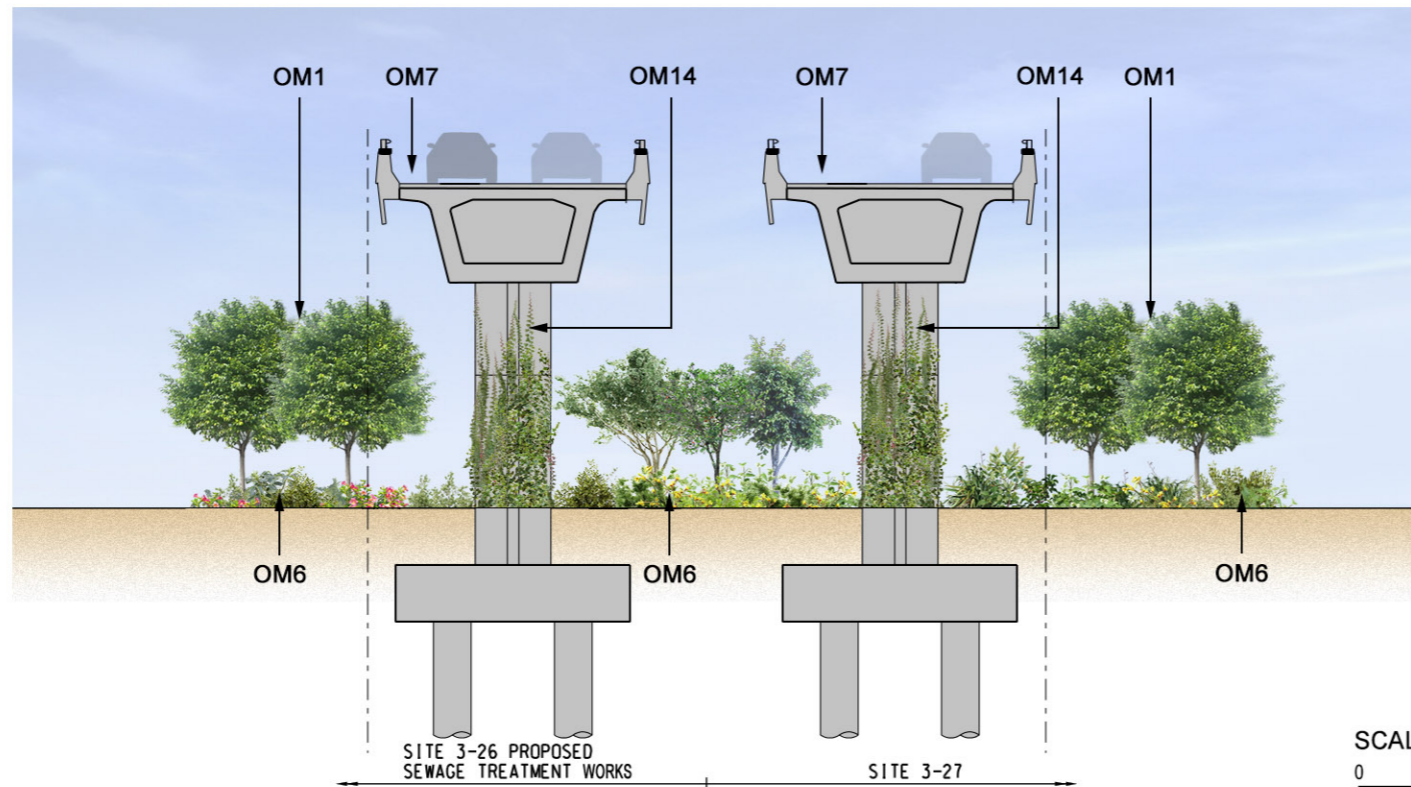


Agreement No. CE 2/2011 (CE)  
 Hung Shui Kiu New Development Area Planning and Engineering Study - Investigation  
**Mitigation Measures Road Sections A-A and B-B**

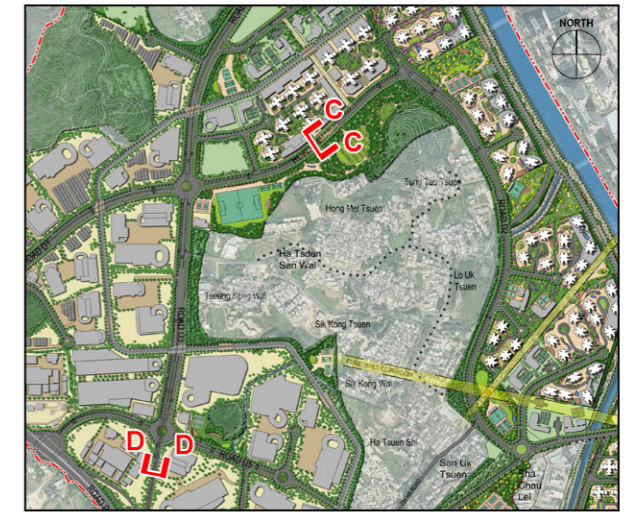
SCALE	1:200 @ A3	DATE	AUG 2016
CHECK	AM	DRAWN	PN
JOB No.	60222570	FIGURE	11.25a
		REV	



SECTION C-C: ROAD D4 (DP2, DP6)



SECTION D-D: FLYOVER BETWEEN KSWH AND ROAD D3 (DP5)



Key Plan

**Mitigation Measures**

**Construction Mitigation (CM)**

- CM1 – Minimised construction area and contractor's temporary works areas
- CM2 – Stripping and storing of topsoil
- CM3 – Protection of existing trees
- CM4 – Transplantation of existing trees where practical
- CM5 – Control of night-time lighting
- CM6 – Construction of decorative hoarding around construction works
- CM7 – Reduction of construction period to practical minimum
- CM8 – Prevention of run-off
- CM9 – Phasing of construction stage
- CM10 – Advance screen planting
- CM11 – Minimise disturbance footprints
- CM12 – Protection of existing water courses
- CM13 – Hydroseeding on modified slopes
- CM14 – Integrate open space network with existing nullah conditions

**Operation Mitigation (OM)**

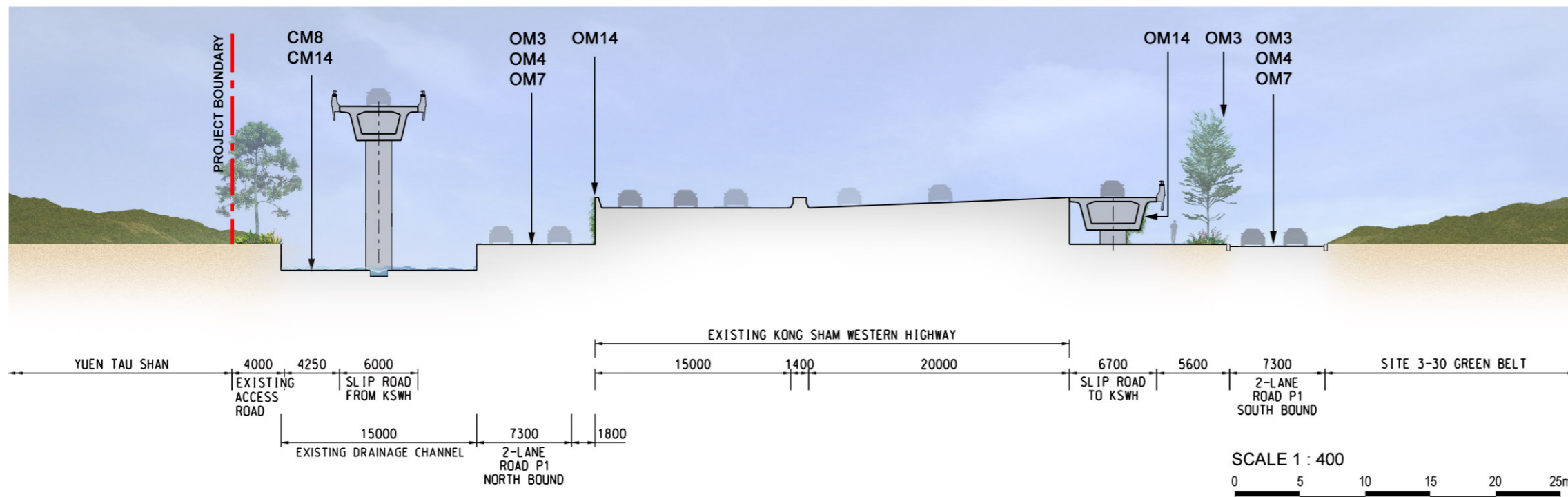
- OM1 – Compensatory tree planting where practical
- OM3 – Sensitive design of hardscape elements along roadsides
- OM4 – Reinstatement of streetscape elements
- OM6 – Quality greening along roadside amenity strips
- OM7 – Design of street lighting
- OM10 – Sensitive design of noise barriers and enclosures
- OM14 – Greening of viaduct structures and noise barriers

Note: All roadside greening to adhere to the requirements to DEVB TCW No. 2/2012

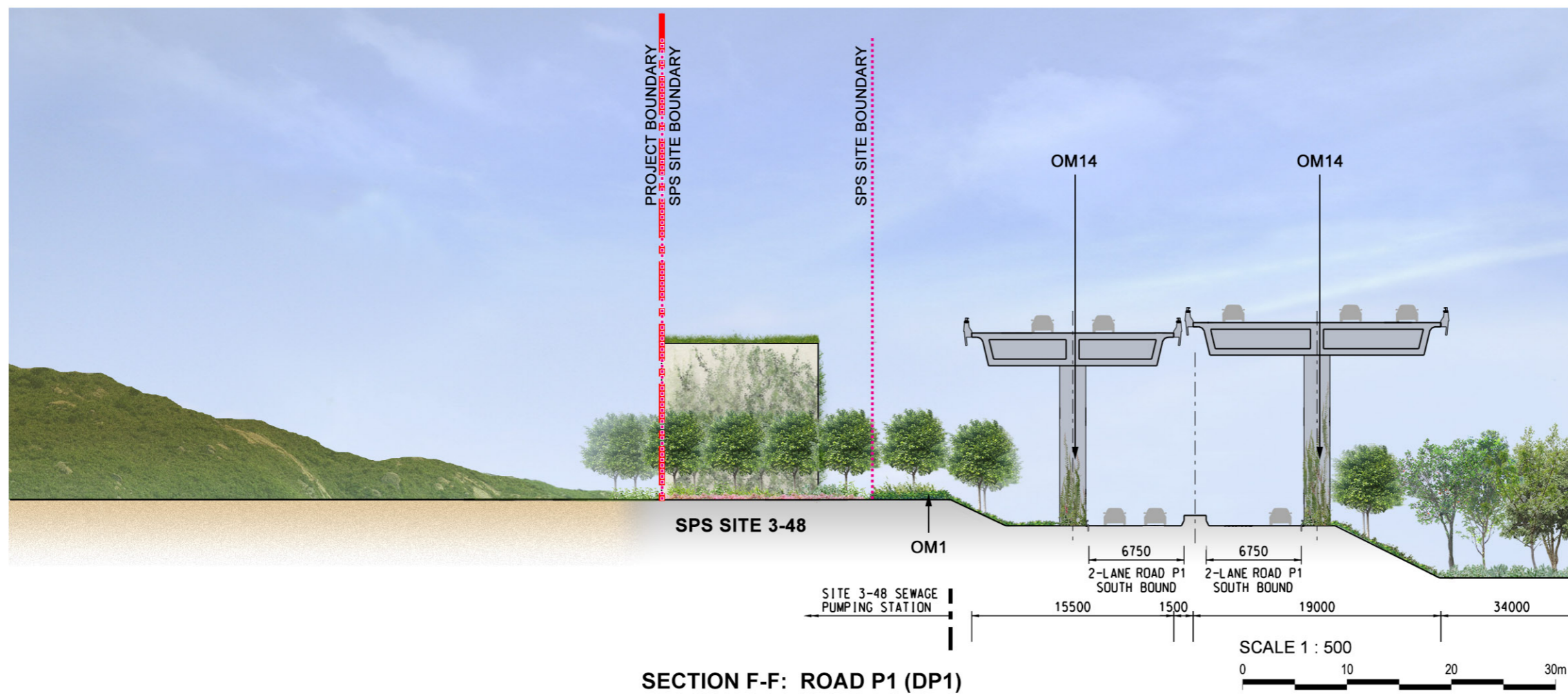
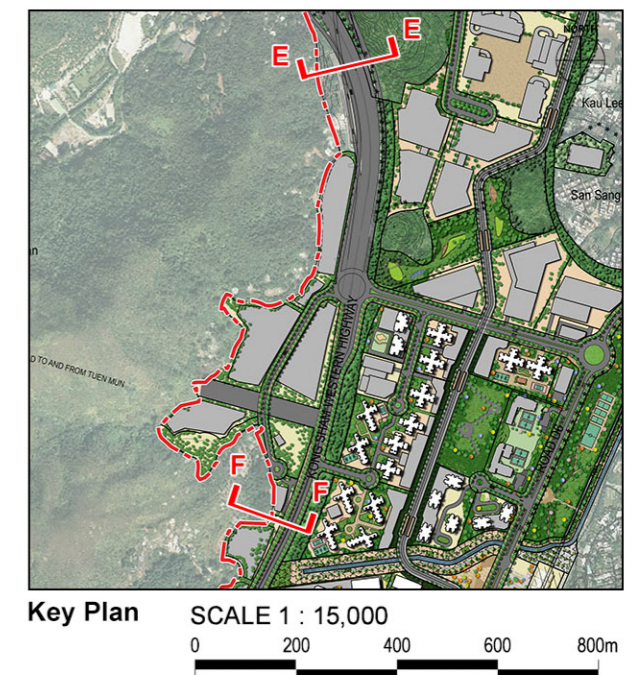


Agreement No. CE 2/2011 (CE)  
 Hung Shui Kiu New Development Area Planning and Engineering Study - Investigation  
**Mitigation Measures Road Sections C-C and D-D**

SCALE	1:200 @ A3	DATE	AUG 2016
CHECK	AM	DRAWN	PN
JOB No.	60222570	FIGURE	11.25b
		REV	



SECTION E-E: ROAD P1 AND FLYOVER BETWEEN KSWH AND ROAD D3 (DP1, DP5, DP12)



SECTION F-F: ROAD P1 (DP1)

**Mitigation Measures**

**Construction Mitigation (CM)**

- CM1 – Minimised construction area and contractor's temporary works areas
- CM2 – Stripping and storing of topsoil
- CM3 – Protection of existing trees
- CM4 – Transplantation of existing trees where practical
- CM5 – Control of night-time lighting
- CM6 – Construction of decorative hoarding around construction works
- CM7 – Reduction of construction period to practical minimum
- CM8 – Prevention of run-off
- CM9 – Phasing of construction stage
- CM10 – Advance screen planting
- CM11 – Minimise disturbance footprints
- CM12 – Protection of existing water courses
- CM13 – Hydroseeding on modified slopes
- CM14 – Integrate open space network with existing nullah conditions

**Operation Mitigation (OM)**

- OM1 – Compensatory tree planting where practical
- OM3 – Sensitive design of hardscape elements along roadsides
- OM4 – Reinstatement of streetscape elements
- OM6 – Quality greening along roadside amenity strips
- OM7 – Design of street lighting
- OM10 – Sensitive design of vertical noise barriers and enclosures
- OM14 – Greening of viaduct structures and noise barriers

Note: All roadside greening to adhere to the requirements to DEVB TCW No. 2/2012



Agreement No. CE 2/2011 (CE)  
 Hung Shui Kiu New Development Area Planning and Engineering Study - Investigation  
**Mitigation Measures Road Sections E-E and F-F**

SCALE	AS SHOWN	DATE	AUG 2016
CHECK	AM	DRAWN	PN
JOB No.	60222570	FIGURE	11.25c
		REV	