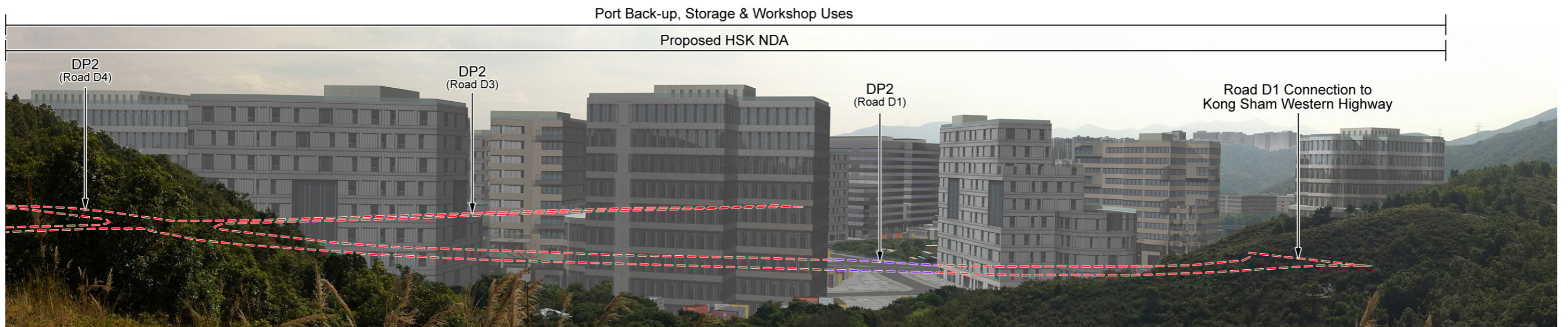




Existing Baseline Conditions



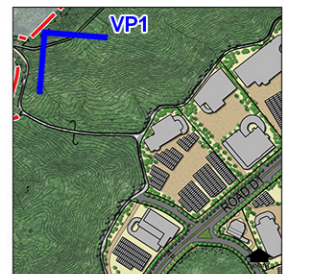
Proposed HSK Development without Mitigation at Day 1 (Operation Phase)

LEGEND (ROADS)

- - - - DP2 - CONSTRUCTION OF EIGHT NEW DISTRIBUTOR ROADS (ROAD D1 TO D8)
- - - - DP ROAD ALIGNMENTS WHERE VIEWS MAY POSSIBLY BE OBSTRUCTED BY STRUCTURES, TOPOGRAPHY OR LANDSCAPE ELEMENTS

Note:

The photomontages illustrating views at Day 1 represent the commencement of Operation Phase for the entire HSK development, with and without mitigation measures. The photomontages illustrating views at Year 10 of Operation Phase identify anticipated changes in mitigation measures from the Day 1 scenario. DP road alignments are indicated in coloured dashed lines to improve legibility where views are obstructed by other structures and landscape elements.



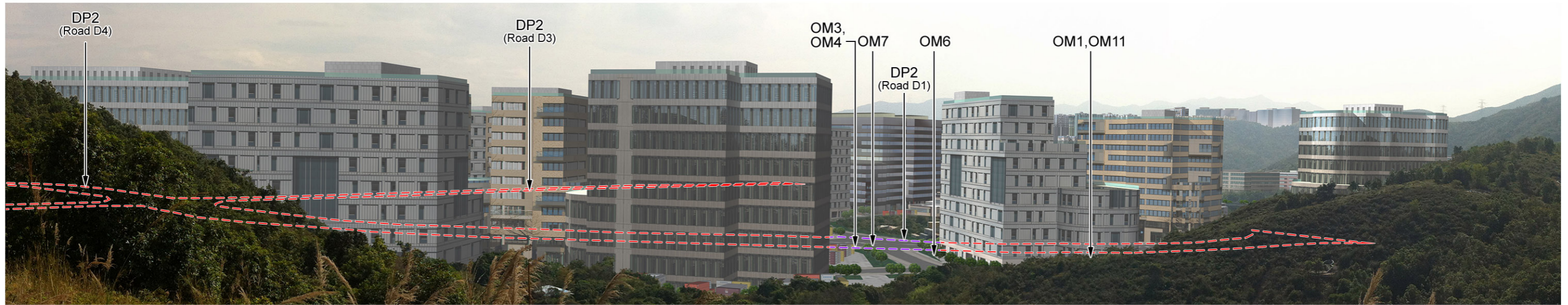
KEY PLAN



Agreement No. CE 2/2011 (CE)
 Hung Shui Kiu New Development Area Planning and Engineering Study - Investigation
Photomontage 01 - View from Ngau Hom Shek Hiking Trail

SCALE	N.T.S.	DATE	AUG 2016
CHECK	AM	DRAWN	LW
JOB No.	60222570	FIGURE	11.31a
		REV	

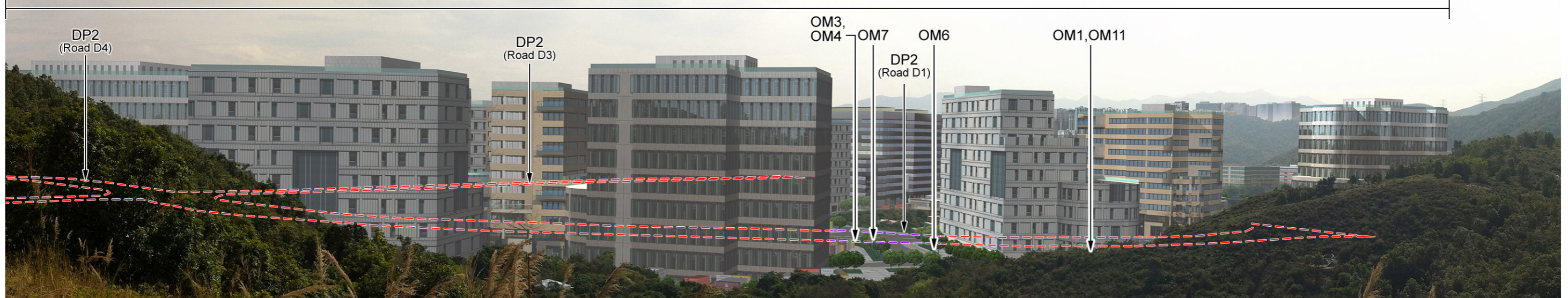
Proposed HSK NDA



Proposed HSK Development with Mitigation at Day 1 (Operation Phase)

Port Back-up, Storage & Workshop Uses

Proposed HSK NDA



Proposed HSK Development with Mitigation at Year 10 (Operation Phase)

LEGEND (ROADS)

- - - - DP2 - CONSTRUCTION OF EIGHT NEW DISTRIBUTOR ROADS (ROAD D1 TO D8)
- - - - DP ROAD ALIGNMENTS WHERE VIEWS MAY POSSIBLY BE OBSTRUCTED BY STRUCTURES, TOPOGRAPHY OR LANDSCAPE ELEMENTS

Mitigation Measures

Construction Mitigation (CM)

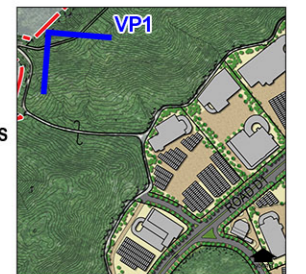
- CM1 - Minimised construction area and contractor's temporary works areas
- CM2 - Stripping and storing of topsoil
- CM3 - Protection of existing trees
- CM4 - Transplantation of existing trees where practical
- CM5 - Control of night-time lighting
- CM6 - Construction of decorative hoarding around construction works

- CM7 - Reduction of construction period to practical minimum
- CM8 - Prevention of run-off
- CM9 - Phasing of construction stage
- CM10 - Advance screen planting
- CM11 - Minimise disturbance footprints
- CM12 - Protection of existing water courses
- CM13 - Hydroseeding on modified slopes
- CM14 - Integrate open space network with existing nullah conditions

Operation Mitigation (OM)

- OM1 - Compensatory tree planting where practical
- OM3 - Sensitive design of hardscape elements along roadsides
- OM4 - Reinstatement of streetscape elements
- OM6 - Quality greening along roadside amenity strips
- OM7 - Design of street lighting

- OM10 - Sensitive design of vertical noise barriers and enclosures
 - OM14 - Greening of viaduct structures and noise barriers
- Note: CM1 - CM14, and other mitigation measures not shown in these figures, are considered best practices throughout the entire NDA and should be implemented to the fullest extent possible.



KEY PLAN



Agreement No. CE 2/2011 (CE)
 Hung Shui Kiu New Development Area Planning and Engineering Study - Investigation
Photomontage 01 - View from Ngau Hom Shek Hiking Trail

SCALE	N.T.S.	DATE	AUG 2016
CHECK	AM	DRAWN	LW
JOB No.	60222570	FIGURE	FIGURE 11.31b
		REV	