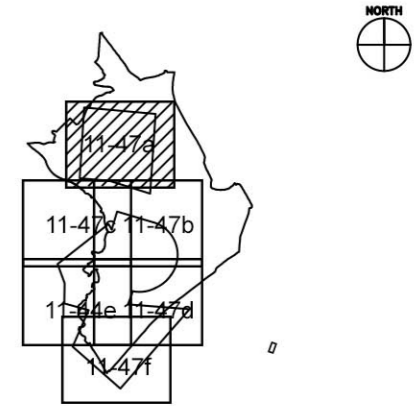


Note: Buildings, roads and pavement are not considered Landscape Resources and have not been included in the mapping of resources. Figures attempt to formalize boundaries between distinct areas of Landscape Resources for the purpose of impact assessment, and should not be construed as reflecting every single variable on the ground.



KEYPLAN

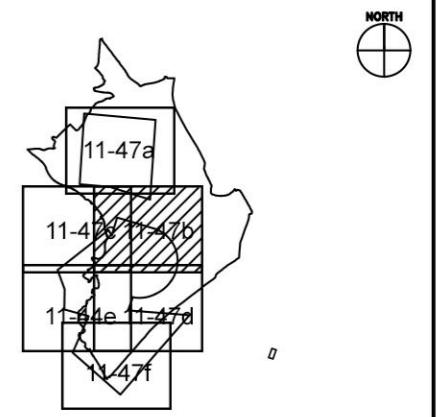
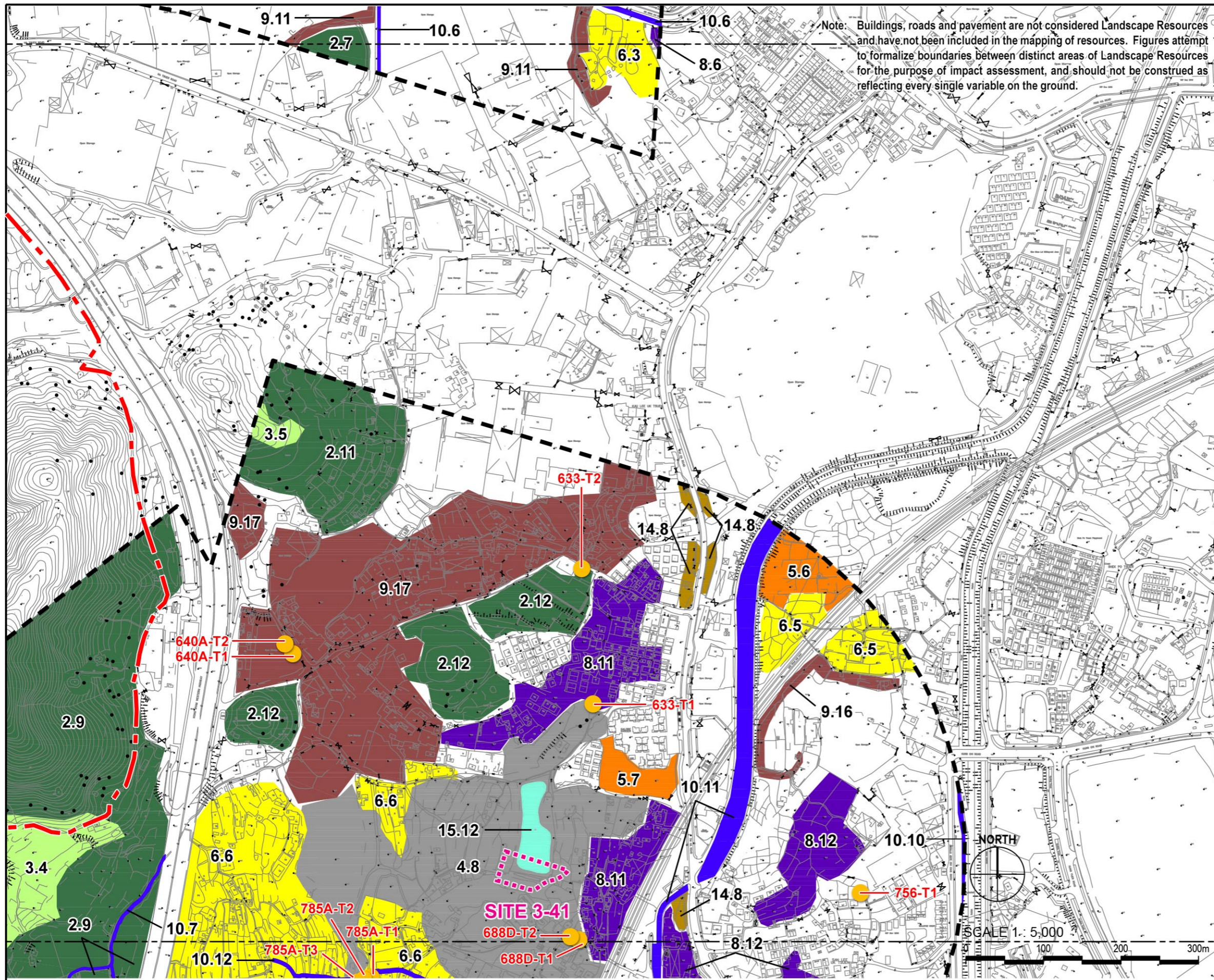
- LEGEND**
- 500m Assessment Area Boundary
  - - - - - Project Boundary
  - ..... Proposed Schedule 2 DP9 Works Area
  - LR2 HILLSIDE WOODLAND = 469343 SQM
  - LR3 HILLSIDE SHRUB & GRASSLAND = 254749 SQM
  - LR4 LOW-LYING WOODLAND/PLANTATION = 157381 SQ.M
  - LR5 LOW-LYING SHRUB & GRASSLAND = 235893 SQ.M
  - LR6 VEGETATION ON AGRICULTURAL LAND = 280474 SQM
  - LR7 VEGETATION WITHIN RESIDENTIAL DEVELOPMENTS = 2620 SQM
  - LR8 VEGETATION WITHIN RURAL VILLAGE = 413708 SQM
  - LR9 VEGETATION WITHIN INDUSTRIAL LAND & OPEN STORAGE = 288801 SQM
  - LR10 WATERCOURSE = 45157 SQ.M
  - LR11 VEGETATION WITHIN URBAN PARKS = 8566 SQM
  - LR12 VEGETATION ON MODIFIED SLOPES = 12245 SQM
  - LR14 ROADSIDE VEGETATION = 24942 SQM
  - LR15 WATERBODIES = 9808 SQ.M
  - LR17 MARSH = 6209 SQM
  - LR18 IMPORTANT TREE = 37 NOS.



Agreement No. CE 2/2011 (CE)  
 Hung Shui Kiu New Development Area Planning and Engineering Study - Investigation  
**Landscape Resources Enlargement Plan 01**

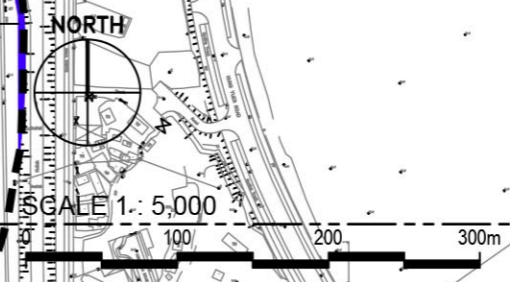
SCALE	1:5,000@A3	DATE	AUG 2016
CHECK	AM	DRAWN	LW
JOB No.	60222570	FIGURE	11.47a
		REV	





KEYPLAN

- LEGEND**
- 500m Assessment Area Boundary
  - Project Boundary
  - Proposed Schedule 2 DP9 Works Area
  - LR2 HILLSIDE WOODLAND = 469343 SQM
  - LR3 HILLSIDE SHRUB & GRASSLAND = 254749 SQM
  - LR4 LOW-LYING WOODLAND/PLANTATION = 157381 SQ.M
  - LR5 LOW-LYING SHRUB & GRASSLAND = 235893 SQ.M
  - LR6 VEGETATION ON AGRICULTURAL LAND = 280474 SQM
  - LR7 VEGETATION WITHIN RESIDENTIAL DEVELOPMENTS = 2620 SQM
  - LR8 VEGETATION WITHIN RURAL VILLAGE = 413708 SQM
  - LR9 VEGETATION WITHIN INDUSTRIAL LAND & OPEN STORAGE = 288801 SQM
  - LR10 WATERCOURSE = 45157 SQ.M
  - LR11 VEGETATION WITHIN URBAN PARKS = 8566 SQM
  - LR12 VEGETATION ON MODIFIED SLOPES = 12245 SQM
  - LR14 ROADSIDE VEGETATION = 24942 SQM
  - LR15 WATERBODIES = 9808 SQ.M
  - LR17 MARSH = 6209 SQM
  - LR18 IMPORTANT TREE = 37 NOS.

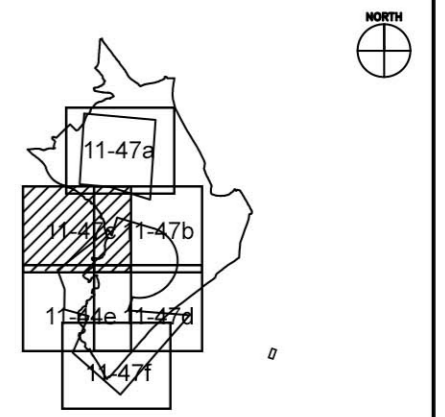
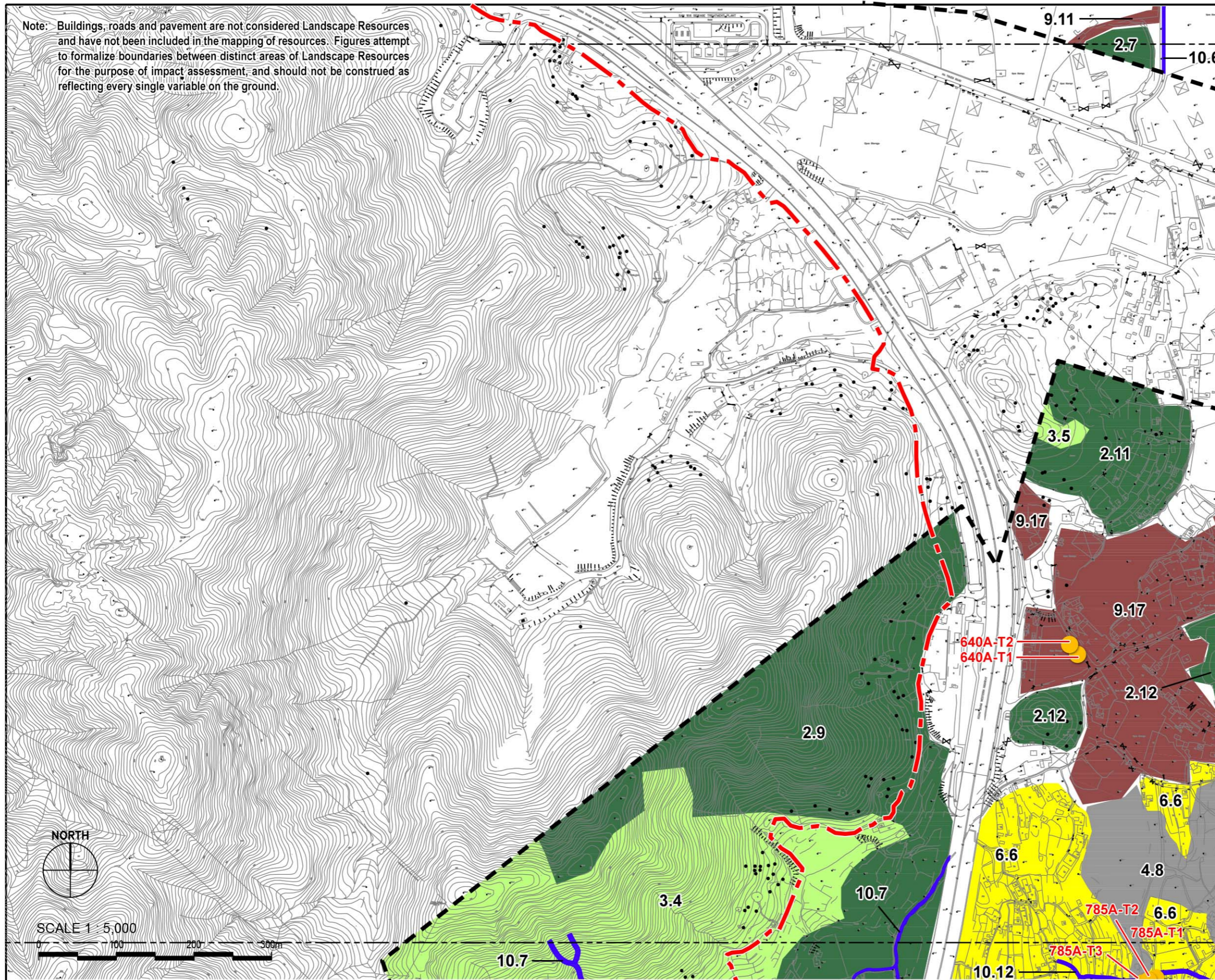


Agreement No. CE 2/2011 (CE)  
 Hung Shui Kiu New Development Area Planning and Engineering Study - Investigation  
**Landscape Resources Enlargement Plan 02**

SCALE	1:30,000@A3	DATE	AUG 2016
CHECK	AM	DRAWN	LW
JOB No.	60222570	FIGURE	11.47b
		REV	

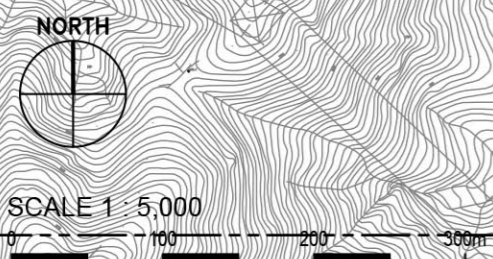


Note: Buildings, roads and pavement are not considered Landscape Resources and have not been included in the mapping of resources. Figures attempt to formalize boundaries between distinct areas of Landscape Resources for the purpose of impact assessment, and should not be construed as reflecting every single variable on the ground.



KEYPLAN

- LEGEND**
- 500m Assessment Area Boundary
  - - - Project Boundary
  - ..... Proposed Schedule 2 DP9 Works Area
  - LR2 HILLSIDE WOODLAND = 469343 SQM
  - LR3 HILLSIDE SHRUB & GRASSLAND = 254749 SQM
  - LR4 LOW-LYING WOODLAND/PLANTATION = 157381 SQ.M
  - LR5 LOW-LYING SHRUB & GRASSLAND = 235893 SQ.M
  - LR6 VEGETATION ON AGRICULTURAL LAND = 280474 SQM
  - LR7 VEGETATION WITHIN RESIDENTIAL DEVELOPMENTS = 2620 SQM
  - LR8 VEGETATION WITHIN RURAL VILLAGE = 413708 SQM
  - LR9 VEGETATION WITHIN INDUSTRIAL LAND & OPEN STORAGE = 288801 SQM
  - LR10 WATERCOURSE = 45157 SQ.M
  - LR11 VEGETATION WITHIN URBAN PARKS = 8566 SQM
  - LR12 VEGETATION ON MODIFIED SLOPES = 12245 SQM
  - LR14 ROADSIDE VEGETATION = 24942 SQM
  - LR15 WATERBODIES = 9808 SQ.M
  - LR17 MARSH = 6209 SQM
  - LR18 IMPORTANT TREE = 37 NOS.



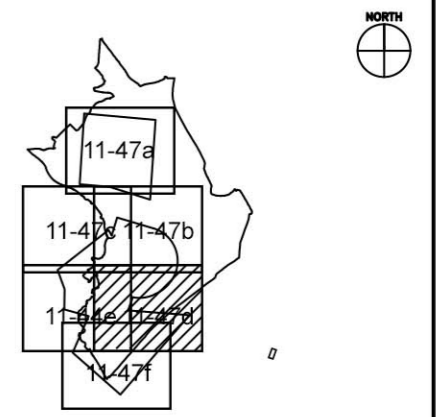
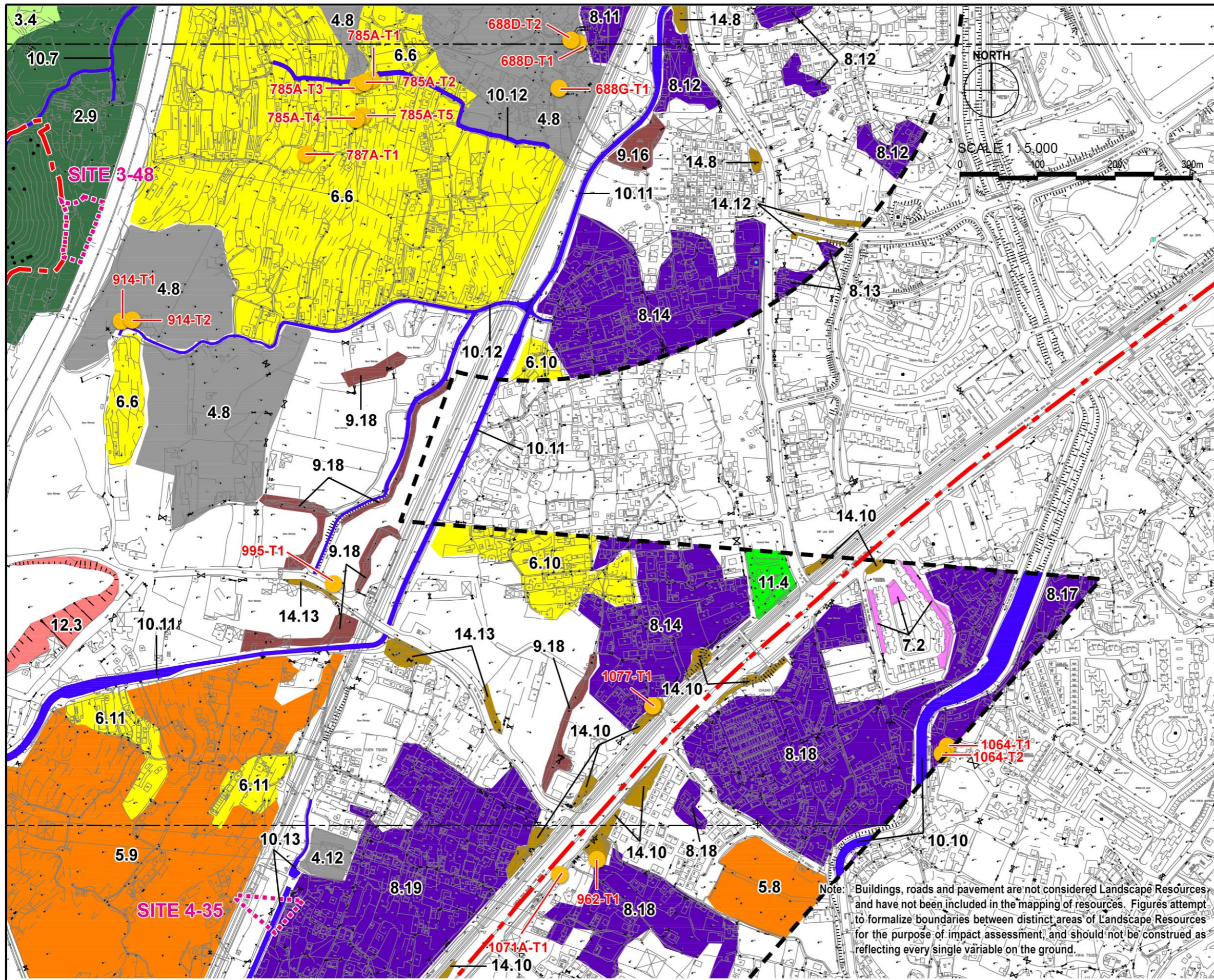
SCALE 1:5,000



Agreement No. CE 2/2011 (CE)  
 Hung Shui Kiu New Development Area Planning and Engineering Study - Investigation  
**Landscape Resources Enlargement Plan 03**

SCALE	1:5,000@A3	DATE	AUG 2016
CHECK	AM	DRAWN	LW
JOB No.	60222570	FIGURE	11.47c
		REV	



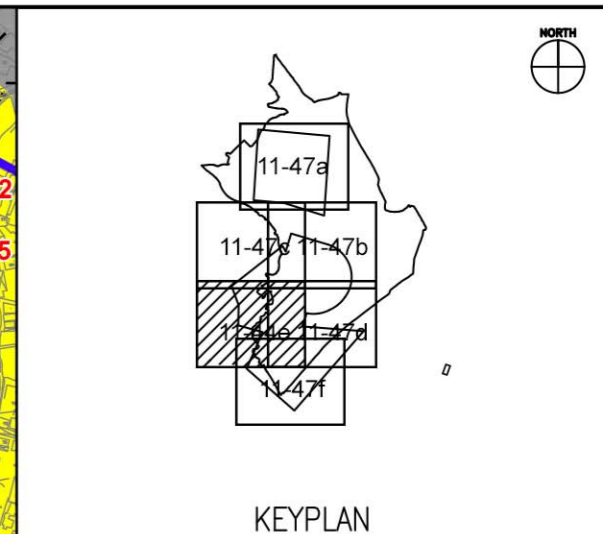
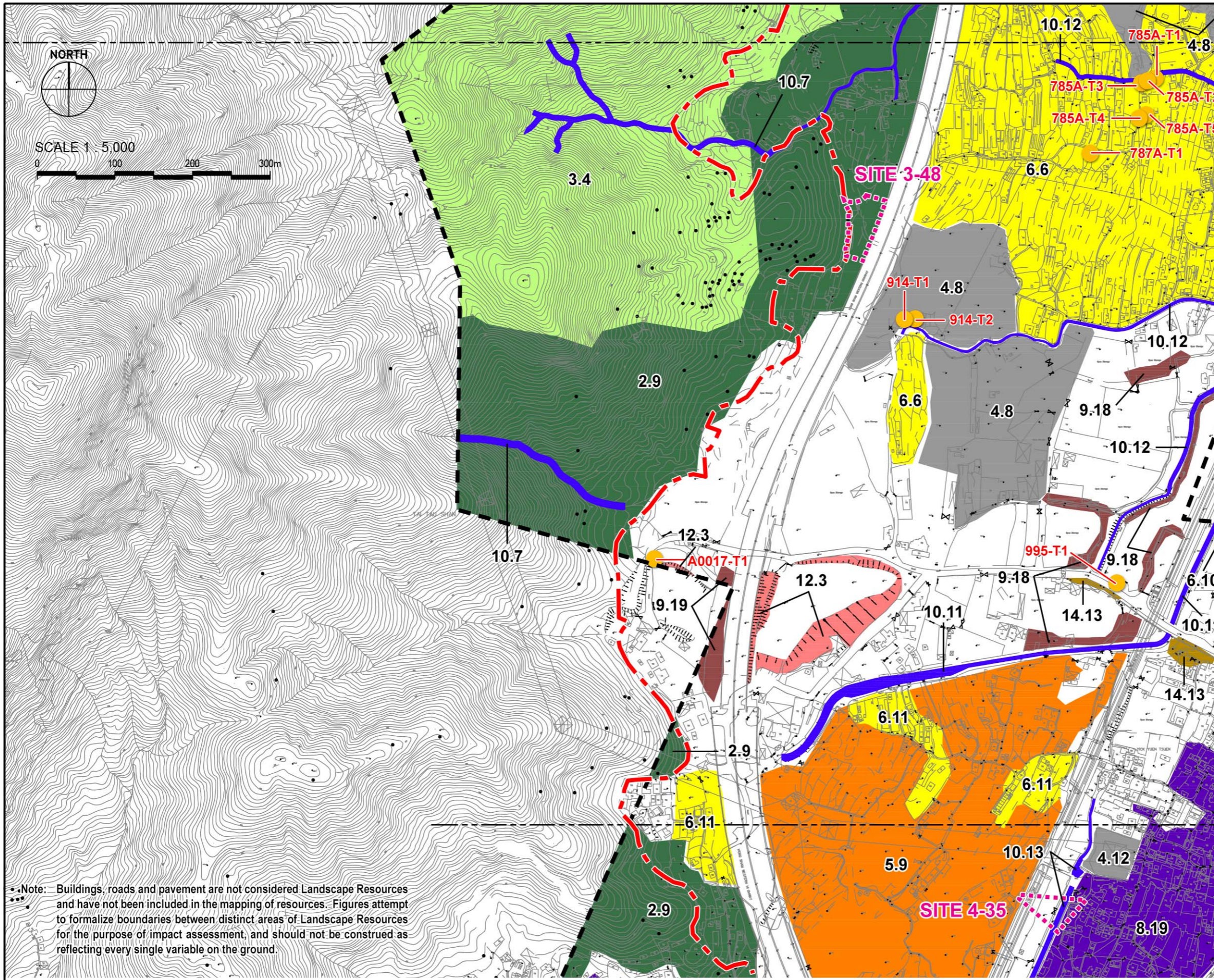


- LEGEND**
- 500m Assessment Area Boundary
  - - - Project Boundary
  - ..... Proposed Schedule 2 DP9 Works Area
  - LR2 HILLSIDE WOODLAND = 469343 SQM
  - LR3 HILLSIDE SHRUB & GRASSLAND = 254749 SQM
  - LR4 LOW-LYING WOODLAND/PLANTATION = 157381 SQ.M
  - LR5 LOW-LYING SHRUB & GRASSLAND = 235893 SQ.M
  - LR6 VEGETATION ON AGRICULTURAL LAND = 280474 SQM
  - LR7 VEGETATION WITHIN RESIDENTIAL DEVELOPMENTS = 2620 SQM
  - LR8 VEGETATION WITHIN RURAL VILLAGE = 413708 SQM
  - LR9 VEGETATION WITHIN INDUSTRIAL LAND & OPEN STORAGE = 288801 SQM
  - LR10 WATERCOURSE = 45157 SQ.M
  - LR11 VEGETATION WITHIN URBAN PARKS = 8566 SQM
  - LR12 VEGETATION ON MODIFIED SLOPES = 12245 SQM
  - LR14 ROADSIDE VEGETATION = 24942 SQM
  - LR15 WATERBODIES = 9808 SQ.M
  - LR17 MARSH = 6209 SQM
  - LR18 IMPORTANT TREE = 37 NOS.

Note: Buildings, roads and pavement are not considered Landscape Resources and have not been included in the mapping of resources. Figures attempt to formalize boundaries between distinct areas of Landscape Resources for the purpose of impact assessment, and should not be construed as reflecting every single variable on the ground.

SCALE	1:5,000@A3	DATE	AUG 2016
CHECK	AM	DRAWN	LW
JOB No.	60222570	FIGURE	11.47d
		REV	





**LEGEND**

- 500m Assessment Area Boundary
- Project Boundary
- Proposed Schedule 2 DP9 Works Area
- LR2 HILLSIDE WOODLAND = 469343 SQM
- LR3 HILLSIDE SHRUB & GRASSLAND = 254749 SQM
- LR4 LOW-LYING WOODLAND/PLANTATION = 157381 SQ.M
- LR5 LOW-LYING SHRUB & GRASSLAND = 235893 SQ.M
- LR6 VEGETATION ON AGRICULTURAL LAND = 280474 SQM
- LR7 VEGETATION WITHIN RESIDENTIAL DEVELOPMENTS = 2620 SQM
- LR8 VEGETATION WITHIN RURAL VILLAGE = 413708 SQM
- LR9 VEGETATION WITHIN INDUSTRIAL LAND & OPEN STORAGE = 288801 SQM
- LR10 WATERCOURSE = 45157 SQ.M
- LR11 VEGETATION WITHIN URBAN PARKS = 8566 SQM
- LR12 VEGETATION ON MODIFIED SLOPES = 12245 SQM
- LR14 ROADSIDE VEGETATION = 24942 SQM
- LR15 WATERBODIES = 9808 SQ.M
- LR17 MARSH = 6209 SQM
- LR18 IMPORTANT TREE = 37 NOS.

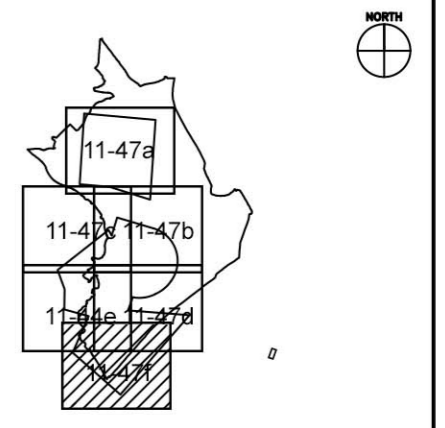
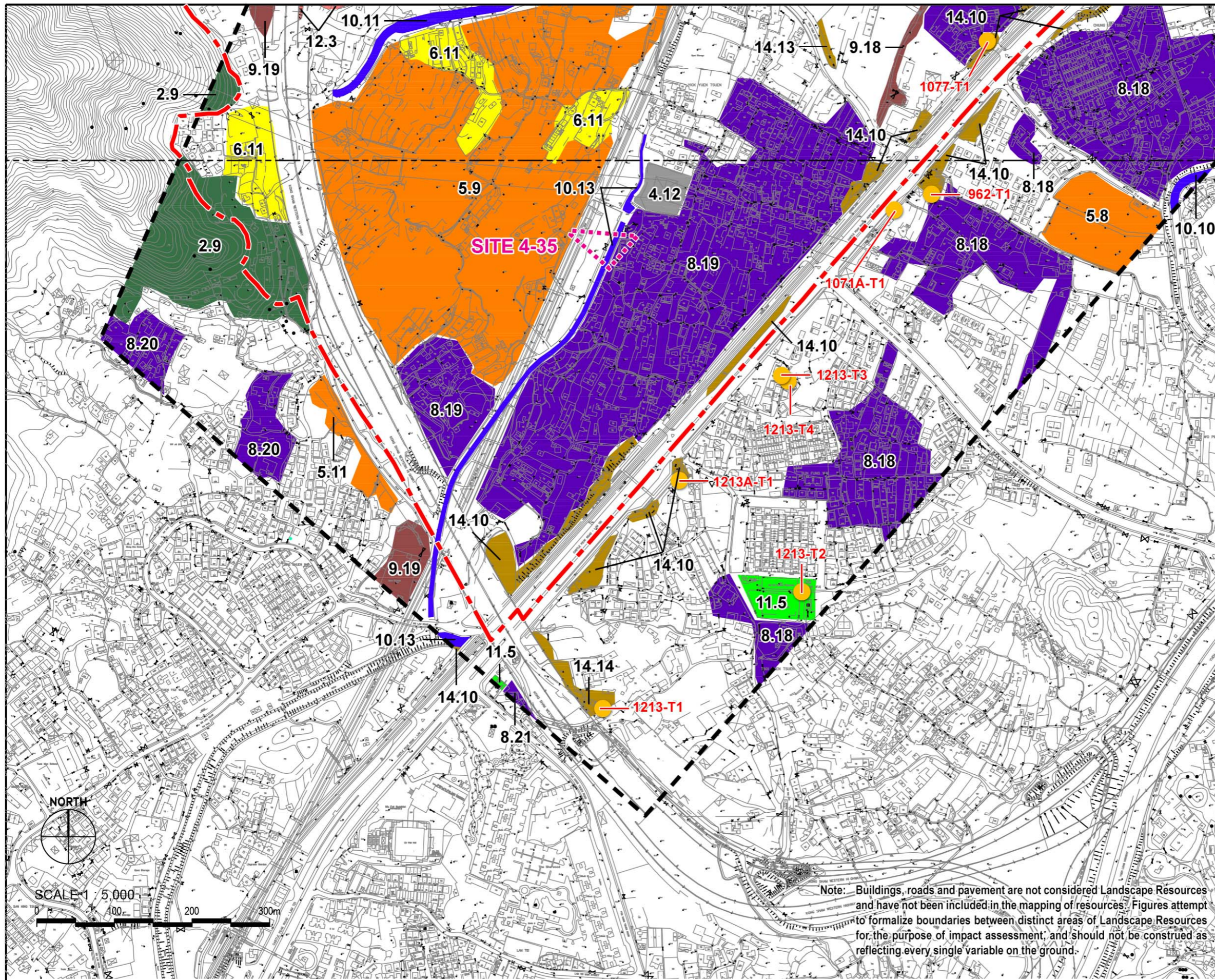
Note: Buildings, roads and pavement are not considered Landscape Resources and have not been included in the mapping of resources. Figures attempt to formalize boundaries between distinct areas of Landscape Resources for the purpose of impact assessment, and should not be construed as reflecting every single variable on the ground.



Agreement No. CE 2/2011 (CE)  
 Hung Shui Kiu New Development Area Planning and Engineering Study - Investigation  
**Landscape Resources Enlargement Plan 05**

SCALE	1:5,000@A3	DATE	AUG 2016
CHECK	AM	DRAWN	LW
JOB No.	60222570	FIGURE	11.47e
		REV	



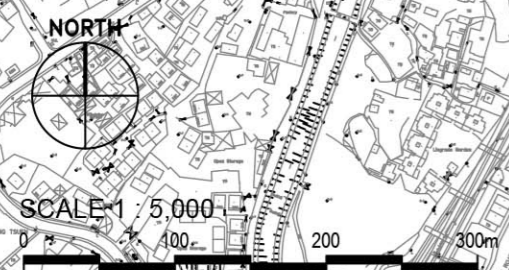


**LEGEND**

- 500m Assessment Area Boundary
- Project Boundary
- Proposed Schedule 2 DP9 Works Area

<span style="display: inline-block; width: 15px; height: 15px; background-color: #4CAF50; border: 1px solid black;"></span>	LR2 HILLSIDE WOODLAND = 469343 SQM
<span style="display: inline-block; width: 15px; height: 15px; background-color: #90EE90; border: 1px solid black;"></span>	LR3 HILLSIDE SHRUB & GRASSLAND = 254749 SQM
<span style="display: inline-block; width: 15px; height: 15px; background-color: #A9A9A9; border: 1px solid black;"></span>	LR4 LOW-LYING WOODLAND/PLANTATION = 157381 SQ.M
<span style="display: inline-block; width: 15px; height: 15px; background-color: #FF8C00; border: 1px solid black;"></span>	LR5 LOW-LYING SHRUB & GRASSLAND = 235893 SQ.M
<span style="display: inline-block; width: 15px; height: 15px; background-color: #FFFF00; border: 1px solid black;"></span>	LR6 VEGETATION ON AGRICULTURAL LAND = 280474 SQM
<span style="display: inline-block; width: 15px; height: 15px; background-color: #FF69B4; border: 1px solid black;"></span>	LR7 VEGETATION WITHIN RESIDENTIAL DEVELOPMENTS = 2620 SQM
<span style="display: inline-block; width: 15px; height: 15px; background-color: #800080; border: 1px solid black;"></span>	LR8 VEGETATION WITHIN RURAL VILLAGE = 413708 SQM
<span style="display: inline-block; width: 15px; height: 15px; background-color: #8B4513; border: 1px solid black;"></span>	LR9 VEGETATION WITHIN INDUSTRIAL LAND & OPEN STORAGE = 288801 SQM
<span style="display: inline-block; width: 15px; height: 15px; background-color: #4169E1; border: 1px solid black;"></span>	LR10 WATERCOURSE = 45157 SQ.M
<span style="display: inline-block; width: 15px; height: 15px; background-color: #00FF00; border: 1px solid black;"></span>	LR11 VEGETATION WITHIN URBAN PARKS = 8566 SQM
<span style="display: inline-block; width: 15px; height: 15px; background-color: #FF6347; border: 1px solid black;"></span>	LR12 VEGETATION ON MODIFIED SLOPES = 12245 SQM
<span style="display: inline-block; width: 15px; height: 15px; background-color: #8B4513; border: 1px solid black;"></span>	LR14 ROADSIDE VEGETATION = 24942 SQM
<span style="display: inline-block; width: 15px; height: 15px; background-color: #7FFFD4; border: 1px solid black;"></span>	LR15 WATERBODIES = 9808 SQ.M
<span style="display: inline-block; width: 15px; height: 15px; background-color: #00FF00; border: 1px solid black;"></span>	LR17 MARSH = 6209 SQM
<span style="display: inline-block; width: 10px; height: 10px; background-color: #FFD700; border: 1px solid black; border-radius: 50%;"></span>	LR18 IMPORTANT TREE = 37 NOS.

Note: Buildings, roads and pavement are not considered Landscape Resources and have not been included in the mapping of resources. Figures attempt to formalize boundaries between distinct areas of Landscape Resources for the purpose of impact assessment, and should not be construed as reflecting every single variable on the ground.



Agreement No. CE 2/2011 (CE)  
 Hung Shui Kiu New Development Area Planning and Engineering Study - Investigation  
**Landscape Resources Enlargement Plan 06**

SCALE	1:5,000@A3	DATE	JUL 2016
CHECK	AM	DRAWN	LW
JOB No.	60222570	FIGURE	11.47f
		REV	