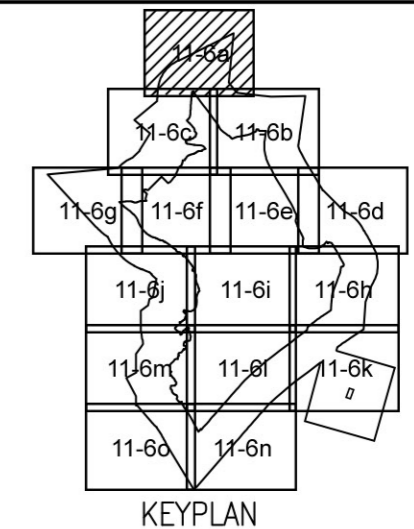
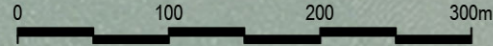




SCALE 1 : 5,000



LEGEND

- 500m Assessment Area Boundary
- Project Boundary
- 5.5+4.2m at 45° Cantilever
- 6+4.2m at 45° Cantilever
- 3m Vertical Noise Barrier
- 4m Vertical Noise Barrier
- 5m Vertical Noise Barrier
- 6m Vertical Noise Barrier
- 7m Vertical Noise Barrier

Mitigation Measures

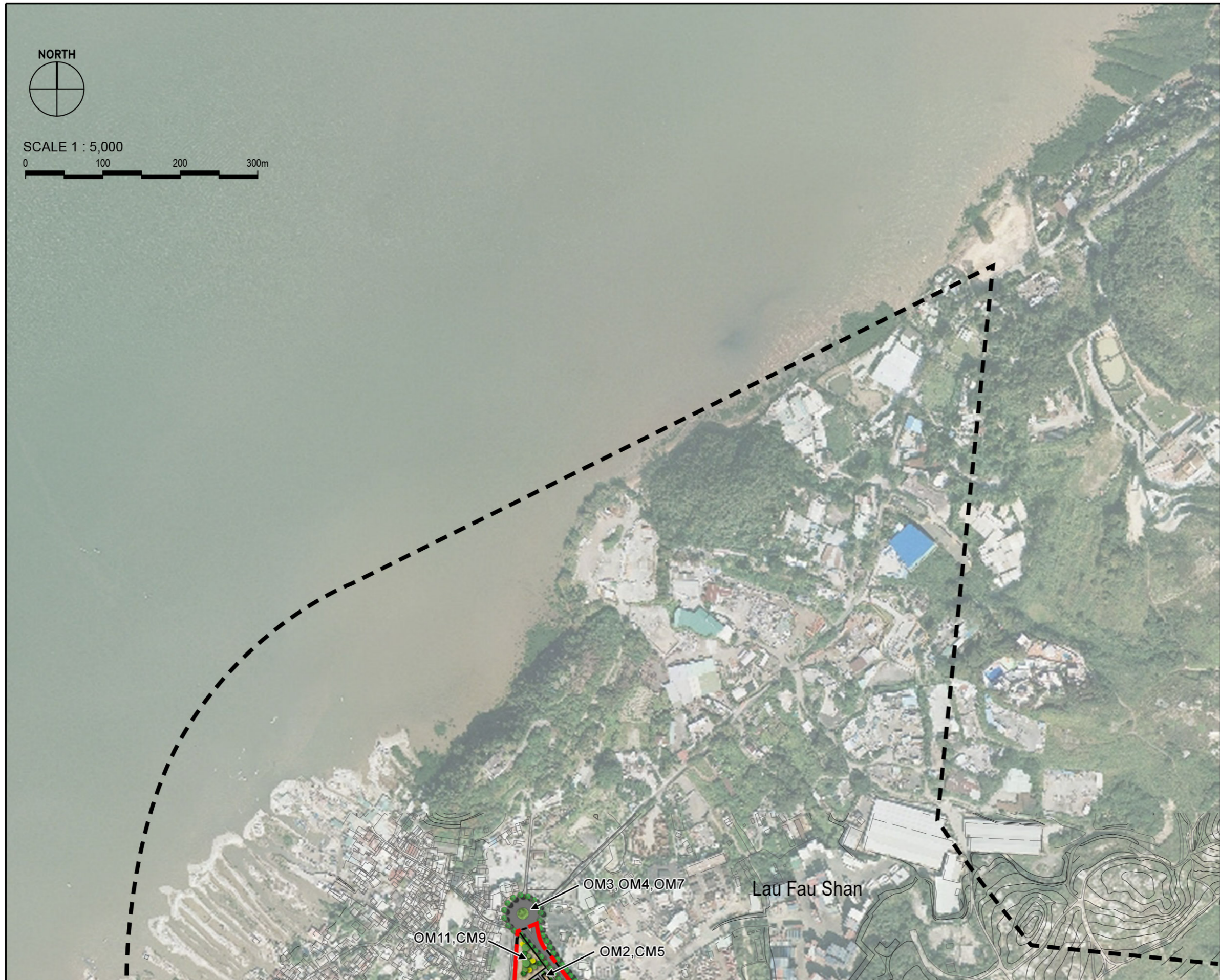
Construction Mitigation (CM)

- CM1 – Minimised construction area and contractor's temporary works areas
- CM2 – Stripping and storing of topsoil
- CM3 – Protection of existing trees
- CM4 – Transplantation of existing trees where practical
- CM5 – Control of night-time lighting
- CM6 – Construction of decorative hoarding around construction works
- CM7 – Reduction of construction period to practical minimum
- CM8 – Prevention of run-off
- CM9 – Phasing of construction stage
- CM10 – Advance screen planting
- CM11 – Minimise disturbance footprints
- CM12 – Protection of existing water courses
- CM13 – Hydroseeding on modified slopes
- CM14 – Integrate open space network with existing nullah conditions

Operation Mitigation (OM)

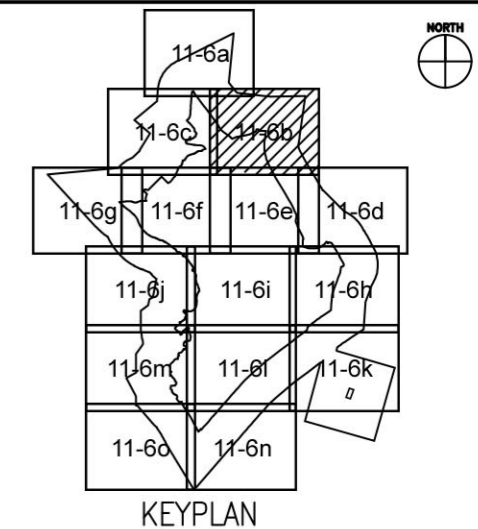
- OM1 – Compensatory tree planting where practical
- OM2 – Sensitive design of above-ground structures
- OM3 – Sensitive design of hardscape elements along roadsides
- OM4 – Reinstatement of streetscape elements
- OM5 – Visual softening via soft landscape elements
- OM6 – Quality greening along roadside amenity strips
- OM7 – Design of street lighting
- OM8 – Sensitive and chromatic treatment of architectural facades
- OM9 – Sensitive design of landscape areas
- OM10 – Sensitive design of vertical noise barriers and enclosures
- OM11 – Tree planting to site boundaries
- OM12 – Night time lighting
- OM13 – Green roofs and vertical greening
- OM14 – Greening of viaduct structures and noise barriers

Note: CM1 - CM14, and other mitigation measures not shown in these figures, are considered best practices throughout the entire NDA and should be implemented to the fullest extent possible.



Agreement No. CE 2/2011 (CE)
 Hung Shui Kiu New Development Area Planning and Engineering Study - Investigation
Mitigation Measures Enlargement Plan 01

SCALE	1:5,000@A3	DATE	AUG 2016
CHECK	AM	DRAWN	PN
JOB No.	60222570	FIGURE	11.6a
		REV	



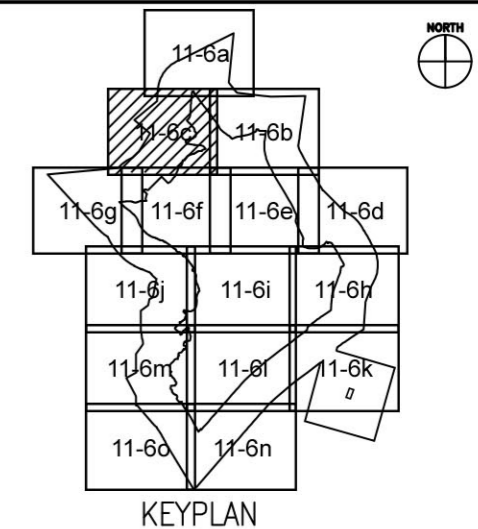
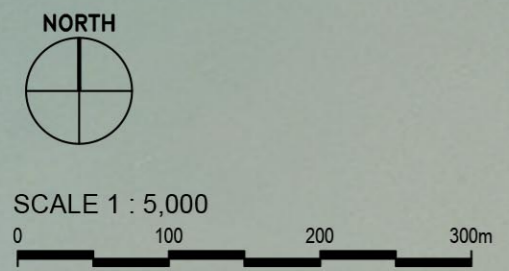
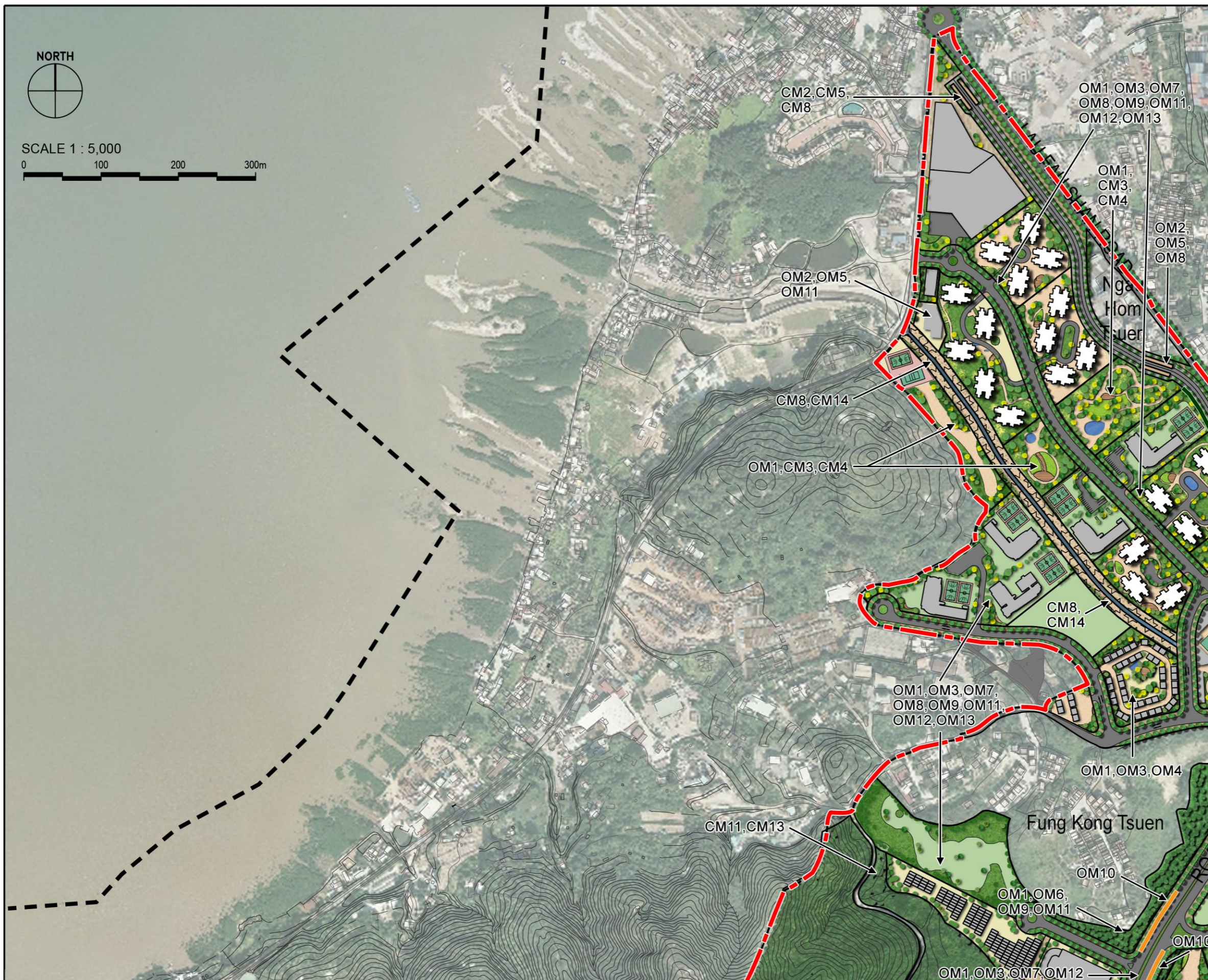
- LEGEND**
- 500m Assessment Area Boundary
 - - - Project Boundary
 - 5.5+4.2m at 45° Cantilever
 - 6+4.2m at 45° Cantilever
 - 3m Vertical Noise Barrier
 - 4m Vertical Noise Barrier
 - 5m Vertical Noise Barrier
 - 6m Vertical Noise Barrier
 - 7m Vertical Noise Barrier

- Mitigation Measures**
- Construction Mitigation (CM)**
- CM1 – Minimised construction area and contractor's temporary works areas
 - CM2 – Stripping and storing of topsoil
 - CM3 – Protection of existing trees
 - CM4 – Transplantation of existing trees where practical
 - CM5 – Control of night-time lighting
 - CM6 – Construction of decorative hoarding around construction works
 - CM7 – Reduction of construction period to practical minimum
 - CM8 – Prevention of run-off
 - CM9 – Phasing of construction stage
 - CM10 – Advance screen planting
 - CM11 – Minimise disturbance footprints
 - CM12 – Protection of existing water courses
 - CM13 – Hydroseeding on modified slopes
 - CM14 – Integrate open space network with existing nullah conditions
- Operation Mitigation (OM)**
- OM1 – Compensatory tree planting where practical
 - OM2 – Sensitive design of above-ground structures
 - OM3 – Sensitive design of hardscape elements along roadsides
 - OM4 – Reinstatement of streetscape elements
 - OM5 – Visual softening via soft landscape elements
 - OM6 – Quality greening along roadside amenity strips
 - OM7 – Design of street lighting
 - OM8 – Sensitive and chromatic treatment of architectural facades
 - OM9 – Sensitive design of landscape areas
 - OM10 – Sensitive design of vertical noise barriers and enclosures
 - OM11 – Tree planting to site boundaries
 - OM12 – Night time lighting
 - OM13 – Green roofs and vertical greening
 - OM14 – Greening of viaduct structures and noise barriers
- Note: CM1 - CM14, and other mitigation measures not shown in these figures, are considered best practices throughout the entire NDA and should be implemented to the fullest extent possible.



Agreement No. CE 2/2011 (CE)
 Hung Shui Kiu New Development Area Planning and Engineering Study - Investigation
Mitigation Measures Enlargement Plan 02

SCALE	1:5,000@A3	DATE	AUG 2016
CHECK	AM	DRAWN	PN
JOB No.	60222570	FIGURE	11.6b
		REV	



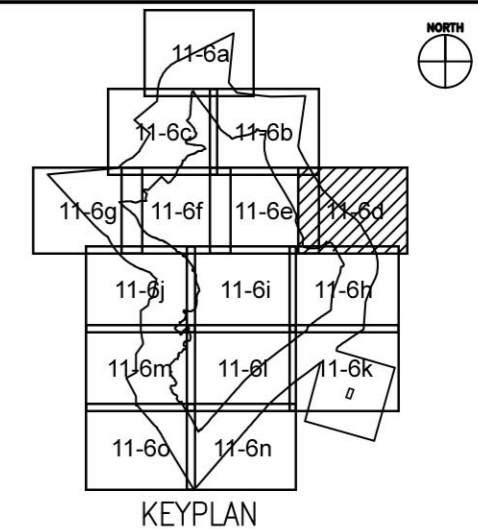
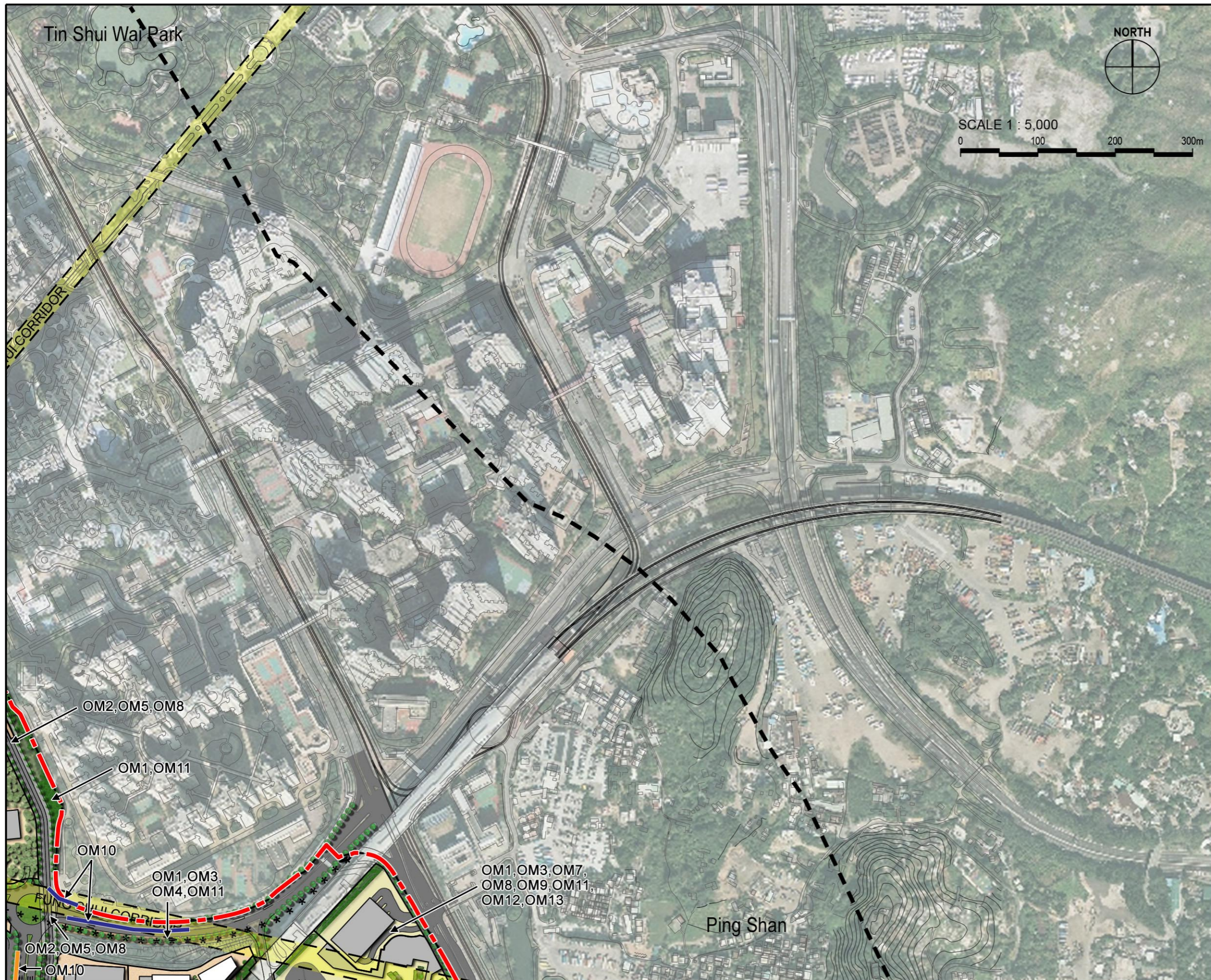
- LEGEND**
- 500m Assessment Area Boundary
 - - - Project Boundary
 - 5.5+4.2m at 45° Cantilever
 - 6+4.2m at 45° Cantilever
 - 3m Vertical Noise Barrier
 - 4m Vertical Noise Barrier
 - 5m Vertical Noise Barrier
 - 6m Vertical Noise Barrier
 - 7m Vertical Noise Barrier

- Mitigation Measures**
- Construction Mitigation (CM)**
- CM1 – Minimised construction area and contractor's temporary works areas
 - CM2 – Stripping and storing of topsoil
 - CM3 – Protection of existing trees
 - CM4 – Transplantation of existing trees where practical
 - CM5 – Control of night-time lighting
 - CM6 – Construction of decorative hoarding around construction works
 - CM7 – Reduction of construction period to practical minimum
 - CM8 – Prevention of run-off
 - CM9 – Phasing of construction stage
 - CM10 – Advance screen planting
 - CM11 – Minimise disturbance footprints
 - CM12 – Protection of existing water courses
 - CM13 – Hydroseeding on modified slopes
 - CM14 – Integrate open space network with existing nullah conditions
- Operation Mitigation (OM)**
- OM1 – Compensatory tree planting where practical
 - OM2 – Sensitive design of above-ground structures
 - OM3 – Sensitive design of hardscape elements along roadsides
 - OM4 – Reinstatement of streetscape elements
 - OM5 – Visual softening via soft landscape elements
 - OM6 – Quality greening along roadside amenity strips
 - OM7 – Design of street lighting
 - OM8 – Sensitive and chromatic treatment of architectural facades
 - OM9 – Sensitive design of landscape areas
 - OM10 – Sensitive design of vertical noise barriers and enclosures
 - OM11 – Tree planting to site boundaries
 - OM12 – Night time lighting
 - OM13 – Green roofs and vertical greening
 - OM14 – Greening of viaduct structures and noise barriers
- Note: CM1 - CM14, and other mitigation measures not shown in these figures, are considered best practices throughout the entire NDA and should be implemented to the fullest extent possible.



Agreement No. CE 2/2011 (CE)
 Hung Shui Kiu New Development Area Planning and Engineering Study - Investigation
Mitigation Measures Enlargement Plan 03

SCALE	1:5,000@A3	DATE	AUG 2016
CHECK	AM	DRAWN	PN
JOB No.	60222570	FIGURE	11.6c
		REV	



LEGEND

- 500m Assessment Area Boundary
- Project Boundary
- 5.5+4.2m at 45° Cantilever
- 6+4.2m at 45° Cantilever
- 3m Vertical Noise Barrier
- 4m Vertical Noise Barrier
- 5m Vertical Noise Barrier
- 6m Vertical Noise Barrier
- 7m Vertical Noise Barrier

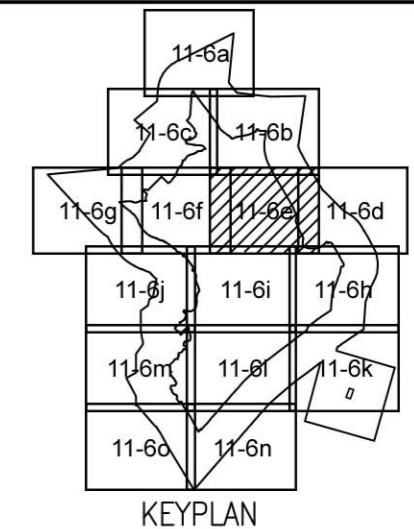
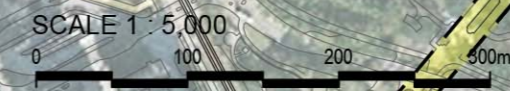
Mitigation Measures

- Construction Mitigation (CM)**
- CM1 – Minimised construction area and contractor's temporary works areas
 - CM2 – Stripping and storing of topsoil
 - CM3 – Protection of existing trees
 - CM4 – Transplantation of existing trees where practical
 - CM5 – Control of night-time lighting
 - CM6 – Construction of decorative hoarding around construction works
 - CM7 – Reduction of construction period to practical minimum
 - CM8 – Prevention of run-off
 - CM9 – Phasing of construction stage
 - CM10 – Advance screen planting
 - CM11 – Minimise disturbance footprints
 - CM12 – Protection of existing water courses
 - CM13 – Hydroseeding on modified slopes
 - CM14 – Integrate open space network with existing nullah conditions
- Operation Mitigation (OM)**
- OM1 – Compensatory tree planting where practical
 - OM2 – Sensitive design of above-ground structures
 - OM3 – Sensitive design of hardscape elements along roadsides
 - OM4 – Reinstatement of streetscape elements
 - OM5 – Visual softening via soft landscape elements
 - OM6 – Quality greening along roadside amenity strips
 - OM7 – Design of street lighting
 - OM8 – Sensitive and chromatic treatment of architectural facades
 - OM9 – Sensitive design of landscape areas
 - OM10 – Sensitive design of vertical noise barriers and enclosures
 - OM11 – Tree planting to site boundaries
 - OM12 – Night time lighting
 - OM13 – Green roofs and vertical greening
 - OM14 – Greening of viaduct structures and noise barriers
- Note: CM1 - CM14, and other mitigation measures not shown in these figures, are considered best practices throughout the entire NDA and should be implemented to the fullest extent possible.



Agreement No. CE 2/2011 (CE)
 Hung Shui Kiu New Development Area Planning and Engineering Study - Investigation
Mitigation Measures Enlargement Plan 04

SCALE	1:5,000@A3	DATE	AUG 2016
CHECK	AM	DRAWN	PN
JOB No.	60222570	FIGURE	11.6d
		REV	



LEGEND

- 500m Assessment Area Boundary
- Project Boundary
- 5.5+4.2m at 45° Cantilever
- 6+4.2m at 45° Cantilever
- 3m Vertical Noise Barrier
- 4m Vertical Noise Barrier
- 5m Vertical Noise Barrier
- 6m Vertical Noise Barrier
- 7m Vertical Noise Barrier

Mitigation Measures

- Construction Mitigation (CM)**
- CM1 - Minimised construction area and contractor's temporary works areas
 - CM2 - Stripping and storing of topsoil
 - CM3 - Protection of existing trees
 - CM4 - Transplantation of existing trees where practical
 - CM5 - Control of night-time lighting
 - CM6 - Construction of decorative hoarding around construction works
 - CM7 - Reduction of construction period to practical minimum
 - CM8 - Prevention of run-off
 - CM9 - Phasing of construction stage
 - CM10 - Advance screen planting
 - CM11 - Minimise disturbance footprints
 - CM12 - Protection of existing water courses
 - CM13 - Hydroseeding on modified slopes
 - CM14 - Integrate open space network with existing nullah conditions
- Operation Mitigation (OM)**
- OM1 - Compensatory tree planting where practical
 - OM2 - Sensitive design of above-ground structures
 - OM3 - Sensitive design of hardscape elements along roadsides
 - OM4 - Reinstatement of streetscape elements
 - OM5 - Visual softening via soft landscape elements
 - OM6 - Quality greening along roadside amenity strips
 - OM7 - Design of street lighting
 - OM8 - Sensitive and chromatic treatment of architectural facades
 - OM9 - Sensitive design of landscape areas
 - OM10 - Sensitive design of vertical noise barriers and enclosures
 - OM11 - Tree planting to site boundaries
 - OM12 - Night time lighting
 - OM13 - Green roofs and vertical greening
 - OM14 - Greening of viaduct structures and noise barriers

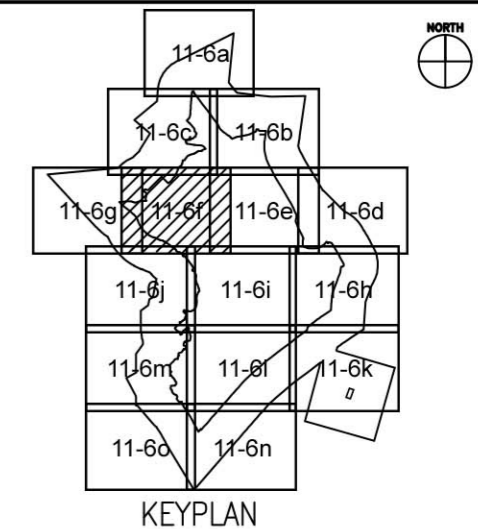
Note: CM1 - CM14, and other mitigation measures not shown in these figures, are considered best practices throughout the entire NDA and should be implemented to the fullest extent possible.



Agreement No. CE 2/2011 (CE)
Hung Shui Kiu New Development Area Planning and Engineering Study - Investigation

Mitigation Measures Enlargement Plan 05

SCALE	1:5,000@A3	DATE	AUG 2016
CHECK	AM	DRAWN	PN
JOB No.	60222570	FIGURE	11.6e
		REV	



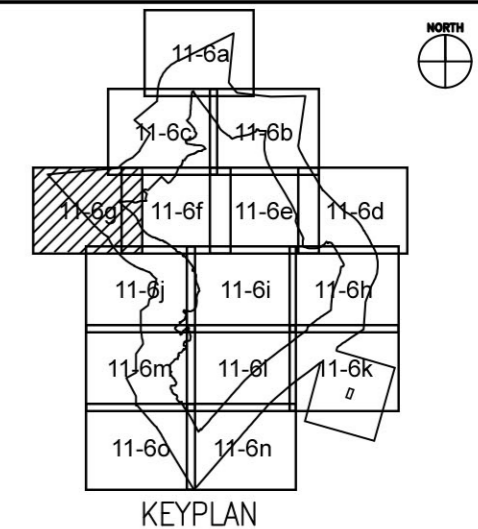
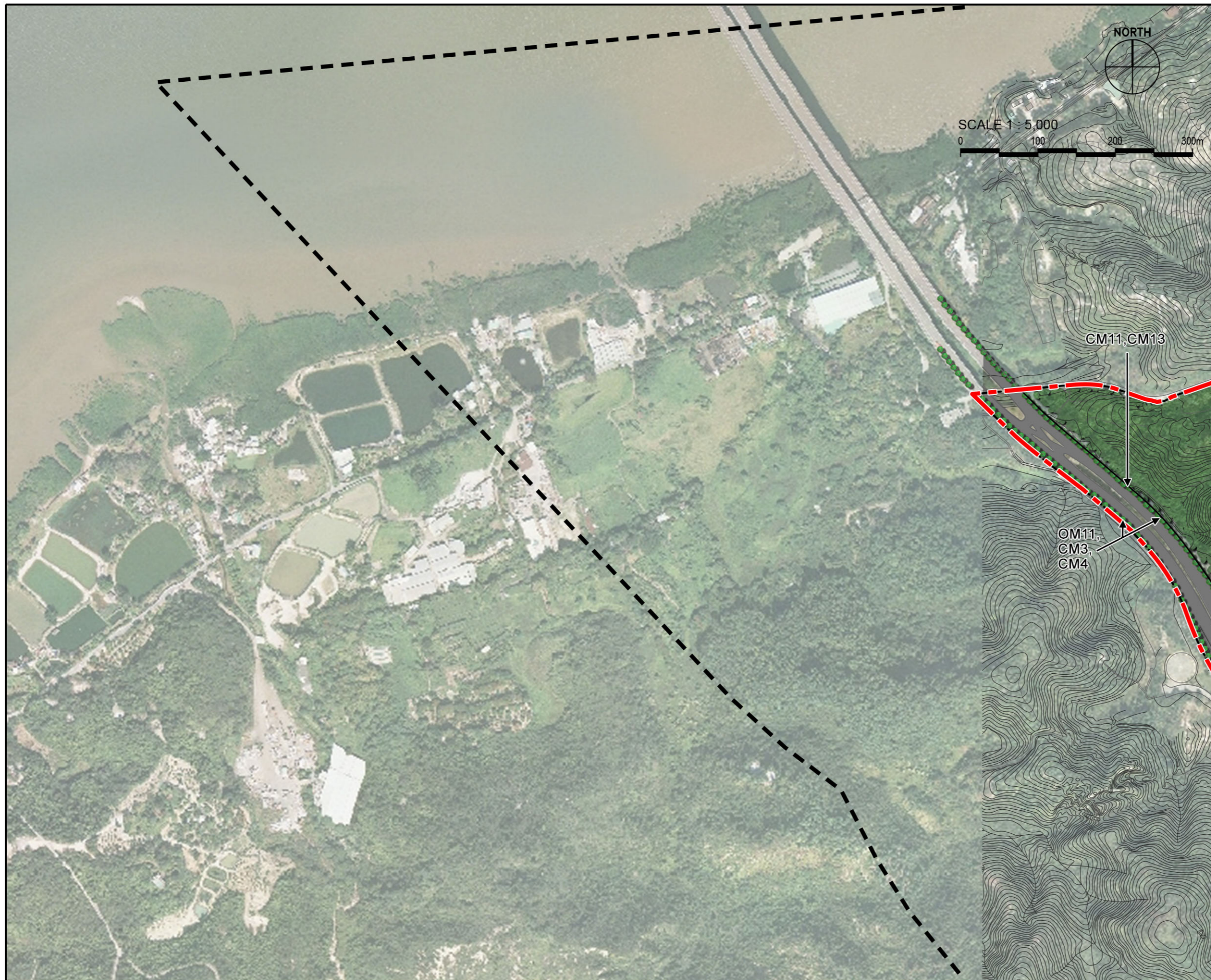
- LEGEND**
- 500m Assessment Area Boundary
 - Project Boundary
 - 5.5+4.2m at 45° Cantilever
 - 6+4.2m at 45° Cantilever
 - 3m Vertical Noise Barrier
 - 4m Vertical Noise Barrier
 - 5m Vertical Noise Barrier
 - 6m Vertical Noise Barrier
 - 7m Vertical Noise Barrier

- Mitigation Measures**
- Construction Mitigation (CM)**
- CM1 – Minimised construction area and contractor's temporary works areas
 - CM2 – Stripping and storing of topsoil
 - CM3 – Protection of existing trees
 - CM4 – Transplantation of existing trees where practical
 - CM5 – Control of night-time lighting
 - CM6 – Construction of decorative hoarding around construction works
 - CM7 – Reduction of construction period to practical minimum
 - CM8 – Prevention of run-off
 - CM9 – Phasing of construction stage
 - CM10 – Advance screen planting
 - CM11 – Minimise disturbance footprints
 - CM12 – Protection of existing water courses
 - CM13 – Hydroseeding on modified slopes
 - CM14 – Integrate open space network with existing nullah conditions
- Operation Mitigation (OM)**
- OM1 – Compensatory tree planting where practical
 - OM2 – Sensitive design of above-ground structures
 - OM3 – Sensitive design of hardscape elements along roadsides
 - OM4 – Reinstatement of streetscape elements
 - OM5 – Visual softening via soft landscape elements
 - OM6 – Quality greening along roadside amenity strips
 - OM7 – Design of street lighting
 - OM8 – Sensitive and chromatic treatment of architectural facades
 - OM9 – Sensitive design of landscape areas
 - OM10 – Sensitive design of vertical noise barriers and enclosures
 - OM11 – Tree planting to site boundaries
 - OM12 – Night time lighting
 - OM13 – Green roofs and vertical greening
 - OM14 – Greening of viaduct structures and noise barriers
- Note: CM1 - CM14, and other mitigation measures not shown in these figures, are considered best practices throughout the entire NDA and should be implemented to the fullest extent possible.



Agreement No. CE 2/2011 (CE)
 Hung Shui Kiu New Development Area Planning and Engineering Study - Investigation
Mitigation Measures Enlargement Plan 06

SCALE	1:5,000@A3	DATE	AUG 2016
CHECK	AM	DRAWN	PN
JOB No.	60222570	FIGURE	11.6f
		REV	



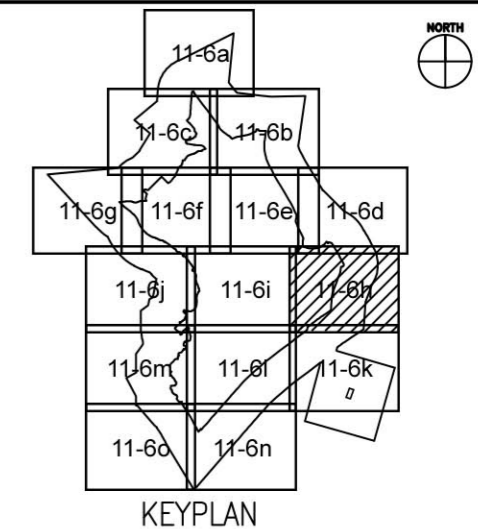
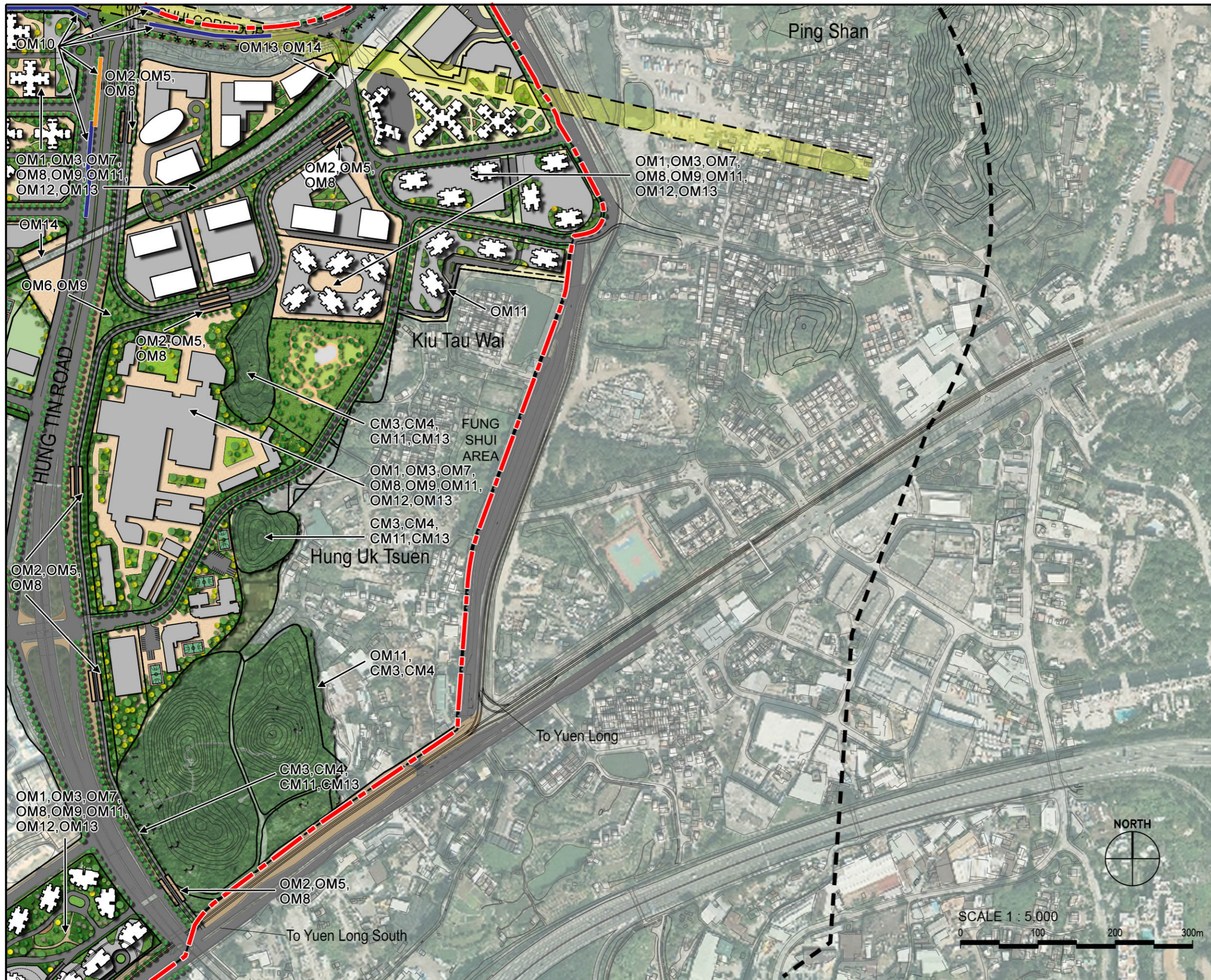
- LEGEND**
- 500m Assessment Area Boundary
 - Project Boundary
 - 5.5+4.2m at 45° Cantilever
 - 6+4.2m at 45° Cantilever
 - 3m Vertical Noise Barrier
 - 4m Vertical Noise Barrier
 - 5m Vertical Noise Barrier
 - 6m Vertical Noise Barrier
 - 7m Vertical Noise Barrier

- Mitigation Measures**
- Construction Mitigation (CM)**
- CM1 – Minimised construction area and contractor's temporary works areas
 - CM2 – Stripping and storing of topsoil
 - CM3 – Protection of existing trees
 - CM4 – Transplantation of existing trees where practical
 - CM5 – Control of night-time lighting
 - CM6 – Construction of decorative hoarding around construction works
 - CM7 – Reduction of construction period to practical minimum
 - CM8 – Prevention of run-off
 - CM9 – Phasing of construction stage
 - CM10 – Advance screen planting
 - CM11 – Minimise disturbance footprints
 - CM12 – Protection of existing water courses
 - CM13 – Hydroseeding on modified slopes
 - CM14 – Integrate open space network with existing nullah conditions
- Operation Mitigation (OM)**
- OM1 – Compensatory tree planting where practical
 - OM2 – Sensitive design of above-ground structures
 - OM3 – Sensitive design of hardscape elements along roadsides
 - OM4 – Reinstatement of streetscape elements
 - OM5 – Visual softening via soft landscape elements
 - OM6 – Quality greening along roadside amenity strips
 - OM7 – Design of street lighting
 - OM8 – Sensitive and chromatic treatment of architectural facades
 - OM9 – Sensitive design of landscape areas
 - OM10 – Sensitive design of vertical noise barriers and enclosures
 - OM11 – Tree planting to site boundaries
 - OM12 – Night time lighting
 - OM13 – Green roofs and vertical greening
 - OM14 – Greening of viaduct structures and noise barriers
- Note: CM1 - CM14, and other mitigation measures not shown in these figures, are considered best practices throughout the entire NDA and should be implemented to the fullest extent possible.



Agreement No. CE 2/2011 (CE)
 Hung Shui Kiu New Development Area Planning and Engineering Study - Investigation
Mitigation Measures Enlargement Plan 07

SCALE	1:5,000@A3	DATE	AUG 2016
CHECK	AM	DRAWN	PN
JOB No.	60222570	FIGURE	11.6g
		REV	



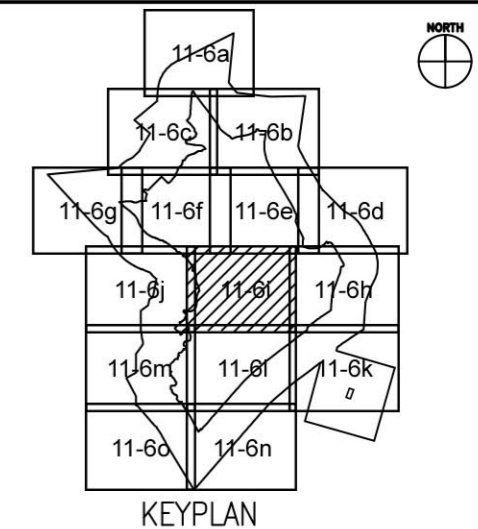
- LEGEND**
- 500m Assessment Area Boundary
 - - - Project Boundary
 - 5.5+4.2m at 45° Cantilever
 - 6+4.2m at 45° Cantilever
 - 3m Vertical Noise Barrier
 - 4m Vertical Noise Barrier
 - 5m Vertical Noise Barrier
 - 6m Vertical Noise Barrier
 - 7m Vertical Noise Barrier

- Mitigation Measures**
- Construction Mitigation (CM)**
- CM1 – Minimised construction area and contractor’s temporary works areas
 - CM2 – Stripping and storing of topsoil
 - CM3 – Protection of existing trees
 - CM4 – Transplantation of existing trees where practical
 - CM5 – Control of night-time lighting
 - CM6 – Construction of decorative hoarding around construction works
 - CM7 – Reduction of construction period to practical minimum
 - CM8 – Prevention of run-off
 - CM9 – Phasing of construction stage
 - CM10 – Advance screen planting
 - CM11 – Minimise disturbance footprints
 - CM12 – Protection of existing water courses
 - CM13 – Hydroseeding on modified slopes
 - CM14 – Integrate open space network with existing nullah conditions
- Operation Mitigation (OM)**
- OM1 – Compensatory tree planting where practical
 - OM2 – Sensitive design of above-ground structures
 - OM3 – Sensitive design of hardscape elements along roadsides
 - OM4 – Reinstatement of streetscape elements
 - OM5 – Visual softening via soft landscape elements
 - OM6 – Quality greening along roadside amenity strips
 - OM7 – Design of street lighting
 - OM8 – Sensitive and chromatic treatment of architectural facades
 - OM9 – Sensitive design of landscape areas
 - OM10 – Sensitive design of vertical noise barriers and enclosures
 - OM11 – Tree planting to site boundaries
 - OM12 – Night time lighting
 - OM13 – Green roofs and vertical greening
 - OM14 – Greening of viaduct structures and noise barriers
- Note: CM1 - CM14, and other mitigation measures not shown in these figures, are considered best practices throughout the entire NDA and should be implemented to the fullest extent possible.



Agreement No. CE 2/2011 (CE)
 Hung Shui Kiu New Development Area Planning and Engineering Study - Investigation
Mitigation Measures Enlargement Plan 08

SCALE	1:5,000@A3	DATE	AUG 2016
CHECK	AM	DRAWN	PN
JOB No.	60222570	FIGURE	11.6h
		REV	



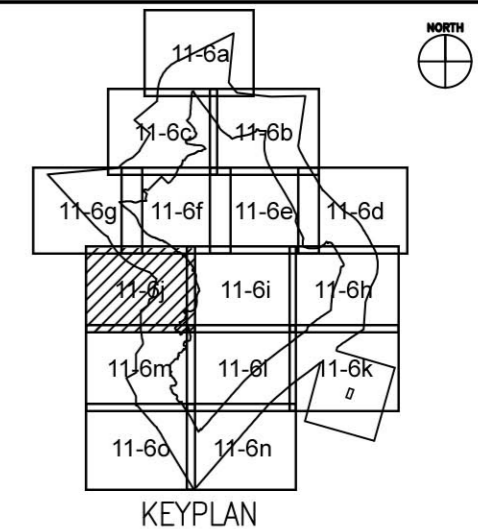
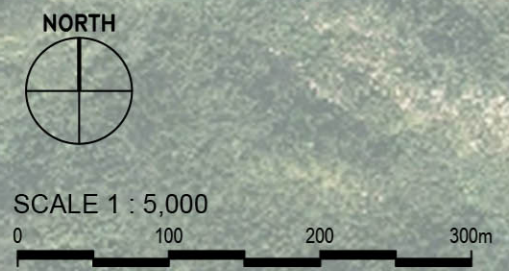
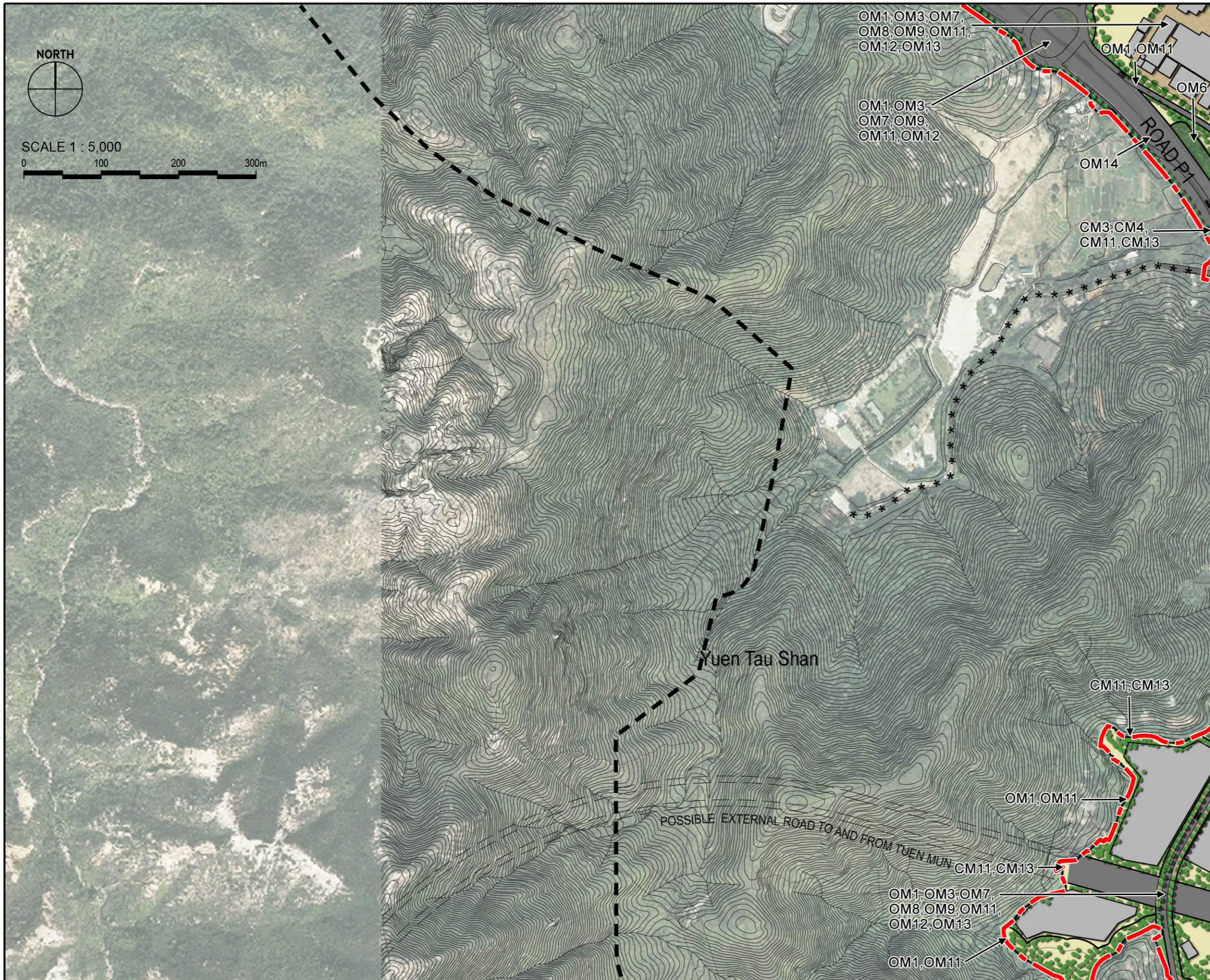
- LEGEND**
- 500m Assessment Area Boundary
 - Project Boundary
 - 5.5+4.2m at 45° Cantilever
 - 6+4.2m at 45° Cantilever
 - 3m Vertical Noise Barrier
 - 4m Vertical Noise Barrier
 - 5m Vertical Noise Barrier
 - 6m Vertical Noise Barrier
 - 7m Vertical Noise Barrier

- Mitigation Measures**
- Construction Mitigation (CM)**
- CM1 – Minimised construction area and contractor's temporary works areas
 - CM2 – Stripping and storing of topsoil
 - CM3 – Protection of existing trees
 - CM4 – Transplantation of existing trees where practical
 - CM5 – Control of night-time lighting
 - CM6 – Construction of decorative hoarding around construction works
 - CM7 – Reduction of construction period to practical minimum
 - CM8 – Prevention of run-off
 - CM9 – Phasing of construction stage
 - CM10 – Advance screen planting
 - CM11 – Minimise disturbance footprints
 - CM12 – Protection of existing water courses
 - CM13 – Hydroseeding on modified slopes
 - CM14 – Integrate open space network with existing nullah conditions
- Operation Mitigation (OM)**
- OM1 – Compensatory tree planting where practical
 - OM2 – Sensitive design of above-ground structures
 - OM3 – Sensitive design of hardscape elements along roadsides
 - OM4 – Reinstatement of streetscape elements
 - OM5 – Visual softening via soft landscape elements
 - OM6 – Quality greening along roadside amenity strips
 - OM7 – Design of street lighting
 - OM8 – Sensitive and chromatic treatment of architectural facades
 - OM9 – Sensitive design of landscape areas
 - OM10 – Sensitive design of vertical noise barriers and enclosures
 - OM11 – Tree planting to site boundaries
 - OM12 – Night time lighting
 - OM13 – Green roofs and vertical greening
 - OM14 – Greening of viaduct structures and noise barriers
- Note: CM1 - CM14, and other mitigation measures not shown in these figures, are considered best practices throughout the entire NDA and should be implemented to the fullest extent possible.



Agreement No. CE 2/2011 (CE)
 Hung Shui Kiu New Development Area Planning and Engineering Study - Investigation
Mitigation Measures Enlargement Plan 09

SCALE	1:5,000@A3	DATE	AUG 2016
CHECK	AM	DRAWN	PN
JOB No.	60222570	FIGURE	11.6i
		REV	



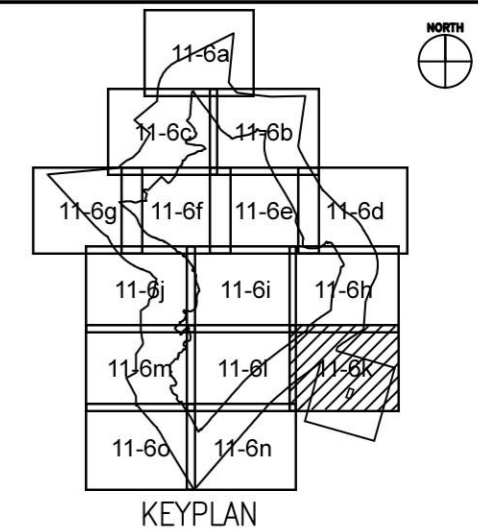
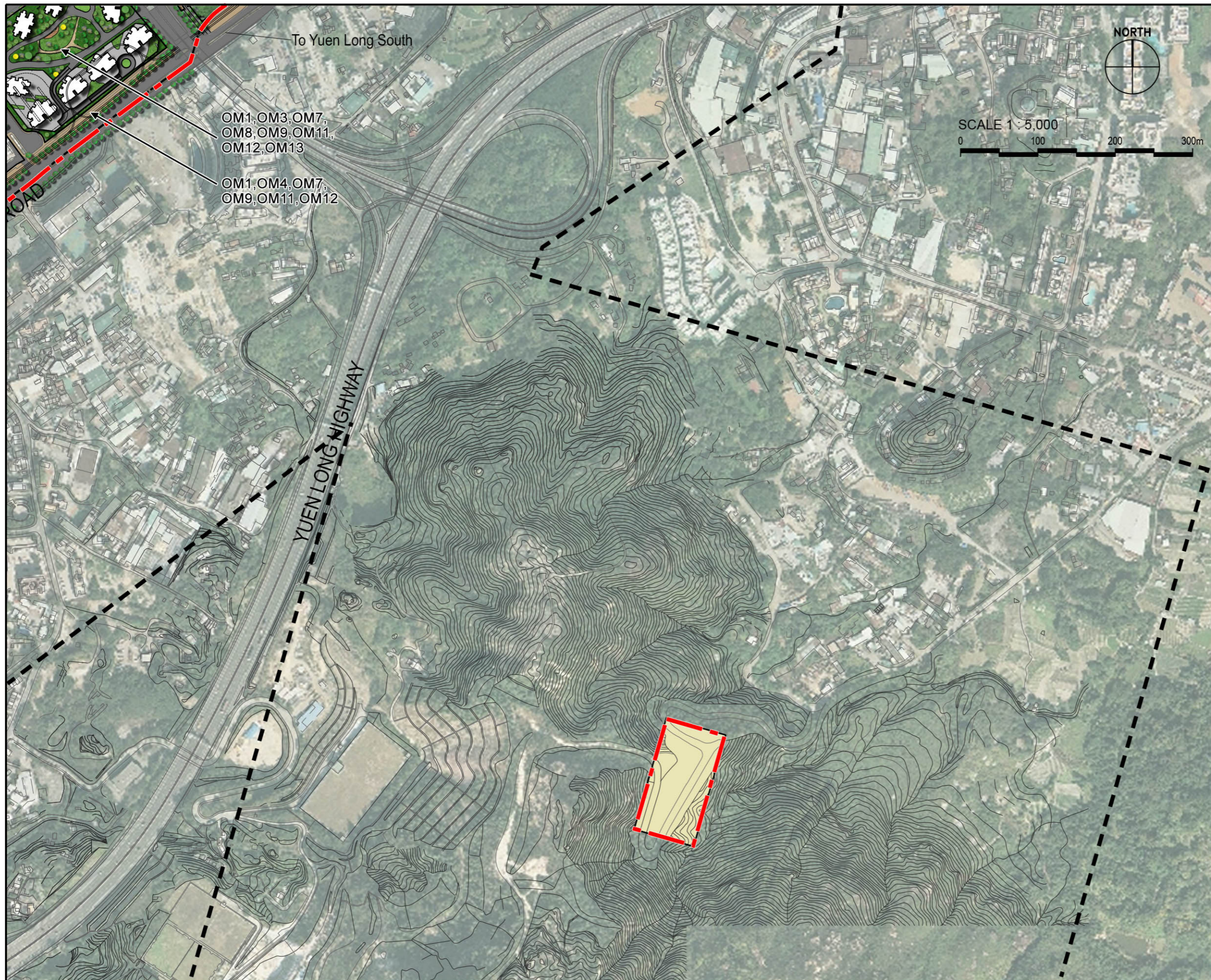
- LEGEND**
- 500m Assessment Area Boundary
 - - - Project Boundary
 - 5.5+4.2m at 45° Cantilever
 - 6+4.2m at 45° Cantilever
 - 3m Vertical Noise Barrier
 - 4m Vertical Noise Barrier
 - 5m Vertical Noise Barrier
 - 6m Vertical Noise Barrier
 - 7m Vertical Noise Barrier

- Mitigation Measures**
- Construction Mitigation (CM)**
- CM1 – Minimised construction area and contractor's temporary works areas
 - CM2 – Stripping and storing of topsoil
 - CM3 – Protection of existing trees
 - CM4 – Transplantation of existing trees where practical
 - CM5 – Control of night-time lighting
 - CM6 – Construction of decorative hoarding around construction works
 - CM7 – Reduction of construction period to practical minimum
 - CM8 – Prevention of run-off
 - CM9 – Phasing of construction stage
 - CM10 – Advance screen planting
 - CM11 – Minimise disturbance footprints
 - CM12 – Protection of existing water courses
 - CM13 – Hydroseeding on modified slopes
 - CM14 – Integrate open space network with existing nullah conditions
- Operation Mitigation (OM)**
- OM1 – Compensatory tree planting where practical
 - OM2 – Sensitive design of above-ground structures
 - OM3 – Sensitive design of hardscape elements along roadsides
 - OM4 – Reinstatement of streetscape elements
 - OM5 – Visual softening via soft landscape elements
 - OM6 – Quality greening along roadside amenity strips
 - OM7 – Design of street lighting
 - OM8 – Sensitive and chromatic treatment of architectural facades
 - OM9 – Sensitive design of landscape areas
 - OM10 – Sensitive design of vertical noise barriers and enclosures
 - OM11 – Tree planting to site boundaries
 - OM12 – Night time lighting
 - OM13 – Green roofs and vertical greening
 - OM14 – Greening of viaduct structures and noise barriers
- Note: CM1 - CM14, and other mitigation measures not shown in these figures, are considered best practices throughout the entire NDA and should be implemented to the fullest extent possible.



Agreement No. CE 2/2011 (CE)
 Hung Shui Kiu New Development Area Planning and Engineering Study - Investigation
Mitigation Measures Enlargement Plan 10

SCALE	1:5,000@A3	DATE	AUG 2016
CHECK	AM	DRAWN	PN
JOB No.	60222570	FIGURE	11.6j
		REV	



LEGEND

- 500m Assessment Area Boundary
- - - Project Boundary
- 5.5+4.2m at 45° Cantilever
- 6+4.2m at 45° Cantilever
- 3m Vertical Noise Barrier
- 4m Vertical Noise Barrier
- 5m Vertical Noise Barrier
- 6m Vertical Noise Barrier
- 7m Vertical Noise Barrier

Mitigation Measures

- Construction Mitigation (CM)**
- CM1 – Minimised construction area and contractor's temporary works areas
 - CM2 – Stripping and storing of topsoil
 - CM3 – Protection of existing trees
 - CM4 – Transplantation of existing trees where practical
 - CM5 – Control of night-time lighting
 - CM6 – Construction of decorative hoarding around construction works
 - CM7 – Reduction of construction period to practical minimum
 - CM8 – Prevention of run-off
 - CM9 – Phasing of construction stage
 - CM10 – Advance screen planting
 - CM11 – Minimise disturbance footprints
 - CM12 – Protection of existing water courses
 - CM13 – Hydroseeding on modified slopes
 - CM14 – Integrate open space network with existing nullah conditions
- Operation Mitigation (OM)**
- OM1 – Compensatory tree planting where practical
 - OM2 – Sensitive design of above-ground structures
 - OM3 – Sensitive design of hardscape elements along roadsides
 - OM4 – Reinstatement of streetscape elements
 - OM5 – Visual softening via soft landscape elements
 - OM6 – Quality greening along roadside amenity strips
 - OM7 – Design of street lighting
 - OM8 – Sensitive and chromatic treatment of architectural facades
 - OM9 – Sensitive design of landscape areas
 - OM10 – Sensitive design of vertical noise barriers and enclosures
 - OM11 – Tree planting to site boundaries
 - OM12 – Night time lighting
 - OM13 – Green roofs and vertical greening
 - OM14 – Greening of viaduct structures and noise barriers

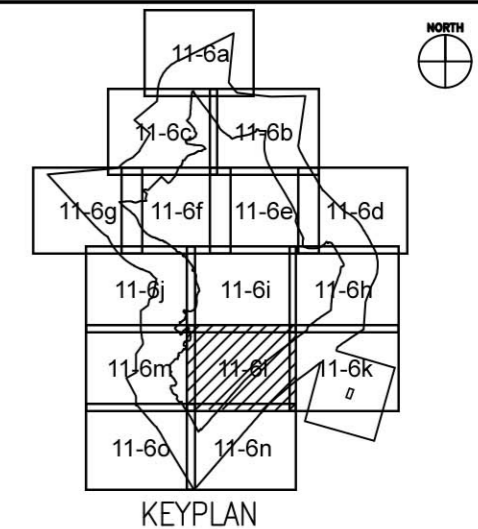
Note: CM1 - CM14, and other mitigation measures not shown in these figures, are considered best practices throughout the entire NDA and should be implemented to the fullest extent possible.



Agreement No. CE 2/2011 (CE)
Hung Shui Kiu New Development Area Planning and Engineering Study - Investigation

Mitigation Measures Enlargement Plan 11

SCALE	1:5,000@A3	DATE	AUG 2016
CHECK	AM	DRAWN	PN
JOB No.	60222570	FIGURE	11.6k
		REV	



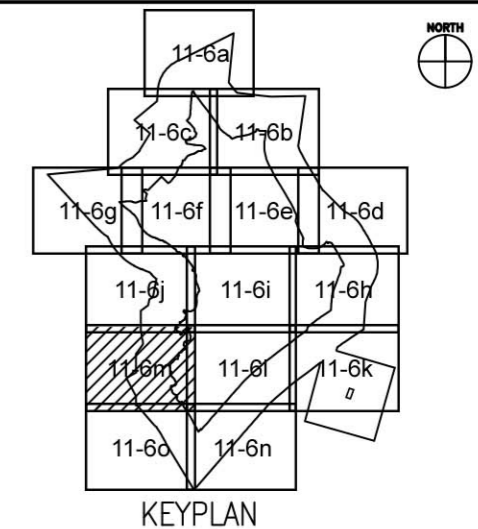
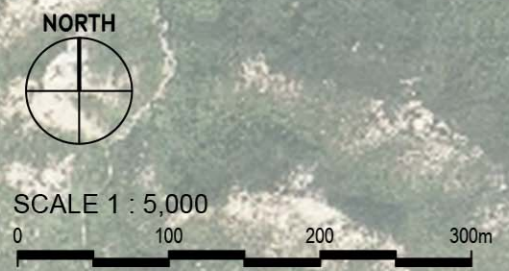
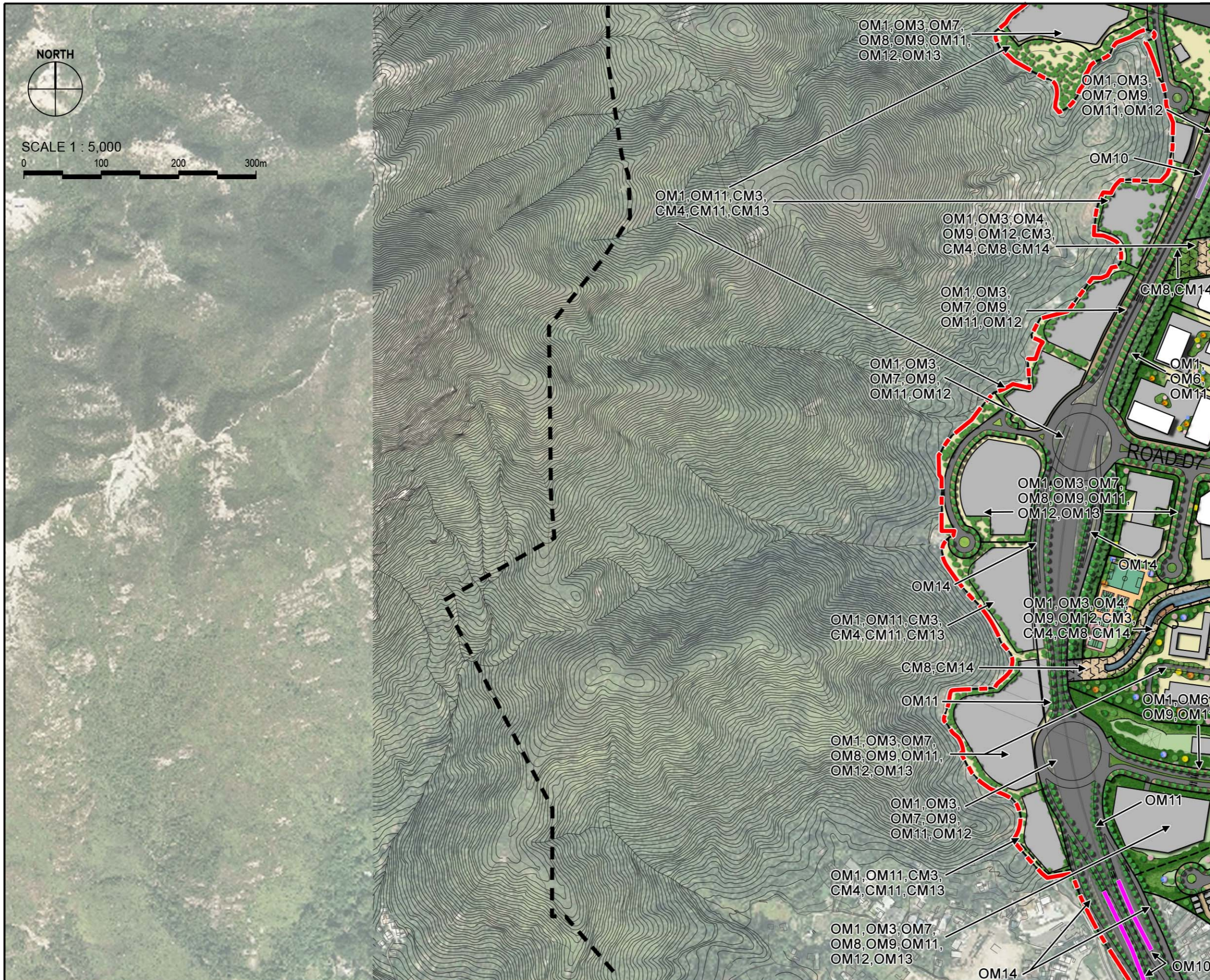
- LEGEND**
- 500m Assessment Area Boundary
 - Project Boundary
 - 5.5+4.2m at 45° Cantilever
 - 6+4.2m at 45° Cantilever
 - 3m Vertical Noise Barrier
 - 4m Vertical Noise Barrier
 - 5m Vertical Noise Barrier
 - 6m Vertical Noise Barrier
 - 7m Vertical Noise Barrier

- Mitigation Measures**
- Construction Mitigation (CM)**
- CM1 – Minimised construction area and contractor's temporary works areas
 - CM2 – Stripping and storing of topsoil
 - CM3 – Protection of existing trees
 - CM4 – Transplantation of existing trees where practical
 - CM5 – Control of night-time lighting
 - CM6 – Construction of decorative hoarding around construction works
 - CM7 – Reduction of construction period to practical minimum
 - CM8 – Prevention of run-off
 - CM9 – Phasing of construction stage
 - CM10 – Advance screen planting
 - CM11 – Minimise disturbance footprints
 - CM12 – Protection of existing water courses
 - CM13 – Hydroseeding on modified slopes
 - CM14 – Integrate open space network with existing nullah conditions
- Operation Mitigation (OM)**
- OM1 – Compensatory tree planting where practical
 - OM2 – Sensitive design of above-ground structures
 - OM3 – Sensitive design of hardscape elements along roadsides
 - OM4 – Reinstatement of streetscape elements
 - OM5 – Visual softening via soft landscape elements
 - OM6 – Quality greening along roadside amenity strips
 - OM7 – Design of street lighting
 - OM8 – Sensitive and chromatic treatment of architectural facades
 - OM9 – Sensitive design of landscape areas
 - OM10 – Sensitive design of vertical noise barriers and enclosures
 - OM11 – Tree planting to site boundaries
 - OM12 – Night time lighting
 - OM13 – Green roofs and vertical greening
 - OM14 – Greening of viaduct structures and noise barriers
- Note: CM1 - CM14, and other mitigation measures not shown in these figures, are considered best practices throughout the entire NDA and should be implemented to the fullest extent possible.



Agreement No. CE 2/2011 (CE)
 Hung Shui Kiu New Development Area Planning and Engineering Study - Investigation
Mitigation Measures Enlargement Plan 12

SCALE	1:5,000@A3	DATE	AUG 2016
CHECK	AM	DRAWN	PN
JOB No.	60222570	FIGURE 11.6I	REV



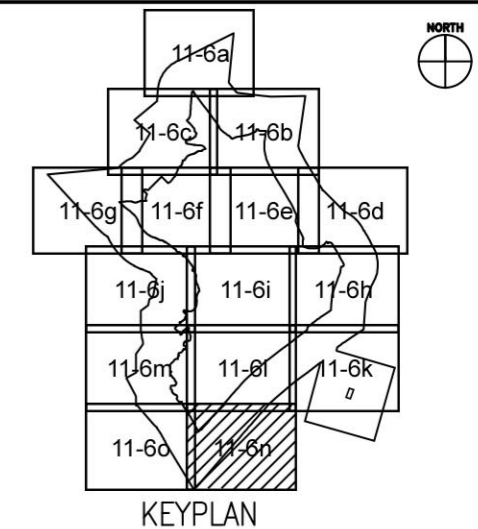
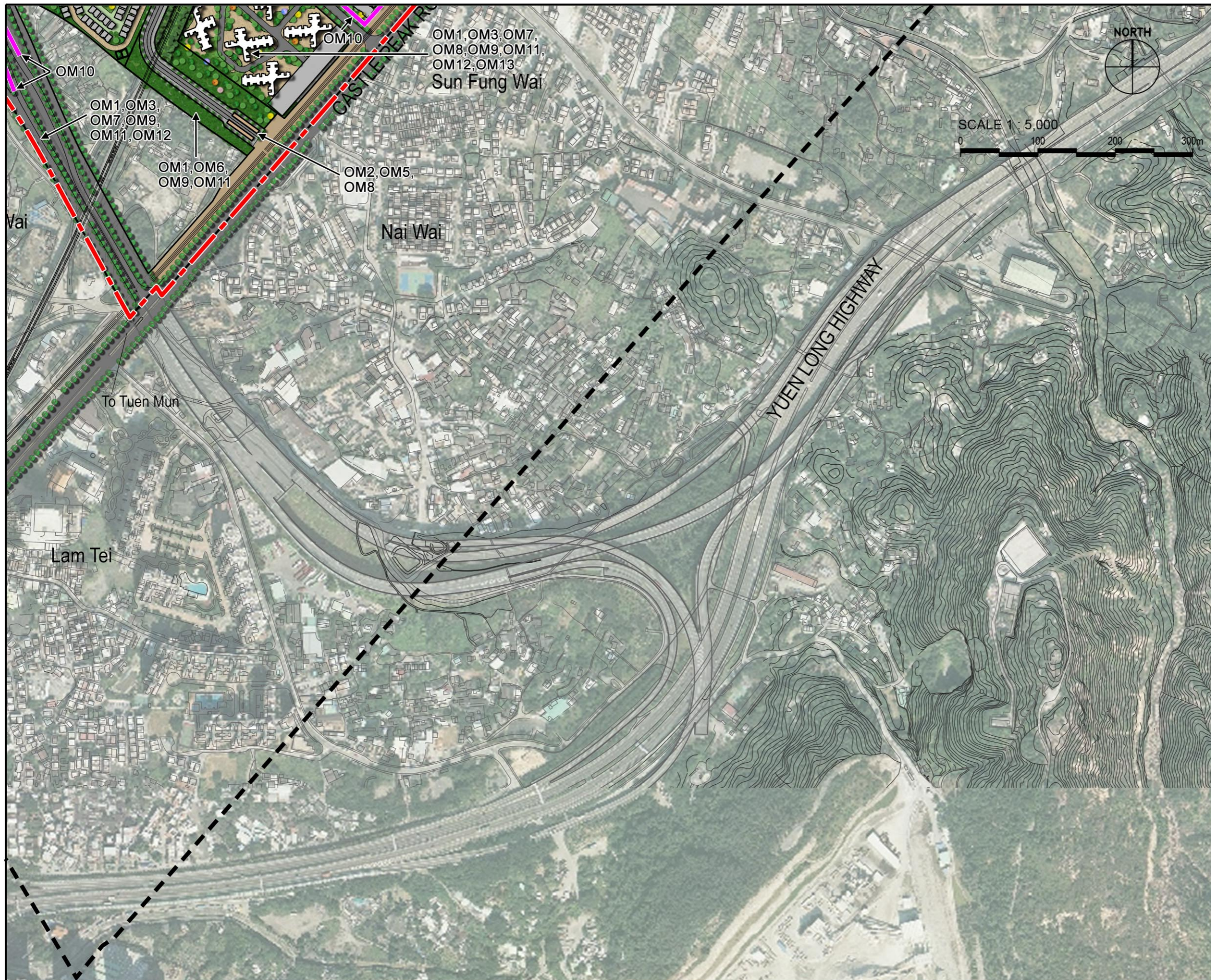
- LEGEND**
- 500m Assessment Area Boundary
 - Project Boundary
 - 5.5+4.2m at 45° Cantilever
 - 6+4.2m at 45° Cantilever
 - 3m Vertical Noise Barrier
 - 4m Vertical Noise Barrier
 - 5m Vertical Noise Barrier
 - 6m Vertical Noise Barrier
 - 7m Vertical Noise Barrier

- Mitigation Measures**
- Construction Mitigation (CM)**
- CM1 – Minimised construction area and contractor’s temporary works areas
 - CM2 – Stripping and storing of topsoil
 - CM3 – Protection of existing trees
 - CM4 – Transplantation of existing trees where practical
 - CM5 – Control of night-time lighting
 - CM6 – Construction of decorative hoarding around construction works
 - CM7 – Reduction of construction period to practical minimum
 - CM8 – Prevention of run-off
 - CM9 – Phasing of construction stage
 - CM10 – Advance screen planting
 - CM11 – Minimise disturbance footprints
 - CM12 – Protection of existing water courses
 - CM13 – Hydroseeding on modified slopes
 - CM14 – Integrate open space network with existing nullah conditions
- Operation Mitigation (OM)**
- OM1 – Compensatory tree planting where practical
 - OM2 – Sensitive design of above-ground structures
 - OM3 – Sensitive design of hardscape elements along roadsides
 - OM4 – Reinstatement of streetscape elements
 - OM5 – Visual softening via soft landscape elements
 - OM6 – Quality greening along roadside amenity strips
 - OM7 – Design of street lighting
 - OM8 – Sensitive and chromatic treatment of architectural facades
 - OM9 – Sensitive design of landscape areas
 - OM10 – Sensitive design of vertical noise barriers and enclosures
 - OM11 – Tree planting to site boundaries
 - OM12 – Night time lighting
 - OM13 – Green roofs and vertical greening
 - OM14 – Greening of viaduct structures and noise barriers
- Note: CM1 - CM14, and other mitigation measures not shown in these figures, are considered best practices throughout the entire NDA and should be implemented to the fullest extent possible.



Agreement No. CE 2/2011 (CE)
 Hung Shui Kiu New Development Area Planning and Engineering Study - Investigation
Mitigation Measures Enlargement Plan 13

SCALE	1:5,000@A3	DATE	AUG 2016
CHECK	AM	DRAWN	PN
JOB No.	60222570	FIGURE	11.6m
		REV	



LEGEND

- 500m Assessment Area Boundary
- Project Boundary
- 5.5+4.2m at 45° Cantilever
- 6+4.2m at 45° Cantilever
- 3m Vertical Noise Barrier
- 4m Vertical Noise Barrier
- 5m Vertical Noise Barrier
- 6m Vertical Noise Barrier
- 7m Vertical Noise Barrier

Mitigation Measures

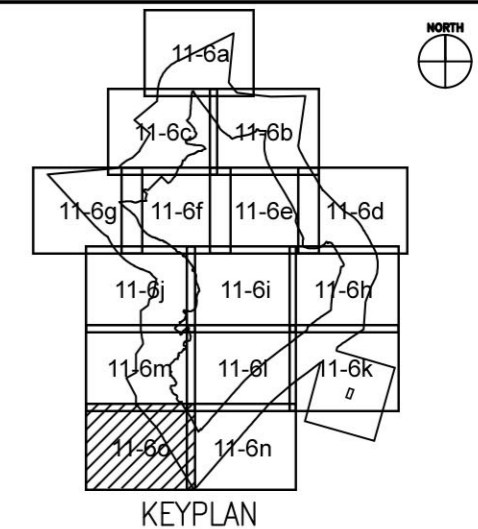
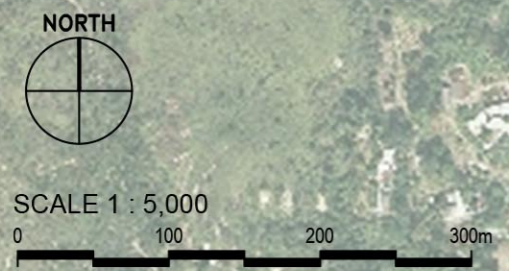
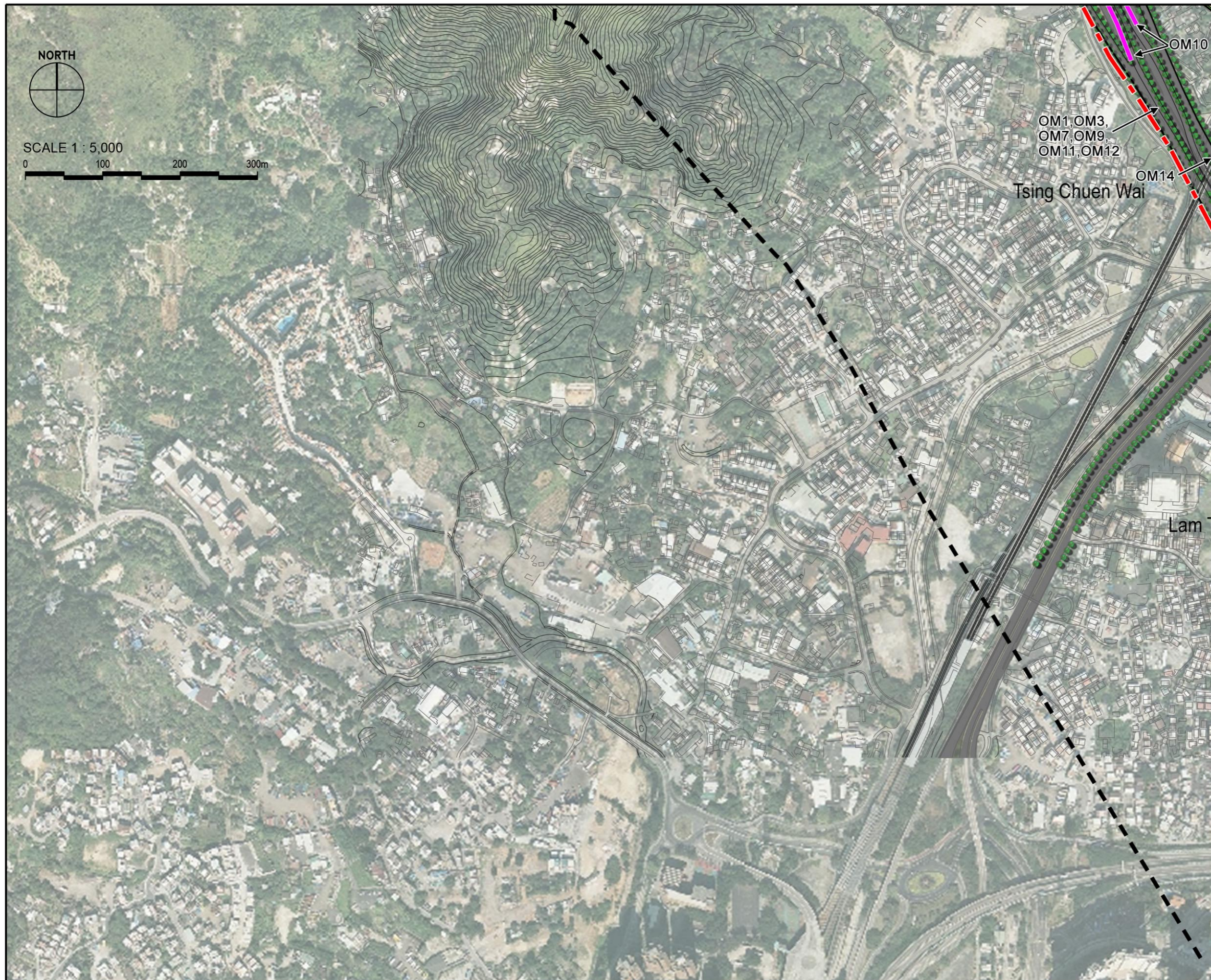
- Construction Mitigation (CM)**
- CM1 – Minimised construction area and contractor’s temporary works areas
 - CM2 – Stripping and storing of topsoil
 - CM3 – Protection of existing trees
 - CM4 – Transplantation of existing trees where practical
 - CM5 – Control of night-time lighting
 - CM6 – Construction of decorative hoarding around construction works
 - CM7 – Reduction of construction period to practical minimum
 - CM8 – Prevention of run-off
 - CM9 – Phasing of construction stage
 - CM10 – Advance screen planting
 - CM11 – Minimise disturbance footprints
 - CM12 – Protection of existing water courses
 - CM13 – Hydroseeding on modified slopes
 - CM14 – Integrate open space network with existing nullah conditions
- Operation Mitigation (OM)**
- OM1 – Compensatory tree planting where practical
 - OM2 – Sensitive design of above-ground structures
 - OM3 – Sensitive design of hardscape elements along roadsides
 - OM4 – Reinstatement of streetscape elements
 - OM5 – Visual softening via soft landscape elements
 - OM6 – Quality greening along roadside amenity strips
 - OM7 – Design of street lighting
 - OM8 – Sensitive and chromatic treatment of architectural facades
 - OM9 – Sensitive design of landscape areas
 - OM10 – Sensitive design of vertical noise barriers and enclosures
 - OM11 – Tree planting to site boundaries
 - OM12 – Night time lighting
 - OM13 – Green roofs and vertical greening
 - OM14 – Greening of viaduct structures and noise barriers

Note: CM1 - CM14, and other mitigation measures not shown in these figures, are considered best practices throughout the entire NDA and should be implemented to the fullest extent possible.



Agreement No. CE 2/2011 (CE)
 Hung Shui Kiu New Development Area Planning and Engineering Study - Investigation
Mitigation Measures Enlargement Plan 14

SCALE	1:5,000@A3	DATE	AUG 2016
CHECK	AM	DRAWN	PN
JOB No.	60222570	FIGURE	11.6n
		REV	



- LEGEND**
- 500m Assessment Area Boundary
 - - - Project Boundary
 - 5.5+4.2m at 45° Cantilever
 - 6+4.2m at 45° Cantilever
 - 3m Vertical Noise Barrier
 - 4m Vertical Noise Barrier
 - 5m Vertical Noise Barrier
 - 6m Vertical Noise Barrier
 - 7m Vertical Noise Barrier

- Mitigation Measures**
- Construction Mitigation (CM)**
- CM1 - Minimised construction area and contractor's temporary works areas
 - CM2 - Stripping and storing of topsoil
 - CM3 - Protection of existing trees
 - CM4 - Transplantation of existing trees where practical
 - CM5 - Control of night-time lighting
 - CM6 - Construction of decorative hoarding around construction works
 - CM7 - Reduction of construction period to practical minimum
 - CM8 - Prevention of run-off
 - CM9 - Phasing of construction stage
 - CM10 - Advance screen planting
 - CM11 - Minimise disturbance footprints
 - CM12 - Protection of existing water courses
 - CM13 - Hydroseeding on modified slopes
 - CM14 - Integrate open space network with existing nullah conditions
- Operation Mitigation (OM)**
- OM1 - Compensatory tree planting where practical
 - OM2 - Sensitive design of above-ground structures
 - OM3 - Sensitive design of hardscape elements along roadsides
 - OM4 - Reinstatement of streetscape elements
 - OM5 - Visual softening via soft landscape elements
 - OM6 - Quality greening along roadside amenity strips
 - OM7 - Design of street lighting
 - OM8 - Sensitive and chromatic treatment of architectural facades
 - OM9 - Sensitive design of landscape areas
 - OM10 - Sensitive design of vertical noise barriers and enclosures
 - OM11 - Tree planting to site boundaries
 - OM12 - Night time lighting
 - OM13 - Green roofs and vertical greening
 - OM14 - Greening of viaduct structures and noise barriers
- Note: CM1 - CM14, and other mitigation measures not shown in these figures, are considered best practices throughout the entire NDA and should be implemented to the fullest extent possible.



Agreement No. CE 2/2011 (CE)
 Hung Shui Kiu New Development Area Planning and Engineering Study - Investigation
Mitigation Measures Enlargement Plan 15

SCALE	1:5,000@A3	DATE	AUG 2016
CHECK	AM	DRAWN	PN
JOB No.	60222570	FIGURE	11.6o
		REV	