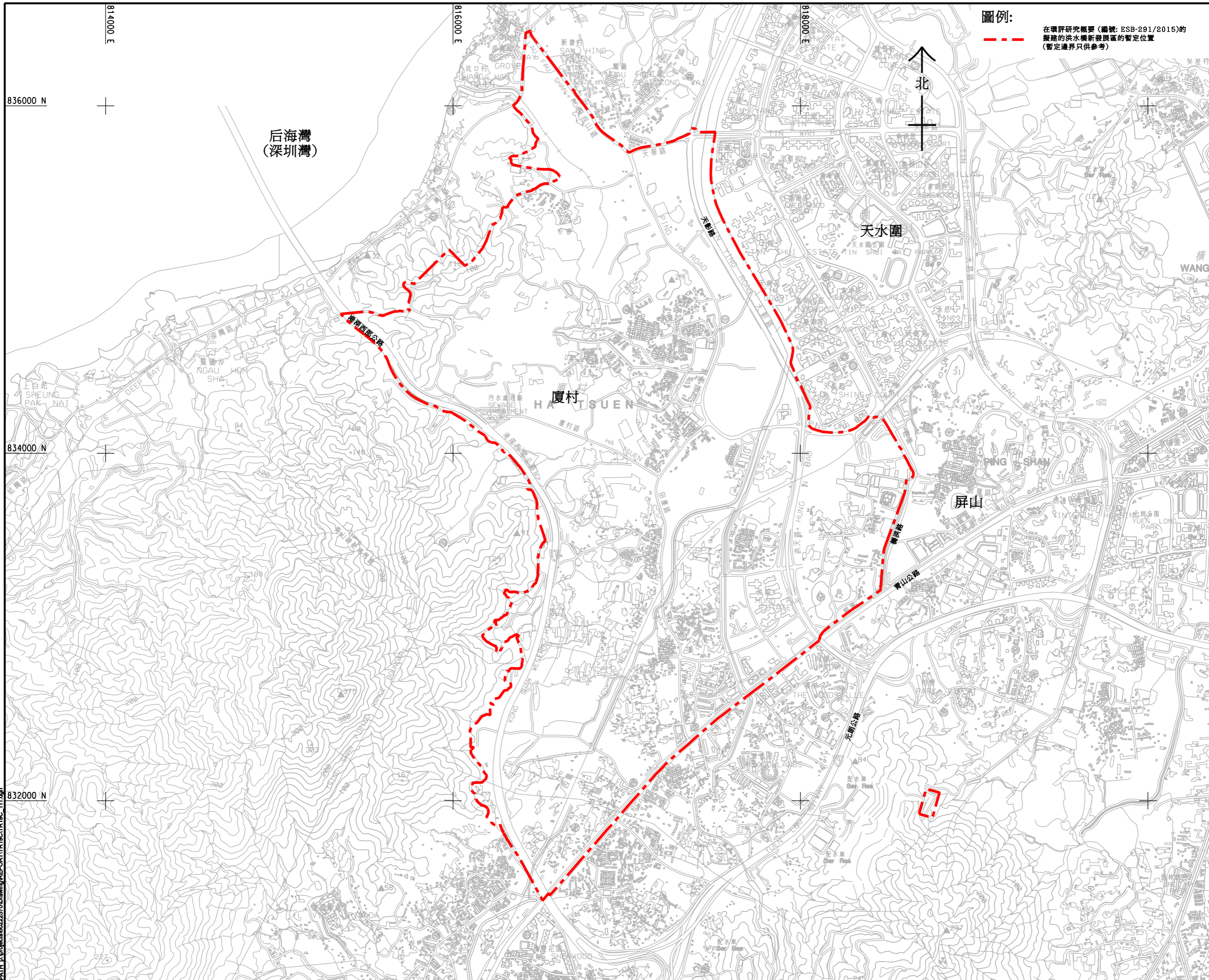


Pld File by: zhaohit
 PATH: F:\projects\60222570\Drawing\REPORT\TR19\CTR19C_111.dgn
 Project Management Initials: Designer: Checked: Approved: ISO A1 594mm x 841mm



圖例:
 在環評研究概要 (編號: ESB-291/2015) 的
 擬建的洪水橋新發展區的暫定位置
 (暫定邊界只供參考)

AECOM

PROJECT
 洪水橋新發展區
 規劃及工程研究
 - 勘查研究

CLIENT
 業主


 土木工程拓展署
 Civil Engineering and
 Development Department


 規劃署
 Planning
 Department

CONSULTANT
 工程顧問公司

AECOM Asia Company Ltd.
 www.aecom.com

SUB-CONSULTANTS
 分判工程顧問公司

ISSUE/REVISION
 修訂

IR	DATE	DESCRIPTION	CHK.

STATUS
 階段

SCALE
 比例

DIMENSION UNIT
 尺寸單位

A3 1 : 20000 METRES

KEY PLAN
 索引圖

PROJECT NO.
 項目編號

60222570

AGREEMENT NO.
 協議編號

CE2/2011 (CE)

SHEET TITLE
 圖紙名稱

位置圖

SHEET NUMBER
 圖紙編號

圖 1.1

This drawing has been prepared for the use of AECOM's client. It may not be used, modified, reproduced or relied upon by third parties, except as agreed by AECOM or as required by law. AECOM accepts no responsibility, and denies any liability whatsoever, to any party, for losses or claims on this drawing without AECOM's express written consent. Do not scale this document. All measurements must be obtained from the stated dimensions.