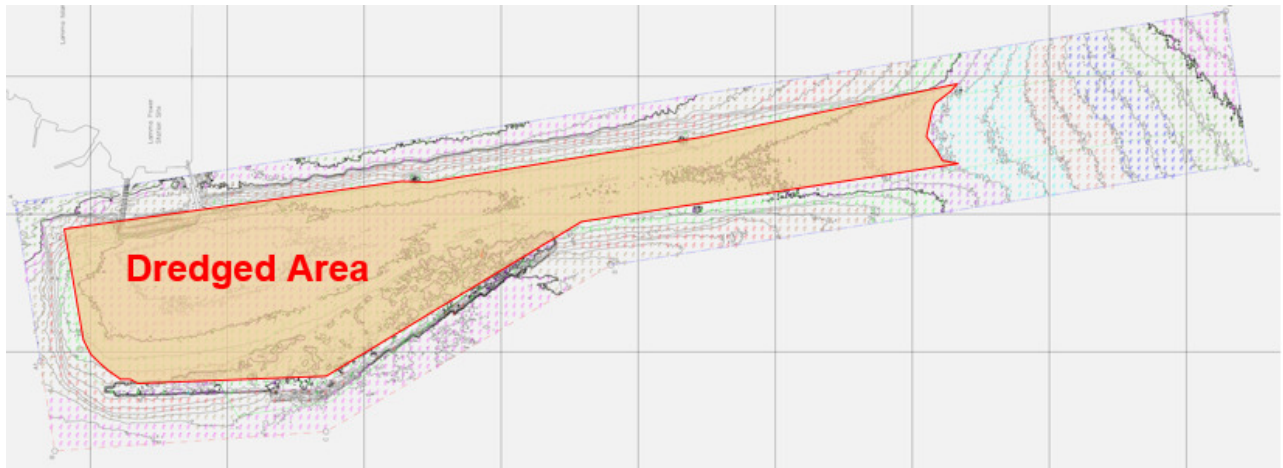
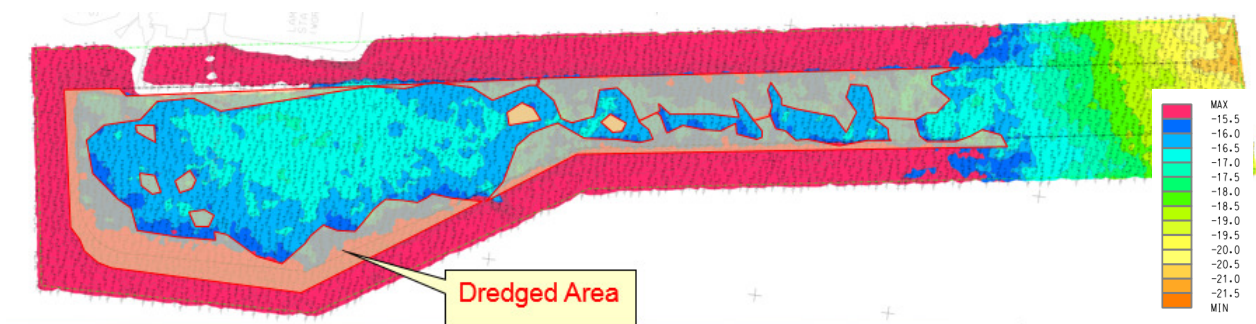


Appendix 1.1 Extracts of Past Bathymetry Surveys and Dredging Extents

2003-2004 (Full Re-profiling)



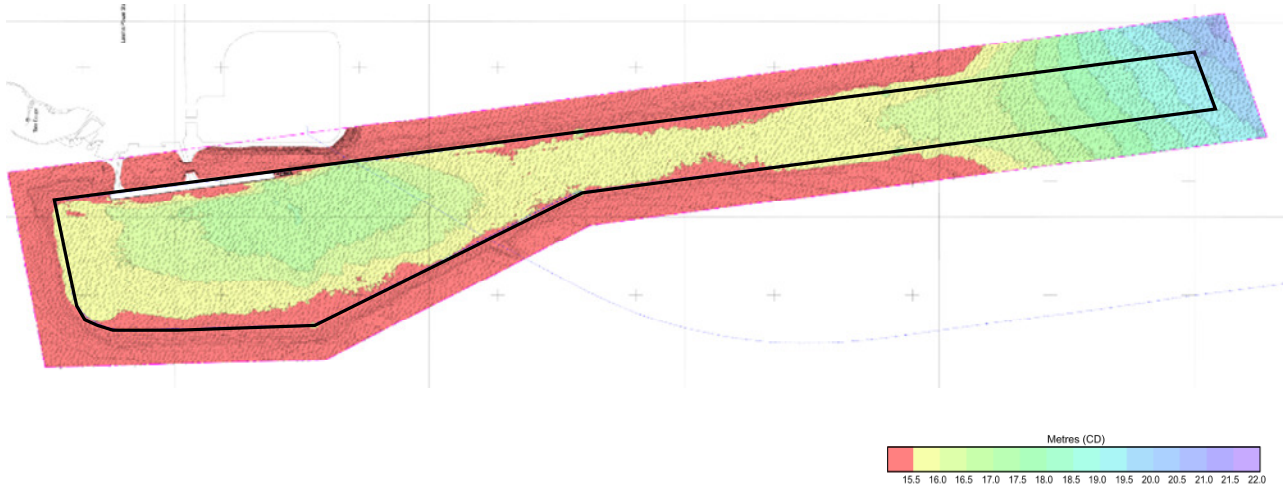
2009 (High Spot Dredging Only)



(Note: bathymetry survey taken in 2008)

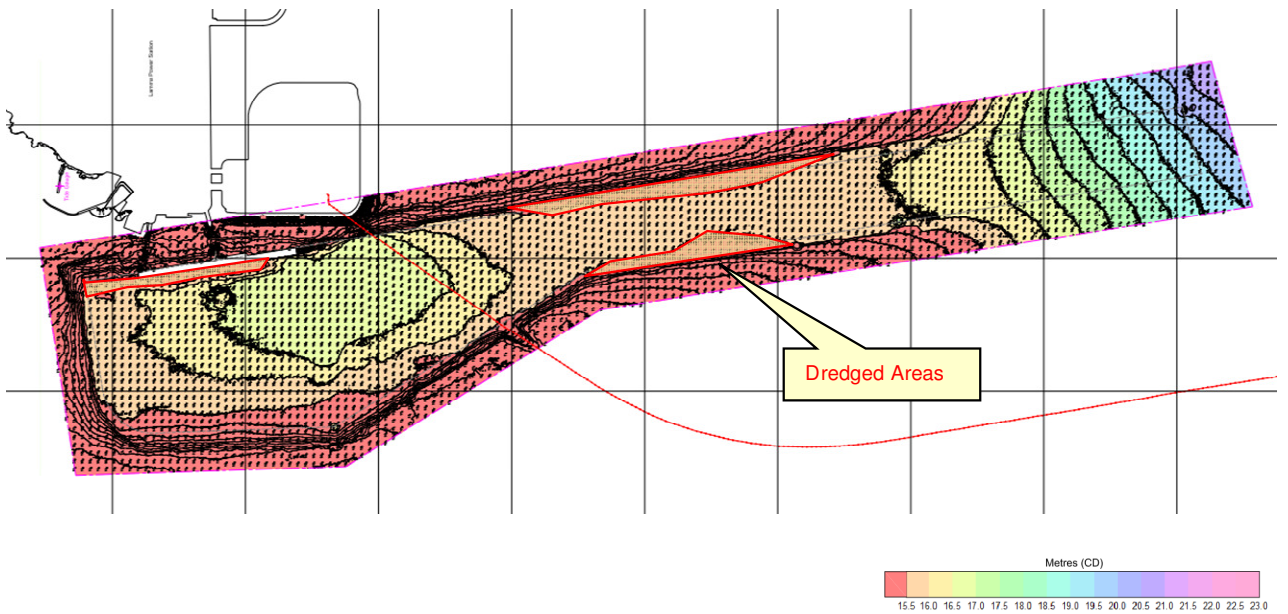
Improvement Dredging for Lamma Power Station Navigation Channel Environmental Impact Assessment

2013 Bathymetry Survey



(Note: the boundary of the navigation channel is delineated by the black line. Areas shown in red have exceeded the minimum channel depth requirement as specified in the 2008 Berthing Guidelines)

2015 (Critical High Spot Dredging Only)



(Note: updated bathymetry survey taken in 2014)