



VSR1 Tung Chung New Town Extension Tung Chung East Development (TCNTE TCE Development) - Existing View (Approx. 1470m)

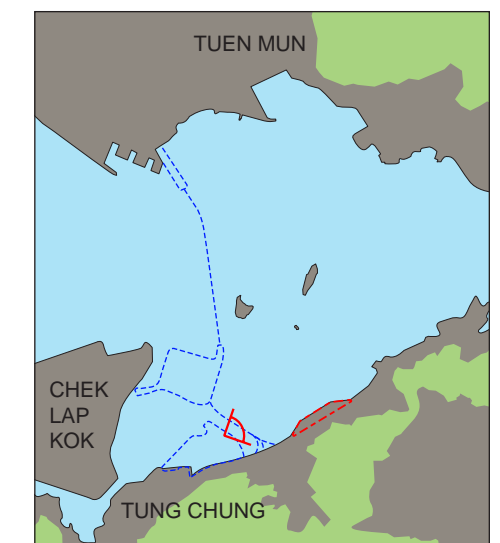
NOTES:

Sample photomontages have been generated to provide a preliminary idea on the scale, massing and extent of the proposed development, as well as the effect of the proposed mitigation measures. These images will be subject to change and are for illustrative purposes only. The architectural design, finishes or any other related detailed design components are subject to refinement and changes at the detailed design stage.

Mitigation Measures (Operational Phase)	
OM1	Re-instatement of Excavated Area
OM2	Aesthetic Design of Built Development
OM3	Appearance of the Proposed Structures
OM4	Compensatory Planting
OM5	Buffer Planting
OM6	Visual Design on Noise Mitigation Measures



VSR1 Tung Chung New Town Extension Tung Chung East Development (TCNTE TCE Development) - Photomontage (Without mitigation at Day 1)



Key Plan





VSR1 Tung Chung New Town Extension Tung Chung East Development (TCNTE TCE Development) - Photomontage (With mitigation at Day 1)

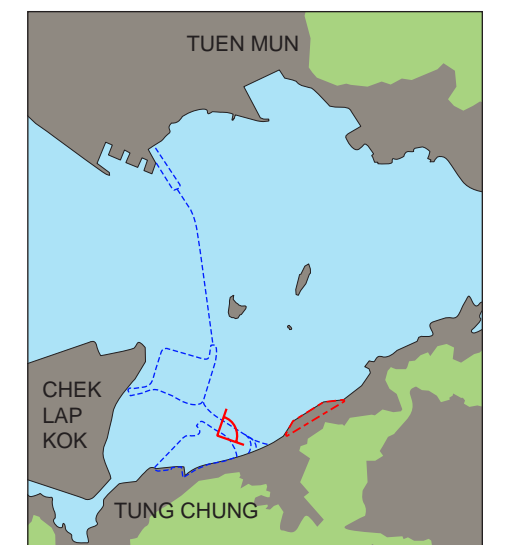


VSR1 Tung Chung New Town Extension Tung Chung East Development (TCNTE TCE Development) - Photomontage (With mitigation at Year 10)

NOTES:

Sample photomontages have been generated to provide a preliminary idea on the scale, massing and extent of the proposed development, as well as the effect of the proposed mitigation measures. These images will be subject to change and are for illustrative purposes only. The architectural design, finishes or any other related detailed design components are subject to refinement and changes at the detailed design stage.

Mitigation Measures (Operational Phase)	
OM1	Re-instatement of Excavated Area
OM2	Aesthetic Design of Built Development
OM3	Appearance of the Proposed Structures
OM4	Compensatory Planting
OM5	Buffer Planting
OM6	Visual Design on Noise Mitigation Measures



Key Plan





VSR3 Pak Mong Village - Existing View (Approx. 1130m)

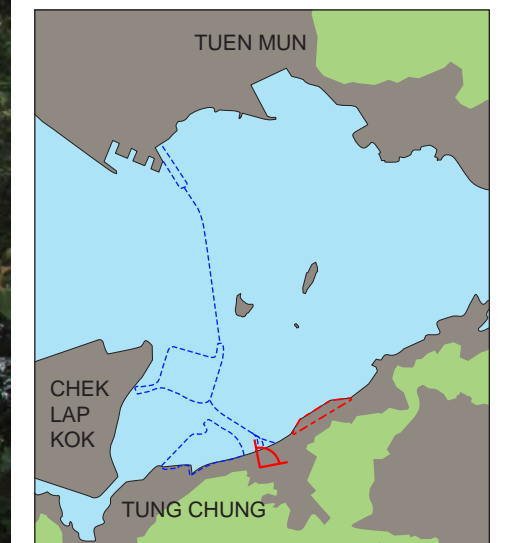
**NOTES:**

Sample photomontages have been generated to provide a preliminary idea on the scale, massing and extent of the proposed development, as well as the effect of the proposed mitigation measures. These images will be subject to change and are for illustrative purposes only. The architectural design, finishes or any other related detailed design components are subject to refinement and changes at the detailed design stage.

Mitigation Measures (Operational Phase)	
OM1	Re-instatement of Excavated Area
OM2	Aesthetic Design of Built Development
OM3	Appearance of the Proposed Structures
OM4	Compensatory Planting
OM5	Buffer Planting
OM6	Visual Design on Noise Mitigation Measures

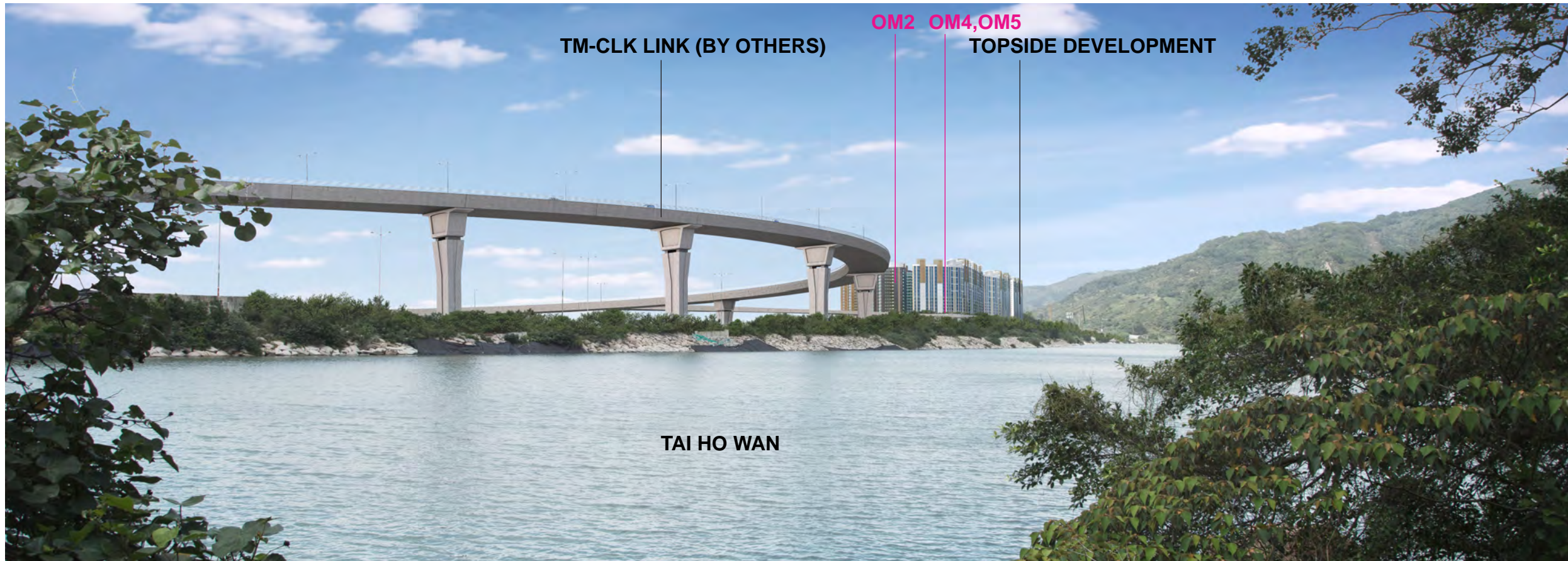


VSR3 Pak Mong Village - Photomontage (Without mitigation at Day 1)

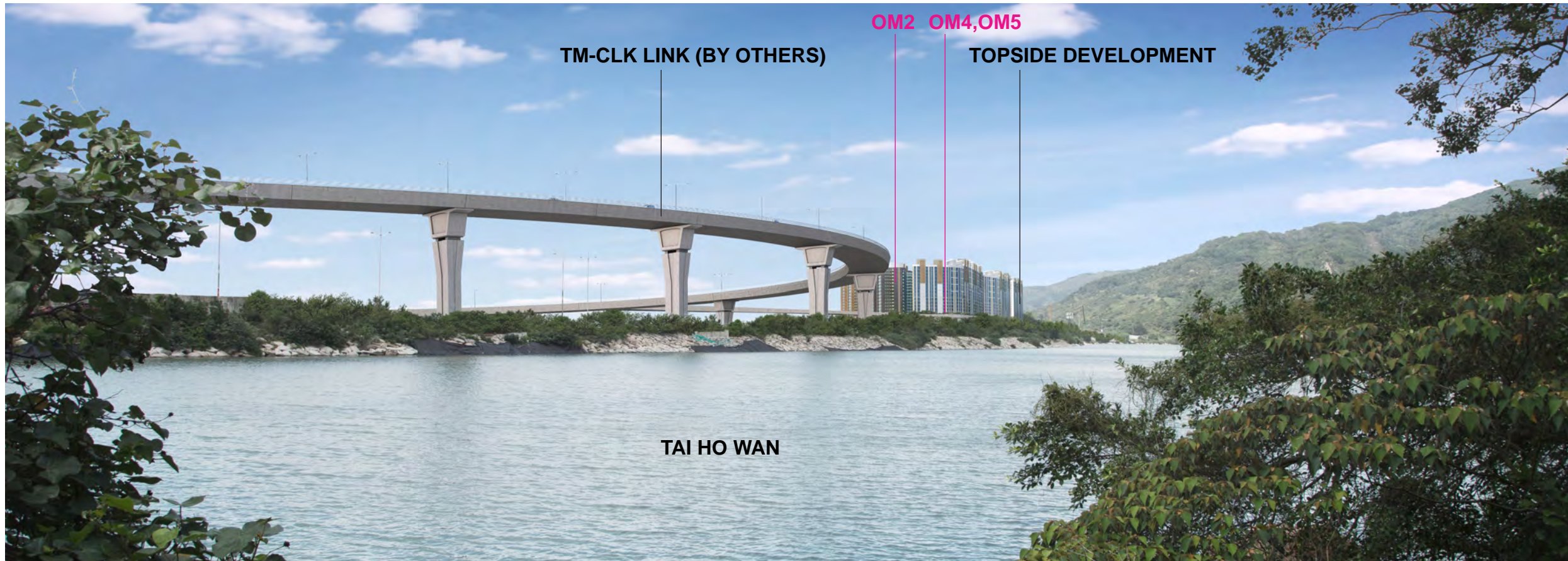


Key Plan





VSR3 Pak Mong Village - Photomontage (With mitigation at Day 1)

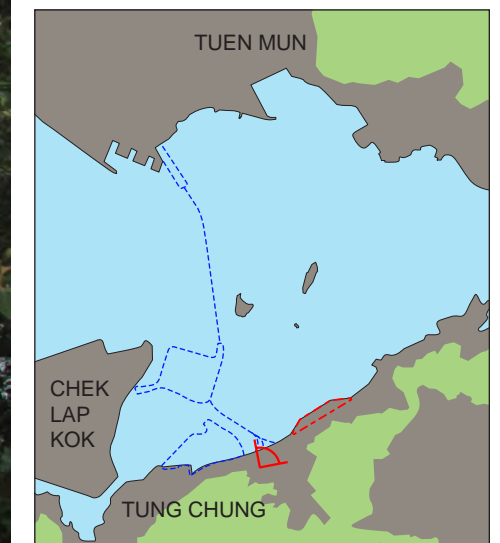


VSR3 Pak Mong Village - Photomontage (With mitigation at Year 10)

NOTES:

Sample photomontages have been generated to provide a preliminary idea on the scale, massing and extent of the proposed development, as well as the effect of the proposed mitigation measures. These images will be subject to change and are for illustrative purposes only. The architectural design, finishes or any other related detailed design components are subject to refinement and changes at the detailed design stage.

Mitigation Measures (Operational Phase)	
OM1	Re-instatement of Excavated Area
OM2	Aesthetic Design of Built Development
OM3	Appearance of the Proposed Structures
OM4	Compensatory Planting
OM5	Buffer Planting
OM6	Visual Design on Noise Mitigation Measures



Key Plan





VSR4 Hong Kong Olympic Trail - Existing View (Approx. 1930m)

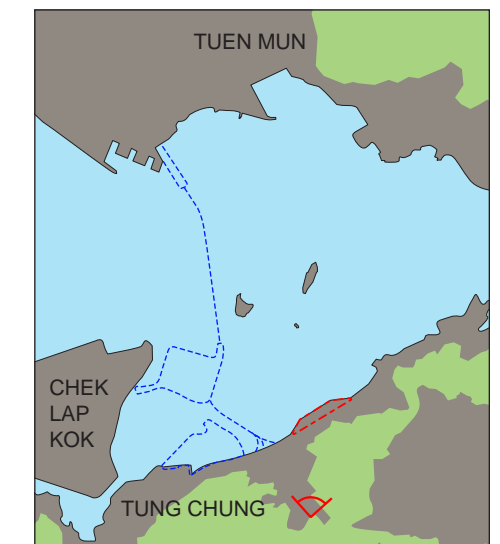


VSR4 Hong Kong Olympic Trail - Photomontage (Without mitigation at Day 1)

NOTES:

Sample photomontages have been generated to provide a preliminary idea on the scale, massing and extent of the proposed development, as well as the effect of the proposed mitigation measures. These images will be subject to change and are for illustrative purposes only. The architectural design, finishes or any other related detailed design components are subject to refinement and changes at the detailed design stage.

Mitigation Measures (Operational Phase)	
OM1	Re-instatement of Excavated Area
OM2	Aesthetic Design of Built Development
OM3	Appearance of the Proposed Structures
OM4	Compensatory Planting
OM5	Buffer Planting
OM6	Visual Design on Noise Mitigation Measures



Key Plan





VSR4 Hong Kong Olympic Trail - Photomontage (With mitigation at Day 1)

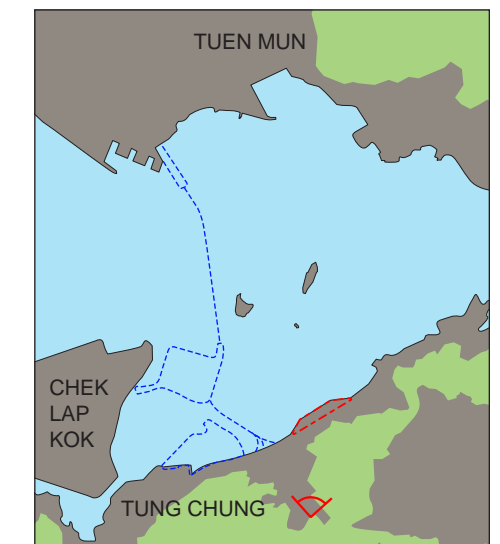


VSR4 Hong Kong Olympic Trail - Photomontage (With mitigation at Year 10)

NOTES:

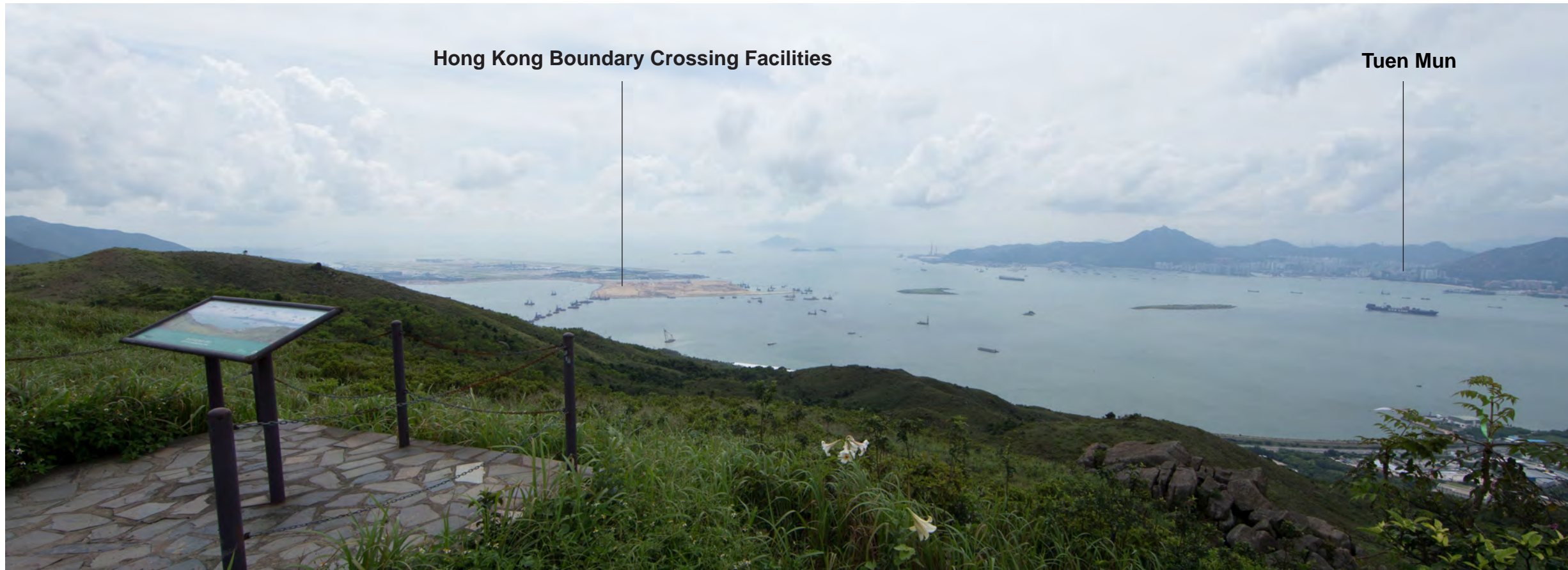
Sample photomontages have been generated to provide a preliminary idea on the scale, massing and extent of the proposed development, as well as the effect of the proposed mitigation measures. These images will be subject to change and are for illustrative purposes only. The architectural design, finishes or any other related detailed design components are subject to refinement and changes at the detailed design stage.

Mitigation Measures (Operational Phase)	
OM1	Re-instatement of Excavated Area
OM2	Aesthetic Design of Built Development
OM3	Appearance of the Proposed Structures
OM4	Compensatory Planting
OM5	Buffer Planting
OM6	Visual Design on Noise Mitigation Measures

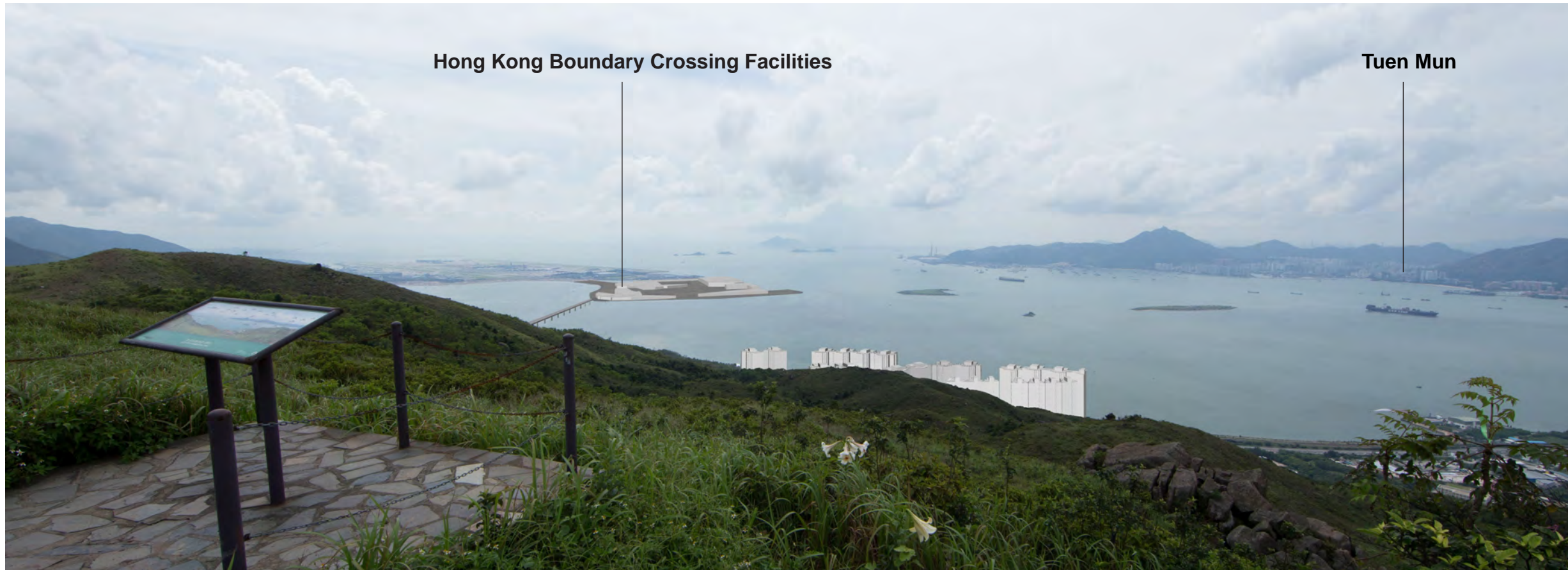


Key Plan





VSR5 Lo Fu Tau Country Trail - Existing View (Approx. 1525m)

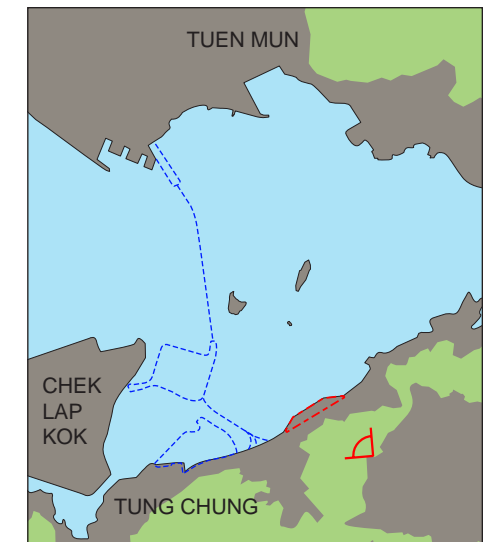


VSR5 Lo Fu Tau Country Trail - Photomontage (Without mitigation at Day 1)

**NOTES:**

Sample photomontages have been generated to provide a preliminary idea on the scale, massing and extent of the proposed development, as well as the effect of the proposed mitigation measures. These images will be subject to change and are for illustrative purposes only. The architectural design, finishes or any other related detailed design components are subject to refinement and changes at the detailed design stage.

Mitigation Measures (Operational Phase)	
OM1	Re-instatement of Excavated Area
OM2	Aesthetic Design of Built Development
OM3	Appearance of the Proposed Structures
OM4	Compensatory Planting
OM5	Buffer Planting
OM6	Visual Design on Noise Mitigation Measures



Key Plan





VSR5 Lo Fu Tau Country Trail - Photomontage (With mitigation at Day 1)

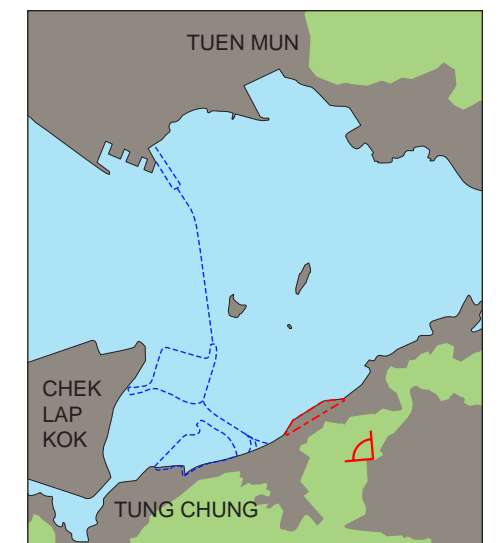


VSR5 Lo Fu Tau Country Trail - Photomontage (With mitigation at Year 10)

NOTES:

Sample photomontages have been generated to provide a preliminary idea on the scale, massing and extent of the proposed development, as well as the effect of the proposed mitigation measures. These images will be subject to change and are for illustrative purposes only. The architectural design, finishes or any other related detailed design components are subject to refinement and changes at the detailed design stage.

Mitigation Measures (Operational Phase)	
OM1	Re-instatement of Excavated Area
OM2	Aesthetic Design of Built Development
OM3	Appearance of the Proposed Structures
OM4	Compensatory Planting
OM5	Buffer Planting
OM6	Visual Design on Noise Mitigation Measures



Key Plan



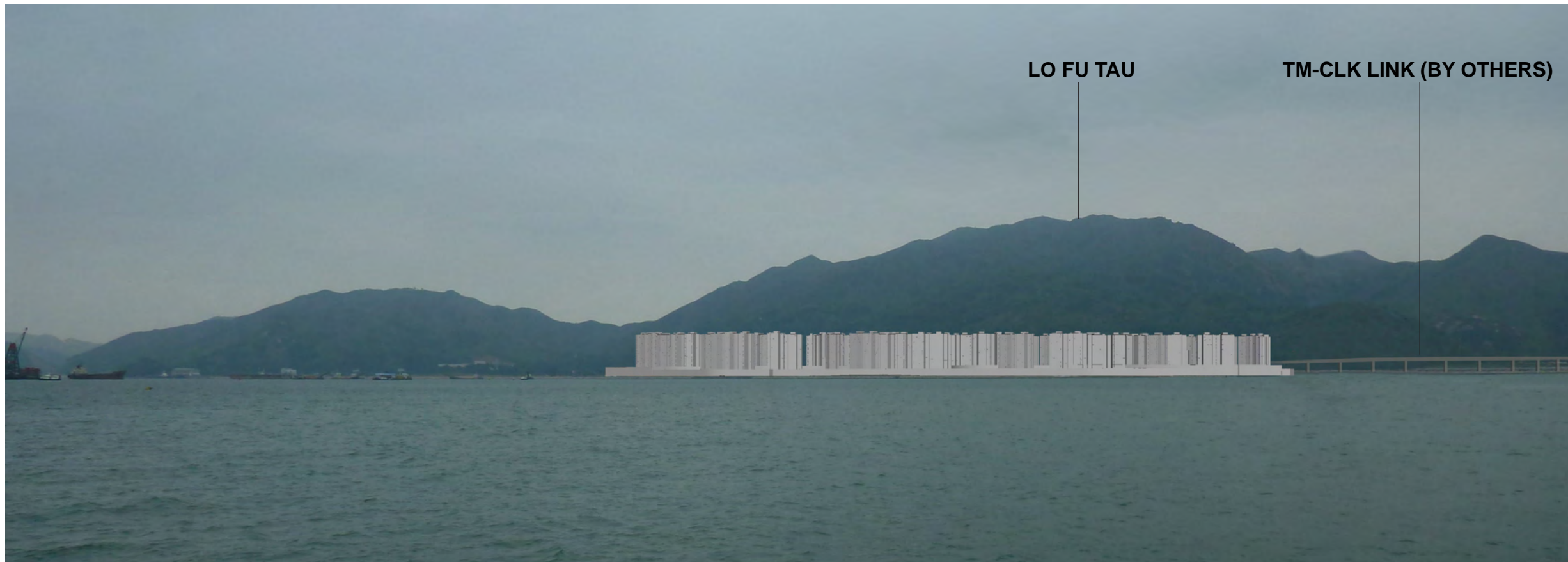


VSR6 Hong Kong Boundary Crossing Facilities - Existing View (Approx. 2390m)

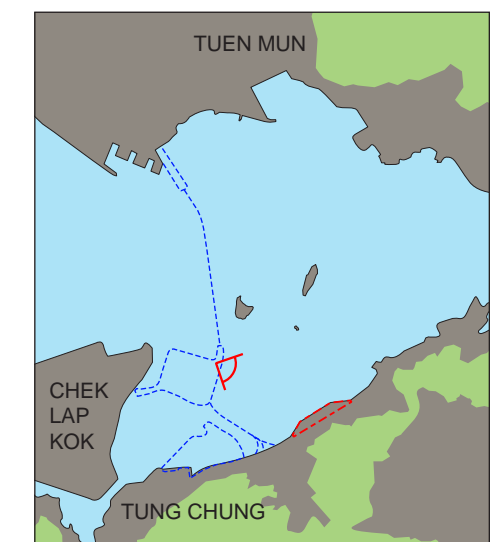
**NOTES:**

Sample photomontages have been generated to provide a preliminary idea on the scale, massing and extent of the proposed development, as well as the effect of the proposed mitigation measures. These images will be subject to change and are for illustrative purposes only. The architectural design, finishes or any other related detailed design components are subject to refinement and changes at the detailed design stage.

Mitigation Measures (Operational Phase)	
OM1	Re-instatement of Excavated Area
OM2	Aesthetic Design of Built Development
OM3	Appearance of the Proposed Structures
OM4	Compensatory Planting
OM5	Buffer Planting
OM6	Visual Design on Noise Mitigation Measures

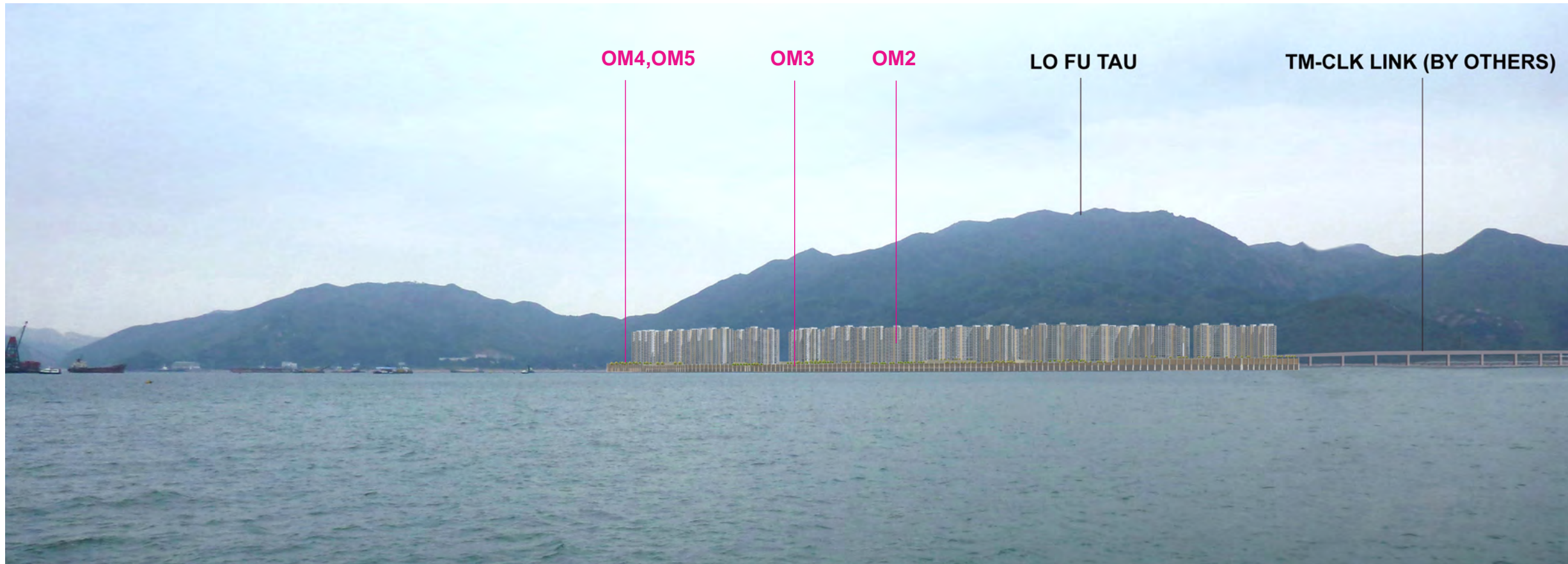


VSR6 Hong Kong Boundary Crossing Facilities - Photomontage (Without mitigation at Day 1)

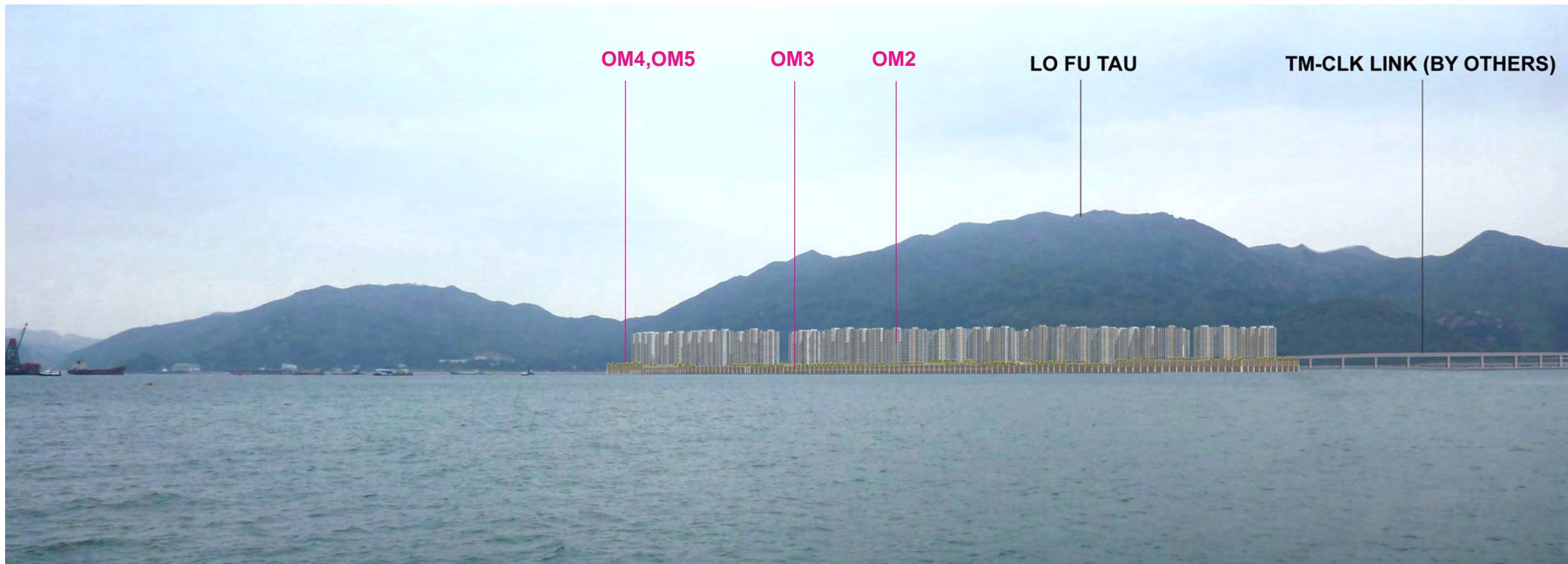


Key Plan





VSR6 Hong Kong Boundary Crossing Facilities - Photomontage (With mitigation at Day 1)

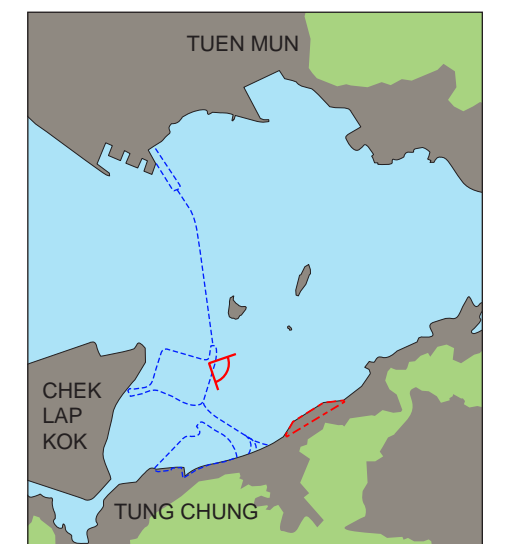


VSR6 Hong Kong Boundary Crossing Facilities - Photomontage (With mitigation at Year 10)

NOTES:

Sample photomontages have been generated to provide a preliminary idea on the scale, massing and extent of the proposed development, as well as the effect of the proposed mitigation measures. These images will be subject to change and are for illustrative purposes only. The architectural design, finishes or any other related detailed design components are subject to refinement and changes at the detailed design stage.

Mitigation Measures (Operational Phase)	
OM1	Re-instatement of Excavated Area
OM2	Aesthetic Design of Built Development
OM3	Appearance of the Proposed Structures
OM4	Compensatory Planting
OM5	Buffer Planting
OM6	Visual Design on Noise Mitigation Measures



Key Plan





VSR7 Tai O-Tuen Mun Ferry - Existing View (Approx. 1825m)

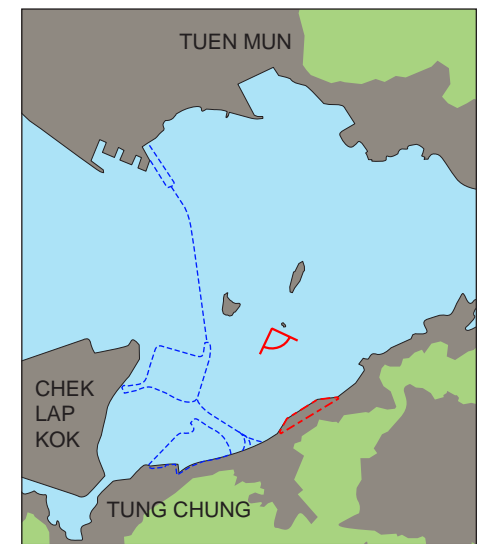


VSR7 Tai O-Tuen Mun Ferry - Photomontage (Without mitigation at Day 1)

NOTES:

Sample photomontages have been generated to provide a preliminary idea on the scale, massing and extent of the proposed development, as well as the effect of the proposed mitigation measures. These images will be subject to change and are for illustrative purposes only. The architectural design, finishes or any other related detailed design components are subject to refinement and changes at the detailed design stage.

Mitigation Measures (Operational Phase)	
OM1	Re-instatement of Excavated Area
OM2	Aesthetic Design of Built Development
OM3	Appearance of the Proposed Structures
OM4	Compensatory Planting
OM5	Buffer Planting
OM6	Visual Design on Noise Mitigation Measures



Key Plan





VSR7 Tai O-Tuen Mun Ferry - Photomontage (With mitigation at Day 1)

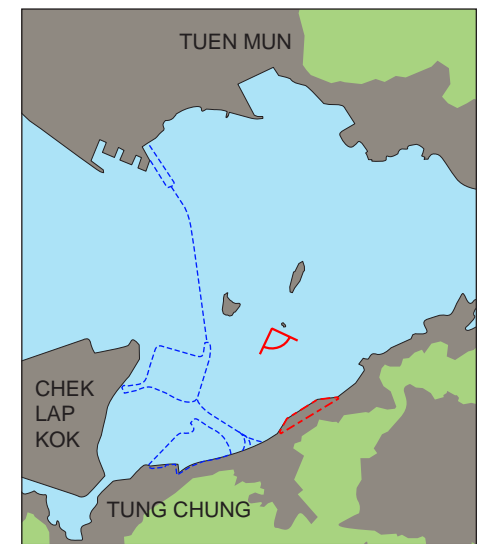


VSR7 Tai O-Tuen Mun Ferry - Photomontage (With mitigation at Year 10)

NOTES:

Sample photomontages have been generated to provide a preliminary idea on the scale, massing and extent of the proposed development, as well as the effect of the proposed mitigation measures. These images will be subject to change and are for illustrative purposes only. The architectural design, finishes or any other related detailed design components are subject to refinement and changes at the detailed design stage.

Mitigation Measures (Operational Phase)	
OM1	Re-instatement of Excavated Area
OM2	Aesthetic Design of Built Development
OM3	Appearance of the Proposed Structures
OM4	Compensatory Planting
OM5	Buffer Planting
OM6	Visual Design on Noise Mitigation Measures



Key Plan



**NORTH LANTAU HIGHWAY**



VSR8 North Lantau Highway - Existing View (Approx. 275m)

**NORTH LANTAU HIGHWAY**

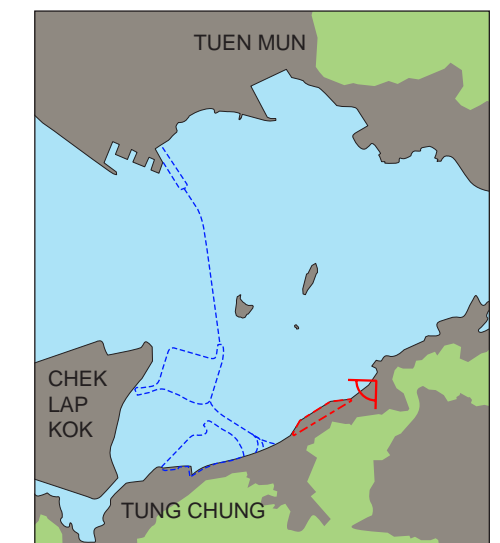


VSR8 North Lantau Highway - Photomontage (Without mitigation at Day 1)

**NOTES:**

Sample photomontages have been generated to provide a preliminary idea on the scale, massing and extent of the proposed development, as well as the effect of the proposed mitigation measures. These images will be subject to change and are for illustrative purposes only. The architectural design, finishes or any other related detailed design components are subject to refinement and changes at the detailed design stage.

Mitigation Measures (Operational Phase)	
OM1	Re-instatement of Excavated Area
OM2	Aesthetic Design of Built Development
OM3	Appearance of the Proposed Structures
OM4	Compensatory Planting
OM5	Buffer Planting
OM6	Visual Design on Noise Mitigation Measures



Key Plan





VSR8 North Lantau Highway - Photomontage (With mitigation at Day 1)

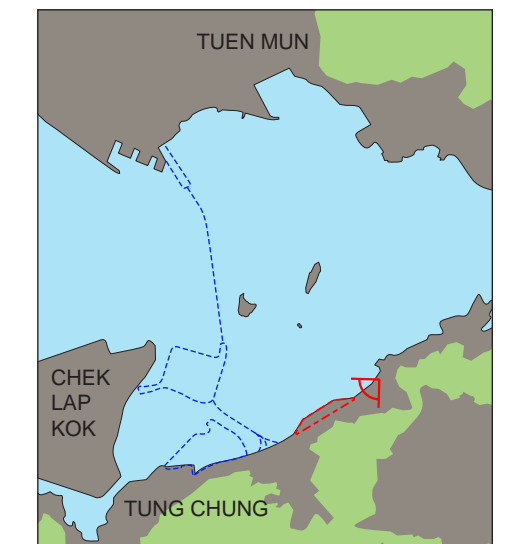


VSR8 North Lantau Highway - Photomontage (With mitigation at Year 10)

NOTES:

Sample photomontages have been generated to provide a preliminary idea on the scale, massing and extent of the proposed development, as well as the effect of the proposed mitigation measures. These images will be subject to change and are for illustrative purposes only. The architectural design, finishes or any other related detailed design components are subject to refinement and changes at the detailed design stage.

Mitigation Measures (Operational Phase)	
OM1	Re-instatement of Excavated Area
OM2	Aesthetic Design of Built Development
OM3	Appearance of the Proposed Structures
OM4	Compensatory Planting
OM5	Buffer Planting
OM6	Visual Design on Noise Mitigation Measures



Key Plan





VSR12b Tuen Mun South Coast - Existing View (Approx. 6955m)

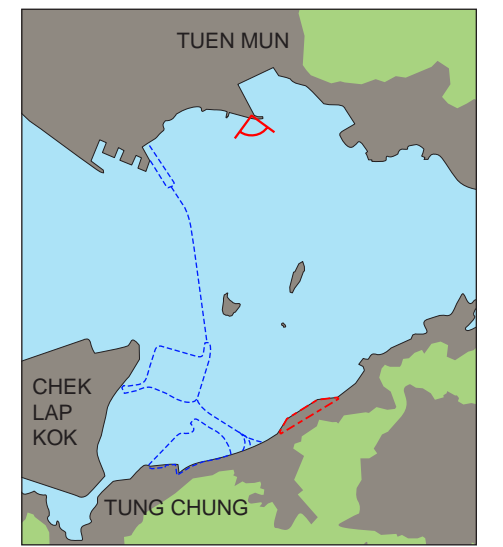


VSR12b Tuen Mun South Coast - Photomontage (Without mitigation at Day 1)

NOTES:

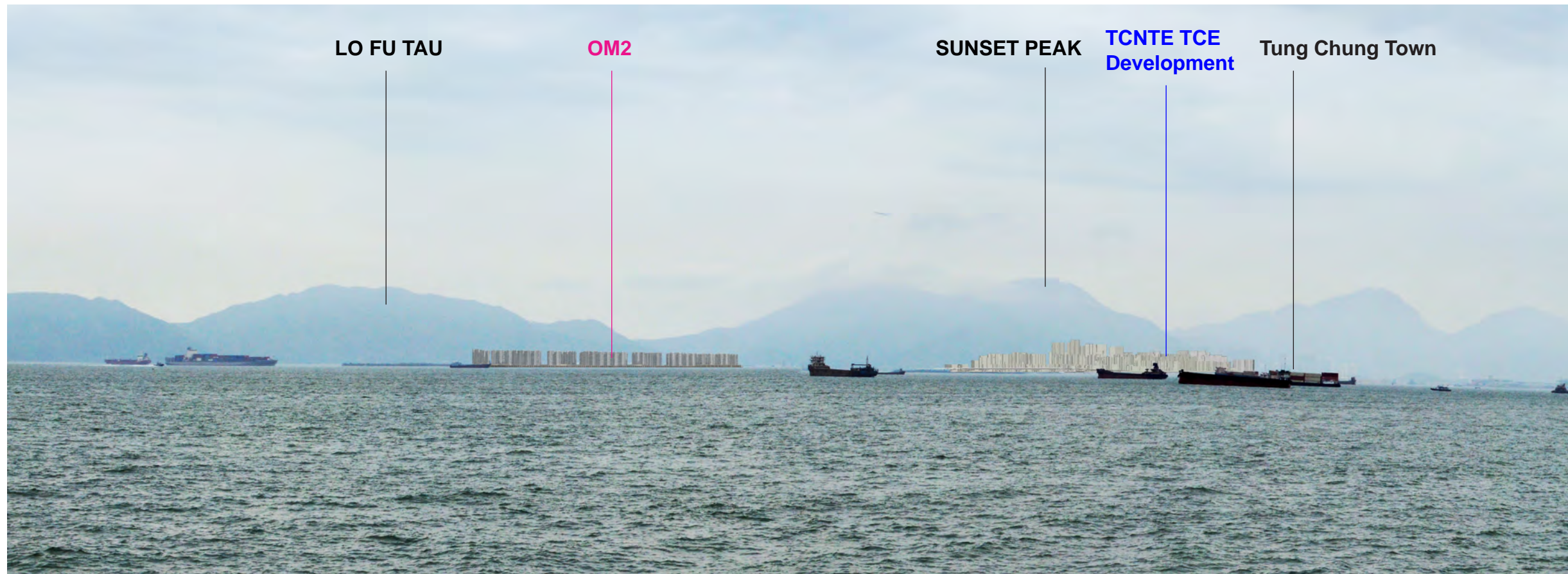
Sample photomontages have been generated to provide a preliminary idea on the scale, massing and extent of the proposed development, as well as the effect of the proposed mitigation measures. These images will be subject to change and are for illustrative purposes only. The architectural design, finishes or any other related detailed design components are subject to refinement and changes at the detailed design stage.

Mitigation Measures (Operational Phase)	
OM1	Re-instatement of Excavated Area
OM2	Aesthetic Design of Built Development
OM3	Appearance of the Proposed Structures
OM4	Compensatory Planting
OM5	Buffer Planting
OM6	Visual Design on Noise Mitigation Measures

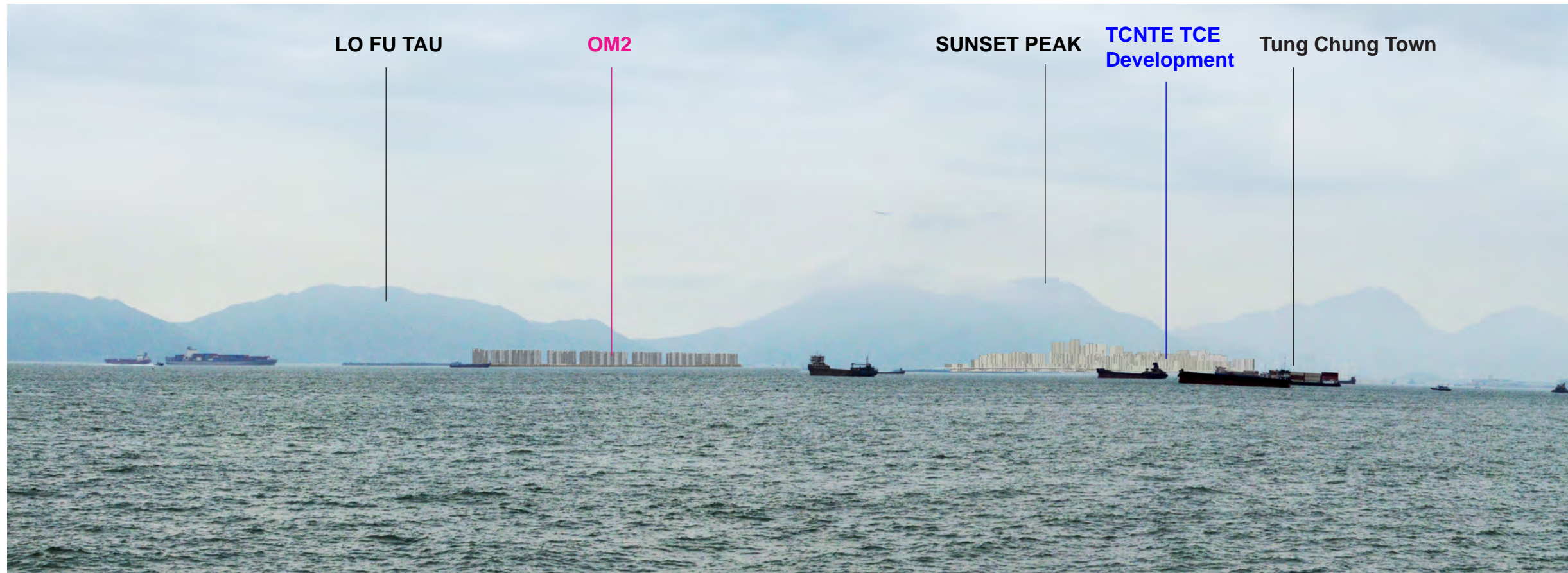


Key Plan





VSR12b Tuen Mun South Coast - Photomontage (With mitigation at Day 1)

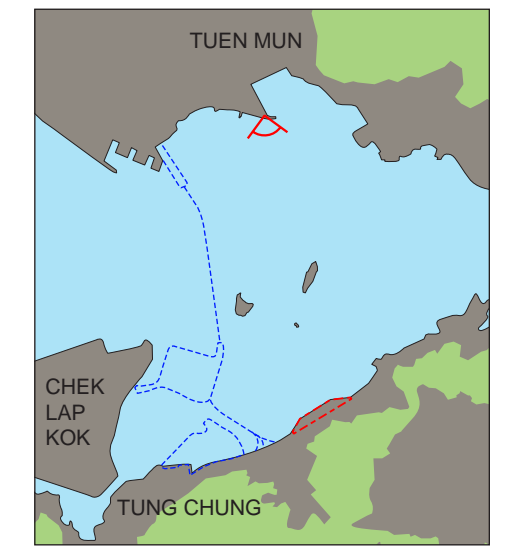


VSR12b Tuen Mun South Coast - Photomontage (With mitigation at Year 10)

NOTES:

Sample photomontages have been generated to provide a preliminary idea on the scale, massing and extent of the proposed development, as well as the effect of the proposed mitigation measures. These images will be subject to change and are for illustrative purposes only. The architectural design, finishes or any other related detailed design components are subject to refinement and changes at the detailed design stage.

Mitigation Measures (Operational Phase)	
OM1	Re-instatement of Excavated Area
OM2	Aesthetic Design of Built Development
OM3	Appearance of the Proposed Structures
OM4	Compensatory Planting
OM5	Buffer Planting
OM6	Visual Design on Noise Mitigation Measures



Key Plan





VSR13 Cheung Tung Road - Existing View (Approx. 50m)

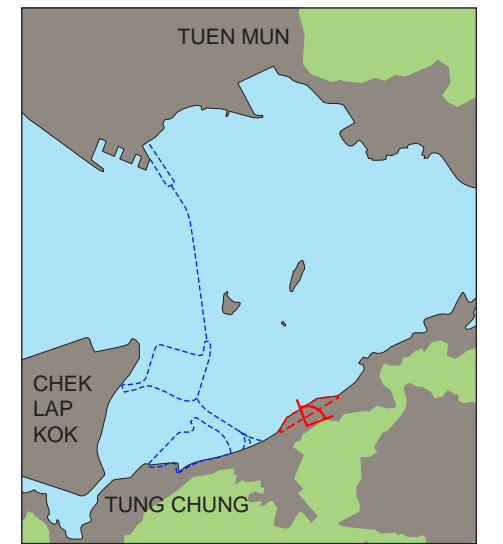


VSR13 Cheung Tung Road - Photomontage (Without mitigation at Day 1)

NOTES:

Sample photomontages have been generated to provide a preliminary idea on the scale, massing and extent of the proposed development, as well as the effect of the proposed mitigation measures. These images will be subject to change and are for illustrative purposes only. The architectural design, finishes or any other related detailed design components are subject to refinement and changes at the detailed design stage.

Mitigation Measures (Operational Phase)	
OM1	Re-instatement of Excavated Area
OM2	Aesthetic Design of Built Development
OM3	Appearance of the Proposed Structures
OM4	Compensatory Planting
OM5	Buffer Planting
OM6	Visual Design on Noise Mitigation Measures



Key Plan





VSR13 Cheung Tung Road - Photomontage (With mitigation at Day 1)

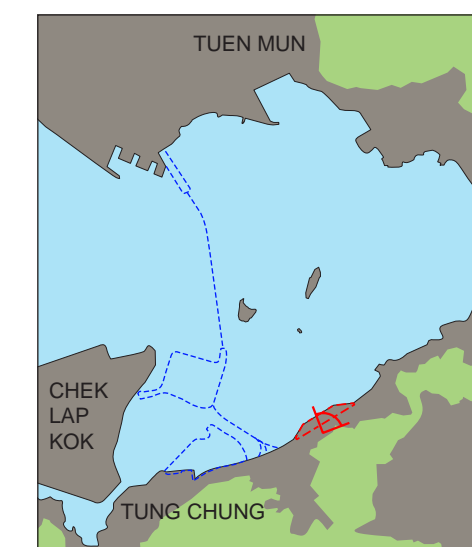


VSR13 Cheung Tung Road - Photomontage (With mitigation at Year 10)

NOTES:

Sample photomontages have been generated to provide a preliminary idea on the scale, massing and extent of the proposed development, as well as the effect of the proposed mitigation measures. These images will be subject to change and are for illustrative purposes only. The architectural design, finishes or any other related detailed design components are subject to refinement and changes at the detailed design stage.

Mitigation Measures (Operational Phase)	
OM1	Re-instatement of Excavated Area
OM2	Aesthetic Design of Built Development
OM3	Appearance of the Proposed Structures
OM4	Compensatory Planting
OM5	Buffer Planting
OM6	Visual Design on Noise Mitigation Measures



Key Plan